

MICRO SWITCH

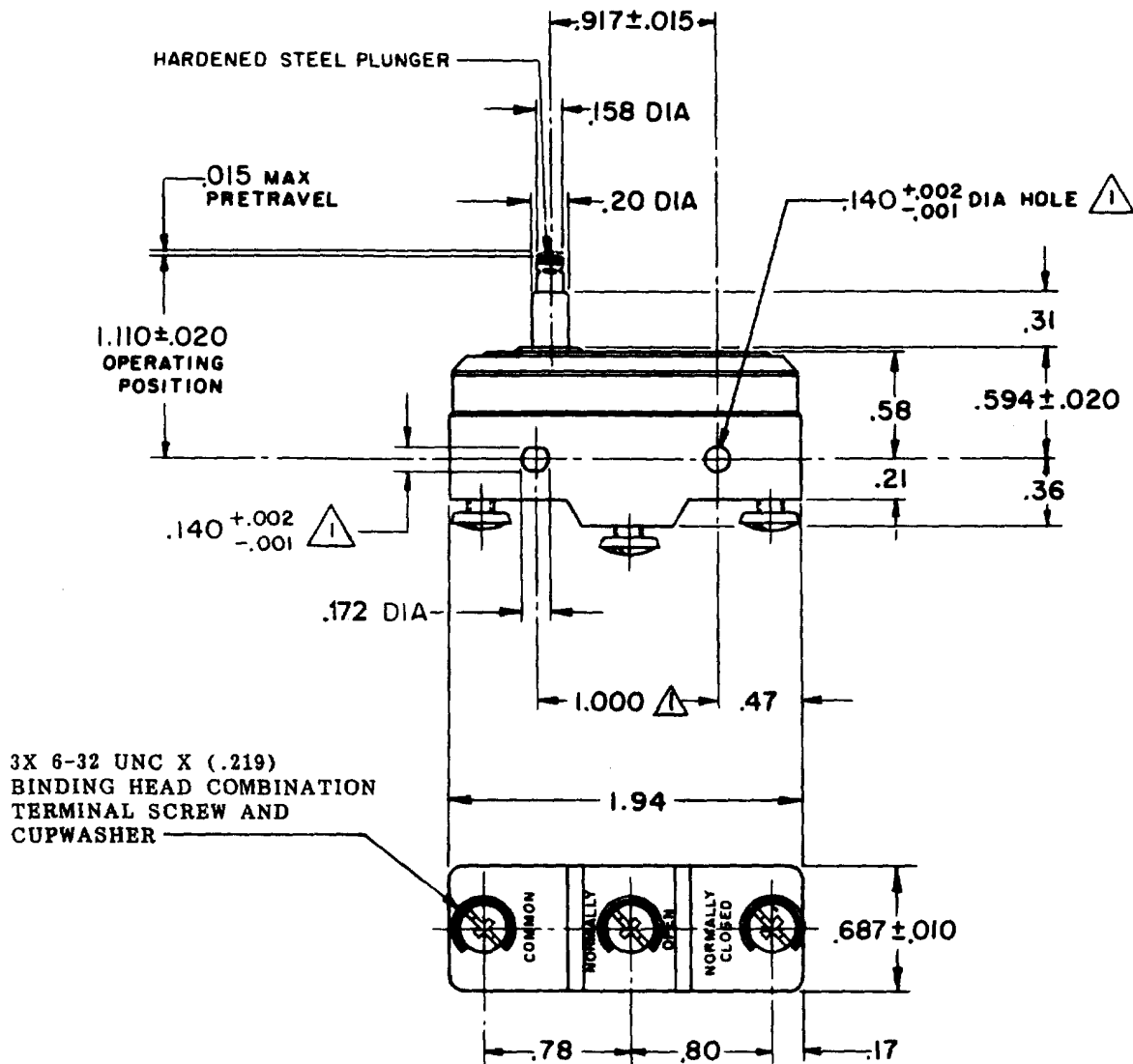
FREEPORT ILLINOIS, U.S.A
A DIVISION OF HONEYWELL
FED. MFG. CODE 91929

SWITCH - BASIC

CATALOG LISTING

BM-1RS-A2

BM-1RS-A2
M
 DRAWING NUMBER
26
 ISSUE
3
 RELEASE NO. PR-1004
 REPLACES
 23NOV07
 ASD
 CHECK
 18DEC69
 RFS
 CHECK
 18DEC69
 LSD
 CHECK
 5 DEC. 69
 GCH
 DRAWN
 RASTER
 FO-50378-1A



THIS DRAWING COVERS A PROPRIETARY ITEM AND IS THE PROPERTY OF MICRO SWITCH, A DIVISION OF HONEYWELL. THIS DRAWING IS NOT TO BE COPIED OR USED WITHOUT THE APPROVAL OF MICRO SWITCH.

CHARACTERISTICS	ELECTRICAL DATA	SCALE FULL
OPERATING FORCE----- 7-10 OZ	CONTACT ARRANGEMENT S P D T	DO NOT SCALE PRINT
RELEASE FORCE----- 4 OZ MIN	-L161- 22 A-125, 250, OR 480 VAC 1/2 HP-125 VAC; 1 HP-250 VAC L288 L315 L318 22A 250V ~ T85 5E4	UNLESS OTHERWISE NOTED DIMENSIONS ARE IN INCHES
DIFFERENTIAL TRAVEL----- .0005-.0010		TOLERANCES ARE: ONE PLACE (.0) ±.030 TWO PLACE (.00) ±.015 THREE PLACE (.000) ±.005 ANGLES ° ±
OVERTRAVEL----- .060 MIN		WEIGHT .063 LB