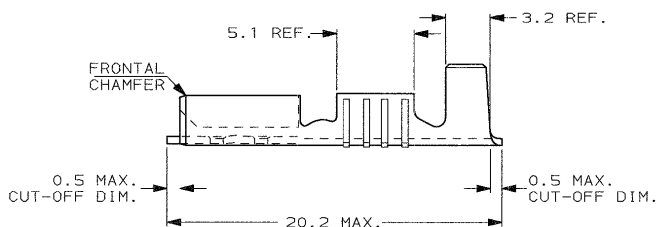
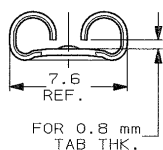
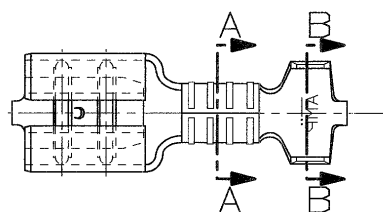


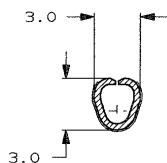
SCALA NON IMPERATIVA
(DO NOT SCALE)
DIMENSIONI IN
(DIMENSIONS IN) mm

METRIC

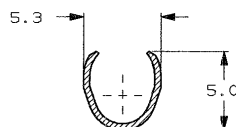


- 1) PER LE VERSIONI IN NASTRO
VEDERE DISEGNO 280001
(FOR STRIP FORM VERSION SEE DRAWING 280001)
- 2) CONFEZIONAMENTO IN ACCORDO
ALLA SPECIFICA AMP 107-20201
(PACKAGED ACCORDING TO AMP SPEC. 107-20201).

SEZIONE A-A
SECTION A-A



SEZIONE B-B
SECTION B-B



NUDO (UNPLATED)	OTTONE (BRASS)	0-181903-4	G
STAGNATO (TIN PLATED)	OTTONE (BRASS)	0-181903-1	G
FINITURA / COLORE (FINISH / COLOUR)	MATERIALE (MATERIAL)	NUMERO (PART NUMBER)	REV

CUSTOMER DWG.
FOR REFERENCE ONLY

DISEGNO PER CLIENTE
SOLO PER RIFERIMENTO

THIS DRAWING IS UNPUBLISHED		RELEASE FOR PUBLICATION		19
© COPYRIGHT 19 BY AMP INCORPORATED, HARTSBURG, PA. ALL INTERNATIONAL RIGHT RESERVED. AMP PRODUCTS MAY BE COVERED BY U.S. AND FOREIGN PATENT AND/OR PATENT PENDING				
TOLERANCE, SE NON DIVERSAMENTE SPECIFICATO	DIAM. ISOLANTE (INS. DIA. RANGE)	RANGO FILO (WIRE RANGE)	mm2 (SCALE)	SCALE
(TOLERANCES, UNLESS OTHERWISE SPECIFIED)	3.0-4.3	1.0-2.5	4:1	
ANGOLI (ANGLES)	± 0.3			
	± 2°			
DIS. H. YAALI (DR.)		AMP AMP ITALIA S.p.A. Corso P.L.Li. Cervi/5 40138 BOLOGNA (BO) ITALY		
CONF. C. TARTARI (CHK)		DESCRIPTIONE (DESCRIPTION)		
15 SEP 2000		FASTON® Connector, 0.25 sq. in. CONTACT, (LOOSE PIECE VERSION)		
LOC. SIZE NUMERO (LWS NO)	REV.	FOGLIO (SHEET)		
I A3 C-181903	G 1	1 OF 1		

DISTRIBUZIONI
PRINTING