

4

3

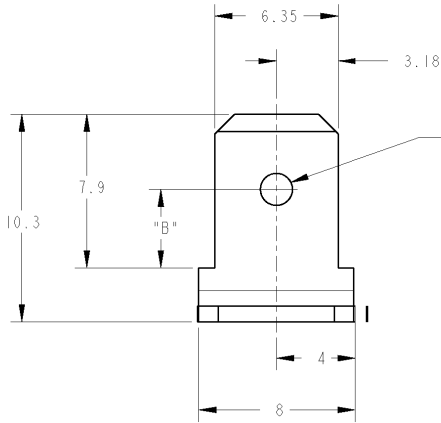
2

1

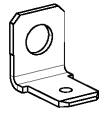
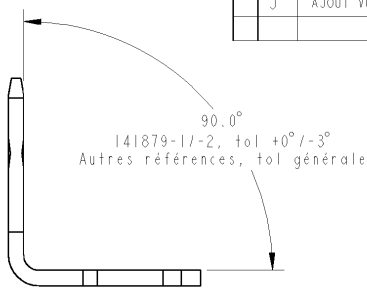
THIS DRAWING IS UNPUBLISHED.
 DIFFUSION RESTREINTE AMP
 © COPYRIGHT 20 BY TYCO ELECTRONICS CORPORATION. ALL RIGHTS RESERVED.
 TOUTS DROITS RESERVES

Loc F DIST 7

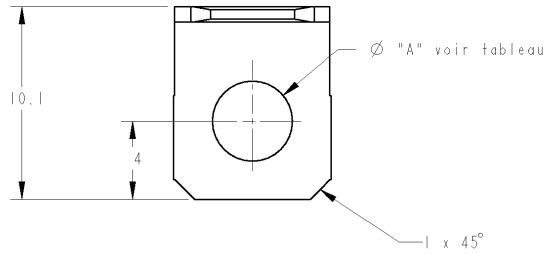
REVISIONS					
P	LTR REV	DESCRIPTION MODIFICATIONS	DATE	DWN BESS.	APVD APP.
G		Redessine en CAO et revise	30MARS98	O.L	-
H		CLARIFICATION	09OCT2000	JJD	-
J		AJOUT VUE DE COTE ET DIM 90°	12MAR2004	GR	gr



Bossage Ø 1.7
 ou
 Trou Ø 2
 ITEM "C" (voir tableau)



ECHELLE 2:1



Ø "A" voir tableau

1 x 45°

142612-2	etame	3	3.4	trou
142612-1	brut	3	3.4	trou
141879-2	etame	4.1	3.4	trou
141879-1	brut	4.1	3.4	trou
140793-2	etame	4.1	3.4	trou
140793-1	brut	4.1	3.4	trou
140732-2	etame	3.1	4	bossage
140732-1	brut	3.1	4	bossage
140600-0	etame	3.7	4	bossage
140599-0	brut	3.7	4	bossage
140594-0	etame	4.1	4	bossage
140593-0	brut	4.1	4	bossage
Numero	Finition	"A"	"B"	"C"

<small>THIS DRAWING IS A CONTROLLED DOCUMENT FOR THE ELECTRONICS CORPORATION IT IS SUBJECT TO CHANGE AND THE CONTROLLING ENGINEERING ORGANIZATION SHOULD BE CONTACTED FOR THE LATEST REVISION. IL EST SOUS LE CONTROLE D'UN SERVICE D'INGENIERIE ELECTRONIQUE IL EST SUSCEPTIBLE D'ETRE REVISE. CONTACTER LE SERVICE TECHNOLOGIE D'AMP DE FRANCE POUR OBTENIR LA DERNIERE VERSION.</small>		DWN/DESSINE 30MARS98 O. LEMPEREUR CHR/VERIFIE G. ROBERT APVD/APPROUVE Y. PETRONIN	AMP AMP DE FRANCE 95301 PONTOISE
DIMENSIONS: mm	TOLERANCES UNLESS OTHERWISE SPECIFIED: TOLERANCES NON SPECIFIEES (SUIVANT LES DECIMALES): 0. PLC/DEC: ± 1. PLC/DEC: ±0.2 2. PLC/DEC: ± 3. PLC/DEC: ± 4. PLC/DEC: ± ANGLES ±30°	PRODUCT SPEC SPEC. PRODUIT APPLICATION SPEC SPEC. APPLICATION	NAME FASTON TABS BENT 90 .250 series LANGUETTE POUR CLIPS
MATERIAL / MATIERE LAITON Epaisseur : 0.8mm	FINISH / FINITION VOIR TABLE	WEIGHT MASSE APPROX.	SIZE FORMAT A3 CAGE CODE 00779 DRAWING NO H- PLAN 140593
CUSTOMER DRAWING / PLAN CLIENT		UNDOUMENT POUR REFERENCE	RESTRICTED TO RESERVE A
SCALE ECHELLE 5:1		SHEET FEUILLE 1	OF BE 1

AMP 1470-19 REV 31MAR2000

Proj/ENGINEER DRAWING