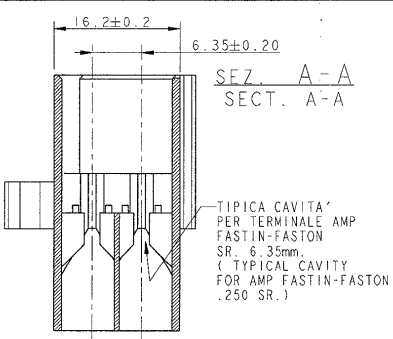
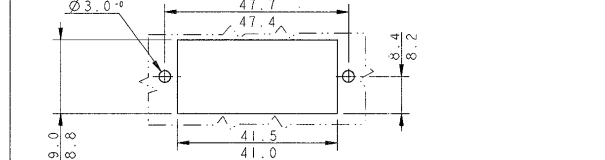


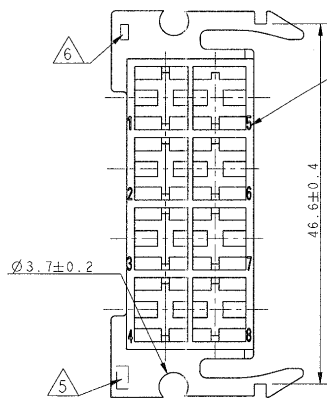
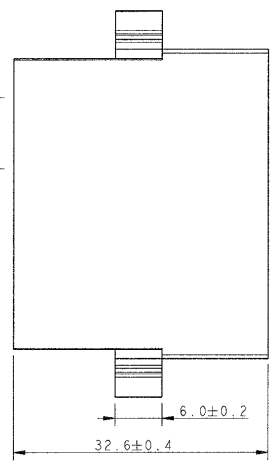
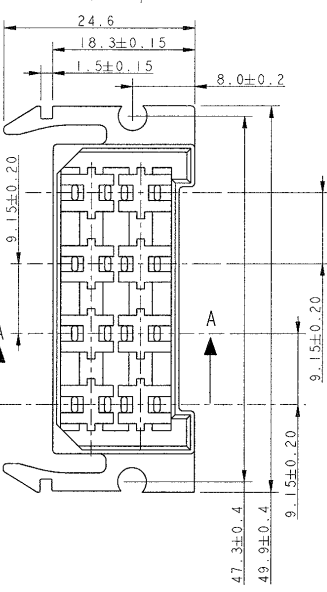
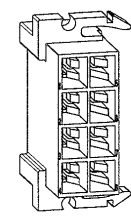
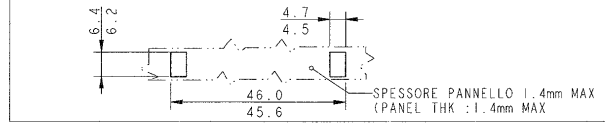
REVISIONS				
P	LTR	DESCRIPTION	DATE	DWN APVD
U3		REVISED AND REDRAWN, ET00-0098-02	20 SEP 2002	HY CT
U4		REVISED PER ECO-09-025699	19DEC09	KK AEG



DIMENSIONI PER IL MONTAGGIO (MOUNTING DIMENSIONS)
 PER IL BLOCCAGGIO PERPENDICOLARE AL PANNELLO DEI BLOCCETTI
 P/N 280430 O P/N 163008
 (FOR FASTENING HSG P/N 280430 OR P/N 163008 PERPENDICULAR WITH PANEL.)



DIMENSIONI PER IL MONTAGGIO (MOUNTING DIMENSIONS)
 PER IL BLOCCAGGIO PARALLELO AL PANNELLO DEI BLOCCETTI
 P/N 280430 O P/N 163008
 (FOR FASTENING HSG P/N 280430 OR P/N 163008 IN PARALLEL WITH THE PANEL.)



- 1 RISERVATO PER AMP DE FRANCE (RESTRICTED FOR AMP DE FRANCE)
- 2 RISERVATO "PHILCO" (RESTRICTED FOR "PHILCO")
- 3 VERSIONE NON DISPONIBILE IN AMP ITALIA (NOT AVAILABLE FROM AMP ITALY)
- 4 VERSIONE "GLOW WIRE" ("GLOW WIRE" VERSION)
- 5 MARCHIO DI FABBRICA (TRADE MARK)
- 6 NUMERO DI IMPRONTA STAMPO (MOULD CAVITY IDENTIFICATION NO)
- 7 OBSOLETE PARTS: OBSOLETE CIS STREAMLINING PER D.RENAUD/D.SINISI

COLORE (COLOUR)	MATERIALE (MATERIAL)	NUMERO (PART NUMBER)	REV
NATURALE (NATURAL)	ZYTEL 135F	4-280430-0	U
NATURALE (NATURAL)	PA 6,6 (PA 6.6 UNFILLED)	3-280430-0	U
NATURALE (NATURAL)		2-280430-0	U
NERO (BLACK)		0-280430-5	U
ROSSO (RED)	PA 6,6 (PA 6.6 UNFILLED)	0-280430-1	U
NATURALE (NATURAL)		0-280430-0	U

THIS DRAWING IS A CONFIDENTIAL DOCUMENT FOR TYCO ELECTRONICS CORPORATION IT IS SUBJECT TO EXPORT AND THE CONTROLLING EMBASSY'S ORGANIZATION SHOULD BE CONTACTED FOR THE LATEST REVISION.

DIMENSIONS:	TOLERANCES UNLESS OTHERWISE SPECIFIED:
mm	0 PLC ±
	1 PLC ±0.3
	2 PLC ±
	3 PLC ±
	4 PLC ±
	ANGLES ±2°
MATERIAL	FINISH
SEE TABLE	SEE TABLE

DWN H. YAALI	10 JUL 2002		tyco Electronics AMP ITALIA S.p.A. Corso F.lli Cervi, 15 COLLENO (TO)	
APVD C. TARTARI			FASTIN-FASTON* Connector, .250" srs. TAB HOUSING, 8 POSITIONS	
PRODUCT SPEC 108-20020	APPLICATION SPEC	SIZE A3	CAGE CODE 00779	DRAWING NO C=280430
MATERIAL WEIGHT 8.16 g		CUSTOMER DRAWING SCALE 2. SHEET 1 OF 1 REV U4		