

OGA DIAGONAL: 16.12 [409.47]  
 VA DIAGONAL: 15.41 [391.41]  
 PA DIAGONAL: 14.54 [369.26]

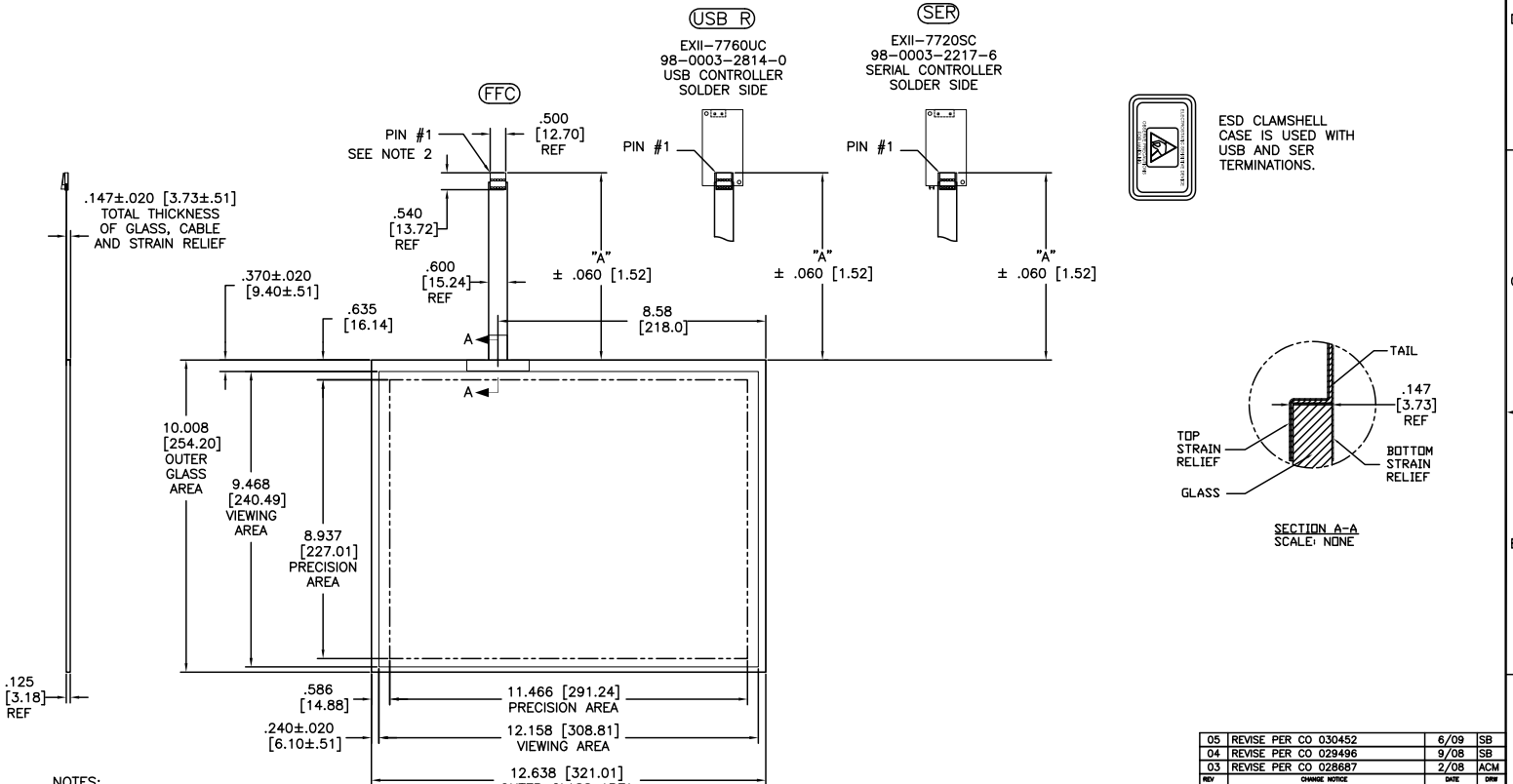
TOP LEVEL NUMBER	SKU 98 NUMBER	TYPE	DIM "A" (TOTAL GLASS TO CONNECTOR)	A/G FINISH	PROD SPEC
17-8771-204	98-0003-2650-8	FFC	6.00" [152.40]	AG500	23655
17-8771-223	98-0003-2654-0	SER	6.00" [152.40]	AG500	23655
17-8771-205	98-0003-2200-2	FFC	8.00" [203.20]	AG500	23655
17-8771-220	98-0003-2653-2	USB R	6.00" [152.40]	AG500	23655
17-8771-226	98-0003-3123-5	USB R	8.00" [203.20]	AG500	23655

**(USB R)**  
 EXII-7760UC  
 98-0003-2814-0  
 USB CONTROLLER  
 SOLDER SIDE

**(SER)**  
 EXII-7720SC  
 98-0003-2217-6  
 SERIAL CONTROLLER  
 SOLDER SIDE



ESD CLAMSHELL CASE IS USED WITH USB AND SER TERMINATIONS.



- NOTES:**
- WEIGHT OF GLASS IN GRAMS: 622 ± 10%
  - 5 PIN AMP CONNECTOR LATCH STYLE HOUSING P/N: 487526-4  
 TIN CONTACTS P/N: 2-487406-4  
 HOUSING ORIENTED WITH LATCH DOWN

PINOUT	
1	LL
2	UL
3	SHLD
4	UR
5	LR

UNITS	INCHES [MM]
TOLERANCES UNLESS OTHERWISE SPECIFIED	
.X	±
.XX	±.03 [.76]
.XXX	±.015 [.38]
ANGLES	±1°

**3M** 3M TOUCH SYSTEMS  
 METHUEN, MA  
 USA

THIS DOCUMENT IS COPYRIGHTED PROPERTY OF THE 3M COMPANY AND MAY NOT BE REPRODUCED WITHOUT THE WRITTEN PERMISSION OR USED OR DISCLOSED FOR OTHER THAN AUTHORIZED PURPOSES.

DRAWN: K. CROWLEY 9/05

REV	CHANGE NOTICE	DATE	DRW
05	REVISE PER CO 030452	6/09	SB
04	REVISE PER CO 029496	9/08	SB
03	REVISE PER CO 028687	2/08	ACM

MARKETING DRAWING  
 SCT32NN 15.41"

DO NOT SCALE DRAWING  
 SCALE 1 = 1

DOC FORMAT AUTOCAD SHEET 1 OF 1  
 C DOCUMENT NO. 28317-MKT REV 05