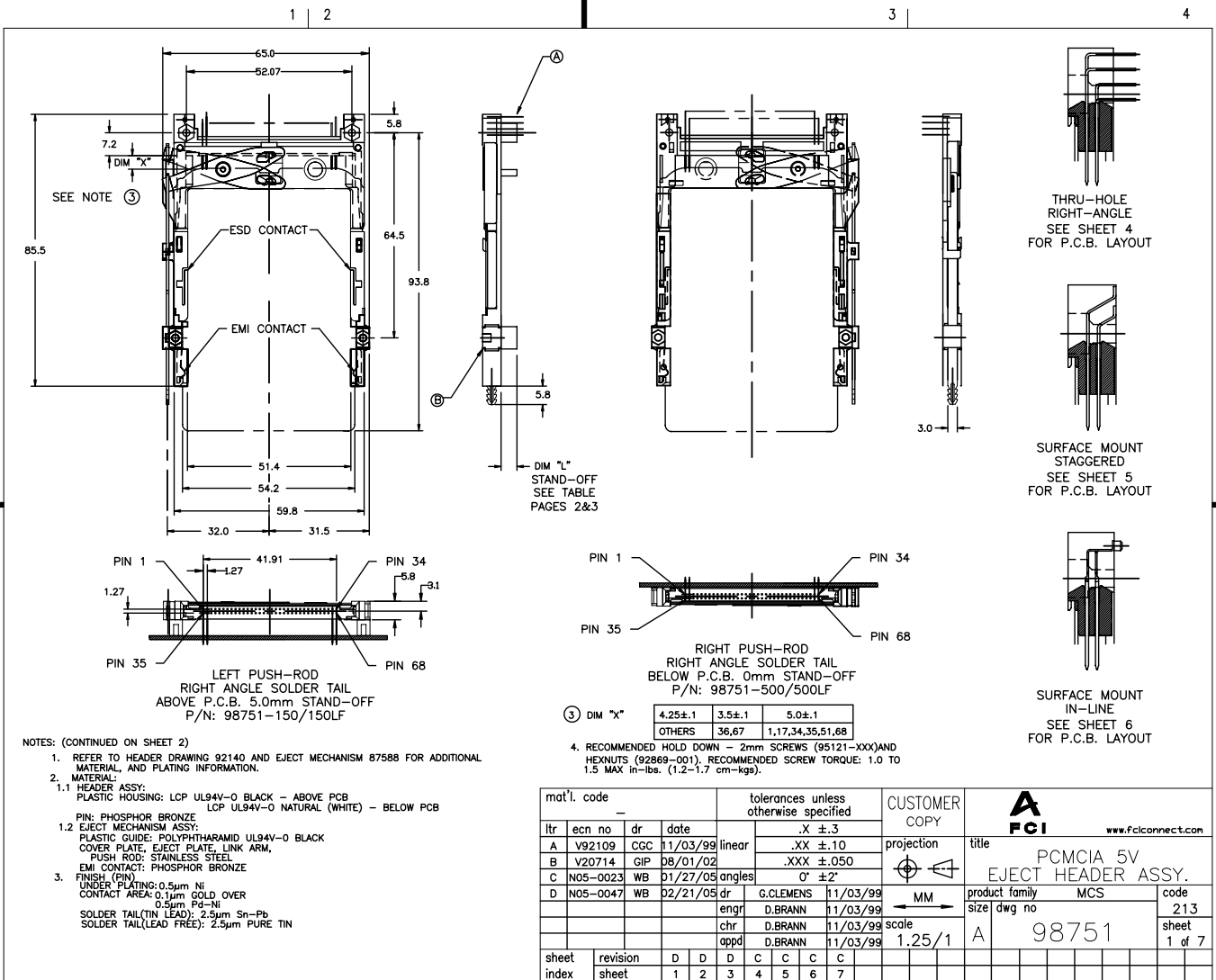


Tous droits strictement réservés. Reproduction ou communication à des tiers
interdite sous quelque forme que ce soit sans autorisation écrite du propriétaire.
Propriété de c FCI. Droits de reproduction FCI.

All rights strictly reserved. Reproduction or issue to third parties in any
form whatever is not permitted without written authority from the Proprietor.
Property of FCI. Copyright FCI.



NOTES: (CONTINUED ON SHEET 2)

- REFER TO HEADER DRAWING 92140 AND EJECT MECHANISM 87588 FOR ADDITIONAL MATERIAL, AND PLATING INFORMATION.
- MATERIAL:
 - 1.1 HEADER ASSY:
PLASTIC HOUSING: LCP UL94V-0 BLACK - ABOVE PCB
LCP UL94V-0 NATURAL (WHITE) - BELOW PCB
 - 1.2 EJECT MECHANISM ASSY:
PLASTIC GUIDE: POLYPHTHAMID UL94V-0 BLACK
COVER PLATE, EJECT PLATE, LINK ARM,
PUSH ROD: STAINLESS STEEL
EMI CONTACT: PHOSPHOR BRONZE
- FINISH (FIN)
UNDER PLATING: 0.5µm Ni
CONTACT AREA: 0.1µm GOLD OVER
0.5µm Pd-Ni
SOLDER TAIL(TIN LEAD): 2.5µm Sn-Pb
SOLDER TAIL(LEAD FREE): 2.5µm PURE TIN

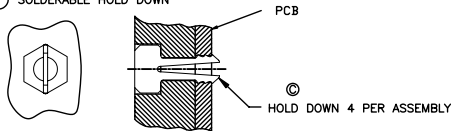
- RECOMMENDED HOLD DOWN - 2mm SCREWS (95121-XXX)AND
HEXNUTS (92869-001). RECOMMENDED SCREW TORQUE: 1.0 TO
1.5 MAX in-lbs. (1.2-1.7 cm-kgs).

mat'l. code		tolerances unless otherwise specified		CUSTOMER COPY		 www.fciconnect.com	
ltr	ecn no	dr	date	linear	.X ±.3	projection	title
A	V92109	CGC	11/03/99		.XX ±.10	 MM	PCMCIA 5V EJECT HEADER ASSY.
B	V20714	GIP	08/01/02		.XXX ±.050		product family
C	N05-0023	WB	01/27/09	angles	0° ±2'	size	MCS
D	N05-0047	WB	02/21/09	dr	G.CLEMENS 11/03/99	scale	code
				enrg	D.BRANN 11/03/99	1.25/1	213
				chr	D.BRANN 11/03/99		sheet
				appd	D.BRANN 11/03/99		1 of 7
sheet index	revision sheet	D	D	D	C	C	C
		1	2	3	4	5	6

DESCRIPTION: ABOVE P.C.B., DECK AND PUSH-ROD LOCATION ARE AS VIEWED BY USER.

PRODUCT NO. 98751-XXXX	PUSH ROD LOCATION	SOLDER TAIL ⑤	STAND-OFF HEIGHT DIM "L"	EJ. HEADER ASSY 92140-XXX ⑥	EJ. MECHANISM ASSY 87588-XXX ⑦	SOLDERABLE HOLD DOWN (4) ⑧	MOUNTING STYLE TO PCB AND PUSH-ROD LOCATION	USED WITH/COMMENTS
000	RIGHT	R/A	0.0	000	000			
000H ⑩	RIGHT	R/A	0.0	000	000	93925-001		
001	RIGHT	SMT-STG	0.0	001	000			
002	RIGHT	SMT-IL	0.0	002	000			
050	RIGHT	R/A	5.0	020	005			
050H ⑩	RIGHT	R/A	5.0	020	005	93925-004		
005	RIGHT	R/A	0.0	005	000			98751-000 or -100
100	LEFT	R/A	0.0	000	001			
100H ⑩	LEFT	R/A	0.0	000	001	93925-001		
101	LEFT	SMT-STG	0.0	001	001			
102	LEFT	SMT-IL	0.0	002	001			
150	LEFT	R/A	5.0	020	005			
105	LEFT	R/A	0.0	005	001			98751-000 or -100
500	RIGHT	R/A	0.0	500	001			
500H	RIGHT	R/A	0.0	500	001	93925-001 ⑩		
501	RIGHT	SMT-STG	0.0	501	001			
502	RIGHT	SMT-IL	0.0	502	001			
503	RIGHT	SMT-IL	0.0	503	001			NO BOARD LOCATORS
550	RIGHT	R/A	5.0	520	007			
505	RIGHT	R/A	0.0	505	001			98751-500 or -600
600	LEFT	R/A	0.0	500	000			
600H	LEFT	R/A	0.0	500	000	93925-001 ⑩		
601	LEFT	SMT-STG	0.0	501	000			
602	LEFT	SMT-IL	0.0	502	000			
650	LEFT	R/A	5.0	520	005			
605	LEFT	R/A	0.0	505	000			98751-500 or -600

- NOTES: (CONTINUED FROM SHEET 1)
 ⑤ SOLDER TAIL KEY/PCB LAYOUT:
 R/A = RIGHT ANGLE PIN-THROUGH-HOLE-PAGE 4
 SMT-STG = STAGGERED SURFACE MOUNT-PAGE 5
 SMT-IL = SURFACE MOUNT IN-LINE (SINGLE ROW)-PAGE 6
 6. BOARD KEEP OUT ZONE- PAGE 7
 ⑦ SOLDERABLE HOLD DOWN



mat'l. code		tolerances unless otherwise specified		CUSTOMER COPY		www.Fciconnect.com	
ltr	ecn no	dr	date	linear	.X ±.3	projection	title
d					.XX ±.10		PCMCIA 5V
				angles	.XXX ±.050		EJECT HEADER ASSY.
				dr	0' ±2'	MM	product family
				enrg	G.CLEMENS 11/03/99	1:1	MCS
				chr	D.BRANN 11/03/99		size
				appd	D.BRANN 11/03/99		dwg no
sheet	revision						code
index	sheet						213
							sheet
							2 of

Tous droits strictement réservés. Reproduction ou communication à des tiers
 interdite sous quelque forme que ce soit sans autorisation écrite du propriétaire.
 Property of FCI. Copyright FCI.

All rights strictly reserved. Reproduction or issue to third parties in any
 form whatever is not permitted without written authority from the proprietor.
 Property of FCI. Copyright FCI.

DESCRIPTION: ABOVE P.C.B., DECK AND PUSH-ROD LOCATION ARE AS VIEWED BY USER.

PRODUCT NO. 98751-XXXX	PUSH ROD LOCATION	SOLDER TAIL Ⓢ	STAND-OFF HEIGHT DIM "L"	EJ. HEADER ASSY 92140-XXX Ⓐ	EJ. MECHANISM ASSY 87588-XXX Ⓑ	SOLDERABLE HOLD DOWN (4) Ⓒ	MOUNTING STYLE TO PCB AND PUSH-ROD LOCATION	USED WITH/COMMENTS
000LF	RIGHT	R/A	0.0	000LF	000			
000HLF Ⓣ	RIGHT	R/A	0.0	000LF	000	93925-001		
050LF	RIGHT	R/A	5.0	020LF	005			
050HLF Ⓣ	RIGHT	R/A	5.0	020LF	005	93925-004		
005LF	RIGHT	R/A	0.0	005LF	000			98751-000 or -100
100LF	LEFT	R/A	0.0	000LF	001			
100HLF Ⓣ	LEFT	R/A	0.0	000LF	001	93925-001		
150LF	LEFT	R/A	5.0	020LF	005			
105LF	LEFT	R/A	0.0	005LF	001			98751-000 or -100
500LF	RIGHT	R/A	0.0	500LF	001			
500HLF	RIGHT	R/A	0.0	500LF	001	93925-001 Ⓣ		
550LF	RIGHT	R/A	5.0	520LF	007			
505LF	RIGHT	R/A	0.0	505LF	001			98751-500 or -600
600LF	LEFT	R/A	0.0	500LF	000			
600HLF	LEFT	R/A	0.0	500LF	000	93925-001 Ⓣ		
650LF	LEFT	R/A	5.0	520LF	005			
605LF	LEFT	R/A	0.0	505LF	000			98751-500 or -600

NOTES: (CONTINUED FROM SHEET 2)

- IF LEAD FREE P/N, THE HOUSING WILL WITHSTAND EXPOSURE TO 260°C PEAK TEMPERATURE
SOLDER TAIL : SMT-IL, SMT-STG CAN RESIST 40 SECONDS IN A CONVECTION,
INFRA-RED OR VAPOR PHASE REFLOW OVEN.
SOLDER TAIL : R/A CAN RESIST 10 SECONDS IN A WAVE SOLDER APPLICATION
WITH A 1.00MM MINIMUM THICK CIRCUIT BOARD.
- IF LEAD FREE P/N, THE PRODUCT MEETS EUROPEAN UNION DIRECTIVES
AND OTHER COUNTRY REGULATIONS AS DESCRIBED IN GS-22-008
- IF LEAD FREE P/N, PACKAGING MEETS GS-14-920 SPECIFICATION

mat'l. code		tolerances unless otherwise specified		CUSTOMER COPY		 www.Fciconnect.com	
ltr	ecn no	dr	date	linear	.X ±.3	projection	title
d					.XX ±.10	 MM	PCMCIA 5V
				angles	.XXX ±.050		EJECT HEADER ASSY.
				dr	0° ±2'	product family	MCS
				enrg	G.CLEMENS 11/03/99	size	dwg no
				chr	D.BRANN 11/03/99	scale	98751
				appd	D.BRANN 11/03/99	1:1	code
sheet	revision						213
index	sheet						3 of

ACAD

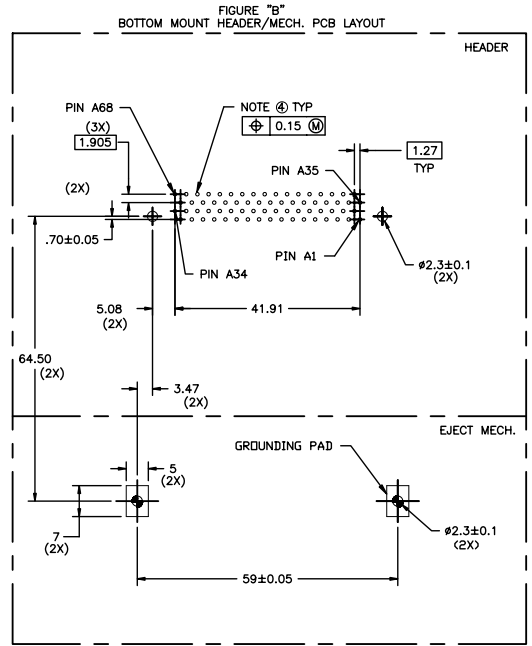
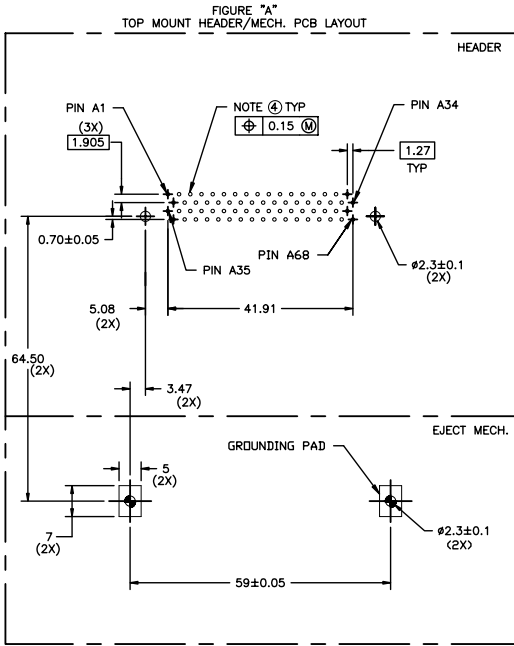
PDM: Rev:D

STATUS Released 2.6 Printed: Oct 12, 2014

Tous droits strictement reserves. Reproduction ou communication a des tiers
 interdite sous quelque forme que ce soit sans autorisation ecrite du proprietaire.
 Property of FCI. Copyright FCI.

All rights strictly reserved. Reproduction or issue to third parties in any
 form whatever is not permitted without written authority from the proprietor.
 Property of FCI. Copyright FCI.

Single Mount Right Angle



BOARD VIEW FROM CONNECTOR MOUNTED SIDE
TOP OF BOARD IN APPLICATION

BOARD VIEW FROM CONNECTOR MOUNTED SIDE
BOTTOM OF BOARD IN APPLICATION

NOTES:

- 1 ALL TOLERANCES ±0.15 UNLESS NOTED.
- 2 KEEP-OUT ZONE FOR HEADERS W\STAND-OFF OPTIONS SEE SHEET 7 FIGURE A.
- 3 KEEP-OUT ZONE FOR HEADERS W\O STAND-OFF OPTIONS SEE SHEET 7 FIGURE B.
- ④ RECOMMENDED DIAMETER IS #1.0. FOR PROCESSES USING PASTE REFLOW, HOLE MAY BE AS SMALL AS #0.79

mat'l. code		tolerances unless otherwise specified		CUSTOMER COPY		 www.Fciconnect.com	
ltr	ecn no	dr	date	linear	.X ±.3	projection	title
c					.XX ±.10	 MM	PCMCIA 5V EJECT HEADER ASSY.
				angles	.XXX ±.050		product family
				dr	0° ±2°	size	dwg no
				engr	G.PETERS 08/01/02	scale	98751
				chr	D.BRANN 08/01/02	1:1	code
				appd	G.PETERS 08/01/02		213
					D.BRANN 08/01/02		sheet
sheet index	revision sheet						4 of

ACAD

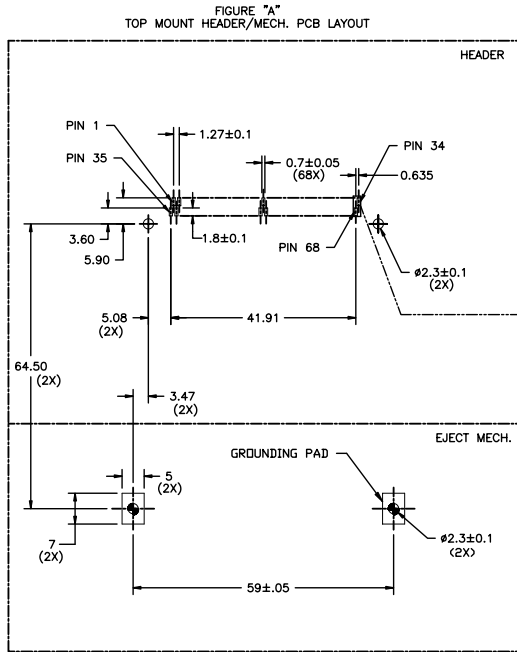
PDM: Rev:D

STATUS: Released 2.6 Printed: Oct 12, 2014

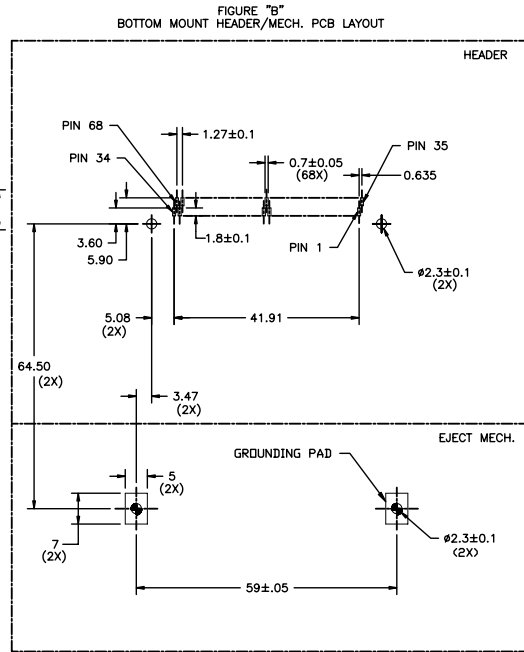
Tous droits strictement reserves. Reproduction ou communication a des tiers
 interdite sous quelque forme que ce soit sans autorisation ecrite du proprietaire.
 Propriete de c FCI. Droits de reproduction FCI.

All rights strictly reserved. Reproduction or issue to third parties in any
 form whatever is not permitted without written authority from the proprietor.
 Property of FCI. Copyright FCI.

Surface Mount 2-Row



BOARD VIEW FROM CONNECTOR MOUNTED SIDE
TOP OF BOARD IN APPLICATION



BOARD VIEW FROM CONNECTOR MOUNTED SIDE
BOTTOM OF BOARD IN APPLICATION

NOTES:

- 1 ALL TOLERANCES ±0.15 UNLESS NOTED.
- 2 KEEP-OUT ZONE FOR ASSEMBLIES SHOWN ON SHEET 7 FIGURE B.

mat'l. code		tolerances unless otherwise specified		CUSTOMER COPY		 www.Fciconnect.com	
ltr	ecn no	dr	date	linear	.X ±.3	projection	title
c					.XX ±.10	 MM	PCMCIA 5V EJECTOR HEADER ASSY.
				angles	.XXX ±.050		product family
				dr	0° ±2'	size	MCS
				enrg		dwg no	213
				chr	G.PETERS 08/01/02	scale	98751
				appd	D.BRANN 08/01/02	1:1	5 of
sheet index	revision sheet						

ACAD

PDM: Rev:D

STATUS Released 2.6 Printed: Oct 12, 2010

Tous droits strictement reserves. Reproduction ou communication a des tiers
 interdite sous quelque forme que ce soit sans autorisation ecrite du proprietaire.
 Propriete de c FCI. Droits de reproduction FCI.

All rights strictly reserved. Reproduction or issue to third parties in any
 form whatever is not permitted without written authority from the proprietor.
 Property of FCI. Copyright FCI.

Surface Mount In-Line

FIGURE "A"
TOP MOUNT HEADER/MECH. PCB LAYOUT

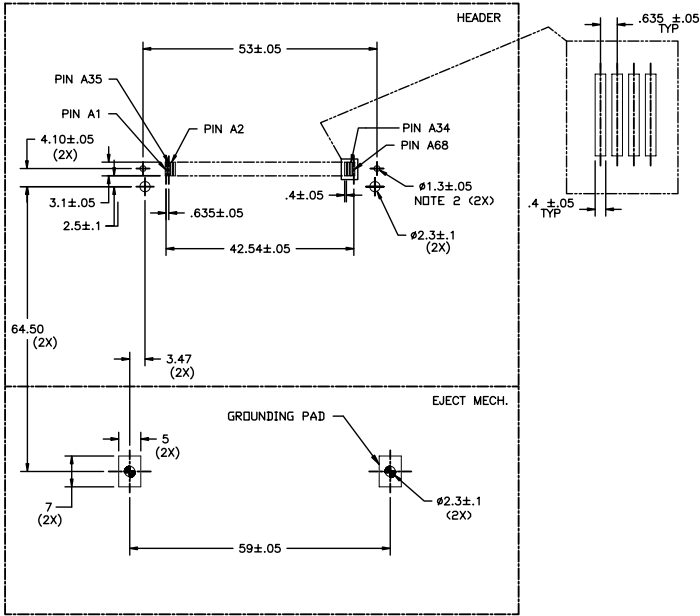
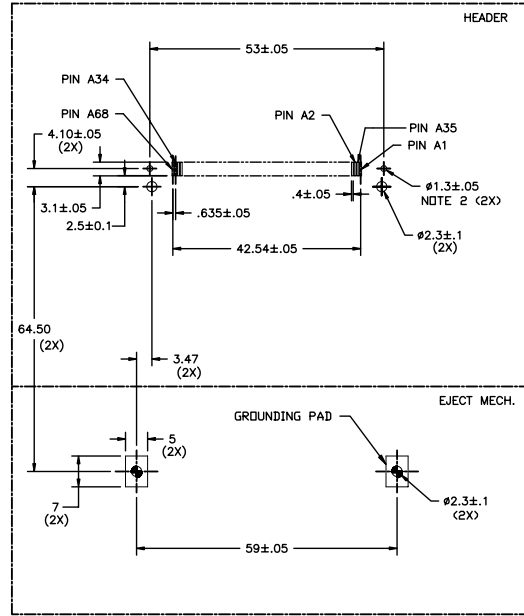


FIGURE "B"
BOTTOM MOUNT HEADER/MECH. PCB LAYOUT



BOARD VIEW FROM CONNECTOR MOUNTED SIDE
TOP OF BOARD IN APPLICATION

BOARD VIEW FROM CONNECTOR MOUNTED SIDE
BOTTOM OF BOARD IN APPLICATION

NOTES:

- 1 ALL TOLERANCES ±.15 UNLESS NOTED.
- 2 THIS HOLE REQUIRED FOR HEADERS WITH BOARD LOCATOR.
- 3 KEEP-OUT ZONE FOR ASSEMBLIES SHOWN ON SHEET 7 FIGURE B.

mat'l. code		tolerances unless otherwise specified		CUSTOMER COPY		 www.Fciconnect.com	
ltr	ecn no	dr	date	linear	.X ±.3	projection	title
c					.XX ±.10	 MM	PCMCIA 5V EJECT HEADER ASSY.
				angles	.XXX ±.050		product family
				dr	0° ±2°	size	dwg no
				engr		scale	98751
				chr	G.PETERS 08/01/02	1:1	code
				appd	D.BRANN 08/01/02		213
sheet	revision						6 of
index	sheet						

B

B

Tous droits strictement reserves. Reproduction ou communication a des tiers
 interdite sous quelque forme que ce soit sans autorisation ecrite du proprietaire.
 Propriete de c FCI. Droits de reproduction FCI.

All rights strictly reserved. Reproduction or issue to third parties in any
 form whatever is not permitted without written authority from the proprietor.
 Property of FCI. Copyright FCI.

Board Keep Out Zone (NOT INCLUDING HEADER)

FIGURE "A"
KEEP OUT ZONE FOR STANDOFF VERSION

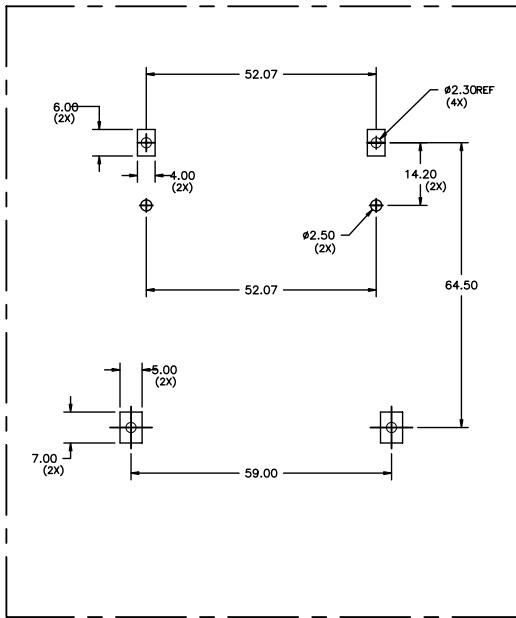
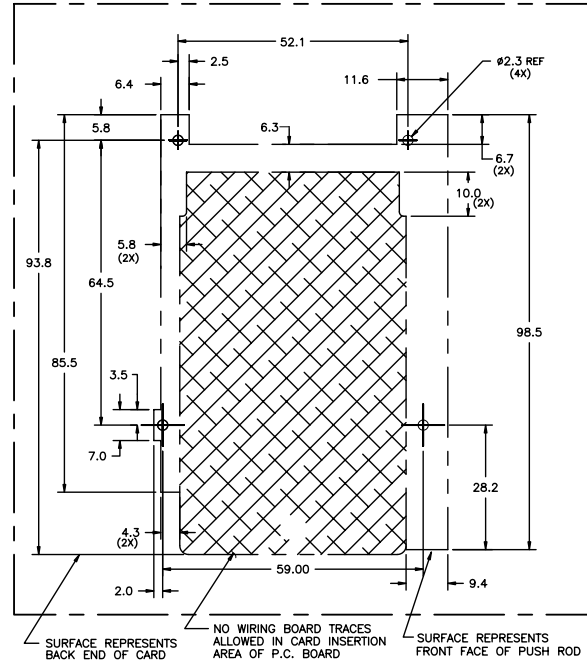


FIGURE "B" NOTE 1
KEEP OUT ZONE FOR NO STANDOFF VERSION
RIGHT HAND PUSHROD VERSION SHOWN
MIRROR IMAGE FOR LEFT HAND PUSHROD



Tous droits strictement réservés. Reproduction ou communication à des tiers interdite sous quelque forme que ce soit sans autorisation écrite du propriétaire. Propriété de c FCI. Droits de reproduction FCI.

All rights strictly reserved. Reproduction or issue to third parties in any form whatever is not permitted without written authority from the proprietor. Property of FCI. Copyright FCI.

NOTES:

- ① ALL DIMENSIONS SHOWN ARE NOMINAL AND DEFINE THE OUTSIDE SURFACES OF THE ASSEMBLY. A MINIMUM OF 0.25mm (0.010") CLEARANCE BETWEEN THE ASSEMBLY AND ANY COMPONENTS IS SUGGESTED.

mat'l. code		tolerances unless otherwise specified		CUSTOMER COPY		 www.Fciconnect.com	
ltr	ecn no	dr	date	linear	.X ±.3	projection	title
c					.XX ±.10	 MM	PCMCIA 5V EJECT HEADER ASSY.
				angles	.XXX ±.050		product family
				dr	0° ±2'	size	dwg no
				enrg	G.PETERS 08/01/02	scale	98751
				chr	D.BRANN 08/01/02	1:1	code
				appd	G.PETERS 08/01/02		213
					D.BRANN 08/01/02		sheet
sheet index	revision sheet						7 of