

Tous droits strictement réservés. Reproduction ou communication e des plans
Interdite sous quelque forme que ce soit sans autorisation écrite du propriétaire.
Property of FCI. Droits de reproduction FCI.



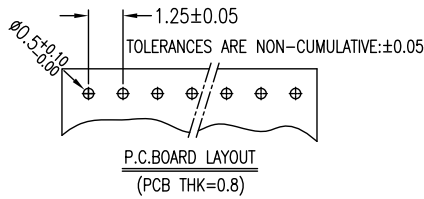
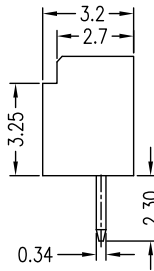
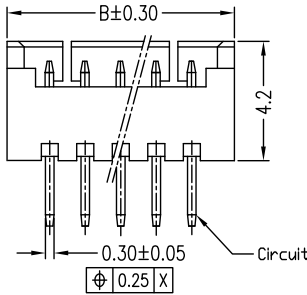
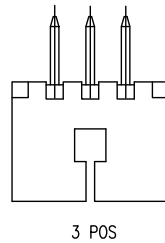
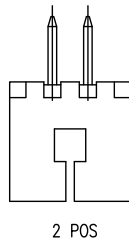
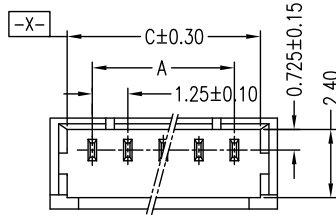
All rights strictly reserved. Reproduction or issue to third parties in any
form whatsoever is not permitted without written authority from the proprietor.
Property of FCI. Copyright FCI.

NOTES

- SPECIFICATIONS**
Current Rating: 1A AC,DC
Voltage Rating: 125V AC,DC
Temperature Range: -40°C ~ +105°C
Contact Resistance: 20mΩ Max.
Insulation Resistance: 100MΩ Min.
Withstanding Voltage: 500V AC/minute
- Material & finish:**
Housing: Natural Thermoplastic, UL94V-0
Contact and metal hold-down: Phosphor Bronze
Plating of contact: Matte Tin or gold plating over Nickel
- Ordering Information & Dimensions:**
10114829- X X X XX LF
Material: LCP
LF: See note A
pin counts from 02-15
Plating: 0: Matte Tin
1: Gold Flash
Packaging: 1: Tape & Reel

Part No.	Dimensions			
	POS	A	B	C
10114829-xxx02LF	2	1.25±0.10	4.25	3.05
10114829-xxx03LF	3	2.50±0.10	5.50	4.30
10114829-xxx04LF	4	3.75±0.10	6.75	5.55
10114829-xxx05LF	5	5.00±0.10	8.00	6.80
10114829-xxx06LF	6	6.25±0.15	9.25	8.05
10114829-xxx07LF	7	7.50±0.15	10.50	9.30
10114829-xxx08LF	8	8.75±0.15	11.75	10.55
10114829-xxx09LF	9	10.00±0.15	13.00	11.80
10114829-xxx10LF	10	11.25±0.20	14.25	13.05
10114829-xxx11LF	11	12.50±0.20	15.50	14.30
10114829-xxx12LF	12	13.75±0.20	16.75	15.55
10114829-xxx13LF	13	15.00±0.20	18.00	16.80
10114829-xxx14LF	14	16.25±0.20	19.25	18.05
10114829-xxx15LF	15	17.50±0.20	20.50	19.30

Note A: The LF means RoHS compliance, the housing will withstand exposure to peak temperature 260 degree C for 5 sec in the IR re-flow process.



mat'l. code		tolerances unless otherwise specified		CUSTOMER COPY	FCI	www.fciconnect.com
lfr	ecn no	dr	date	.X ± 0.25	projection	title
A	T10-0145	J H	12/1/10	.XX ± 0.15		
				.XXX ±	MM	product family
				angles		
				0° ±2°	scale	size
				dr JASON HSU 12/1/10		
				engr JASON HSU 12/1/10	A4	10114829
				chr GARY HSIEH 12/1/10		
				appd JOSEPH HSIA 12/1/10	22526	TWN
sheet index	revision sheet	A	1			1 of 1

AC:AT

PDM: Rev:A

STATUS:Released

Printed: Dec 14, 2010