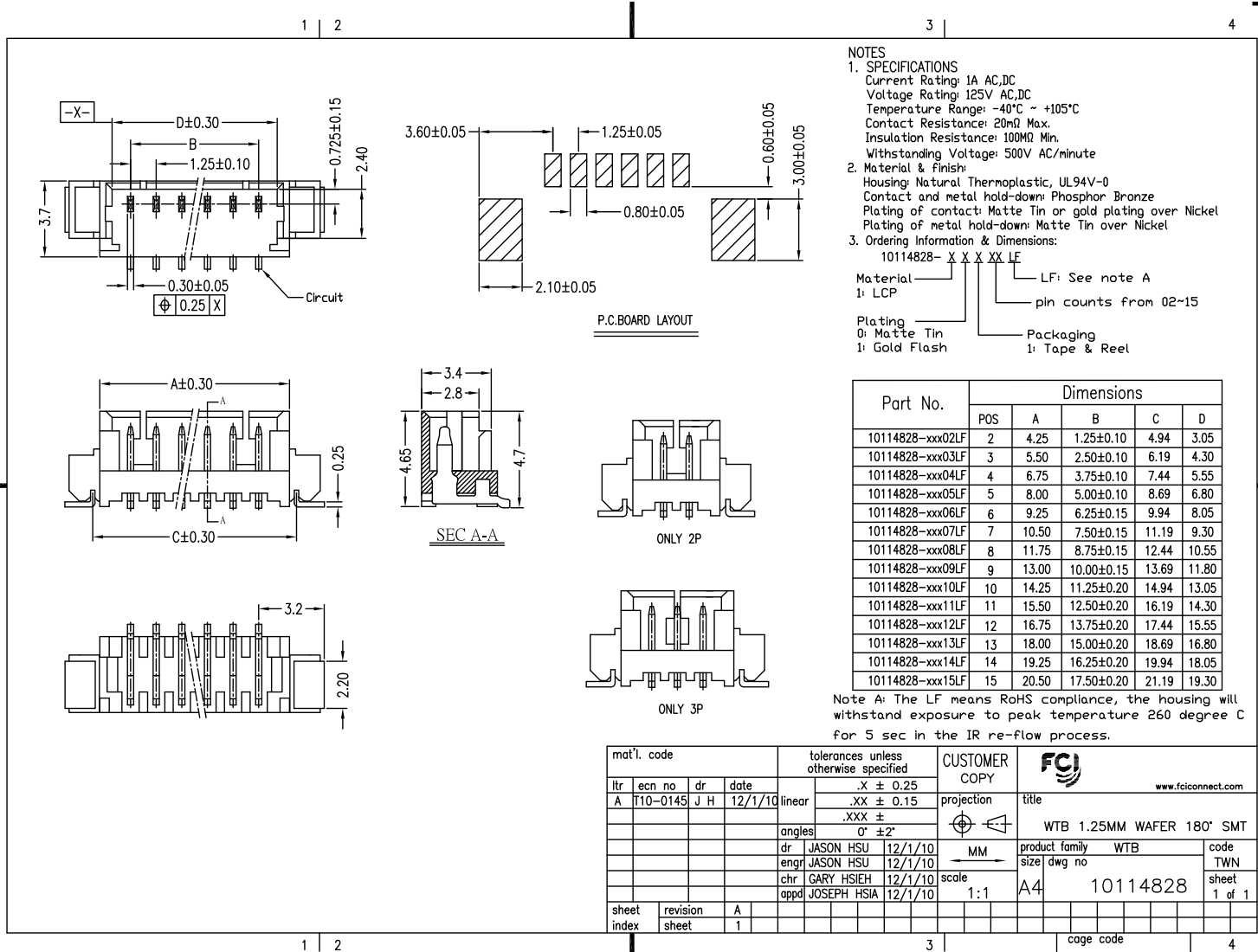


Tous droits strictement réservés. Reproduction ou communication e des plans  
Interdite sous quelque forme que ce soit sans autorisation écrite du propriétaire.  
Property of FCI. Copyright FCI. Droits de reproduction FCI.



All rights strictly reserved. Reproduction or issue to third parties in any  
form whatsoever is not permitted without written authority from the proprietor.  
Property of FCI. Copyright FCI.



NOTES  
 1. SPECIFICATIONS  
 Current Rating: 1A AC,DC  
 Voltage Rating: 125V AC,DC  
 Temperature Range: -40°C ~ +105°C  
 Contact Resistance: 20mΩ Max.  
 Insulation Resistance: 100MΩ Min.  
 Withstanding Voltage: 500V AC/minute  
 2. Material & Finish  
 Housing: Natural Thermoplastic, UL94V-0  
 Contact and metal hold-down: Phosphor Bronze  
 Plating of contact: Matte Tin or gold plating over Nickel  
 Plating of metal hold-down: Matte Tin over Nickel  
 3. Ordering Information & Dimensions:  
 10114828- X X X X LF  
 Material: LCP  
 LF: See note A  
 pin counts from 02-15  
 Plating:  
 0: Matte Tin  
 1: Gold Flash  
 Packaging:  
 1: Tape & Reel

Part No.	Dimensions			
	POS	A	B	D
10114828-xxx02LF	2	4.25	1.25±0.10	4.94
10114828-xxx03LF	3	5.50	2.50±0.10	6.19
10114828-xxx04LF	4	6.75	3.75±0.10	7.44
10114828-xxx05LF	5	8.00	5.00±0.10	8.69
10114828-xxx06LF	6	9.25	6.25±0.15	9.94
10114828-xxx07LF	7	10.50	7.50±0.15	11.19
10114828-xxx08LF	8	11.75	8.75±0.15	12.44
10114828-xxx09LF	9	13.00	10.00±0.15	13.69
10114828-xxx10LF	10	14.25	11.25±0.20	14.94
10114828-xxx11LF	11	15.50	12.50±0.20	16.19
10114828-xxx12LF	12	16.75	13.75±0.20	17.44
10114828-xxx13LF	13	18.00	15.00±0.20	18.69
10114828-xxx14LF	14	19.25	16.25±0.20	19.94
10114828-xxx15LF	15	20.50	17.50±0.20	21.19

Note A: The LF means RoHS compliance, the housing will withstand exposure to peak temperature 260 degree C for 5 sec in the IR re-flow process.

mat'l. code				tolerances unless otherwise specified		CUSTOMER COPY		FCI		www.fciconnect.com	
lfr	ecn no	dr	date	.X ± 0.25		projection		title			
A	T10-0145	J H	12/1/10	.XX ± 0.15		MM		WTB 1.25MM WAFER 180° SMT			
				.XXX ±		scale		product family		code	
				0° ±2°		1:1		WTB		TWN	
				dr JASON HSU 12/1/10				size		sheet	
				engr JASON HSU 12/1/10				10114828		1 of 1	
				chr GARY HSIEH 12/1/10							
				appd JOSEPH HSIA 12/1/10							
sheet index	revision sheet	A	1								