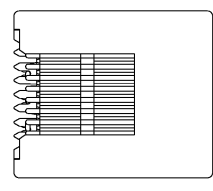
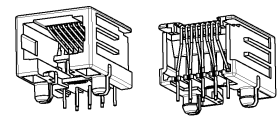
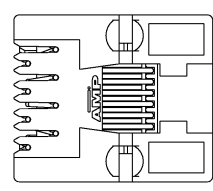
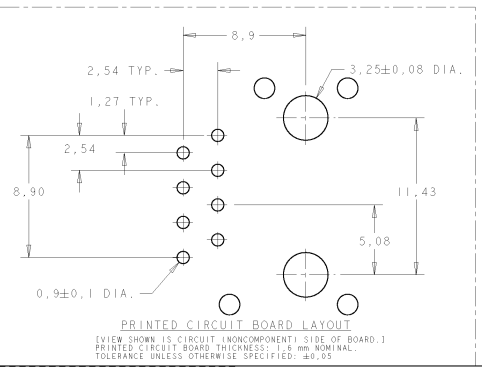
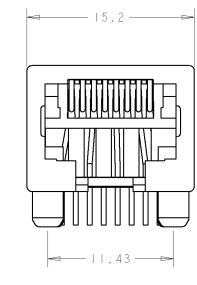
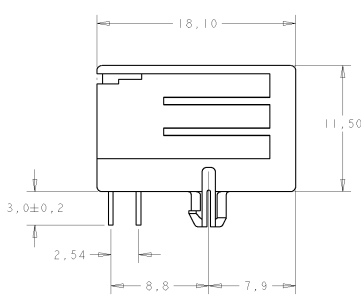
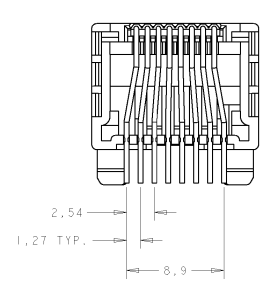


THIS DRAWING IS UNPUBLISHED. RELEASED FOR PUBLICATION DATE: -
 (C) COPYRIGHT BY Tyco Electronics Nederland B.V. ALL RIGHTS RESERVED.

REVISIES		REVISIONS
LTR	DESCRIPTION	DATE APPROV
A	EH10-0183-05	10 FEB 05 JB
-	-	-
-	-	-
-	-	-



NOTE:
 1 TOLERANCE UNLESS OTHERWISE SPECIFIED: ±0,15.



200 PIECES IN A TRAY	8 POS. / 8 CONTACTS	FINISH	MATERIAL	ORDER NUMBER
TAPE MOUNTED 200 P.C.C. (REEL)	REMARKS			

DIMENSIONS: mm 	TOLERANCES UNLESS OTHERWISE SPECIFIED: 0 PLC ± * 1 PLC ± * 2 PLC ± * 3 PLC ± * 4 PLC ± * 5 PLC ± * ANGLES ± 0,1°	DWG: JVDHELDEN CHK: P.WILLEMS DTD: JBROEKSTEEG PRODUCT SPEC: - APPLICATION SPEC: 14-180B WEIGHT: -	AMP Tyco Electronics Nederland B.V. 's-HERTOEGEDEREN, THE NETHERLANDS MODULAR JACK SIDE ENTRY, 8 POS., FOR PRINTED CIRCUIT BOARD. SIZE: A2 CASE CODE: 00779 DRAWING NO: 1705951 SCALE: 4:1 SHEET 1 OF 1 REV A
-----------------------	---	---	---

AMP 1471-9 REV. 05/00/03