

4

3

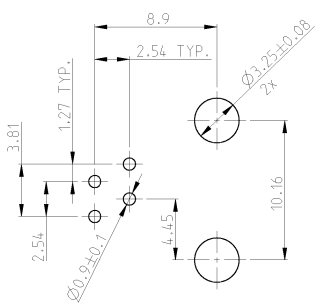
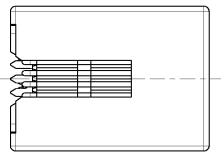
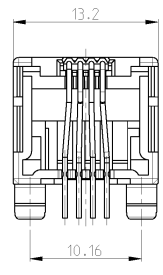
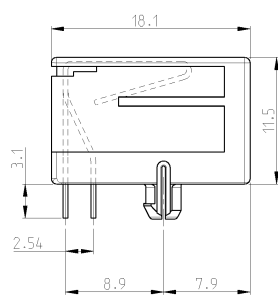
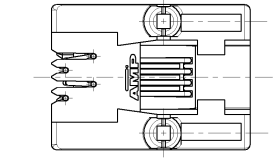
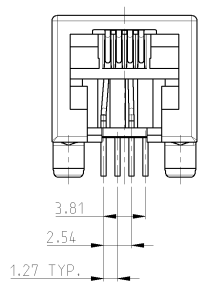
2

1

THIS DRAWING IS UNPUBLISHED. RELEASED FOR PUBLICATION 2000
BY TICO ELECTRONICS CORPORATION. ALL RIGHTS RESERVED.

- 1 SEE SHEET 1 FOR MODULAR JACK 6 POS./6 CONTACTS.
- 2 FOR APPLICATION INFORMATION SEE AMP SPEC. 114-19019.
- 3 TOLERANCES UNLESS OTHERWISE SPECIFIED: ± 0.15 .

REV. NO.	DATE	BY	DESCRIPTION
1	-	-	SEE SHEET 1



PRINTED CIRCUIT BOARD LAYOUT (6 POS./4 CONTACT)

[VIEW SHOWN IS CIRCUIT (NONCOMPONENT) SIDE OF BOARD]
PRINTED CIRCUIT BOARD THICKNESS: 1.6 mm NOMINAL.
TOLERANCES UNLESS OTHERWISE SPECIFIED: ± 0.05 .

240 PIECES IN A TRAY	6 POS./ 4 CONTACTS	IN CONTACT AREA: 0.15 μ m MIN. SEL. GOLD OVER 1.2 μ m MIN. NICKEL	HOUSING COLOR BLACK: PBT, UL 94 V-0	1-1705950-2
TAPE MOUNTED 800 PCS/REEL		SOLDER FINISH: 2.5 μ m MIN. TIN OVER 1.2 μ m MIN. NICKEL	CONTACT INSERT: PBT, UL 94 V-0	1705950-2
PACKAGING	REMARKS	FINISH	MATERIAL	P/N

DIMENSIONS: mm 	DIMENSIONS: mm 	DIMENSIONS: mm 	DIMENSIONS: mm 	DIMENSIONS: mm 	DIMENSIONS: mm
D PLC 1 PLC 2 PLC 3 PLC 4 PLC 5 PLC 6 PLC ANGLES MATERIAL FINISH	D PLC 1 PLC 2 PLC 3 PLC 4 PLC 5 PLC 6 PLC ANGLES MATERIAL FINISH	D PLC 1 PLC 2 PLC 3 PLC 4 PLC 5 PLC 6 PLC ANGLES MATERIAL FINISH	D PLC 1 PLC 2 PLC 3 PLC 4 PLC 5 PLC 6 PLC ANGLES MATERIAL FINISH	D PLC 1 PLC 2 PLC 3 PLC 4 PLC 5 PLC 6 PLC ANGLES MATERIAL FINISH	D PLC 1 PLC 2 PLC 3 PLC 4 PLC 5 PLC 6 PLC ANGLES MATERIAL FINISH

4

3

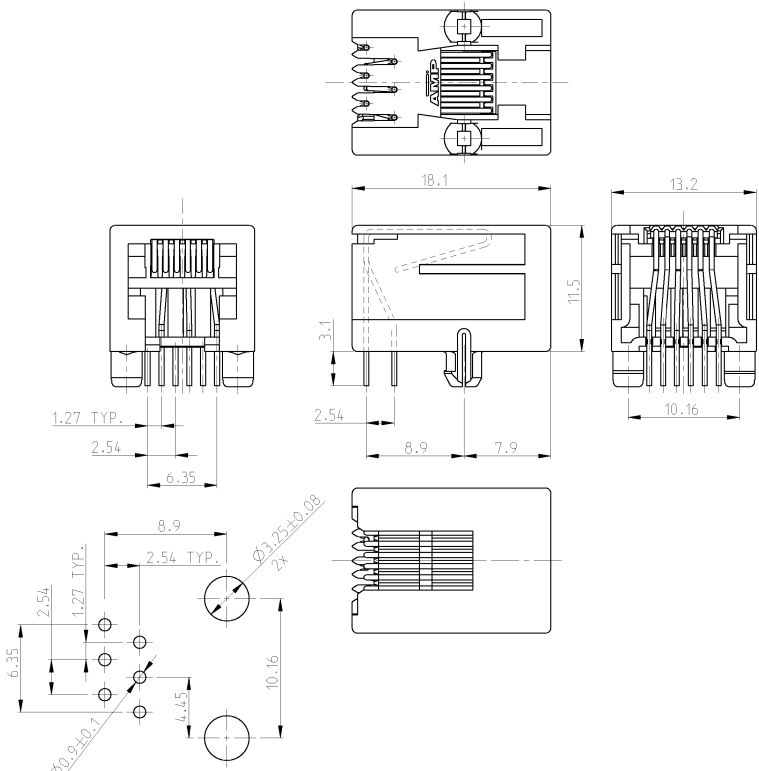
2

1

THIS DRAWING IS UNPUBLISHED. RELEASED FOR PUBLICATION BY TICO ELECTRONICS CORPORATION. ALL RIGHTS RESERVED.

- 1 SEE SHEET 2 FOR MODULAR JACK 6 POS./6 CONTACTS
- 2 FOR APPLICATION INFORMATION SEE AMP SPEC. 114-19019.
- 3 TOLERANCES UNLESS OTHERWISE SPECIFIED: ± 0.15mm.

REV. NO.	DATE	BY	CHKD.	DESCRIPTION
A	14 FEB 05	JVGH	JB	EHTD-0183-05



PRINTED CIRCUIT BOARD LAYOUT (6 POS./6 CONTACTS)
 [VIEW SHOWN IS CIRCUIT (NONCOMPONENT) SIDE OF BOARD]
 PRINTED CIRCUIT BOARD THICKNESS: 1.6 mm NOMINAL.
 TOLERANCES UNLESS OTHERWISE SPECIFIED: ± 0.05

240 PIECES IN A TRAY	6 POS./6 CONTACTS.	IN CONTACT AREA: 0.15 µm MIN. SEL. GOLD OVER 1.2 µm MIN. NICKEL.	HOUSING COLOR BLACK PBT, UL 94 V-0	1-1705950-1
TAPE MOUNTED 800 PCS/REEL		SOLDER TINES: 2.5 µm MIN. TIN OVER 1.2 µm MIN. NICKEL.	CONTACT INSERT: PBT, UL 94 V-0	1705950-1
PACKAGING	REMARKS	FINISH	MATERIAL	P/N
DIMENSIONS: min 0 PLC 80- 1 PLC 80-1 2 PLC 80-01 3 PLC 80-001 4 PLC 80-0001 ANGLES MATERIAL FINISH		DW: J.V.D. HEIJLEN CK: E.W. IJLLEMA AP: J. BRONKHORST DATE: 14 FEB 05 APPLICATION SPEC: 114-19019 WEIGHT: - CUSTOMER DRAWING	Tico Electronics Oostkamp - Belgium MODULAR JACK, SIDE ENTRY, 6/6 FOR PRINTED CIRCUIT BOARD	SIZE: A2 CASE CODE: 100779 DRAWING NO: 1705950 RESTRICTED TO: - SCALE: 4:1 SHEET: 1 OF 2 REV: A