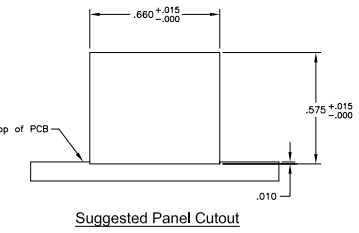
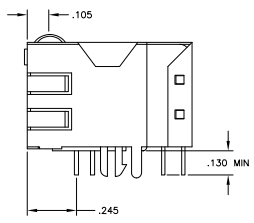
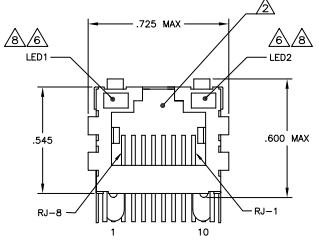
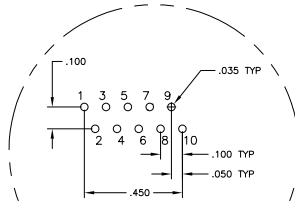
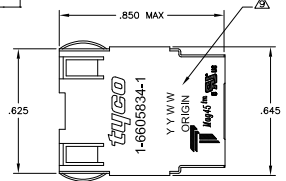


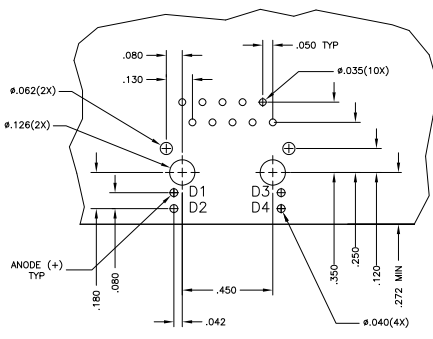
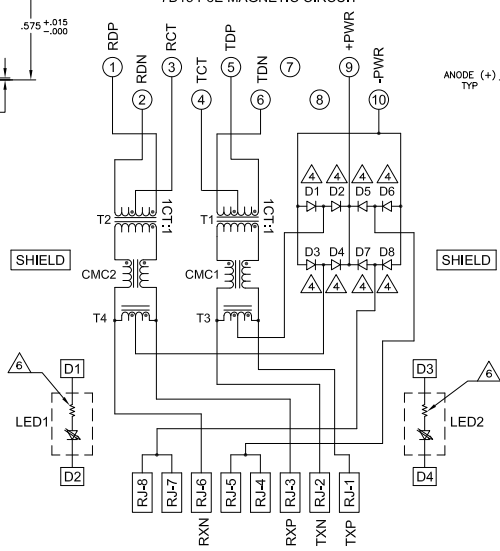
| REV | DATE | DESCRIPTION | BY | CHK | APP |
|-----|------|--------------------------|----|-----|-----|
| AA | 22 | | | | |
| A | | REV PER EC: 0513-0644-04 | | | |

MECHANICAL:



ELECTRICAL:

7D15 PoE MAGNETIC CIRCUIT



Suggested PCB Layout
(Component Side)

- △ **MATERIALS:**
 - HOUSING - THERMOPLASTIC PET POLYESTER FLAMMABILITY RATING UL 94V-0
 - SHIELD - .010" THICK, C26800 BRASS PREPLATED WITH 30μINCH MIN SEMI-BRIGHT NICKEL, SOLDER TABS POST DIPPED WITH 100μINCH MIN SAC SOLDER.
 - MOD JACK CONTACTS - 0.0157" x 0.018" PHOSPHOR BRONZE, 50μINCH MIN OVERALL NICKEL UNDERPLATE, WITH SELECT 50μINCH MIN HARD GOLD FINISH PLATE. SOLDER TAILS WITH 100μINCH MIN MATTE TIN AND/OR SAC SOLDER DIP.
 - LIGHT EMITTING DIODE(LED) - DIFFUSED EPOXY LENS, .020" x .020" CARBON STEEL WIREFRAME LEADS PRE-PLATED WITH 80μINCH SILVER OVER 4μINCH NICKEL UNDERPLATE OVER 40μINCH COPPER UNDERPLATE, POST-PLATED WITH 100μINCH MIN MATTE TIN AND/OR SAC SOLDER DIP OR PURE TIN SOLDER DIP.
- △ RJ45 JACK CAVITY CONFORMS TO FCC RULES AND REGULATIONS PART 68, SUB PART F.
- △ **MAGNETICS:**
 - IMPEDANCE: 100 OHMS
 - TURNS RATIO (CHIP-CABLE): TX = 11, RX = 11
 - OPEN CIRCUIT INDUCTANCE (OCL): 350μH MIN @100kHz, 0.1VRMS, 8mA DC BIAS FROM 0°C TO 70°C, TX AND RX
 - POE CURRENT: 350mA DC MAX
 - PERFORMANCE @ 25°C
 - INSERTION LOSS (IL): 1.1dB MAX FROM 0.5MHz TO 100MHz
 - RETURN LOSS (RL): 18dB MIN FROM 0.5MHz TO 30MHz
 - 18-20LOG(I/F/30)dB MIN FROM 30.1MHz TO 60MHz
 - 12dB MIN FROM 60.1MHz TO 80MHz
 - CROSSTALK ATTENUATION: 35dB MIN FROM 0.5MHz TO 4.0MHz
 - 33-20*LOG(I/F/50)dB MIN FROM 4.0.1MHz TO 100MHz
 - COMMON MODE REJECTION RATIO (CMRR): 30dB MIN FROM 0.5MHz TO 100MHz
 - ISOLATION VOLTAGE: COMPLIES WITH IEEE802.3af 2003, PARA 33.4.1, ITEM a.
- △ D1-D8 - RECTIFIER DIODE
 - FORWARD VOLTAGE, Vf = 12V MAX @ If = 0.5A
 - FORWARD CURRENT, If = 0.5A MAX
 - REVERSE VOLTAGE, Vr = 80V MAX
- 5. OPERATING TEMPERATURE: FROM 0°C TO +70°C
- △ LED COMPLIANT WITH IEC60825-1 SAFETY OF LASER PRODUCTS. WHEN OPERATED UP TO 20 mA. THE 250 OHM RESISTOR IS INCLUDED IN THE LEDS.
- △ INDICATED CONNECTIONS ARE FOR NIC CONFIGURATION. THE MAGNETICS ARE SYMMETRICAL, AND ARE AUTO-MOD/MDIX CAPABLE.
- △ LED PEAK WAVELENGTH: GREEN(L) = 565nm
YELLOW(L) = 585nm
- △ TRADEMARK, PART NUMBER, DATE CODE, COUNTRY OF ORIGIN AND AGENCY APPROVAL MARKING IN APPROXIMATE LOCATION SHOWN.

| | | |
|-------|--------|-------------|
| GREEN | GREEN | 1-6605834-1 |
| GREEN | YELLOW | 6605834-1 |
| LED1 | LED2 | PART NUMBER |

| | | | | | | | |
|--|------|--------------------------|------|-------------|-----|-----|-----|
| THIS DRAWING IS A CONTROLLED DOCUMENT. | | REV | DATE | DESCRIPTION | BY | CHK | APP |
| REV | DATE | DESCRIPTION | BY | CHK | APP | | |
| AA | 22 | | | | | | |
| A | | REV PER EC: 0513-0644-04 | | | | | |