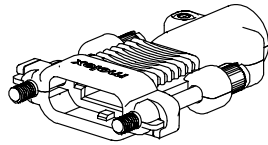
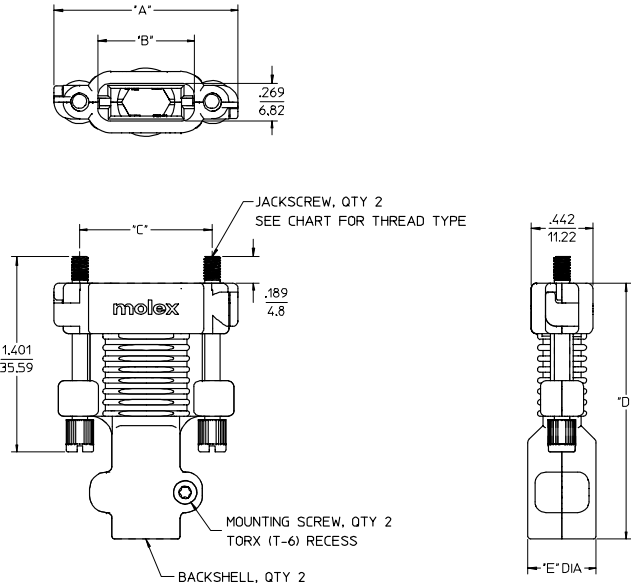


CKT SIZE	"A" DIM	"B" DIM	"C" DIM	"D" DIM	"E" DIM	CABLE OD
18	1.320/33.55	.691/17.56	.950/24.13	1.835/46.62	.490/12.45	.310/7.87
28	1.570/39.90	.941/23.91	1.200/30.48	1.835/46.62	.490/12.45	.335/8.51
38	1.820/46.25	1.191/30.26	1.450/36.83	2.270/57.65	.490/12.45	.355/9.02
48	2.070/52.60	1.441/36.61	1.700/43.18	2.478/62.93	.569/14.45	.440/11.18
72	2.670/67.84	2.041/51.85	2.300/58.42	2.741/69.62	.726/18.45	.635/16.13

NOTES:
 1. MATERIALS:
 BACKSHELL - ZINC ALLOY DIE CAST, FINISH BLACK POLYURETHANE ENAMEL.
 JACKSCREW - STEEL ALLOY, FINISH BLACK ZINC PLATING.
 MOUNTING SCREW - STEEL ALLOY, FINISH BLACK ZINC PLATING.
 2. PLUG CABLE KIT COMPONENTS TO BE BULK PACKAGED PER PK-75115-990.
 3. MOUNTING SCREW APPLICATION TORQUE TO BE MIN. 3 lbf-in AND NOT TO EXCEED 4 lbf-in.
 4. STRAIN RELIEF IS DESIGNED FOR THE CABLE DIAMETER SPECIFIED IN TABLE ON THIS PAGE.
 WHEN USING SMALLER CABLE DIAMETER, USE HEAT SHRINK TUBING TO BUILD UP THE CABLE TO SPECIFIED DIAMETER.



18 CKT PLUG CABLE KIT



75115-0072	75115-1072	72	X	CONTACT PRODUCT MARKETING
75115-0048	75115-1048	48		
75115-0038	75115-1038	38	X	CONTACT PRODUCT MARKETING
75115-0028	75115-1028	28		
75115-0018	75115-1018	18		
PLUG CABLE KIT (4-40 JACKSCREW)	PLUG CABLE KIT (M3 JACKSCREW)	CIRCUIT SIZE	NOT TOOLED	

MODIFY JACKSCREW FINISH EC NO: UCP2007-1809 DRWNSBARRA2007/02/27 CHKD:MORGAN 2007/03/05 APPR:SMILLER 2007/03/06	QUALITY SYMBOLS 0 0	GENERAL TOLERANCES (UNLESS SPECIFIED) <table border="1"> <thead> <tr> <th></th> <th>mm</th> <th>INCH</th> </tr> </thead> <tbody> <tr> <td>4 PLACES ±</td> <td>---</td> <td>---</td> </tr> <tr> <td>3 PLACES ±</td> <td>---</td> <td>±.010</td> </tr> <tr> <td>2 PLACES ±</td> <td>0.25</td> <td>---</td> </tr> <tr> <td>1 PLACE ±</td> <td>---</td> <td>---</td> </tr> </tbody> </table> ANGULAR ±1/2° DRAFT WHERE APPLICABLE MUST REMAIN WITHIN DIMENSIONS		mm	INCH	4 PLACES ±	---	---	3 PLACES ±	---	±.010	2 PLACES ±	0.25	---	1 PLACE ±	---	---	SCALE 2:1 DESIGN UNITS METRIC DIMENSION STYLE IN/MM DRAWN BY DATE TMCCLELL 02/11/05 CHECKED BY DATE TMCCLELL 02/11/07 APPROVED BY DATE BANAKIS 02/11/07	THIRD ANGLE PROJECTION REVISE ON CAD ONLY TITLE SALES DRAWING TDP PLUG CABLE KIT BLACK FINISH MOLEX INCORPORATED MATERIAL NO. SEE CHART DOCUMENT NO. SD-75115-001 SHEET NO. 1 OF 1
				mm	INCH														
4 PLACES ±	---	---																	
3 PLACES ±	---	±.010																	
2 PLACES ±	0.25	---																	
1 PLACE ±	---	---																	
THIS DRAWING CONTAINS INFORMATION THAT IS PROPRIETARY TO MOLEX INCORPORATED AND SHOULD NOT BE USED WITHOUT WRITTEN PERMISSION																			

tb_frame_c-01 rev. 01 2000/08/01