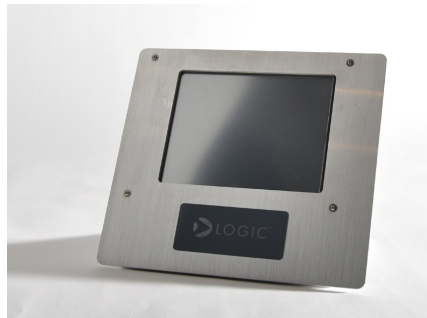


PRODUCT BRIEF:

Logic product solutions

ZOOM™ DISPLAY KITS Development Tool

The Zoom™ Display Kits are ready-to-use liquid crystal displays (LCDs) that can be immediately connected to Zoom™ Development Kits. The 3.6" and 6.4" Display Kits include bezel, backlight, 4-wire resistive touch panel, and ribbon cable. The 4.3" Display Kit includes 4-wire resistive touch panel and an LCD connector built into the PCB.



ZOOM™ 6.4" VGA DISPLAY KIT

ZOOM™ DISPLAY KITS :: NOTES:

- + Please verify the selected processor supports the Display Kit. Visit Logic's website for details.
- + RoHS compliant

LOGIC WEBSITE :: DESIGN RESOURCES:

- + Logic Products : www.logicpd.com/products
- + Logic Technical Support : www.logicpd.com/product-support
- + For more information contact Logic Sales : product.sales@logicpd.com

Model Number	Sharp LCD PN	Display Size	Display Format	LCD Interface	Key Features
LCD-3.6-QVGA-10R	LQ036Q1DA01	3.6"	QVGA 320x240	TFT	Color, transmissive w/HRTFT ASIC
LCD-4.3-WQVGA-10R	LQ043T1DG01	4.3"	WQVGA 480x272	TFT	Widescreen, color, transmissive
LCD-6.4-VGA-10R	LQ64D343	6.4"	VGA 640x480	TFT	Color, transmissive



LOGIC

411 N. Washington Ave. Suite 400
Minneapolis, MN 55401

T : 612.672.9495 F : 612.672.9489 I : www.logicpd.com

© 2009 Logic Product Development Company. All rights reserved.

PN: 70000026 Rev N