

MICRO SWITCH
a Honeywell Division

FED. MFG. CODE 91929

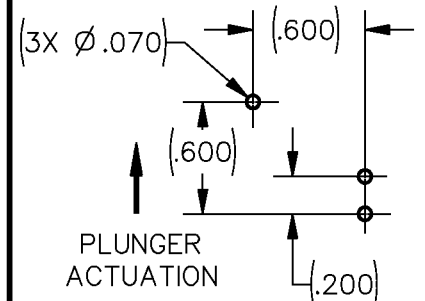
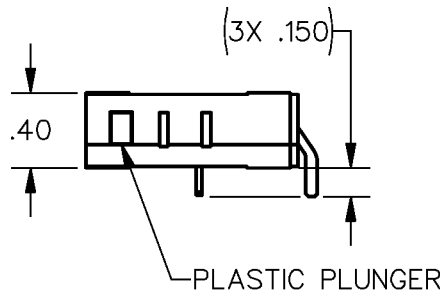
SWITCH - BASIC

CATALOG LISTING

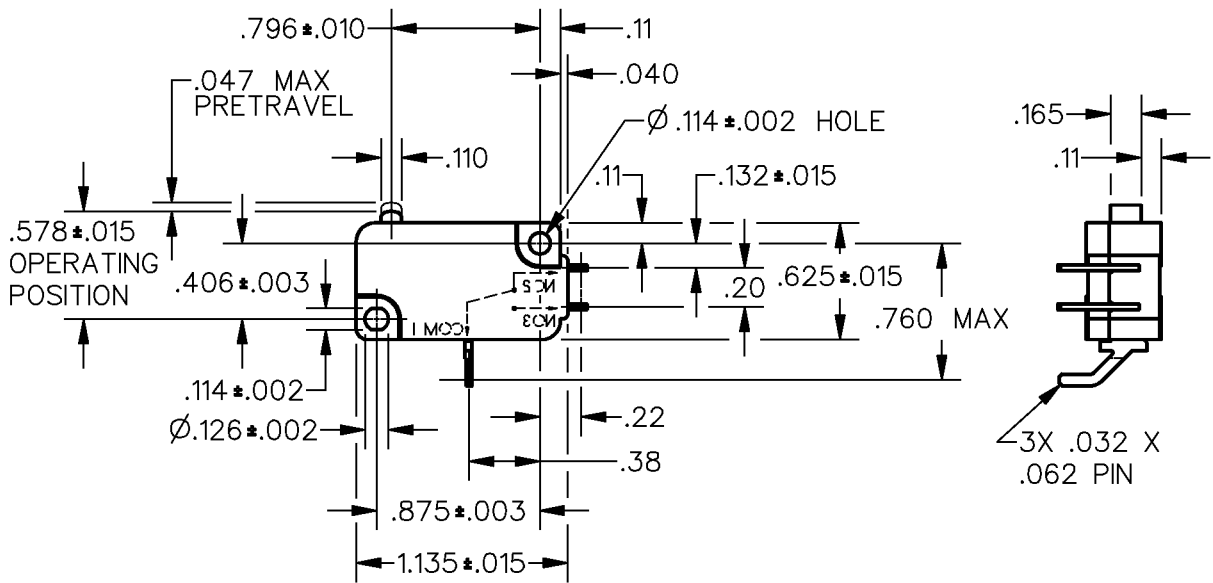
V7-1E17P02

CW-B5992

CATALOG LISTING
V7-1E17P02
PAGE 1 OF 1
REPLACES
RELEASE NO. PR-21988
ISSUE
2



TERMINATION PATTERN



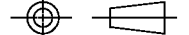
NOTES

- 1 - TERMINATION MAY REQUIRE STUFFING INTO BOARD
- 2 - TERMINALS SILVER PLATED

ANSI Y14.5M-1982 APPLIES

THIS DRAWING COVERS A PROPRIETARY ITEM AND IS THE PROPERTY OF MICRO SWITCH, A DIVISION OF HONEYWELL. THIS DRAWING IS NOT TO BE COPIED OR USED WITHOUT THE APPROVAL OF MICRO SWITCH.

THIRD ANGLE PROJECTION



CHARACTERISTICS	ELECTRICAL DATA	SCALE FULL	DO NOT SCALE PRINT
OPERATING FORCE --- 150 GRAMS MAX	CONTACT ARRANGEMENT S P D T	UNLESS OTHERWISE SPECIFIED TOLERANCES ARE	
RELEASE FORCE --- 25 GRAMS MIN		ONE PLACE (.0) ± .030	
DIFFERENTIAL TRAVEL --- .002-.010	L216 10A 1/3HP 125, 250 OR 277 VAC 1/2A 125 VDC 1/4A 250 VDC; 4A 125 VAC "L"	TWO PLACE (.00) ± .015	
OVERTRAVEL --- .050 MIN		THREE PLACE (.000) ± .005	
FREE POSITION --- .625 MAX		ANGLES ±	
RELEASE TRAVEL --- .007 MIN		WEIGHT	



REVISIONS
A REL PR21988
DCS
5 JAN 96

DDM/CAD
DRAWN
16 NOV 95
DCS