

# MICRO SWITCH

A DIVISION OF MINNEAPOLIS-HONEYWELL REGULATOR COMPANY  
 FREEPORT, ILLINOIS  
 FED. MFR. CODE 91929

## SWITCH—BASIC

CATALOG LISTING  
**ISE3-12**

(M) ISE3-12  
 ISSUE 5

ISE3-12

PAGE 1 OF 1

M

DRAWING NUMBER

ISSUE 10

REPLACES

RELEASE NO.

CHECK

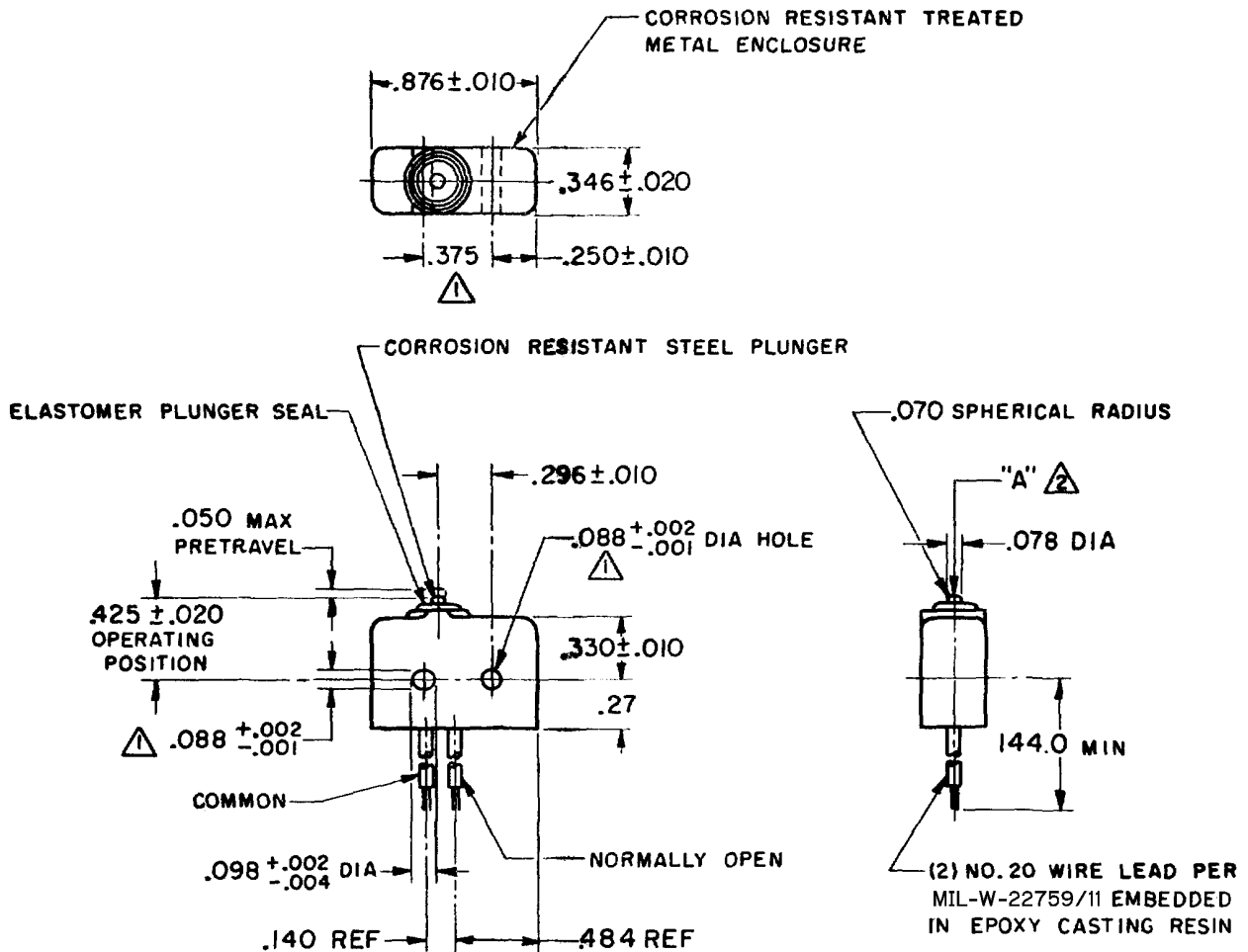
CHECK

DRAWN

R G C 2 MARCH 1962 CHECK

**REVISIONS**

A	CO16449
R G C	
2 MARCH 62	
B	CO-34213
J A L	
24 SEPT 74	
C	CO 51463-G
WJM	
27 JUL 83	
D	CO57041A
C J H	
21 MAR 85	
E	CO94274
DLM	
MAR 99	



**NOTE -**

- $\triangle$  MOUNTING HOLES WILL ACCEPT  $.087$  MAX DIA PINS OR SCREWS ON  $.375 \pm .002$  CENTERS
- $\triangle$  ACTUATION IN LINE WITH ARROW "A" IS RECOMMENDED
- $\triangle$  WEIGHT OF SWITCH ONLY IS  $.26$  OZ MAX.  
 WEIGHT OF SWITCH WITH WIRE LEADS IS  $3.20$  OZ MAX

THIS DRAWING COVERS A PROPRIETARY ITEM AND IS THE PROPERTY OF MICRO SWITCH, A DIVISION OF MINNEAPOLIS-HONEYWELL REGULATOR CO. THIS DRAWING IS NOT TO BE COPIED OR USED WITHOUT THE APPROVAL OF MICRO SWITCH.

CHARACTERISTICS	ELECTRICAL DATA	SCALE FULL
OPERATING FORCE — — — — — 5 — 17 OZ	CONTACT ARRANGEMENT S P N O	DO NOT SCALE PRINT
RELEASE FORCE — — — — — 4 OZ MIN	250 VAC — — — — — 5 AMP	UNLESS OTHERWISE SPECIFIED DIMENSIONS ARE IN INCHES <b>TOLERANCES ARE:</b> ONE PLACE (.0) $\pm .030$ TWO PLACE (.00) $\pm .018$ THREE PLACE (.000) $\pm .008$ ANGLES $\pm$
RELEASE TRAVEL — — — — — .004 MIN	30 VOLTS DC RATING	
DIFFERENTIAL TRAVEL — — — — — .004 MAX	INDUCTIVE — — — — — SEA LEVEL — — — — — 3 AMP	
OVERTRAVEL — — — — — .003 MIN.	INDUCTIVE — — — — — 50,000 FT — — — — — 2.5 AMP	
	RESISTIVE — — — — — SEA LEVEL — — — — — 5 AMP	
	RESISTIVE — — — — — 50,000 FT — — — — — 5 AMP	
	MAXIMUM INRUSH — — — — — 24 AMP	WEIGHT $\triangle$ 3

FORMTEK

O-80378