

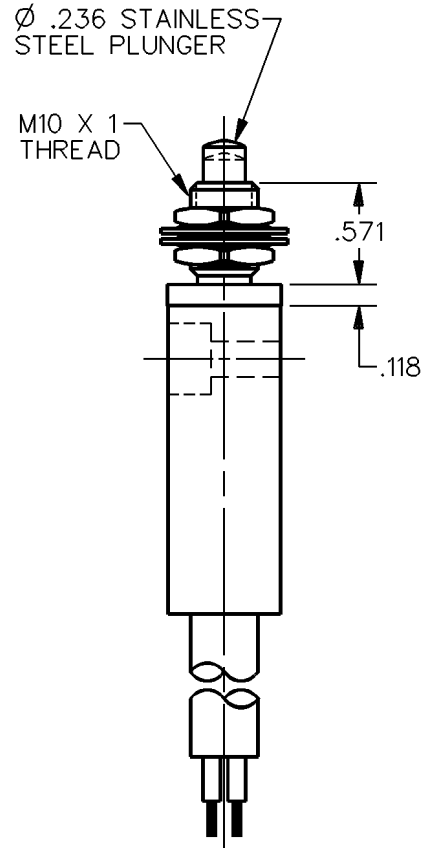
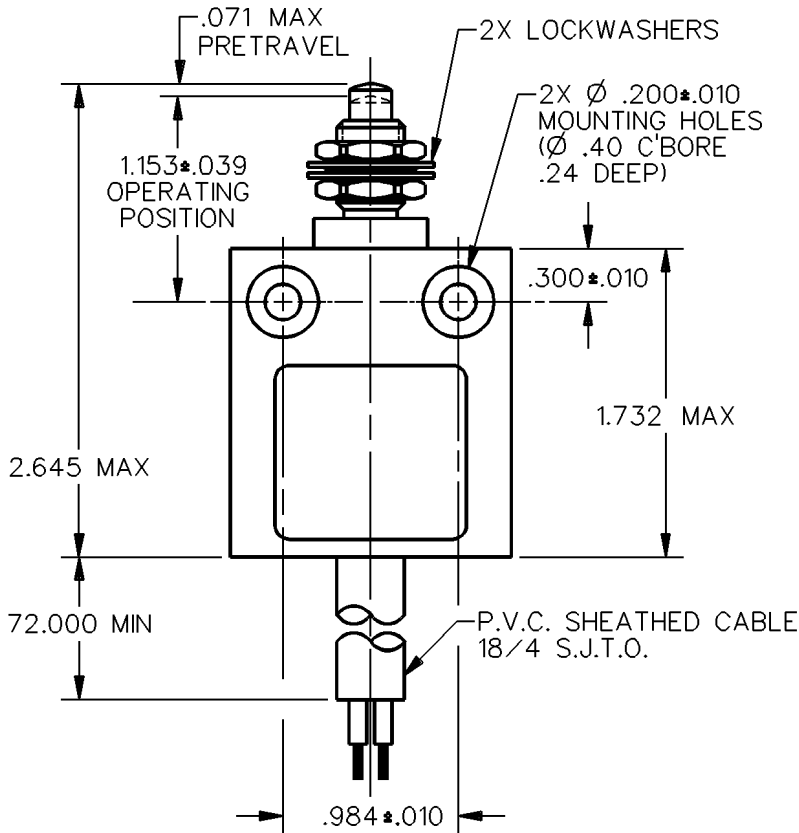
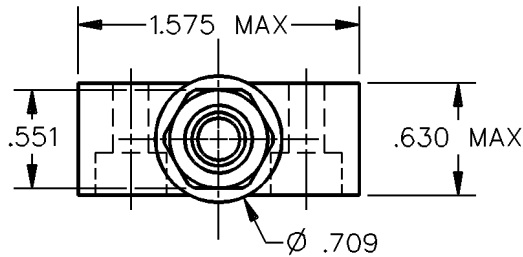
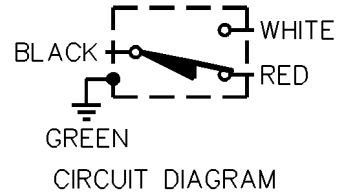
MICRO SWITCH
a Honeywell Division

FED. MFG. CODE 91929

MINIATURE PRECISION
LIMIT SWITCH

CATALOG LISTING

914CE27-6



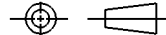
NOTES



- 1 - ZINC HOUSING FINISHED WITH GRAY PAINT
- 2 - SWITCH MOUNTS THRU A Ø.413 HOLE
- 3 - .165 MAX PANEL THICKNESS

ANSI Y14.5M-1982 APPLIES

THIS DRAWING COVERS A PROPRIETARY ITEM AND IS THE PROPERTY OF MICRO SWITCH, A DIVISION OF HONEYWELL. THIS DRAWING IS NOT TO BE COPIED OR USED WITHOUT THE APPROVAL OF MICRO SWITCH.

THIRD ANGLE PROJECTION



CHARACTERISTICS	ELECTRICAL DATA	SCALE	FULL	DO NOT SCALE PRINT
		OPERATING FORCE 2 LBS 10 1/2 OZ MAX	CONTACT ARRANGEMENT S P D T	UNLESS OTHERWISE SPECIFIED TOLERANCES ARE
RELEASE FORCE ----- 1 LB MIN	ONE PLACE (.0)			± .030
DIFFERENTIAL TRAVEL ----- .004 MAX	5A - 250 VAC 1/10HP - 125 OR 250 VAC	TWO PLACE (.00)		± .015
OVERTRAVEL ----- .118 MIN		THREE PLACE (.000)		± .005
	 	ANGLES		±
		WEIGHT		

914CE27-6

M

DRAWING NUMBER

ISSUE 3

REVISIONS

A CO-69061
S A V
4 OCT 91

REPLACES

RELEASE NO. PR-7324

CHECK

CHECK

DDM/CAD

DRAWN

CHECK

S A V 4 OCT 91