

16A – 3150A



ENF321-3PBJ



ENF63X-3PB6

3 Pole, 600V, 16A – 100A — Selector handle

UL general purpose amp rating	NEMA Enclosure type			
	1	3R	4 ^① Selector handles are only NEMA rated 1, 3R, 12	4X Stainless ^① Selector handles are only NEMA rated 1, 3R, 12
	Catalog number	Catalog number	Catalog number	Catalog number
16	ENF161-3PBJ	ENF163-3PBJ	ENF164-3PBJ	ENF16X-3PBJ
25	ENF251-3PBJ	ENF253-3PBJ	ENF254-3PBJ	ENF25X-3PBJ
40	ENF321-3PBJ	ENF323-3PBJ	ENF324-3PBJ	ENF32X-3PBJ
60	ENF451-3PBJ	ENF453-3PBJ	ENF454-3PBJ	ENF45X-3PBJ
80	ENF631-3PBJ	ENF633-3PBJ	ENF634-3PBJ	ENF63X-3PBJ

3 Pole, 600V, 16A – 3150A — Pistol handle

UL general purpose amp rating	NEMA Enclosure type				
	1	3R	4	4X Stainless	
	Catalog number	Catalog number	Catalog number	Catalog number	
UL 508	16	ENF161-3PB6	ENF163-3PB6	ENF164-3PB6	ENF16X-3PB6
	25	ENF251-3PB6	ENF253-3PB6	ENF254-3PB6	ENF25X-3PB6
	40	ENF321-3PB6	ENF323-3PB6	ENF324-3PB6	ENF32X-3PB6
	60	ENF451-3PB6	ENF453-3PB6	ENF454-3PB6	ENF45X-3PB6
	80	ENF631-3PB6	ENF633-3PB6	ENF634-3PB6	ENF63X-3PB6
UL 98	30	ENF301-3PB6	ENF303-3PB6	ENF304-3PB6	ENF30X-3PB6
	60	ENF601-3PB6	ENF603-3PB6	ENF604-3PB6	ENF60X-3PB6
	100	ENF1001-3PB6	ENF1003-3PB6	ENF1004-3PB6	ENF100X-3PB6
	125	ENF1251-3PB6	ENF1253-3PB6	ENF1254-3PB6	ENF125X-3PB6
	200	ENF2001-3PB8	ENF2003-3PB8	ENF2004-3PB8	ENF200X-3PB8
	400	ENF4001-3PB4	ENF4003-3PB4	ENF4004-3PB4	ENF400X-3PB4
	600	ENF6001-3PB4	ENF6003-3PB4	ENF6004-3PB4	ENF600X-3PB4
	800	ENF8001-3PB4	ENF8003-3PB4	ENF8004-3PB4	ENF800X-3PB4
	1200	ENF12001-3PB4	ENF12003-3PB4	ENF12004-3PB4	ENF1200X-3PB4
	1600	ENF16001-3P8	ENF16003-3P8	ENF16004-3P8	ENF1600X-3P8
	2000	ENF20001-3P8	ENF20003-3P8	ENF20004-3P8	ENF2000X-3P8
3150 ^②	ENF31501-3P8	ENF31503-3P8	ENF31504-3P8	ENF3150X-3P8	

① Enclosures are rated as listed, selector handles are only NEMA rated 1, 3R, 12. The overall NEMA rating of an enclosed switch with a selector handle is 1, 3R, 12.
 ② IEC rated only.

Fusible

Non-Fused

Enclosed Fused

Enclosed Non-Fused

16A – 3150A



ENF25P-3PY6



ENF252-3PYJ



ENF16E-3PBJ



ENF16E-3PBJ B

3 Pole, 600V, 16A – 100A — Selector handle

UL general purpose amp rating	NEMA Enclosure type			IEC Enclosure type
	4X Plastic ^① Selector handles are only NEMA rated 1, 3R, 12	12	7 & 9	IP65 Plastic
	Catalog number	Catalog number	Catalog number	Catalog number
16	ENF16P-3PBJ	ENF162-3PBJ	—	ENF16E-3PBJ
25	ENF25P-3PBJ	ENF252-3PBJ	—	ENF25E-3PBJ
40	ENF32P-3PBJ	ENF322-3PBJ	—	ENF32E-3PBJ
60	ENF45P-3PBJ	ENF452-3PBJ	—	ENF45E-3PBJ
80	ENF63P-3PBJ	ENF632-3PBJ	—	ENF63E-3PBJ

3 Pole, 600V, 16A – 3150A — Pistol handle

UL general purpose amp rating	NEMA Enclosure type			IEC Enclosure type
	4X Plastic	12	7 & 9	IP65 Plastic
	Catalog number	Catalog number	Catalog number	Catalog number
16	ENF16P-3PB6	ENF162-3PB6	ENF167-3P	ENF16E-3PB4
25	ENF25P-3PB6	ENF252-3PB6	ENF257-3P	ENF25E-3PB4
40	ENF32P-3PB6	ENF322-3PB6	ENF327-3P	ENF32E-3PB4
60	ENF45P-3PB6	ENF452-3PB6	ENF457-3P	ENF45E-3PB4
80	ENF63P-3PB6	ENF632-3PB6	ENF637-3P	ENF63E-3PB4
30	ENF30P-3PB6	ENF302-3PB6	ENF307-3P	ENF30E-3PB6
60	ENF60P-3PB6	ENF602-3PB6	ENF607-3P	ENF60E-3PB6
100	ENF100P-3PB6	ENF1002-3PB6	ENF1007-3P	ENF100E-3PB6
125	ENF125P-3PB6	ENF1252-3PB6	ENF1257-3P	ENF125E-3PB6
200	ENF200P-3PB8	ENF2002-3PB8	ENF2007-3P	—
400	ENF400P-3PB4	ENF4002-3PB4	ENF4007-3P	—
600	ENF600P-3PB4	ENF6002-3PB4	ENF6007-3P	—
800	ENF800P-3PB4	ENF8002-3PB4	ENF8007-3P	—
1200	ENF1200P-3PB4	ENF12002-3PB4	ENF12007-3P	—
1600	ENF1600P-3P8	ENF16002-3P8	ENF16007-3P	—
2000	ENF2000P-3P8	ENF20002-3P8	ENF20007-3	—
3150 ^②	ENF3150P-3P8	ENF31502-3P8	ENF31507-3P	—

NOTE: All enclosed switches are provided with a black handle; however, most handles can be substituted with a red and yellow handle if desired. Please substitute the handle suffix code (2nd and 3rd from last characters) with the red/yellow handle catalog number suffix from page 3.12. There is no additional price adder for changing to a red/yellow handle of equal ratings and style.

EXAMPLE: A red/yellow selector handle for an NF161-3PBJA can be substituted for the black selector handle by using the "YJ" suffix instead of the "BJ" suffix, new catalog #NF161-3PYJA.

① Enclosures are rated as listed, selector handles are only NEMA rated 1, 3R, 12. The overall NEMA rating of an enclosed switch with a selector handle is 1, 3R, 12.

② IEC rated only.

16A – 400A

Other Configurations

UL General purpose amp rating	Type of switch	NEMA Enclosure type			
		1	3R	4	4X Stainless
		Catalog number	Catalog number	Catalog number	Catalog number
16	4 Pole 6 Pole Transfer Bypass Mech. interlock	ENF161-4PB6	ENF163-4PB6	ENF164-4PB6	ENF16X-4PB6
		ENF161-6PB6	ENF163-6PB6	ENF164-6PB6	ENF16X-6PB6
		ENF161-3TB8	ENF163-3TB8	ENF164-3TB8	ENF16X-3TB8
		ENF161-3BB8	ENF163-3BB8	ENF164-3BB8	ENF16X-3BB8
		ENF161-3MB6	ENF163-3MB6	ENF164-3MB6	ENF16X-3MB6
25	4 Pole 6 Pole Transfer Bypass Mech. interlock	ENF251-4PB6	ENF253-4PB6	ENF254-4PB6	ENF25X-4PB6
		ENF251-6PB6	ENF253-6PB6	ENF254-6PB6	ENF25X-6PB6
		ENF251-3TB8	ENF253-3TB8	ENF254-3TB8	ENF25X-3TB8
		ENF251-3BB8	ENF253-3BB8	ENF254-3BB8	ENF25X-3BB8
		ENF251-3MB6	ENF253-3MB6	ENF254-3MB6	ENF25X-3MB6
40	4 Pole 6 Pole Transfer Bypass Mech. interlock	ENF321-4PB6	ENF323-4PB6	ENF324-4PB6	ENF32X-4PB6
		ENF321-6PB6	ENF323-6PB6	ENF324-6PB6	ENF32X-6PB6
		ENF321-3TB8	ENF323-3TB8	ENF324-3TB8	ENF32X-3TB8
		ENF321-3BB8	ENF323-3BB8	ENF324-3BB8	ENF32X-3BB8
		ENF321-3MB6	ENF323-3MB6	ENF324-3MB6	ENF32X-3MB6
60	4 Pole 6 Pole Transfer Bypass Mech. interlock	ENF451-4PB6	ENF453-4PB6	ENF454-4PB6	ENF45X-4PB6
		ENF451-6PB6	ENF453-6PB6	ENF454-6PB6	ENF45X-6PB6
		ENF451-3TB8	ENF453-3TB8	ENF454-3TB8	ENF45X-3TB8
		ENF451-3BB8	ENF453-3BB8	ENF454-3BB8	ENF45X-3BB8
		ENF451-3MB6	ENF453-3MB6	ENF454-3MB6	ENF45X-3MB6
80	4 Pole 6 Pole Transfer Bypass Mech. interlock	ENF631-4PB6	ENF633-4PB6	ENF634-4PB6	ENF63X-4PB6
		ENF631-6PB6	ENF633-6PB6	ENF634-6PB6	ENF63X-6PB6
		ENF631-3TB8	ENF633-3TB8	ENF634-3TB8	ENF63X-3TB8
		ENF631-3BB8	ENF633-3BB8	ENF634-3BB8	ENF63X-3BB8
		ENF631-3MB6	ENF633-3MB6	ENF634-3MB6	ENF63X-3MB6
30	4 Pole 6 Pole Transfer Bypass Mech. interlock	ENF301-4PB6	ENF303-4PB6	ENF304-4PB6	ENF30X-4PB6
		ENF301-6PB6	ENF303-6PB6	ENF304-6PB6	ENF30X-6PB6
		ENF301-3TB8	ENF303-3TB8	ENF304-3TB8	ENF30X-3TB8
		ENF301-3BB8	ENF303-3BB8	ENF304-3BB8	ENF30X-3BB8
		ENF301-3MB6	ENF303-3MB6	ENF304-3MB6	ENF30X-3MB6
60	4 Pole 6 Pole Transfer Bypass Mech. interlock	ENF601-4PB6	ENF603-4PB6	ENF604-4PB6	ENF60X-4PB6
		ENF601-6PB6	ENF603-6PB6	ENF604-6PB6	ENF60X-6PB6
		ENF601-3TB8	ENF603-3TB8	ENF604-3TB8	ENF60X-3TB8
		ENF601-3BB8	ENF603-3BB8	ENF604-3BB8	ENF60X-3BB8
		ENF601-3MB6	ENF603-3MB6	ENF604-3MB6	ENF60X-3MB6
100	4 Pole 6 Pole Transfer Bypass Mech. interlock	ENF1001-4PB6	ENF1003-4PB6	ENF1004-4PB6	ENF100X-4PB6
		ENF1001-6PB6	ENF1003-6PB6	ENF1004-6PB6	ENF100X-6PB6
		ENF1001-3TB8	ENF1003-3TB8	ENF1004-3TB8	ENF100X-3TB8
		ENF1001-3BB8	ENF1003-3BB8	ENF1004-3BB8	ENF100X-3BB8
		ENF1001-3MB6	ENF1003-3MB6	ENF1004-3MB6	ENF100X-3MB6
125	2 Pole 4 Pole 6 Pole Transfer Bypass Mech. interlock	ENF1251-2PB6	ENF1253-2PB6	ENF1254-2PB6	ENF125X-2PB6
		ENF1251-4PB6	ENF1253-4PB6	ENF1254-4PB6	ENF125X-4PB6
		ENF1251-6PB2	ENF1253-6PB2	ENF1254-6PB4	ENF125X-6PB4
		ENF1251-3TB8	ENF1253-3TB8	ENF1254-3TB8	ENF125X-3TB8
		—	—	—	—
ENF1251-3MB6	ENF1253-3MB6	ENF1254-3MB8	ENF125X-3MB8		
200	2 Pole 4 Pole 6 Pole Transfer Bypass Mech. interlock	ENF2001-2PB8	ENF2003-2PB8	ENF2004-2PB8	ENF200X-2PB8
		ENF2001-4PB8	ENF2003-4PB8	ENF2004-4PB8	ENF200X-4PB8
		ENF2001-6PB4	ENF2003-6PB4	ENF2004-6PB4	ENF200X-6PB4
		ENF2001-3TB4	ENF2003-3TB4	ENF2004-3TB4	ENF200X-3TB4
		ENF2001-3BB4	ENF2003-3BB4	ENF2004-3BB4	ENF200X-3BB4
ENF2001-3MB8	ENF2003-3MB8	ENF2004-3MB8	ENF200X-3MB8		
400	2 Pole 4 Pole 6 Pole Transfer Bypass Mech. interlock	ENF4001-2PB4	ENF4003-2PB4	ENF4004-2PB4	ENF400X-2PB4
		ENF4001-4PB4	ENF4003-4PB4	ENF4004-4PB4	ENF400X-4PB4
		ENF4001-6P8	ENF4003-6P8	ENF4004-6P8	ENF400X-6P8
		ENF4001-3TB4	ENF4003-3TB4	ENF4004-3TB4	ENF400X-3TB4
		ENF4001-3B6	ENF4003-3B6	ENF4004-3B6	ENF400X-3B6
ENF4001-3MB4	ENF4003-3MB4	ENF4004-3MB4	ENF400X-3MB4		

Fusible

Non-Fused

Enclosed Fused

Enclosed Non-Fused

16A – 400A Other Configurations

UL General purpose amp rating	Type of switch	NEMA Enclosure type			IEC Enclosure type
		4X Plastic	12	7 & 9	IP65
		Catalog number	Catalog number	Catalog number	Catalog number
16	4 pole	ENF16P-4PB6	ENF162-4PB6	ENF167-4P	ENF16E-4PBJ
	6 pole	ENF16P-6PB6	ENF162-6PB6	ENF167-6P	ENF16E-6PBJ
	Transfer	ENF16P-3TB8	ENF162-3TB8	ENF167-3T	—
	Bypass	ENF16P-3BB8	ENF162-3BB8	ENF167-3B	—
	Mech. interlock	ENF16P-3MB6	ENF162-3MB6	—	—
25	4 pole	ENF25P-4PB6	ENF252-4PB6	ENF257-4P	ENF25E-4PBJ
	6 pole	ENF25P-6PB6	ENF252-6PB6	ENF257-6P	ENF25E-6PBJ
	Transfer	ENF25P-3TB8	ENF252-3TB8	ENF257-3T	—
	Bypass	ENF25P-3BB8	ENF252-3BB8	ENF257-3B	—
	Mech. interlock	ENF25P-3MB6	ENF252-3MB6	—	—
40	4 Pole	ENF32P-4PB6	ENF322-4PB6	ENF327-4P	ENF32E-4PBJ
	6 Pole	ENF32P-6PB6	ENF322-6PB6	ENF327-6P	ENF32E-6PBJ
	Transfer	ENF32P-3TB8	ENF322-3TB8	ENF327-3T	—
	Bypass	ENF32P-3BB8	ENF322-3BB8	ENF327-3B	—
	Mech. interlock	ENF32P-3MB6	ENF322-3MB6	—	—
60	4 Pole	ENF45P-4PB6	ENF452-4PB6	ENF457-4P	ENF45E-4PBJ
	6 Pole	ENF45P-6PB6	ENF452-6PB6	ENF457-6P	ENF45E-6PBJ
	Transfer	ENF45P-3TB8	ENF452-3TB8	ENF457-3T	—
	Bypass	ENF45P-3BB8	ENF452-3BB8	ENF457-3B	—
	Mech. interlock	ENF45P-3MB6	ENF452-3MB6	—	—
80	4 Pole	ENF63P-4PB6	ENF632-4PB6	ENF637-4P	ENF63E-4PBJ
	6 Pole	ENF63P-6PB6	ENF632-6PB6	ENF637-6P	ENF63E-6PBJ
	Transfer	ENF63P-3TB8	ENF632-3TB8	ENF637-3T	—
	Bypass	ENF63P-3BB8	ENF632-3BB8	ENF637-3B	—
	Mech. interlock	ENF63P-3MB6	ENF632-3MB6	—	—
30	4 Pole	ENF30P-4PB6	ENF302-4PB6	ENF307-4P	ENF30E-4PB4
	6 Pole	ENF30P-6PB6	ENF302-6PB6	ENF307-6P	ENF30E-6PB6
	Transfer	ENF30P-3TB8	ENF302-3TB8	ENF307-3T	—
	Bypass	ENF30P-3BB8	ENF302-3BB8	ENF307-3B	—
	Mech. interlock	ENF30P-3MB6	ENF302-3MB6	—	—
60	4 Pole	ENF60P-4PB6	ENF602-4PB6	ENF607-4P	ENF60E-4PB4
	6 Pole	ENF60P-6PB6	ENF602-6PB6	ENF607-6P	ENF60E-6PB6
	Transfer	ENF60P-3TB8	ENF602-3TB8	ENF607-3T	—
	Bypass	ENF60P-3BB8	ENF602-3BB8	ENF607-3B	—
	Mech. interlock	ENF60P-3MB6	ENF602-3MB6	—	—
100	4 Pole	ENF100P-4PB6	ENF1002-4PB6	ENF1007-4P	ENF100E-4PB4
	6 Pole	ENF100P-6PB6	ENF1002-6PB6	ENF1007-6P	ENF100E-6PB6
	Transfer	ENF100P-3TB8	ENF1002-3TB8	ENF1007-3T	—
	Bypass	ENF100P-3BB8	ENF1002-3BB8	ENF1007-3B	—
	Mech. interlock	ENF100P-3MB6	ENF1002-3MB6	—	—
125	2 Pole	ENF125P-2PB6	ENF1252-2PB6	ENF1257-2P	—
	4 Pole	ENF125P-4PB6	ENF1252-4PB6	ENF1257-4P	—
	6 Pole	ENF125P-6PB2	ENF1252-6PB2	ENF1257-6P	—
	Transfer	ENF125P-3TB8	ENF1252-3TB8	ENF1257-3T	—
	Mech. interlock	—	—	—	—
200	2 Pole	ENF200P-2PB8	ENF2002-2PB8	ENF2007-2P	—
	4 Pole	ENF200P-4PB8	ENF2002-4PB8	ENF2007-4P	—
	6 Pole	ENF200P-6PB4	ENF2002-6PB4	ENF2007-6P	—
	Transfer	ENF200P-3TB4	ENF2002-3TB4	ENF2007-3T	—
	Mech. interlock	ENF200P-3BB8	ENF2002-3BB8	ENF2007-3B	—
400	2 Pole	ENF400P-2PB4	ENF4002-2PB4	ENF4007-2P	—
	4 Pole	ENF400P-4PB4	ENF4002-4PB4	ENF4007-4P	—
	6 Pole	ENF400P-6P8	ENF4002-6P8	ENF4007-6P	—
	Transfer	ENF400P-3TB4	ENF4002-3TB4	ENF4007-3T	—
	Mech. interlock	ENF400P-3B6	ENF4002-3B6	ENF4007-3B	—
		ENF400P-3MB4	ENF4002-3MB4	—	—

600A - 3150A Other Configurations

UL General purpose amp rating	Type of switch	NEMA Enclosure type			
		1	3R	4	4X Stainless
		Catalog number	Catalog number	Catalog number	Catalog number
600	2 Pole	ENF6001-2PB4	ENF6003-2PB4	ENF6004-2PB4	ENF600X-2PB4
	4 Pole	ENF6001-4PB4	ENF6003-4PB4	ENF6004-4PB4	ENF600X-4PB4
	6 Pole	ENF6001-6P8	ENF6003-6P8	ENF6004-6P8	ENF600X-6P8
	Transfer	ENF6001-3TB4	ENF6003-3TB4	ENF6004-3TB4	ENF600X-3TB4
	Bypass	ENF6001-3B6	ENF6003-3B6	ENF6004-3B6	ENF600X-3B6
	Mech. interlock	ENF6001-3MB4	ENF6003-3MB4	ENF6004-3MB4	ENF600X-3MB4
	800	2 Pole	ENF8001-2PB4	ENF8003-2PB4	ENF8004-2PB4
4 Pole		ENF8001-4PB4	ENF8003-4PB4	ENF8004-4PB4	ENF800X-4PB4
6 Pole		ENF8001-6P8	ENF8003-6P8	ENF8004-6P8	ENF800X-6P8
ransfer		ENF8001-3TB4	ENF8003-3TB4	ENF8004-3TB4	ENF800X-3TB4
Bypass		ENF8001-3B6	ENF8003-3B6	ENF8004-3B6	ENF800X-3B6
Mech. interlock		ENF8001-3MB4	ENF8003-3MB4	ENF8004-3MB4	ENF800X-3MB4
1200		2 Pole	ENF12001-2PB4	ENF12003-2PB4	ENF12004-2PB4
	4 Pole	ENF12001-4PB4	ENF12003-4PB4	ENF12004-4PB4	ENF1200X-4PB4
	6 Pole	ENF12001-6P8	ENF12003-6P8	ENF12004-6P8	ENF12001-6P8
	Transfer	ENF12001-3TB4	ENF12003-3TB4	ENF12004-3TB4	ENF1200X-3TB4
	Bypass	ENF12001-3B6	ENF12003-3B6	ENF12004-3B6	ENF1200X-3B6
	Mech. interlock	ENF12001-3MB4	ENF12003-3MB4	ENF12004-3MB4	ENF1200X-3MB4
	1600	2 Pole	ENF16001-2P8	ENF16003-2P8	ENF16004-2P8
4 Pole		ENF16001-4P8	ENF16003-4P8	ENF16004-4P8	ENF1600X-4P8
6 Pole		—	—	—	—
Transfer		—	—	—	—
Bypass		—	—	—	—
Mech. interlock		—	—	—	—
2000		2 Pole	ENF20001-2P8	ENF20003-2P8	ENF20004-2P8
	4 Pole	ENF20001-4P8	ENF20003-4P8	ENF20004-4P8	ENF2000X-4P8
	6 Pole	—	—	—	—
	Transfer	—	—	—	—
	Bypass	—	—	—	—
	Mech. interlock	—	—	—	—
	3150	2 Pole	ENF31501-2P8	ENF31503-2P8	ENF31504-2P8
4 Pole		ENF31501-4P8	ENF31503-4P8	ENF31504-4P8	ENF3150X-4P8
6 Pole		—	—	—	—
Transfer		—	—	—	—
Bypass		—	—	—	—
Mech. interlock		—	—	—	—

Fusible

Non-Fused

Enclosed Fused

Enclosed Non-Fused

① IEC rated only.

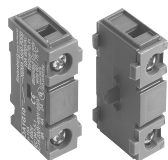
600A – 3150A Other Configurations

UL General purpose amp rating	Type of switch	NEMA Enclosure type		
		4X Plastic	12	7 & 9
		Catalog number	Catalog number	Catalog number
600	2 pole	ENF600P-2PB4	ENF6002-2PB4	ENF6007-2P
	4 pole	ENF600P-4PB4	ENF6002-4PB4	ENF6007-4P
	6 pole	ENF600P-6P8	ENF6002-6P8	ENF6007-6P
	Transfer	ENF600P-3TB4	ENF6002-3TB4	ENF6007-3T
	Bypass	ENF600P-3B6	ENF6002-3B6	ENF6007-3B
	Mech. interlock	ENF600P-3MB4	ENF6002-3MB4	—
800	2 pole	ENF800P-2PB4	ENF8002-2PB4	ENF8007-2P
	4 pole ^①	ENF800P-4PB4	ENF8002-4PB4	ENF8007-4P
	6 pole	ENF800P-6P8	ENF8002-6P8	ENF8007-6P
	Transfer	ENF800P-3TB4	ENF8002-3TB4	ENF8007-3T
	Bypass	ENF800P-3B6	ENF8002-3B6	ENF8007-3B
	Mech. interlock	ENF800P-3MB4	ENF8002-3MB4	—
1200	2 pole	ENF1200P-2PB4	ENF12002-2PB4	ENF12007-2P
	4 pole ^①	ENF1200P-4PB4	ENF12002-4PB4	ENF12007-4P
	6 pole	ENF1200P-6P8	ENF12002-6P8	ENF12007-6P
	Transfer	ENF1200P-3TB4	ENF12002-3TB4	ENF12007-3T
	Bypass	ENF1200P-3B6	ENF12002-3B6	ENF12007-3B
	Mech. interlock	ENF1200P-3MB4	ENF12002-3MB4	—
1600	2 pole	ENF1600P-2P8	ENF16002-2P8	②
	4 pole ^①	ENF1600P-4P8	ENF16002-4P8	②
2000	2 pole	ENF2000P-2P8	ENF20002-2P8	②
	4 pole ^①	ENF2000P-4P8	ENF20002-4P8	②
3150 ^②	2 pole ^①	ENF3150P-2P8	ENF31502-2P8	②
	4 pole ^①	ENF3150P-4P8	ENF31502-4P8	②

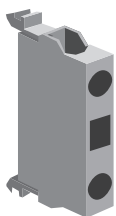
① IEC rated only.

② Consult factory for price and availability.

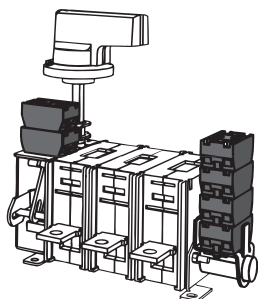
for Enclosed Non-Fusible Disconnect Switches



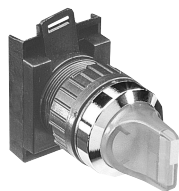
CDAUX_ _



CDAUXCA_ _



BDAUX_ _



3 Position selector switch



Pilot light

Auxiliary contacts

For use on:	Contact configuration	Catalog number	Installation suffix
16A – 100A	1 N.O.	CDAUX10	add "10" suffix
	1 N.C.	CDAUX01	add "01" suffix
125A	1 N.O.	CDAUXCA10	add "10" suffix
	1 N.C.	CDAUXCA01	add "01" suffix
200A	1 N.O. & 1 N.C.	BDAUX12	add "11" suffix
	2 N.O. & 2 N.C.	BDAUX13	add "22" suffix
400A – 3150A	1 N.O. & 1 N.C.	BDAUX1	add "11" suffix
	2 N.O. & 2 N.C.	BDAUX2	add "22" suffix

Accessories

For use on:	Contact configuration		Installation suffix
16, 25, 40A	Neutral or isolated ground block		N or G
40A – 60A	Neutral or isolated ground block		N or G
80A – 100A	Neutral or isolated ground block		N or G
125A	Neutral or isolated ground block		N or G
200A – 1200A	Neutral block		N
1600A – 3150A	Neutral block		N
16A – 30A	Switched neutral block		S
40A – 60A	Switched neutral block		S
80A – 100A	Switched neutral block		S
125A	Switched neutral block		S
80A – 1200A	Service entrance, 3 wire		U
80A – 1200A	Service entrance, 4 wire		V
16A – 3150A	Start/stop pushbuttons		A
	2 position selector switch		C
	3 position selector switch		D
	Pilot light "red/run"		E
	Ammeter 1 phase		AM
	Voltmeter		VM

Ground lugs

All enclosed switches are provided with a standard integral ground lug.

Switch size	Ground lug Wire size
16A – 100A	(2) #14
200A – 400A	#6 – 250 mcm
600A – 1200A	#2 – 600 mcm
2000A – 3150A	(2) #2 – 600 mcm

Fusible

Non-Fused

Enclosed Fused

Enclosed Non-Fused

for Enclosed Non-Fusible Disconnect Switches

Switch ratings, 16 – 3150 Amps, 600V

UL General purpose amp rating	Maximum horsepower rating							Wire size for terminal lugs	For wire type	Approval	
	Single phase			Three phase							
	120V	200V	240V	200V – 208V	240V	480V	600V				
UL 508	16	1/2	1.5	1.5	3	5	10	10	#18 – 8	Cu	CSA, UL ^①
	25	3/4	2	2	7.5	7.5	15	20	#18 – 8	Cu	CSA, UL ^①
	40	1	3	3	10	10	20	25	#18 – 8	Cu	CSA, UL ^①
UL 98	60	2	5	5	15	15	30	30	#14 – 1	Cu	CSA, UL ^①
	80	2	5	5	20	20	40	50	#14 – 1	Cu	CSA, UL ^①
	30	2	5	5	10	10	20	30	#14 – 4	Cu	CSA, UL ^②
UL 98	60	3	7.5	7.5	20	20	40	40	#14 – 4	Cu	CSA, UL ^②
	100	5	15	15	25	25	50	40	#8 – 1/0	Cu	CSA, UL ^②
	125	7.5	20	20	30	30	60	75	#8 – 1/0	Cu	CSA, UL ^②
	200	—	—	—	60	75	150	200	#6 – 300 kcmil	Cu	CSA, UL ^②
	400	—	—	—	100	125	250	350	#2 – 600 kcmil	Cu	CSA, UL ^②
	600	—	—	—	150	200	400	500	(2) #2 – 600 kcmil	Cu	CSA, UL ^②
	800	—	—	—	200	250	500	600	(2) #2 – 600 kcmil	Cu/Al	CSA, UL ^②
	1200	—	—	—	—	—	—	—	(4) #2 – 600 kcmil	Cu/Al	CSA, UL ^②
	1600	—	—	—	—	—	—	—	(4) #2 – 600 kcmil	Cu/Al	CSA, UL ^②
	2000	—	—	—	—	—	—	—	(8) #2 – 600 kcmil	Cu/Al	CSA, UL ^②
3150 ^③	—	—	—	—	—	—	—	(8) #2 – 600 kcmil	Cu/Al	IEC	

Handle ratings, 16 – 3150 Amps, 600V

Amperage range	Style type	NEMA	Color	Marking	Defeatable	Padlockable	Catalog number suffix	Catalog number
16 – 100	Selector	1,3R,12	Black	0/I & OFF/ON	Yes	Yes	BJ	CDH5S
	Selector	1,3R,12	Red/Yel	0/I & OFF/ON	Yes	Yes	YJ	CDH6S
	Pistol	1,3R,12	Black	0/I & OFF/ON	Yes	Yes	B6	BDH106
	Pistol	1,3R,12	Red/Yel	0/I & OFF/ON	Yes	Yes	Y6	BDH107
	Pistol	1,3R,4,4X,12	Black	0/I & OFF/ON	Yes	Yes	B6	CDHXB65
	Pistol	1,3R,4,4X,12	Red/Yel	0/I & OFF/ON	Yes	Yes	Y6	CDHXY65
125	Pistol	1,3R,12	Black	0/I & OFF/ON	Yes	Yes	B6	BDH120
	Pistol	1,3R,12	Red/Yel	0/I & OFF/ON	Yes	Yes	Y6	BDH121
	Pistol	1,3R,4,4X,12	Black	0/I & OFF/ON	Yes	Yes	B8	CDHXB86
	Pistol	1,3R,4,4X,12	Red/Yel	0/I & OFF/ON	Yes	Yes	Y8	CDHXY86
200	Pistol	1,3R,12	Black	0/I & OFF/ON	Yes	Yes	B8	BDH110
	Pistol	1,3R,12	Red/Yel	0/I & OFF/ON	Yes	Yes	Y8	BDH111
	Pistol	1,3R,4,4X,12	Black	0/I & OFF/ON	Yes	Yes	B8	CDHXB88
	Pistol	1,3R,4,4X,12	Red/Yel	0/I & OFF/ON	Yes	Yes	Y8	CDHXY88
400 – 3150	Pistol	1,3R,12	Black	0/I & OFF/ON	Yes	Yes	B4	BDH114
	Pistol	1,3R,12	Red/Yel	0/I & OFF/ON	Yes	Yes	Y4	BDH115
	Pistol	1,3R,12	Black	0/I & OFF/ON	Yes	Yes	B7	BDH116
	Pistol	1,3R,12	Red/Yel	0/I & OFF/ON	Yes	Yes	Y7	BDH117
	Pistol	1,3R,4,4X,12	Black	0/I & OFF/ON	Yes	Yes	B4	CDHXB12
	Pistol	1,3R,4,4X,12	Red/Yel	0/I & OFF/ON	Yes	Yes	Y4	CDHXY12
	Pistol	1,3R,4,4X,12	Black	0/I & OFF/ON	Yes	Yes	B7	CDHXB22
	Pistol	1,3R,4,4X,12	Red/Yel	0/I & OFF/ON	Yes	Yes	Y7	CDHXY22
	Pistol	1,3R,4,4X,12	Metal	0/I & OFF/ON	No	Yes	8	BDH8

① UL listed (UL508).
 ② UL listed (UL98).
 ③ IEC rated only.

Introduction

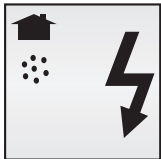
An enclosure is a surrounding case constructed to provide a degree of protection to personnel against accidental contact with the enclosed equipment and to provide a degree of protection to the enclosed equipment against specified environmental conditions.

A brief description of the more common types of enclosures used by the electrical industry relating to their environmental capabilities follows. Refer to

NEMA Standards Publication for more information regarding applications, features and design tests.

Individual NEMA product Standards Publications or third party certification standards may contain additional requirements for product testing and performance.

Definitions pertaining to nonhazardous locations



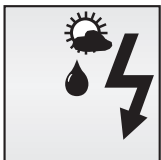
Type 1

Enclosures are intended for indoor use primarily to provide a degree of protection against limited amounts of falling dirt. (NEMA Standard 7-15-1991.)



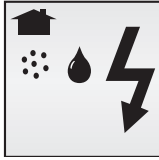
Type 4X

Enclosures are intended for indoor or outdoor use primarily to provide a degree of protection against corrosion, windblown dust and rain, splashing water, hose-directed water and damage from external ice formation. (NEMA Standard 1-10-1979)



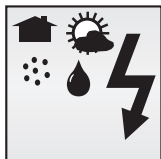
Type 3R

Enclosures are intended for outdoor use primarily to provide a degree of protection against rain, sleet and damage from external ice formation. (NEMA Standard 7-15-1991.)



Type 12

Enclosures are intended for indoor use primarily to provide a degree of protection against circulating dust, falling dirt, and dripping noncorrosive liquids. (NEMA Standard 7-15-1991.)



Type 4

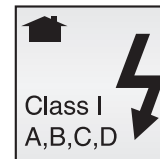
Enclosures are intended for indoor or outdoor use primarily to provide a degree of protection against windblown dust and rain, splashing water, hose-directed water and damage from external ice formation. (NEMA Standard 1-10-1979.)



Type 13

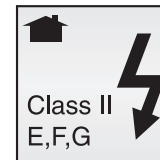
Enclosures are intended for indoor use primarily to provide a degree of protection against dust, spraying of water, oil and noncorrosive coolant. (NEMA Standard 1-10-1979.)

Definitions pertaining to hazardous locations



Type 7

Enclosures are intended for indoor use in locations classified as Class I, Groups A, B, C, or D, as defined in the National Electrical Code. (NEMA Standard 7-15-1991.)



Type 9

Enclosures are intended for indoor use in locations classified as Class II, Groups E, F, or G, as defined in the National Electrical Code. (NEMA Standard 7-15-1991.)

Fusible

Non-Fused

Enclosed Fused

Enclosed Non-Fused