

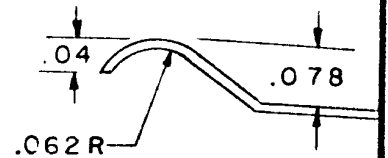
MICRO SWITCH

A DIVISION OF MINNEAPOLIS-HONEYWELL REGULATOR COMPANY
 FREEPORT, MINNESOTA
 FED MFR CODE 91929

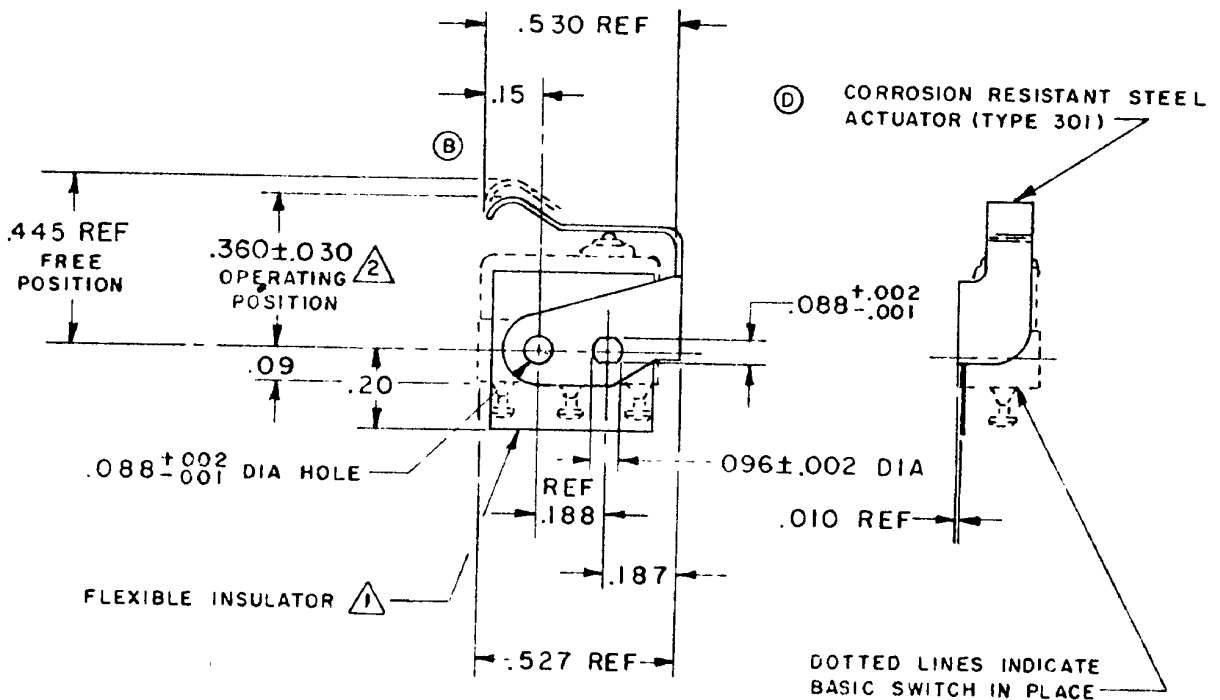
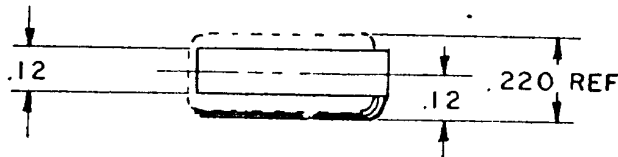
ACTUATOR-SWITCH

CATALOG LISTING

JX-70



LEVER DETAIL



NOTE—
 (A) FURNISHED UNASSEMBLED
 (B) SLIGHT ROTATION BETWEEN BASIC AND ACTUATOR MAY BE NECESSARY TO OBTAIN OPERATING POSITION, BASED ON USING NO. 2-56 MACHINE SCREWS

THIS DRAWING COVERS A PROPRIETARY ITEM AND IS THE PROPERTY OF MICRO SWITCH, A DIVISION OF MINNEAPOLIS-HONEYWELL REGULATOR CO. THIS DRAWING IS NOT TO BE COPIED OR USED WITHOUT THE APPROVAL OF MICRO SWITCH.

CHARACTERISTICS WITH ISKI-T BASIC SWITCH INSTALLED

OPERATING FORCE	9 OZ MAX
RELEASE FORCE	2 OZ MIN
DIFFERENTIAL TRAVEL	.025 MAX
OVERTRAVEL	.015 MIN

ELECTRICAL DATA

CONTACT ARRANGEMENT	BREAK DISTANCE
---------------------	----------------

SCALE 2 TO 1

DO NOT SCALE PRINT

UNLESS OTHERWISE SPECIFIED
 DIMENSIONS ARE IN INCHES
TOLERANCES ARE:
 ONE PLACE (.01) ±.030
 TWO PLACE (.00) ±.018
 THREE PLACE (.000) ±.008
 ANGLES ±

WEIGHT

(M) JX-70
 ISSUE 1

REPLACES

RELEASE NO. SR 9963

CHECK

CHECK

CHECK

MBF 27 NOV 61
 DRAWN

JX-70

M

DRAWING NUMBER

287

288

ISSUE

288

288

REVISIONS

A	SR 9963	M B F	27 NOV 61
B	CO18136	M B F	17 JUNE 63
C	CO22579	OMW	1 MAY 67
D	CO22579	M B S	19 APR 68
E	CO79303	DLT	9 MAR 95
F	CO82929	DLT	13 MAY 96