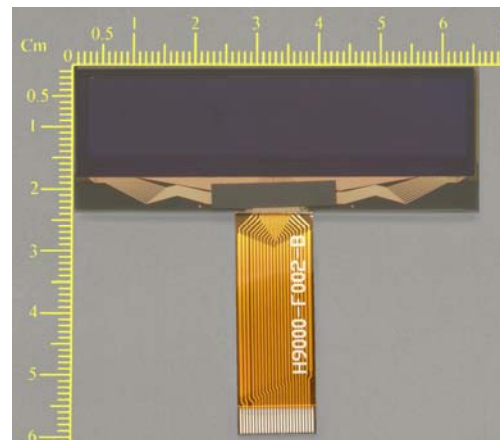


OLED DISPLAY SOLUTIONS

Pictiva™ 2.4-inch 128x22 OLED display



OS128022PR24MxxC10

Features

- Long-lifetime OLED
- 180° viewing angle
- Fast response, video capable
- High contrast
- Wide operating temperature range
- RoHS compliant

Benefits

- Ease of readability
- No backlight required
- Low power consumption

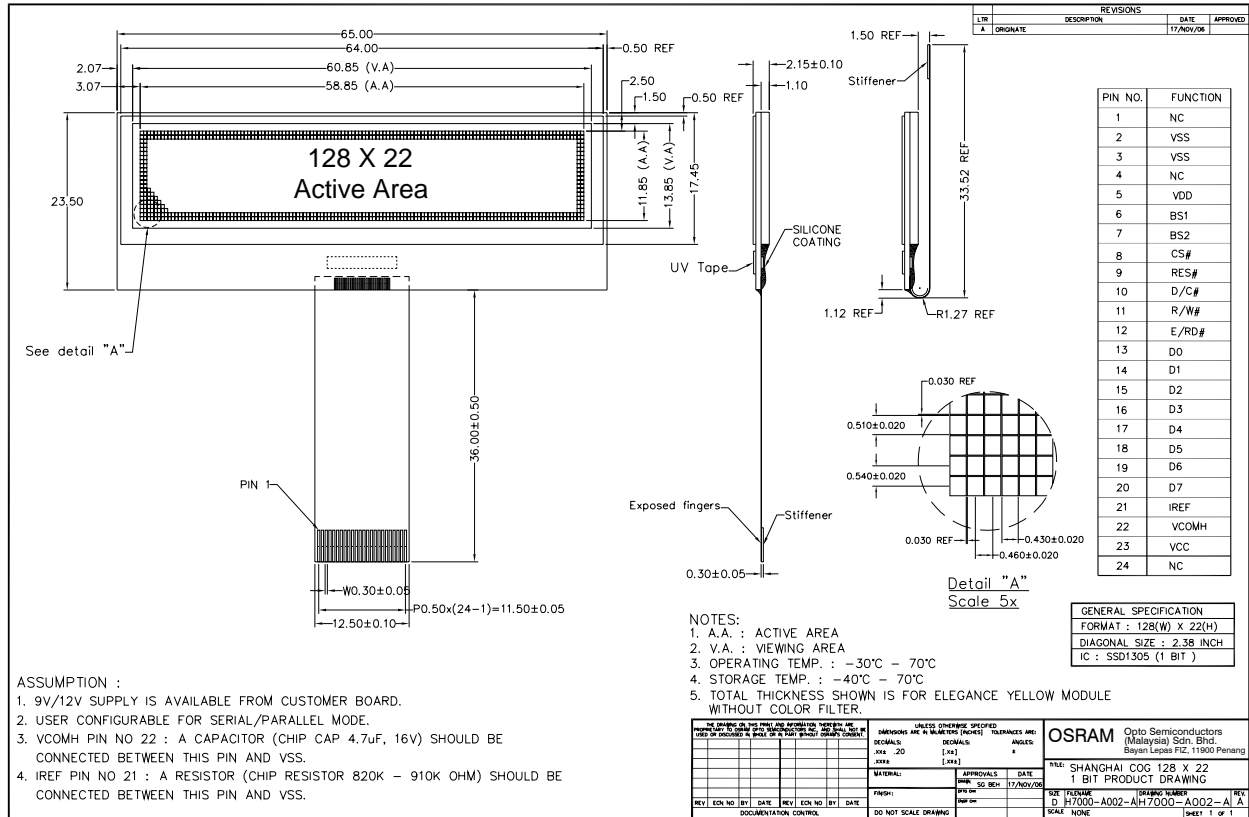
Applications

- Audio/Video
- Entertainment
- Industrial
- Medical
- Instruments

Specifications

Display Format	128 Columns x 22 Rows				
Diagonal	2.4 inch				
Pixel Pitch	0.460 (W) x 0.540 (H) mm				
Color, Luminance & lifetime	Color	CIE x	CIE y	Cd/m²	Lifetime hrs, 25°C
	Elegance Yellow	0.46	0.54	100	40K
	Lime Green	0.37	0.62	60	40K
	Golden Orange	0.60	0.40	30	40K
	Snow White	0.32	0.40	85	7K
	Sky Blue	0.185	0.25	25	7k
Grayscale	1 bit				
Active Area	58.85 (W) X 11.85 (H) mm				
Module Size	65.00 (W) X 59.50 (H) X 2.15 mm (T) including flex not folded				
Viewing Angle	180°				
Contrast Ratio	2000:1 dark ambient				
Temperature	-30°C to 70°C				
Logic Voltage	2.4V – 3.5V				
Supply Voltage	12V				
Power Cons.	0.05 mW (sleep mode)				
Interface	Parallel/Serial				
Driver	SSD1305				
Weight	5.4g typical				

Mechanical Dimensions and Pin Description



Ordering Information

Part Number	Order Number	Description
OS128022PR24MY0C10	Q65110A4988	Pictiva™ 2.4 inch 128x22 OLED Display, Elegance Yellow
OS128022PR24MG1C10	Q65110A5238	Pictiva™ 2.4 inch 128x22 OLED Display, Lime Green
OS128022PR24MO2C10	Q65110A5237	Pictiva™ 2.4 inch 128x22 OLED Display, Golden Orange
OS128022PR24MW1C10	Q65110A6112	Pictiva™ 2.4 inch 128x22 OLED Display, Snow White
OS128022PR24MB2C10	Q65110A6555	Pictiva™ 2.4 inch 128x22 OLED Display, Sky Blue

Contact Information

OSRAM Opto Semiconductors

Asia :

+60(0) 4 631-8100

prasia@osram-os.com

Europe :

+49(0) 941-850-3535

pr@osram-os.com

North America :

+1-888-446-7726 ext.4310

info@osram-os.com

Web :

www.pictiva.com

©2005 OSRAM Opto Semiconductors. OSRAM, the OSRAM logo and Pictiva are trademarks and/or service marks of OSRAM Opto Semiconductors, Inc. Other brands are trademarks of their respective holders. OSRAM hold a license from Cambridge Display Technology to manufacture and sell polymer light emitting display. The specifications contained in this document are subjected to change without notice. OSRAM Opto Semiconductors, Inc. assumes no responsibility or liability arising out of the application or use of any legal information, product or service described herein except as expressly agreed to in writing by OSRAM Opto Semiconductors, Inc. Customers are advised to obtain the latest version of the device specification before relying on any published information and before placing orders for products or services. All right reserved
 Lit# 517DS-1 updated on 12/22/05