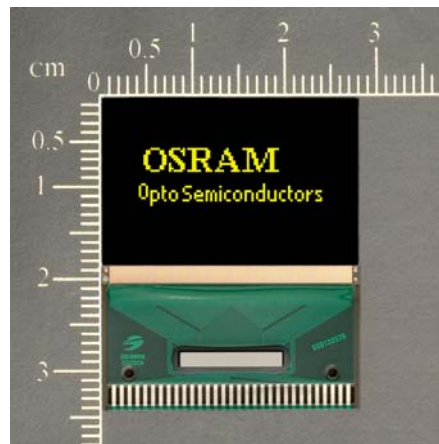


OLED DISPLAY SOLUTIONS

Pictiva™ 0.9-inch 80x48 OLED display



Features

- Long-lifetime OLED
- 180° viewing angle
- Fast response, video capable
- High contrast
- Wide operating temperature range
- RoHS compliant

Benefits

- Ease of readability
- No backlight required
- Low power consumption

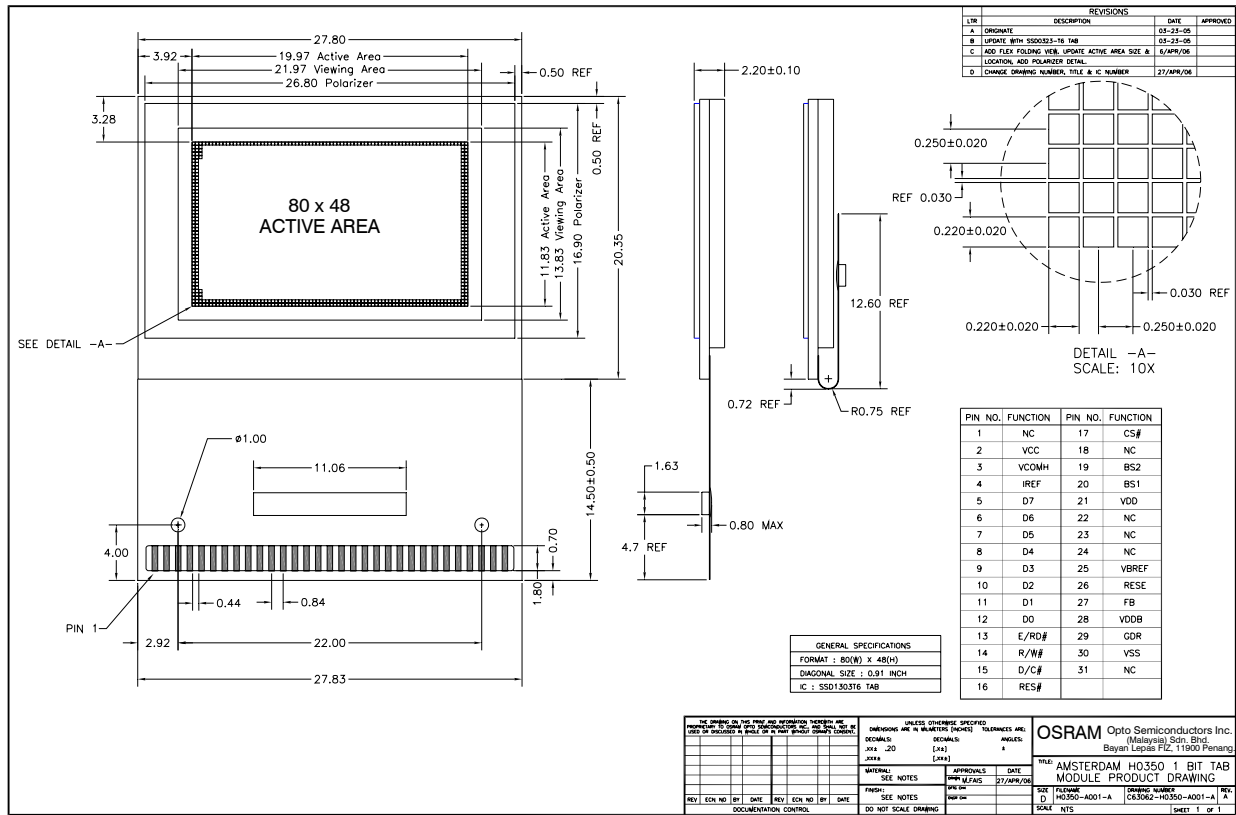
Applications

- Audio/Video
- Entertainment
- Industrial
- Medical
- Instruments

Specifications

| | | | | | |
|--|-------------------------------------|-------|-------|-------------------|--------------------|
| Display Format | 80 Columns x 48 Rows | | | | |
| Diagonal | 0.9 inch | | | | |
| Pixel Pitch | 0.250 (W) x 0.250 (H) mm | | | | |
| Color, Luminance & lifetime | Color | CIE x | CIE y | Cd/m ² | Lifetime hrs, 25°C |
| | Elegance Yellow | 0.46 | 0.54 | 100 | 40K |
| | Lime Green | 0.37 | 0.62 | 120 | 10K |
| | Golden Orange | 0.60 | 0.40 | 60 | 10K |
| Grayscale | 1 bit | | | | |
| Active Area | 19.97 (W) X 11.83 (H) mm | | | | |
| Module Size | 27.80 (W) X 34.85 (H) X 2.20 mm (T) | | | | |
| Viewing Angle | 180° | | | | |
| Contrast Ratio | 2000:1 dark ambient | | | | |
| Temperature | -30°C to 70°C | | | | |
| Logic Voltage | 2.4V – 3.5V | | | | |
| Supply Voltage | 12.5V | | | | |
| Power Cons. | 0.05 mW (sleep mode) | | | | |
| Interface | Parallel/Serial | | | | |
| Driver | SSD1303 | | | | |
| Weight | 2.54g typical | | | | |

Mechanical Dimensions and Pin Description



Ordering Information

| Part Number | Order Number | Description |
|--------------------|--------------|---|
| OS080048PN09MY0B10 | Q65110A5709 | Pictiva™ 0.9 inch 80x48 OLED Display, Elegance Yellow |
| OS080048PN09G10B10 | Q65110A5705 | Pictiva™ 0.9 inch 80x48 OLED Display, Lime Green |
| OS080048PN09O20B10 | Q65110A5708 | Pictiva™ 0.9 inch 80x48 OLED Display, Golden Orange |

Contact Information

OSRAM Opto Semiconductors

Asia :

+60(0) 4 631-8100

prasia@osram-os.com

Europe :

+49(0) 941-850-3535

pr@osram-os.com

North America :

+1-888-446-7726 ext.4310

info@osram-os.com

Web :

www.pictiva.com

©2005 OSRAM Opto Semiconductors. OSRAM, the OSRAM logo and Pictiva are trademarks and/or service marks of OSRAM Opto Semiconductors, Inc. Other brands are trademarks of their respective holders. OSRAM hold a license from Cambridge Display Technology to manufacture and sell polymer light emitting display. The specifications contained in this document are subjected to change without notice. OSRAM Opto Semiconductors, Inc. assumes no responsibility or liability arising out of the application or use of any legal information, product or service described herein except as expressly agreed to in writing by OSRAM Opto Semiconductors, Inc. Customers are advised to obtain the latest version of the device specification before relying on any published information and before placing orders for products or services. All right reserved
 Lit# 517DS-1 updated on 12/22/05