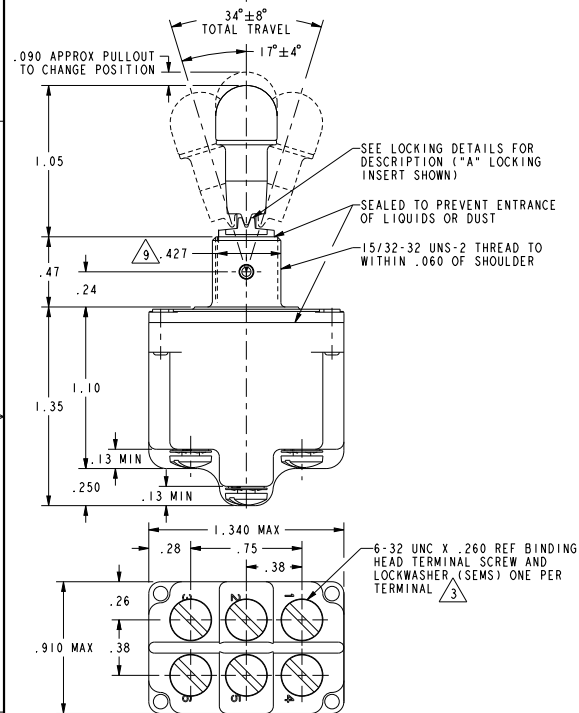
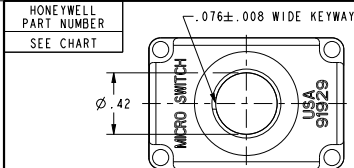


HONEYWELL
PART NUMBER
SEE CHART

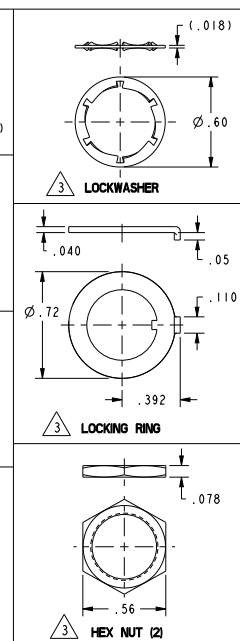
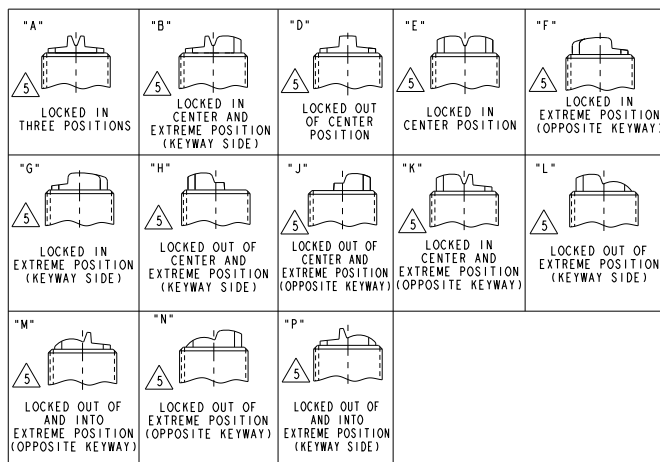
REV	DOCUMENT	CHANGED BY	CHECK
33	0056412	SJK	10SEP09 CMH
REDRAWN WITHOUT CHANGE IN PRO-E			



- NOTES:
- SWITCHES ARE CAPABLE OF WITHSTANDING A TEMPERATURE OF 160°F CONTINUOUSLY AT FULL RATED LOAD.
 - CIRCUIT DESIGNATION, MICRO SWITCH CATALOG LISTING AND "MS" NUMBER MARKED ON SIDE OF SWITCH.
 - FURNISHED UNASSEMBLED.
 - FOR TERMINAL COVER, SEE MICRO SWITCH CATALOG LISTING 5PAB.
 - KEYWAY SHOWN ON LEFT SIDE.
 - SUFFIX LETTER MUST BE ADDED FOR DESIRED TYPE OF TOGGLE LOCKING. SEE CHART FOR AVAILABLE LOCKING COMBINATIONS.
 - APPLIES ONLY TO "ON" AND "MOMENTARY ON" POSITIONS.
 - THESE SWITCHES ARE QUALIFIED UNDER MIL-S-3950.
 - FROM BOTTOM OF KEYWAY TO MAJOR DIA. OF 15/32 THREAD.

15A-125, 250 OR 277 VAC	CE
1/2 HP-125VAC; 1HP-250, 277VAC	
5A-125VAC "L" CODE L191	
10A-125, 250 OR 277 VAC	CE
1/4HP-125VAC; 1/2HP-250, 277VAC	
3A-125VAC "L" CODE L192	

MILITARY STANDARD NUMBER	CATALOG LISTING	AVAILABLE LOCKING COMBINATIONS FOR CONFIGURATION SEE LETTERED DETAILS	CIRCUIT MADE WITH TOGGLE LEVER IN			MILITARY RATING (AMPS)								
			KEYWAY SIDE (1-2, 4-5)	CENTER (1-2, 4-5)	OPPOSITE KEYWAY (2-3, 5-6)	RESISTIVE LOAD		LAMP LOAD		INDUCTIVE LOAD				
						DC VOLTS	AC VOLTS	28 VDC	125 VAC	28 VDC	125 VAC			
24659-21	2TL1-1	A,B,D,E,F,G,H,J,K,L,M,N,P	ON	OFF	ON	20	.75	.5	15	6	7	4	15	15
24659-22	2TL1-2	D,F,G	OFF	NONE	ON	(REFER TO L191 FOR UL RATING)								
24659-23	2TL1-3	D,F,G	ON	NONE	ON	(REFER TO L191 FOR UL RATING)								
24659-24	2TL1-21	E,F,K,M	NONE	OFF	ON	(REFER TO L191 FOR UL RATING)								
24659-33	2TL1-31	E,F,K,M	NONE	ON	ON	(REFER TO L191 FOR UL RATING)								
24659-29	2TL1-4	F	MOM OFF	NONE	ON	18	.75	.5	11	6	5	2	10	8
24659-31	2TL1-5	E,F,K,L,M,N	MOM ON	OFF	ON	(REFER TO L192 FOR UL RATING)								
24659-30	2TL1-6	F	MOM ON	NONE	OFF	(REFER TO L192 FOR UL RATING)								
24659-27	2TL1-7	E,L,N	MOM ON	OFF	MOM ON	(REFER TO L192 FOR UL RATING)								
24659-26	2TL1-8	F	MOM ON	NONE	ON	(REFER TO L192 FOR UL RATING)								
24659-32	2TL1-51	E	NONE	ON	MOM ON	(REFER TO L192 FOR UL RATING)								
24659-28	2TL1-61	E	MOM ON	OFF	NONE	(REFER TO L192 FOR UL RATING)								



DESIGN UNITS: INCH
TOLERANCES UNLESS NOTED:

NO PLACES	X	±
ONE PLACE	.X	±
TWO PLACES	.XX	±
THREE PLACES	.XXX	±
ANGLES	X	±

THIRD ANGLE PROJECTION

DRAWN LSD 29JUN77
CHECK GCH 07JUL77

THIS DRAWING COVERS A PROPRIETARY ITEM AND IS THE PROPERTY OF HONEYWELL. THIS DRAWING IS NOT TO BE COPIED OR USED WITHOUT THE PERMISSION OF HONEYWELL.

INTERPRET PER ASME Y14.5M-1994 OTHER HONEYWELL ENGINEERING STANDARDS MAY APPLY
PRO/ENGINEER 3D SCALE 2:1 HEIGHT: .15 LB. APPROX SHEET 1 OF 1

Honeywell

SWITCH - TOGGLE

SIZE TYPE CAGE CODE DRAWING NAME
C I - 2TL1 SERIES CHART 2 33