



### GKEA06L



*Actual product appearance may vary.*

**GKE Series, Dual Entry Key-Operated Safety Interlock Switch, 2NC Direct Opening, Slow Action, 1/2 NPT, Plastic, Silver Contacts**

#### Features

- Positive opening safety contacts
- Multiple contact configurations
- Rotating head allows actuator engagement from five orientations
- Double insulation per IEC 60947-5-1
- Choice of two standard actuators
- Small size
- Global approvals (cULus, CE, CCC)

#### Potential Applications

- Plastic molding equipment
- Packaging machinery
- Semiconductor manufacturing equipment
- Woodworking machinery
- Metal converting equipment
- Printing/paper finishing equipment

#### Description

The GKE Series safety key-operated switch provides superior reliability for safety hard guarding applications in a compact, cost-effective package. The GKE conforms to IEC 60947-5-1 and carries the cULus, CE, and CCC approvals.

Product Specifications	
Product Type	Key Operated Safety Interlock Switch
Actuator	Key
Switch Type	2NC Direct Opening, Slow Action
Contact Material	Silver
Termination Type	1/2 NPT
Ampere Rating	100 mA to 10 A (Thermal)
Voltage	500 Vac and 250 Vdc Maximum
Housing Material	Plastic
Housing Type	EN50047
Series Name	GKE
Shock	50 g per IEC 68-2-27

Vibration	10 g per IEC 68-2-6
Sealing	IP66, NEMA 1, 12, 13
Approvals	cULus, CE, CCC
CSA File #	E37138
UL File #	E37138, E157416
Agency Approvals and Standards	IEC 947-5-1, EN60947-5-1
Mechanical Life	1 Million
Operating Temperature Range	-25 °C to 85 °C [-13 °F to 185 °F]
Availability	Global
UNSPSC Code	302119
UNSPSC Commodity	302119 Switches and controls and relays
Note 1	Low Voltage Directive 73/23/EEC, as amended by directive 93/68/EEC. Machinery Directive 98/37/EEC only as the directives relate to the components being used in a safety function.

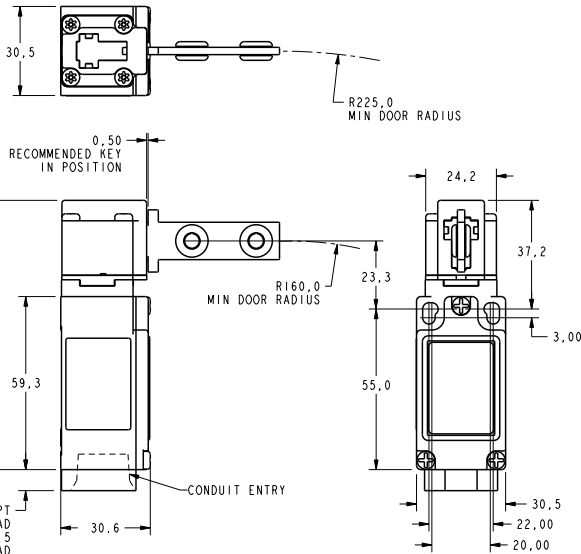
# GKE

CONDUIT CODE	BASIC SWITCH CODE $\Delta$ 6		HEAD ORIENTATION CODE
CODE	CODE		CODE
<b>A</b>	1/2 NPT	<b>01</b> SNAP ACTION INC - 1NO, A600	<b>L</b> OPENING TO FRONT AND TOP
<b>C</b>	20 MM	<b>03</b> SLOW ACTING INC - 1NO BBM, A600	<b>M</b> OPENING TO RIGHT AND TOP
		<b>06</b> SLOW ACTING 2NC, A500	<b>N</b> OPENING TO BACK AND TOP
			<b>P</b> OPENING TO LEFT AND TOP

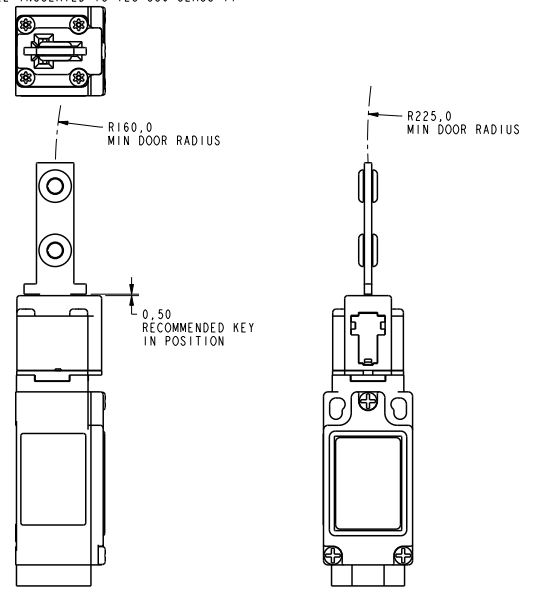
NOTES

- 1 - THERMOPLASTIC BODY AND HEAD
  - 2 - MINIMUM OPERATING VELOCITY (Vmin) = 2 mm/S  
MAXIMUM OPERATING VELOCITY (Vmax) = 200 mm/S  
MAXIMUM OPERATING FREQUENCY (F max) = 100 OPS/MIN
  - 3 - INSERTION FORCE = 7N NOM  
EXTRACTION FORCE = 15N NOM  
DISCONNECT FORCE = 25N MAX
  - 4 - SNAP ACTION N.C. CONTACTS: POSITIVE OPENING  
SLOW MAKE AND BREAK N.C. CONTACTS: DIRECT ACTING
  - 5 - WHEN KEY IS INSERTED: N.C. TERMINALS ARE 11/12 AND/OR 21/22  
N.O. TERMINALS ARE 13/14
- $\Delta$ 6 - SEE BASIC SWITCH COLUMN FOR VOLTAGE RATING  
T-15 TAMPER PROOF TORX DRIVER BIT GKZT15BIT MAY BE PURCHASED SEPARATELY FOR USE IN REORIENTING OPERATING HEAD, SEE INSTALLATION INSTRUCTIONS  
 $\Delta$ 9 - SWITCH MUST OPERATE BEFORE REACHING MINIMUM INSERTION DISTANCE  
KEY ACTUATOR NOT SUPPLIED WITH PRODUCT, ACTUATOR MUST BE PURCHASED SEPARATELY  
 $\Delta$ 10 - RECOMMENDED TIGHTENING TORQUE FOR MOUNTING SCREW : 1 - 1.4 Nm  
 $\Delta$ 11 - ENCLOSURE DOUBLE INSULATED TO IEC 536 CLASS II

REV	DOCUMENT	CHANGED BY	CHECK
B	0016724	TSG 08NOV05	RJ



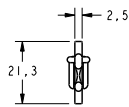
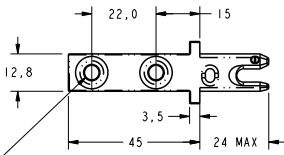
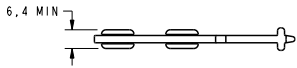
FRONT ENTRY



TOP ENTRY

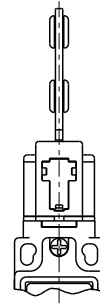
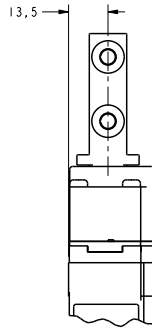
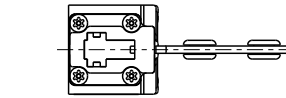
ELECTRICAL RATING				ENVIRONMENTAL		APPROVALS
AC		DC				
A500/A600 Ue $\Delta$ 6	AC15 Ie	Q300 Ue	DC13 Ie	IP 66 NEMA 1, 12 & 13		IEC 60947-5-1 EN50047
(VOLTS)	(AMPS)	(VOLTS)	(AMPS)	TEMP RANGE: -25°C TO 85°C		
120	6	24	2.8	STORAGE: -40°C TO 85°C		
240	3	125	1.5	SHOCK: 50G PER IEC 68-2-27		
380	1.9	250	0.27	VIBRATION: 10G PER IEC 68-2-6		
480	1.5					
500	1.4					
600	1.2					
1TH = 10A						

DESIGN UNITS: MM		DRAWN	MAM	23 JUN 05		TITLE						
TOLERANCES UNLESS NOTED:		CHECK	-	23 JUN 05		SWITCH, KEY INTERLOCK						
NO PLACE	X ±	1.000	THIS DRAWING COVERS A PROPRIETARY ITEM AND IS THE PROPERTY OF HONEYWELL. THIS DRAWING IS NOT TO BE COPIED OR USED WITHOUT THE PERMISSION OF HONEYWELL.		SIZE	C	TYPE	I	DRAWING NAME	GKE SERIES CHART 1	REV	B
ONE PLACE	.X ±	0.4	INTERPRET PER ASME Y14.5M-1994 OTHER HONEYWELL ENGINEERING STANDARDS MAY APPLY		SCALE	3D	FULL	SHEET	1	OF	3	
TWO PLACE	.XX ±	0.15										
THREE PLACE	.XXX ±	0.005										
FOUR PLACE	.XXXX ±	0.0005										
ANGLES	X ±	3										

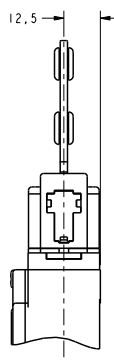
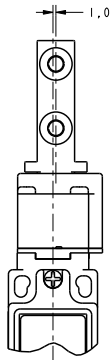
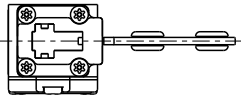


2X HOLES FOR M4 OR #8 SCREWS

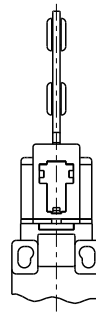
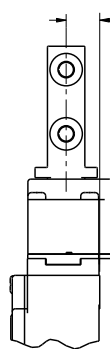
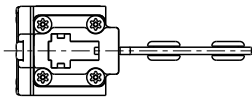
**ACTUATOR GKZ51M**  
**STRAIGHT KEY**  
 (STAINLESS STEEL)



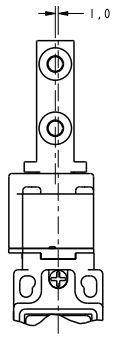
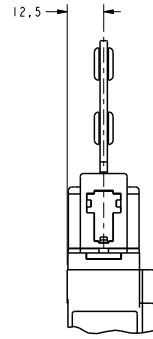
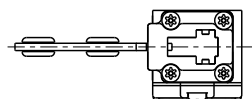
HEAD ORIENTATION CODE L



HEAD ORIENTATION CODE M



HEAD ORIENTATION CODE N

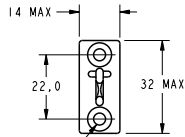
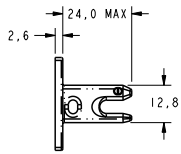
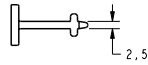


HEAD ORIENTATION CODE P

THIS DRAWING COVERS A PROPRIETARY ITEM AND IS THE PROPERTY OF HONEYWELL. THIS DRAWING IS NOT TO BE COPIED OR USED WITHOUT THE PERMISSION OF HONEYWELL.

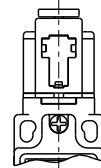
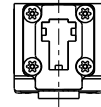
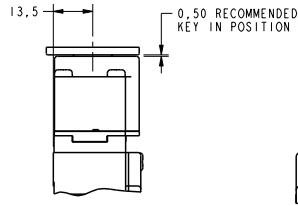
**Honeywell**

SIZE	DWG TYPE	DRAWING NAME	REV
C	I	GKE SERIES CHART 1	B
SCALE	FULL	SHEET 2 OF 3	

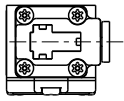


2X HOLES FOR M4 OR #8  
COUNTERSUNK SCREW  
WITH 45° COUNTERSINK  
X  $\nabla$  2,1

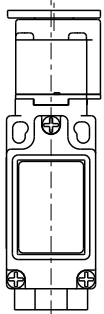
**ACTUATOR GKZ52M**   
**90° KEY**  
**(STAINLESS STEEL)**



HEAD ORIENTATION CODE L

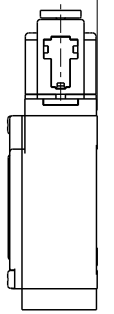


1.0

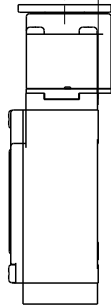


HEAD ORIENTATION CODE M

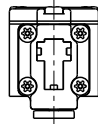
12.5



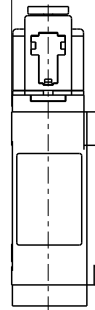
11.5



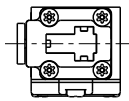
HEAD ORIENTATION CODE N



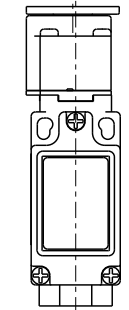
12.5



HEAD ORIENTATION CODE P



1.0



THIS DRAWING COVERS A PROPRIETARY  
ITEM AND IS THE PROPERTY OF  
HONEYWELL. THIS DRAWING IS  
NOT TO BE COPIED OR USED WITHOUT  
THE PERMISSION OF HONEYWELL.

<b>Honeywell</b> SIZE DWG TYPE DRAWING NAME <b>C I GKE SERIES CHART 1</b>		REV
		<b>B</b>
SCALE FULL	SHEET 3 OF 3	