

TS10P01G - TS10P07G

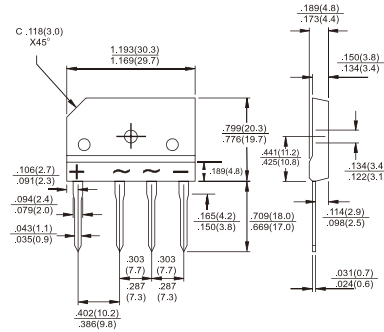
Single Phase 10.0 AMPS.
Glass Passivated Bridge Rectifiers



TS-6P

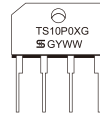
Features

- ◇ UL Recognized File # E-326243
- ◇ Glass passivated junction
- ◇ Ideal for printed circuit board
- ◇ High case dielectric strength of 2000V_{RMS}
- ◇ Plastic material has Underwriters Laboratory Flammability Classification 94V-0
- ◇ Typical IR less than 0.1uA
- ◇ High surge current capability to 200A
- ◇ High temperature soldering guaranteed: 260 °C / 10 seconds at 5 lbs., (2.3 kg) tension
- ◇ Green compound with suffix "G" on packing code & prefix "G" on datecode.



Dimensions in inches and (millimeters)

Marking Diagram



TS10P0XG = Specific Device Code
G = Green Compound
Y = Year
WW = Work Week

Mechanical Data

- ◇ Case: Molded plastic body
- ◇ Terminals: Pure tin plated , Lead free. Leads solderable per MIL-STD-202 Method 208
- ◇ Weight: 7.15 grams
- ◇ Mounting torque: 8.17 in. lbs. max.

Maximum Ratings and Electrical Characteristics

Rating at 25°C ambient temperature unless otherwise specified.

Single phase, half wave, 60 Hz, resistive or inductive load.

For capacitive load, derate current by 20%

Type Number	Symbol	TS10P01G	TS10P02G	TS10P03G	TS10P04G	TS10P05G	TS10P06G	TS10P07G	Units
Maximum Recurrent Peak Reverse Voltage	V_{RRM}	50	100	200	400	600	800	1000	V
Maximum RMS Voltage	V_{RMS}	35	70	140	280	420	560	700	V
Maximum DC Blocking Voltage	V_{DC}	50	100	200	400	600	800	1000	V
Maximum Average Forward Rectified Current @ $T_c=110^\circ\text{C}$	$I_{F(AV)}$	10.0							A
Peak Forward Surge Current, 8.3 ms Single Half Sine-wave Superimposed on Rated Load (JEDEC method)	I_{FSM}	200							A
Rating of fusing (t < 8.3ms)	I^2t	166							A ² S
Maximum Instantaneous Forward Voltage @ 5.0A @ 10.0A	V_F	1.0 1.1							V
Maximum DC Reverse Current @ $T_A=25^\circ\text{C}$ at Rated DC Blocking Voltage (Note 1) @ $T_A=125^\circ\text{C}$	I_R	10 500							μA μA
Typical Junction Capacitance Per Leg(Note 3)	C_j	77							pF
Typical Thermal Resistance(Note 2)	$R_{\theta JC}$	1.4							$^\circ\text{C}/\text{W}$
Operating Temperature Range	T_J	-55 to +150							$^\circ\text{C}$
Storage Temperature Range	T_{STG}	-55 to +150							$^\circ\text{C}$

Note : 1. Pulse Test with PW=300 usec, 1% Duty Cycle
2. Device mounted on 3" x 4" x 0.25" Al plate heat sink.
3. Measured at 1MHz and applied Reverse bias of 4.0V DC.

Version: F10

RATINGS AND CHARACTERISTIC CURVES (TS10P01G THRU TS10P07G)

FIG 1 Maximum Derating Curve for Output Current

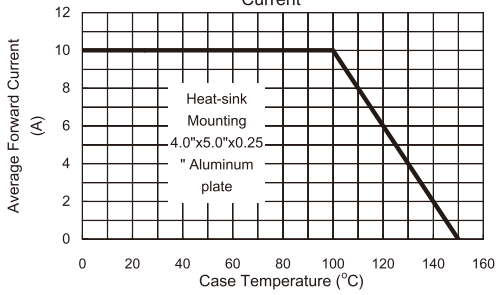


FIG 2 Maximum Forward Surge Current per Leg

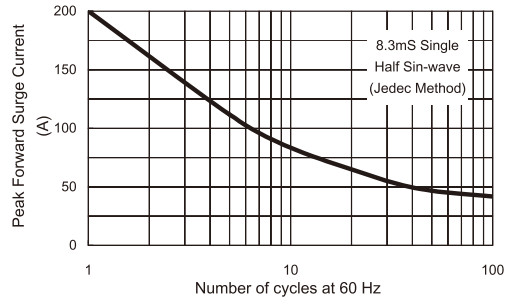


FIG 3 Typical Reverse Characteristics per Leg

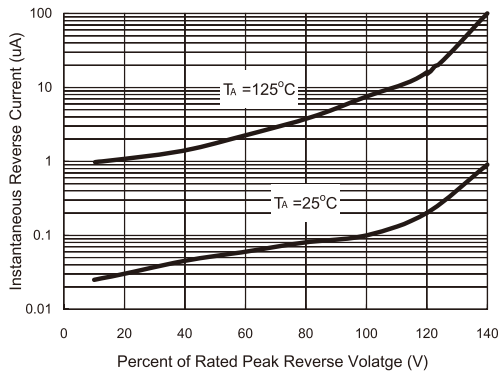


FIG 4 Typical Forward Characteristics per Leg.

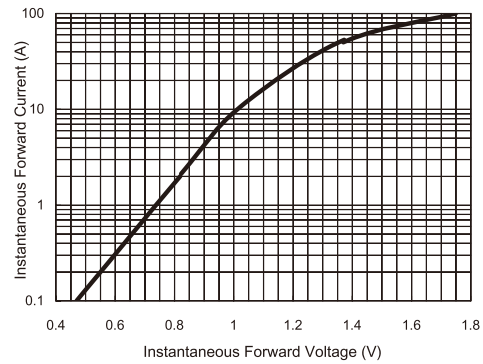


FIG 5 Typical Junction Capacitance

