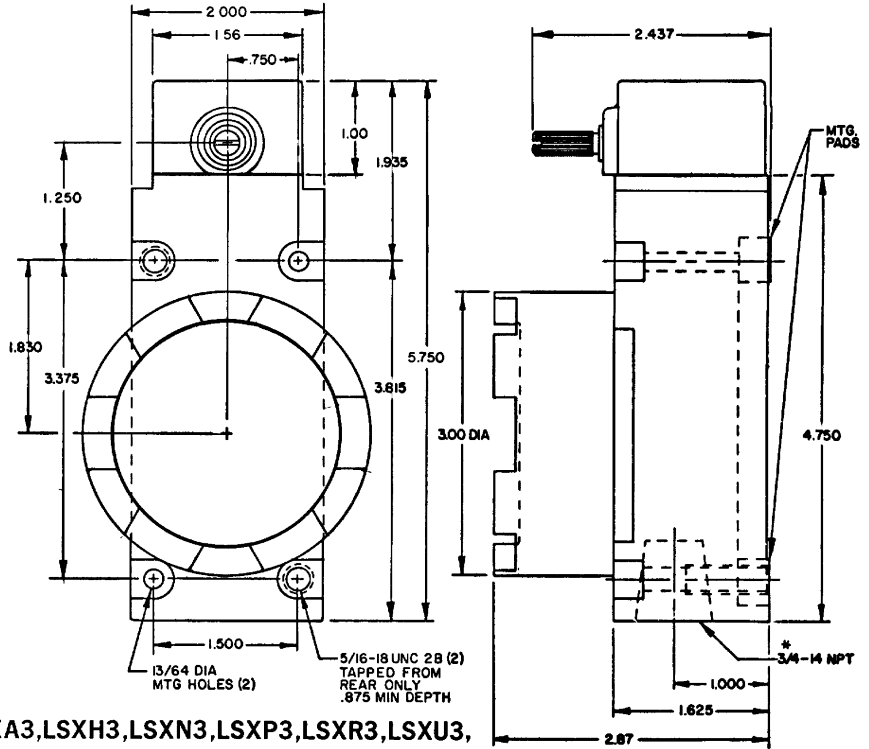
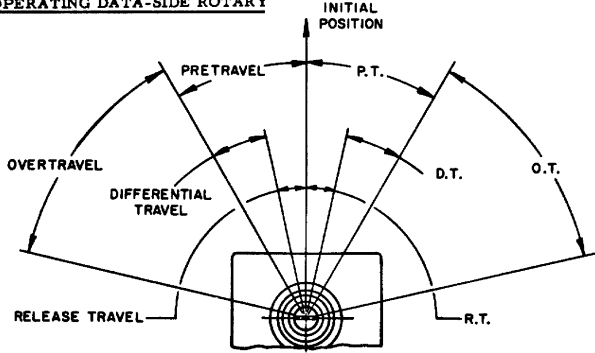


SIDE ROTARY

NOTE
 1 - EXPLOSION PROOF-UNDERWRITERS LAB INC. LISTED FOR HAZARDOUS LOCATIONS CLASS I, GROUPS B,C, AND D; CLASS II GROUPS E,F AND G

OPERATING DATA-SIDE ROTARY



TYPE LSXA3,LSXH3,LSXN3,LSXP3,LSXR3,LSXU3, LSXA4,LSXH4,LSXN4,LSXP4,LSXR4 and LSXM4 and LSXU4
 *(LSXA3,LSXH3,LSXN3 LSXP3,LSXR3 and LSXU3 HAVE 1/2-14 NPT CONDUIT OPENINGS)

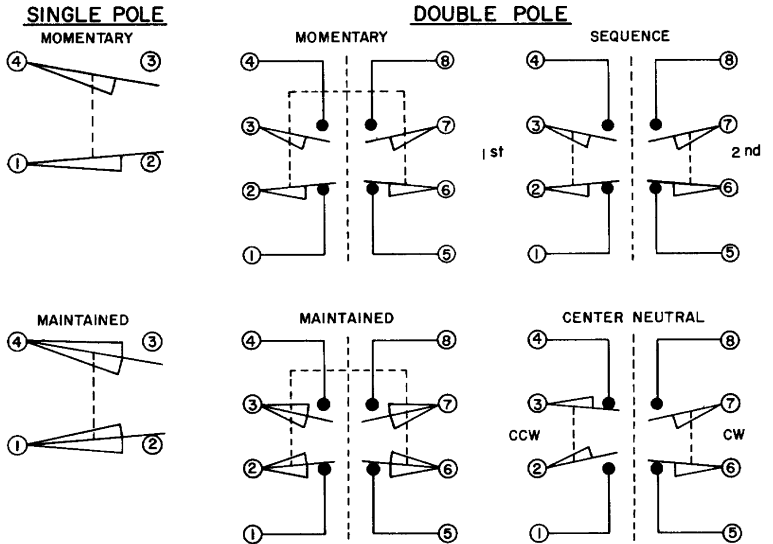
ELECTRICAL RATINGS

10 AMP CONT.

A. C. VOLTAGE	AMPS AT .35 POWER FACTOR			
	SINGLE POLE		DOUBLE POLE	
	MAKE	BREAK	MAKE	BREAK
120	60	6	30	3
240	30	3	15	1.5
480	15	1.5	7.5	.75
600	12	1.2	6	.6

D. C. VOLTAGE	MAKE & BREAK INDUCTIVE	RESISTIVE
120	0.25	0.80
240	0.15	0.40

WIRING BASIC SWITCH (SAME POLARITY MUST BE OBSERVED)



OPERATING CHARACTERISTICS	LSXA MOMENTARY		LSXR MOMENTARY LOW TORQUE		LSXN MAINTAINED	LSXP MOMENTARY LOW PRETRAVEL AND DIFF. TRAVEL		LSXH MOMENTARY LOW PRETRAVEL AND LOW TORQUE		LSXL SEQUENCE DOUBLE POLE ONLY	LSXM CENTRAL NEUTRAL DOUBLE POLE ONLY	LSXU LOW PRETRAVEL	
	Single Pole 5°	Double Pole 7°	Single Pole 5°	Double Pole 7°		Single Pole 3°	Double Pole 4°	Single Pole 3°	Double Pole 4°	1st Step 15° 2nd Step 10° Additional	18°	Single Pole 5°	Double Pole 4°
PRETRAVEL (MAX)	15°	15°			65°		9°		9°				
OVERTRAVEL (MIN)	60°	60°			20°		68°		68°	48°	57°		70°
DIFFERENTIAL TRAVEL (MAX)					40°								
TOTAL TRAVEL (REF)	75°	75°			90°		75°		75°	75°	75°		75°
OPERATING TORQUE (MAX)	4 IN. LBS	1.7 IN. LBS			4 IN. LBS		4 IN. LBS		1.7 IN. LBS	4 IN. -LBS	4 IN. - LBS.		4 IN. LBS
FULL TRAVEL TORQUE (MAX)	4 IN. LBS	1.7 IN. LBS			—		4 IN. LBS		1.7 IN. LBS	4 IN. -LBS	4 IN. - LBS		4 IN. LBS

MICRO SWITCH
 a Honeywell Division
 FID. WFO. CODE 9192

SWITCH - ENCLOSED

LSX SERIES
 CHART 1
 CATALOG LISTING
 ONE PLACE 100 1,000
 TWO PLACES 1000 1,000
 THREE PLACES 10000 1,0000

PAGE 1 OF 3

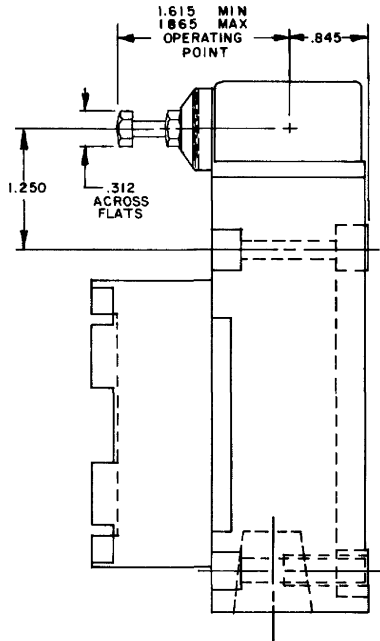
HONEYWELL
 MICRO SWITCH
 DIVISION

M
 LSX SERIES
 CHART 1
 PAGE 1 OF 3

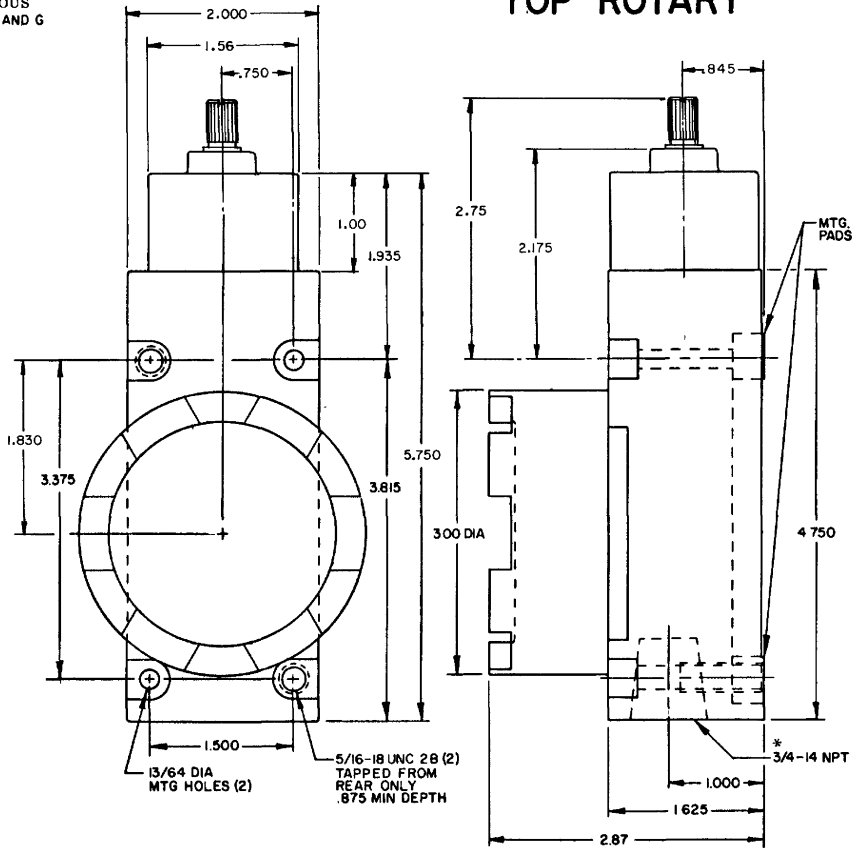
NOTE
1 - EXPLOSION PROOF-UNDERWRITERS LAB INC. LISTED FOR HAZARDOUS LOCATIONS CLASS I, GROUPS B,C, AND D; CLASS II GROUPS E,F AND G

TOP ROTARY

	SINGLE POLE	DOUBLE POLE
PRETRAVEL MAX	35°	35°
OVERTRAVEL MIN	100°	100°
DIFFERENTIAL TRAVEL MAX	8°	12°
OPERATING TORQUE MAX	2.5 IN. LBS.	2.5 IN. LBS.
TOTAL TRAVEL (REF)	135°	135°

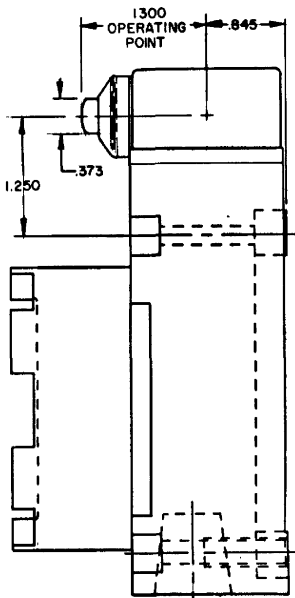


TYPE LSXW3 and LSXW4

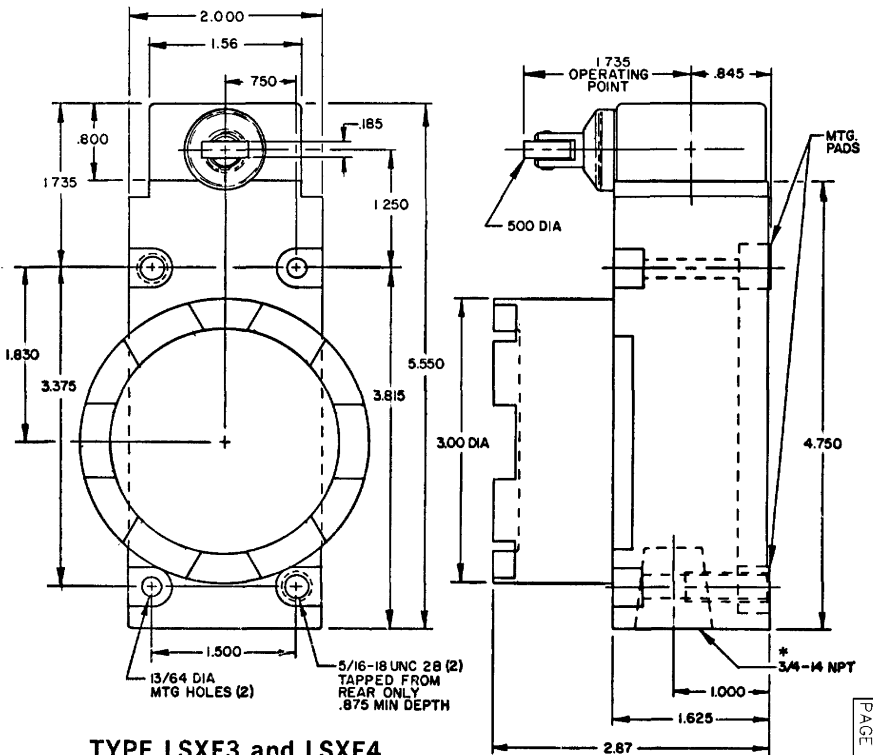


TYPE LSXB3 and LSXB4 *(LSXB3 HAS A 1/2-14 NPT CONDUIT OPENING)

SIDE PLUNGER TYPE



TYPE LSXE3 and LSXE4



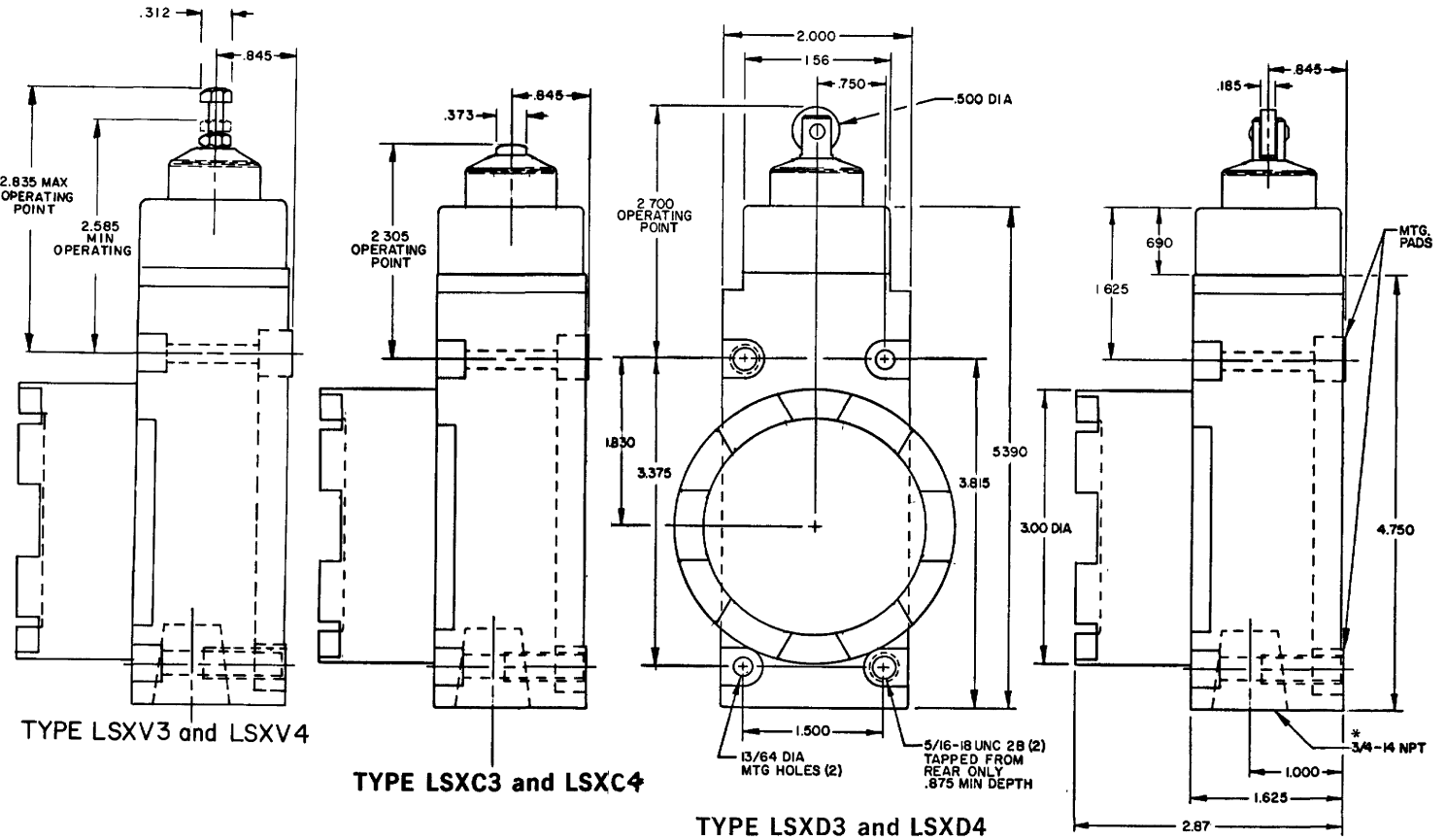
TYPE LSXF3 and LSXF4

*(LSXE3 and LSXF3 HAVE 1/2-14 NPT CONDUIT OPENINGS)

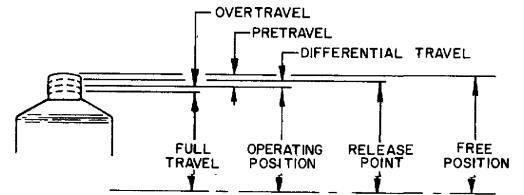
MACRO SWITCH
a Honeywell Division
THIS DRAWING COVERS A PROPRIETARY ITEM AND IS THE PROPERTY OF HONEYWELL. ITS DRAWING IS NOT TO BE COPIED OR USED WITHOUT THE APPROVAL OF HONEYWELL.
CATALOG LISTING
PAGE 2 OF 3
LSX SERIES
CHART 1

DESIGN UNIT	SCALE	THIRD ANGLE PROJECTION
DATE	DO NOT SCALE PRINT	
BY		
CHECKED		
APPROVED		
WEIGHT		

PLUNGER TYPE TOP



*(LSXC3 and LSXD3 HAVE 1/2-14 NPT CONDUIT OPENINGS)



OPERATING POINT GIVEN IN RELATION TO TOP MOUNTING HOLES

TOP PLUNGER TYPES

CHARACTERISTICS	LSXC PLUNGER		LSXD ROLLER PLUNGER		LSXV ADJUSTABLE PLUNGER		SEQUENCE BASIC LSXC LSXD LSXV
	SINGLE POLE	DOUBLE POLE	SINGLE POLE	DOUBLE POLE	SINGLE POLE	DOUBLE POLE	
PRETRAVEL (MAX)	.070		.070		.070		1ST STEP .070 2ND STEP .016 MIN ADD'L
DIFFERENTIAL TRAVEL (MAX)	.015	.020	.015	.020			.015 EACH STEP
OVERTRAVEL (MIN)	.190		.190		.190		.170
OPERATING FORCE (MAX)	4 LBS		4 LBS		4 LBS		4 LBS
OPERATING POINT	2.305 ± .030		2.700 ± .040		2.585 MIN 2.835 MAX		1ST STEP 1.815 ± .030 2.210 ± .040 2.095 MIN / 2.345 MAX
FULL OVERTRAVEL FORCE (MAX)	7 LBS		7 LBS		7 LBS		7 LBS

OPERATING POINT GIVEN IN RELATION TO CENTER OF HEAD

SIDE PLUNGER TYPES

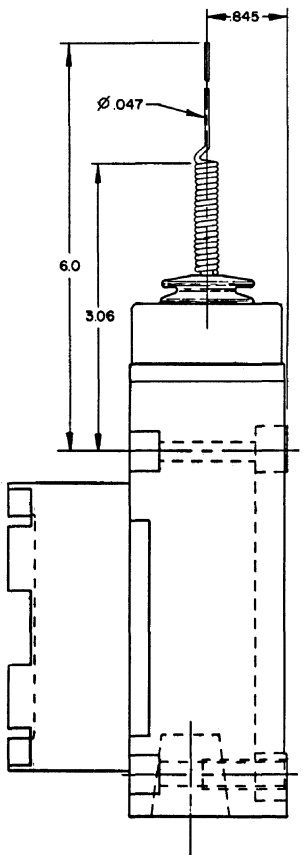
CHARACTERISTICS	LSXE PLUNGER	LSXF ROLLER PLUNGER	LSXW ADJUSTABLE PLUNGER	SEQUENCE BASIC		
				LSXE	LSXF	LSXW
PRETRAVEL (MAX)	.100	.100	.100	1ST STEP .100 2ND STEP .020 MIN ADD'L		
DIFFERENTIAL TRAVEL (MAX)	.045	.045	.045	.025 EACH STEP		
OVERTRAVEL (MIN)	.190	.190	.190	.170		
OPERATING FORCE (MAX)	6 LBS	6 LBS	6 LBS	6 LBS		
OPERATING POINT	1.300 ± .030	1.735 ± .040	1.615 MIN 1.865 MAX	1ST STEP 1.310 ± .030 1.745 ± .040 1.625 MIN / 1.875 MAX		
FULL OVERTRAVEL FORCE (MAX)	6 LBS	6 LBS	6 LBS	6 LBS		

NOTE
 1 - EXPLOSION PROOF-UNDERWRITERS LAB INC. LISTED FOR HAZARDOUS LOCATIONS CLASS I, GROUPS B,C, AND D; CLASS II GROUPS E,F AND G

MICRO SWITCH
 a Honeywell Division
 FID. NO. CODE 91929
SWITCH - ENCLOSED
 PAGE 3 OF 3
LSX SERIES
 CHART 1

M
LSX SERIES
CHART 1
 PAGE 3 OF 3

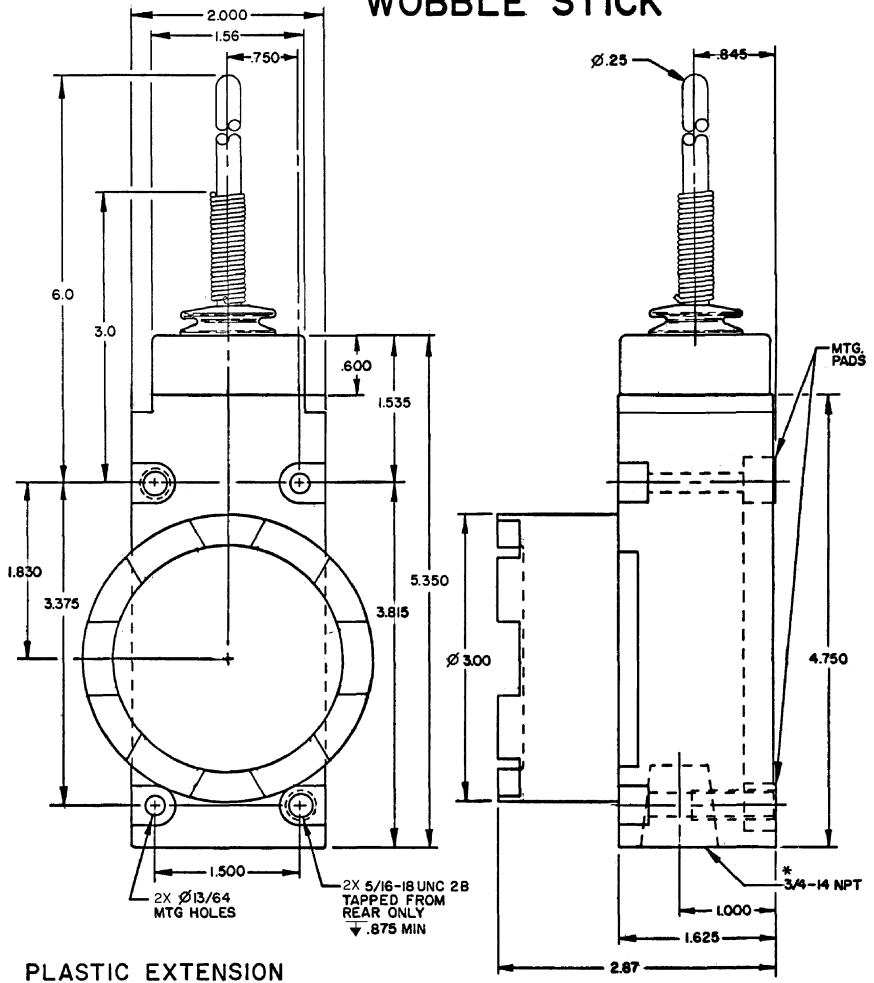
CAT WHISKER



WIRE EXTENSION
TYPE 8A ACTUATOR

TYPE LSXK3 and LSXK4
(LSXK3 HAS 1/2-14 NPT CONDUIT OPENING)
REPLACEMENT ACTUATOR
LSXZ-4012

WOBBLE STICK



PLASTIC EXTENSION
TYPE 7A ACTUATOR

TYPE LSXJ3 and LSXJ4
(LSXJ3 HAS 1/2-14 NPT CONDUIT OPENING)

REPLACEMENT ACTUATOR
LSZ-4009

NOTE
 1 - EXPLOSION PROOF-UNDERWRITERS LAB INC. LISTED FOR HAZARDOUS LOCATIONS CLASS I, GROUPS B,C, AND D; CLASS II GROUPS E,F AND G

	CAT WHISKER	WOBBLE STICK
PRETRAVEL (APPROX) IN. RADIUS	2	1.0
OPERATING FORCE - OZ (MAX)	5.0	10.0

MASTER REDUCED

MICRO SWITCH
 a Honeywell Division
 FEEL FREE TO CALL 813-939-5193

SWITCH - ENCLOSED

LSX SERIES CHART 1
 CATALOG LISTING

THIRD ANGLE PROJECTION
 DO NOT SCALE PRINT
 UNLESS OTHERWISE SPECIFIED TOLERANCES ARE
 ONE PLACE (0) ±.030
 TWO PLACES (00) ±.015
 THREE PLACES (000) ±.005
 WEIGHT