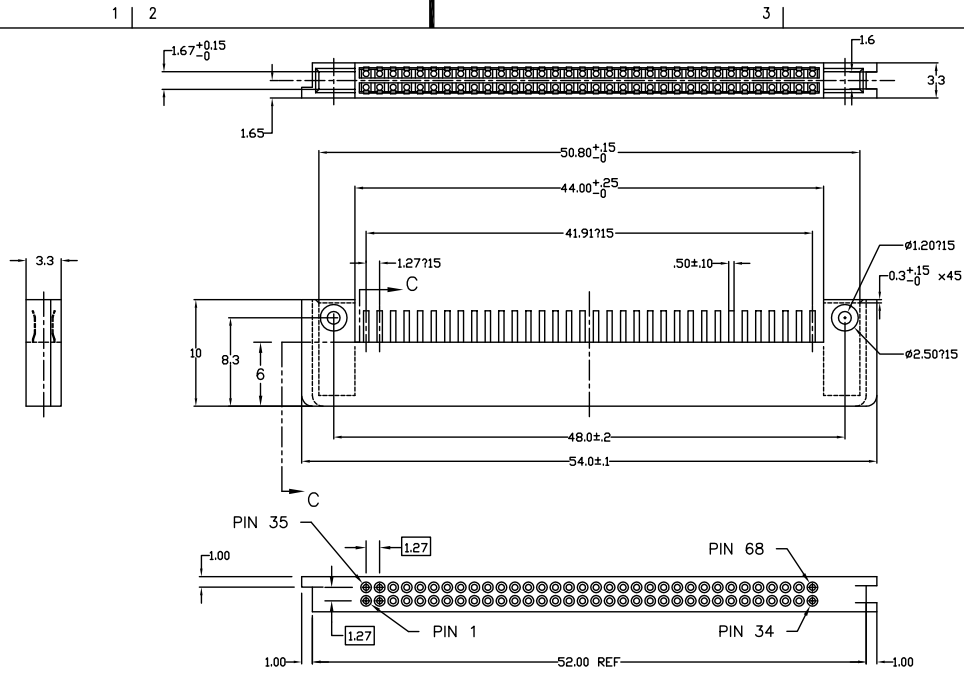


Tous droits strictement réservés. Reproduction ou communication à des fins  
interne sous quelque forme que ce soit sans autorisation écrite du propriétaire.  
Propriété de c FCI. Droits de reproduction FCI.



All rights strictly reserved. Reproduction or issue to third parties in any  
form whenever is not permitted without written authority from the proprietor.  
Property of FCI. Copyright FCI.

PRODUCT NO.
95622-003
95622-003LF
95622-004LF



NOTES:

- MATERIAL:  
CONTACT - BeCu  
PLASTIC HOUSING - GLASS REINFORCED LCP AS PER UL-94V-0  
COLOR: BLACK
- PLATING:  
CONTACT-ALL OVER 0.5µm MIN. NICKEL UNDER PLATING  
0.1µm MIN GOLD OVER 0.5µm MIN. PALLADIUM NICKEL  
SELECTIVE PLATING ON CONTACT  
2.5µm MIN. TIN/LEAD PLATING ON SOLDER TAIL(ONLY FOR 95622-003)  
LEAD FREE SOLDER TAIL PLATING 2µm(80u") MIN MATTE TIN(ONLY FOR  
95622-003LF) OR 7.6µm MIN MATTE TIN (ONLY FOR 95622-004LF )  
OVER 1.27µm(50u") MIN NICKEL UNDERPLATE.
- MATING CONNECTOR  
TO MATE WITH 68 POS. HEADER BASED ON  
JEIDA/PCMCIA SPECIFICATION
- PACKAGING SPECIFICATION: BUS-14-333  
PACKAGING OF LEAD FREE PRODUCTS MEETS LABELING  
AND PACKAGING SPECIFICATION GS-14-920.

5. PRODUCT SPECIFICATION: 110-263

mat'l. code				tolerances unless otherwise specified		CUSTOMER COPY	FCI	www.fciconnect.com
ltr	ecn no	dr	date	linear	.X ±.3	projection	title	
A	V50818	SSD	6/8/95		.XX ±.13		2 x 34 POS.PCMCIA RECEPTACLE ASSEMBLY	
B	V51445	RHG	12/20/95		.XXX ±.051		product family	PC CARD
C	V60627	RHG	4/9/96	angles	0° ±2°	MM	size	dwg no
D	V61473	RHG	10/10/96	dr	S.DUESTERHOEFT	1:1	A	95622
E	V03-1287	PJ	12/09/03	enfr	D.BRANN			213
F	V05-0791	DAI	08/22/05	chr	D.BRANN			sheet
G	pg06-0352	P.M	08/22/06	appd	D.BRANN			1 of 2
sheet index	revision sheet	G	G					
		1	2					

ACAT

PDM: Rev 3 G

STATUS: Released

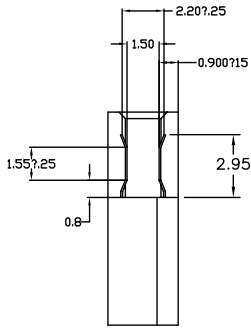
Printed: Sep 15, 2009

Tous droits strictement réservés. Reproduction ou communication à des fins  
interne sans aucune forme que ce soit sans autorisation écrite du propriétaire.  
Propriété de c FCI. Droits de reproduction FCI.

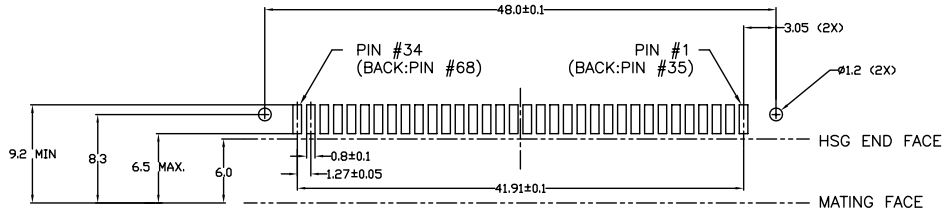


All rights strictly reserved. Reproduction or issue to third parties in any  
form whatsoever is not permitted without written authority from the proprietor.  
Property of FCI. Copyright FCI.

PRODUCT NO.
95622-003
95622-003LF
95622-004LF



SECTION C-C  
SCALE 4:1



RECOMMENDED PWB FOOTPRINT LAYOUT

LEAD FREE NOTES:

1. IF LEAD FREE PART NUMBER, THE HOUSING WILL WITHSTAND EXPOSURE TO 260°C PEAK TEMPERATURE FOR 10 SECONDS IN A WAVE SOLDER APPLICATION WITH A 1.60mm MIN THICK CIRCUIT BOARD.
2. LEAD FREE PRODUCTS MEET EUROPEAN UNION DIRECTIVES AND OTHER COUNTRY REGULATIONS AS DESCRIBED IN GS-22-008.

mat'l. code		tolerances unless otherwise specified		CUSTOMER COPY		FCI		www.fciconnect.com	
ltr	ecn no	dr	date	linear	.X ±.3	projection	title		
G					.XX ±.13		2 x 34 POS.PCMCIA RECEPTACLE ASSEMBLY		
				angles	.XXX ±.051		product family	PC CARD	code
				dr	0° ±2°	MM	size	dwg no	sheet
				enr		1:1	A	95622	213
				chr	R.GRAPE 10/11/96				2 of 2
				appd	D.BRANN 10/11/96				
sheet index	revision sheet								

1 | 2

ACAD

PDM: Rev 3 G

STATUS: Released

Printed: Sep 15, 2009