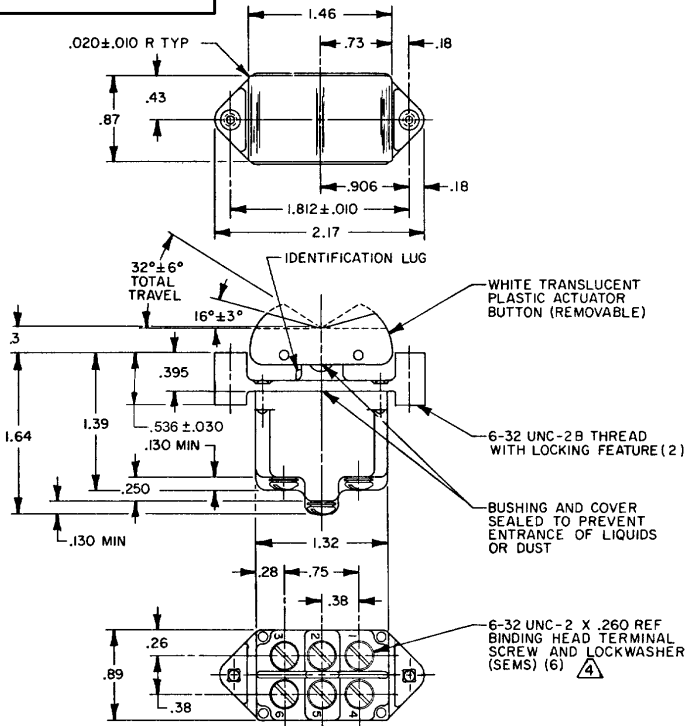


HONEYWELL
PART NUMBER
2TP201 SERIES CHART1

REV	DOCUMENT	CHANGED BY	CHECK
7	0011613	VKR 04MAR05	AK

CIRCUIT MADE WITH BUTTON DEPRESSED ON	ELECTRICAL DATA		
	LUG SIDE (1-2,4-5)	CENTER (1-2,4-5)	OPPOSITE LUG (2-3,5-6)
FAA PMA 2TP201-1	ON	OFF	ON
2TP201-2	OFF	NONE	ON
2TP201-3	ON	NONE	ON
2TP201-2I	NONE	OFF	ON
⊕	NONE	ON	ON
2TP201-4	MOM OFF	NONE	ON
2TP201-5	MOM ON	OFF	ON
2TP201-6	MOM ON	NONE	OFF
FAA PMA 2TP201-7	MOM ON	OFF	MOM ON
FAA PMA ⊕	MOM ON	NONE	ON
⊖	NONE	ON	MOM ON
2TP201-6I	MOM ON	OFF	NONE



NOTES
 1 - MICRO SWITCH CATALOG LISTING MARKED ON SIDE OF SWITCH APPLIES ONLY TO "ON" AND "MOMENTARY ON" POSITIONS
 2 - THESE SWITCHES WILL WITHSTAND TEMPERATURE OF 160°F
 3 - SCREWS FURNISHED UNASSEMBLED
 4 - FAA PMA MUST BE MARKED ON SWITCH
 5 - FOR MANUFACTURING DETAILS SEE THE CORRESPONDING ASSEMBLY DRAWING FOR EACH LISTING FOR FAA-PMA

REPLACES: 2TP201 SERIES

DESIGN UNITS: INCH
 TOLERANCES UNLESS NOTED:

NO PLACE	X	±	
ONE PLACE	.X	±	0.030
TWO PLACE	.XX	±	0.015
THREE PLACE	.XXX	±	0.005
FOUR PLACE	.XXXX	±	
ANGLES		±	

THIRD ANGLE PROJECTION

DRAWN	SM	09JUL94
CHECK	KAG	07JUL94
THIS DRAWING COVERS A PROPRIETARY ITEM AND IS THE PROPERTY OF HONEYWELL. THIS DRAWING IS NOT TO BE COPIED OR USED WITHOUT THE PERMISSION OF HONEYWELL.		
INTERPRET PER ASME Y14.5M-1994 OTHER HONEYWELL ENGINEERING STANDARDS MAY APPLY		
RASTER		

Honeywell			
TITLE SWITCH - TOGGLE FLUSH KEY			
SIZE	TYPE	DRAWING NAME	REV
A	I	2TP201 SERIES CHART1	7
SCALE	FULL	WEIGHT: .14LB EST	SHEET 1 OF 1