

# SINGLE PHASE FULL WAVE BRIDGES

T-23-07

ABSOLUTE MAXIMUM RATINGS (@25°C UNLESS OTHERWISE SPECIFIED)

Device Type	Reverse Voltage	Average Forward Current						Repetitive Surge Current	1 Cycle Surge Current tp=8.3ms	Reverse Recovery	Forward Voltage		Reverse Current		Thermal Impedance	Case Outline			
		(1)			(2)						I <sub>FRM</sub>	I <sub>FSM</sub>	T <sub>rr</sub>	V <sub>F</sub>			ϕ <sub>I</sub>	I <sub>n</sub>	I <sub>n</sub>
		55°C	100°C	125°C	25°C	55°C	100°C							@25°C				@25°C	@100°C
		Volts	Amps	Amps	Amps	Amps	Amps							Amps			Amps	nS	Volts

SET061203 <sup>A</sup>	1000	30	22	16	—	—	—	—	150	2000	1.2	2	40	—	—
SET061204 <sup>A</sup>	400	30	22	16	—	—	—	—	150	150	1.5	2	40	—	—
SET061211	150	30	20	14	—	—	—	—	175	30	—	—	—	—	—
SET061212 <sup>A</sup>	600	30	22	16	—	—	—	—	150	2000	1.2	2	40	—	—
SET061219 <sup>A</sup>	1000	20	16	12	—	—	—	—	150	150	1.2	2	40	—	—
SET061223	500	20	16	12	—	—	—	—	150	50	1.6	20	1000	—	G52
SET121203 <sup>A</sup>	1000	30	22	16	—	—	—	—	150	2000	1.2	2	40	—	—
SET121204 <sup>A</sup>	400	30	22	16	—	—	—	—	150	150	1.5	2	40	—	—
SET121211	150	30	20	14	—	—	—	—	175	30	—	—	—	—	—
SET121212 <sup>A</sup>	600	30	22	16	—	—	—	—	150	2000	1.2	2	40	—	—
SET121219 <sup>A</sup>	1000	20	16	12	—	—	—	—	150	150	1.2	2	40	—	—
SET121223	500	20	16	12	—	—	—	—	150	50	1.6	20	1000	0.75	G72
SCAJ2	200	5.0	3.5	2.5	2.0	1.5	1.1	10	50	2000	1.10	2	50	—	G24
SCAJ4	400	5.0	3.5	2.5	2.0	1.5	1.1	10	50	2000	1.10	2	50	—	G24
SCAJ6 <sup>F</sup>	600	5.0	3.5	2.5	2.0	1.5	1.1	10	50	2000	1.10	2	50	—	G24
SCAJ05F	50	4.5	3.0	2.0	1.5	1.0	0.7	—	25	150	1.20	—	—	—	—
SCAJ1F	100	4.5	3.0	2.0	—	1.0	—	—	25	150	—	—	—	—	—
SCAJ2F	200	4.5	3.0	2.0	—	1.0	—	—	25	150	—	—	—	—	—
SCAJ4F	400	4.5	3.0	2.0	—	1.0	—	—	25	150	—	—	—	—	—
SCAJ6F	600	4.5	3.0	2.0	—	1.0	—	—	25	250	1.0	—	50	—	—
SCAJ05FF	50	5.0	3.8	2.9	—	1.1	—	13	35	30	—	—	—	—	—
SCAJ10FF	100	5.0	3.8	2.9	—	1.1	—	13	35	30	1.5	—	100	—	—
SCAJ15FF	150	5.0	3.8	2.9	1.5	1.1	0.7	13	35	30	—	—	—	—	—

**NOTES:**

Operating and Storage Temperature are -55°C to +150°C unless otherwise indicated.

(A) Operating and Storage Temperature -55°C to +175°C.

(F) Available in Europe to F and FX levels.

(1) Ratings at Case Temperature T<sub>c</sub>.

(2) Ratings at Ambient Temperature T<sub>a</sub>.

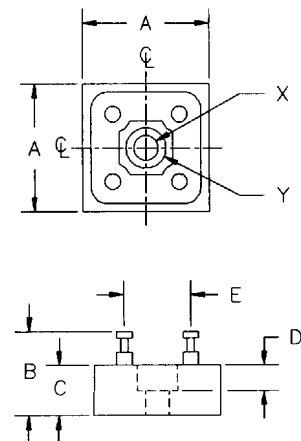
(3) Measured on discrete devices prior to assembly.

G28

DIM <sup>n</sup>	DIMENSIONS				NOTE
	MM		INCHES		
	MIN	MAX	MIN	MAX	
A	18.7	19.4	.735	.765	—
B	—	12.7	—	.50	—
C	—	7.6	—	.30	—
D	3.4	4.2	.135	.165	—
E	9.6	10.7	.38	.42	—
X	3.4	4.1	.132	.165	DIA
Y	5.6	6.4	.22	.25	DIA

**NOTES:**

1. TERMINAL IDENTIFICATION MARKED ON CASE

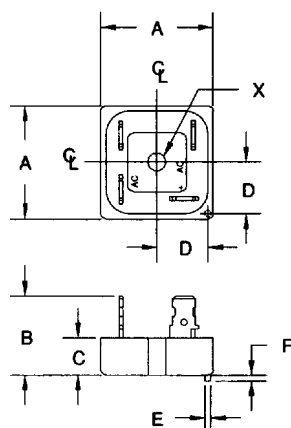


G29

DIM <sup>n</sup>	DIMENSIONS				NOTE
	MM		INCHES		
	MIN	MAX	MIN	MAX	
A	28.1	28.6	1.11	1.14	—
B	—	25.4	—	1.00	—
C	—	10.6	—	.416	—
D	12.4	13.0	.49	.51	—
E	1.3	1.8	.052	.072	DIA
F	—	1.6	—	.062	—
X	4.6	5.4	.183	.213	DIA

**NOTES:**

1. TERMINALS SUITABLE FOR .25" "FASTON" OR SOLDERING.



G30A

DIM <sup>n</sup>	DIMENSIONS				NOTE
	MM		INCHES		
	MIN	MAX	MIN	MAX	
A	—	51.6	—	2.03	—
B	—	26.2	—	1.03	—
C	—	16.8	—	.66	—
D	—	30.5	—	1.20	—
E	37.8	38.4	1.49	1.51	—
F	6.4	—	.25	—	—
X	—	—	—	—	10-32 UNF
Y	3.6	5.1	.14	.20	DIA

