

4

3

2

1

REV.	DATE	DESCRIPTION	BY	C.K'D.
1	9-24-92	ADDED 'TP' TO CAT. NO'S. AND STRIP LENGTH COLUMN FOR PCB SIZES	RER	DGF
2	4/21/93	ADDED FIG. 2A & NOTES. CHANGED TEXT IN TABLE TO MATCH DWG. # CSC 31888 (PCN 1218)	JLM	DCF

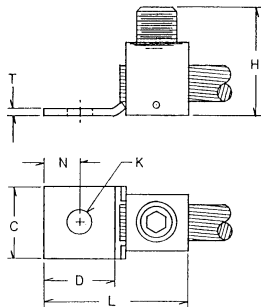


FIG. 1

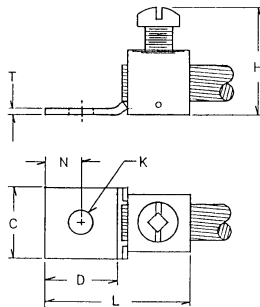


FIG. 2

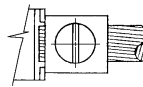


FIG. 2A

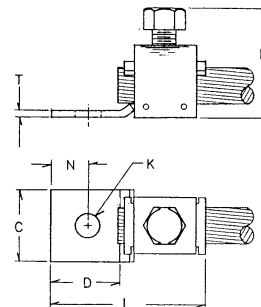


FIG. 3

CATALOG NUMBER	CONDUCTOR	FIG. NO.	C	D	REF. H	K	L	N	T	RECOMMENDED TIGHTENING TORQUE IN LBS.	HARDWARE	STUD HOLE SIZE	QUANTITY / PACKAGE	STRIP LENGTH
KPA8CUP	14 SOL 1.63(.064) DIA. TO 6 STR 4.67(.184) DIA. CU	2A	9.4	14.2	21.0	5.1	26.4	5.6	1.8	4 NM (35 IN. LBS.)	#12-24 SLOT	#10	100	15/32
KPA8CTP	6 STR 4.67(.184) DIA. CU		.38	.56	.81	.20	1.04	.22	.07					
KPA4CUP	14 SOL 1.63(.064) DIA. TO 4 STR 5.89(.232) DIA. CU		12.7	18.0	25.0	7.1	32.5	8.3	1.8	5.1 NM (45 IN. LBS.)	5/16 DIA. SLOT ROBERTSON	1/4	100	9/16
KPA4CTP	4 STR 5.89(.232) DIA. CU		.50	.71	1.0	.28	1.28	.33	.07					
KPA25UP	6 STR 4.67(.184) DIA. TO 1/0 STR 9.44(.372) DIA. CU	2	15.7	20.6	35.0	8.4	39.6	11.4	3.2	5.6 NM (50 IN. LBS.)	3/8 DIA. SLOT ROBERTSON	5/16	100	3/4
KPA25TP	1/0 STR 9.44(.372) DIA. CU		.62	.81	1.37	.33	1.56	.45	.12					
KPA28UP	6 STR 4.67(.184) DIA. TO 4/0 STR 13.4(.528) DIA. CU	1	25.4	27.9	39.0	10.4	56.4	14.5	3.2	28 NM (250 IN. LBS.)	9/16 DIA. HEX SOCKET	3/8	25	1 1/8
KPA28TP	4/0 STR 13.4(.528) DIA. CU		1.0	1.10	1.55	.41	2.22	.57	.12					
KPA34UP	2/0 STR 10.6(.419) DIA. TO 500 MCM 20.7(.813) DIA. CU	3	38.1	42.4	67.0	13.5	85.6	22.4	4.6	42.4 NM (375 IN. LBS.)	5/8 DIA. HEX. HEAD	1/2	18	1 11/16
KPA34TP	500 MCM 20.7(.813) DIA. CU		1.50	1.67	2.64	.53	3.37	.88	.18					

NOTES:

- ▽ FINGER TIGHT TORQUE WITH MAXIMUM CONDUCTOR.
- ▽ SUFFIX "TP" ON CATALOG NUMBER DENOTES TIN PLATE. EXAMPLE: KPA8CTP
- ▽ SUFFIX "UP" DENOTES UNPLATED.
- 3 MATERIAL: COPPER ALLOY.
- ▽ N DIMENSION FOR KPA8C___ CONNECTORS NOT TO EXCEED .240 IN.

SCRULUG		SCALE
CAT NO: KPA	TABLE	None
DRAWN: ISG 1/21/92	INCHES: KH 1/23/92	
DESIGN APPL: GP 3/10/92	MFG APPL: LR 1/24/92	
D.A. APPL: AL 1/27/92	WRG APPL: LH 1/28/92	
CAD FILE: N/A	PH REF: N/A	
	REL REF: N/A	
U.S. ELECTRICAL DIVISION MANCHESTER, NH 03108		
DRAWING NO.	SD207546	REV
SHEET	1	OF 1

4

3

2

1

REV. 111991