

This document is the property of Amphenol Corporation and is delivered on the express condition that it is not to be distributed, reproduced or used in whole or in part for any purpose other than that for which it was originally prepared for without the express written consent of Amphenol Corporation.

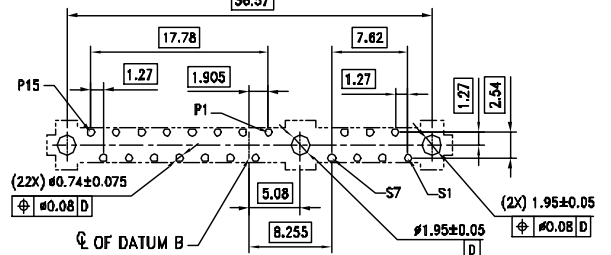
REVISIONS				
SYM	ECN	DESCRIPTION	DATE	APPROVED
B	HFC130	REVISED Material Handling Thermoplastic With Material Number P2A 226 glass filled	8/28/04	IP

CUSTOMER DRAWING

- NOTES:
1. MATERIAL HOUSING : THERMOPLASTIC, UL94V-0
COLOR: BLACK
CONTACT: PHOSPHOR BRONZE
PLATING: UNDER PLATING WITH NICKEL
OVER PLATING WITH GOLD ON MATING AREA
GOLD PLATING THICKNESS REFER TO P/N SYSTEM
TIN/LEAD PLATING ON TERMINAL
 2. ELECTRICAL SPECIFICATION: OPERATION VOLTAGE: 100 V AC MAX.
CURRENT RATING: 1.5A PER CONTACT
CONTACT RESISTANCE: 30 MILLIOHMS MAX.
INSULATOR RESISTANCE: 1000 MEGOHMS MIN.
DIELECTRIC WITHSTANDING VOLTAGE: 500 V AC
 3. MATERIAL SHOULD BE FULFILLED AMPHENOL SPEC# SSN001.

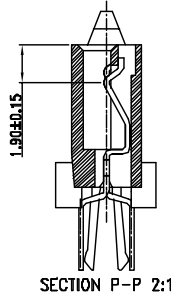
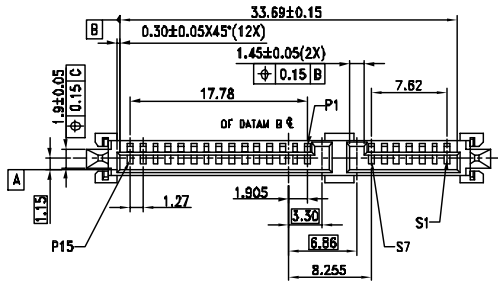
4. PREMATING AT P4 & P12
5. RECOMMENDED PCB THICKNESS 2.35±0.15
6. ORDER P/N SYSTEM: SATA-112-014-X

MATING AREA PLATING
1-Au 0.76um MIN.
2-Au 0.38um MIN.
A-Au FLASH 3u'

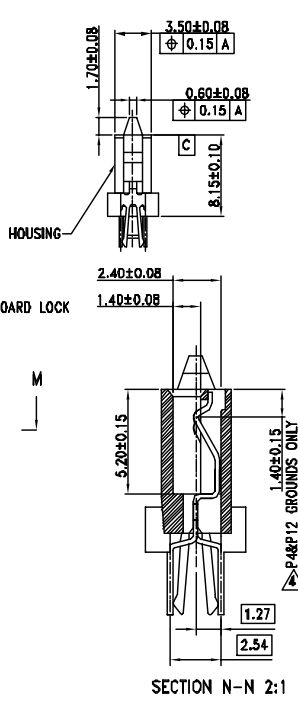
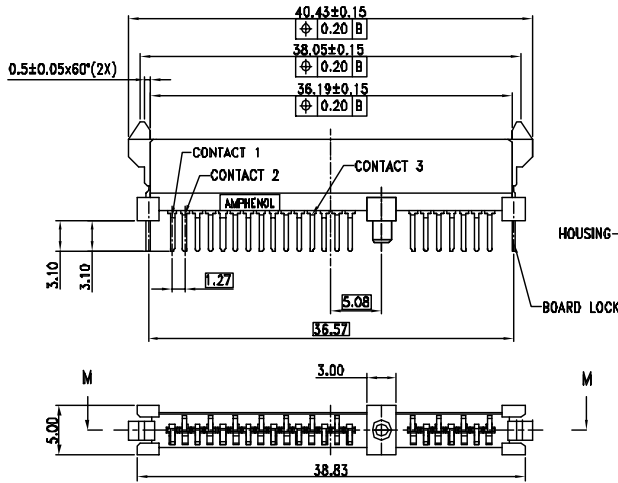


RECOMMENDED PCB LAYOUT

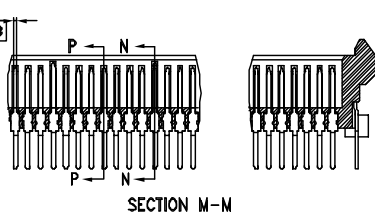
ITEM NO	PART IDENTIFICATION NO	MANUFACTURE OR DESCRIPTION	QTY REQ'D
PARTS LIST			
UNLESS OTHERWISE SPECIFIED TOLERANCES		APPROVAL	DATE
U.S. METRIC		DRAWN	YSD/RS 8/28/04
.X +/- 0.25		CHECKED	YSD/RS 8/28/04
.001 +/- 0.1		CHECKED	
FRACTIONS +/- 0.1		DRAWING FILE : SATA/CSATA112014.DWG	
ANGLES +/- 0.1		TITLE	
REMOVE SHARP EDGES		SATA 7+15P 2IN1 FEMALE	
ANGLE OF PROJECTION		SIZE DRAWING NO.	
FIRST ANGLE		A3 C-SATA-112-014-X	
SCALE		NONE	
SHEET 1 OF 1		REV. B	



SECTION P-P 2:1



SECTION N-N 2:1



SECTION M-M