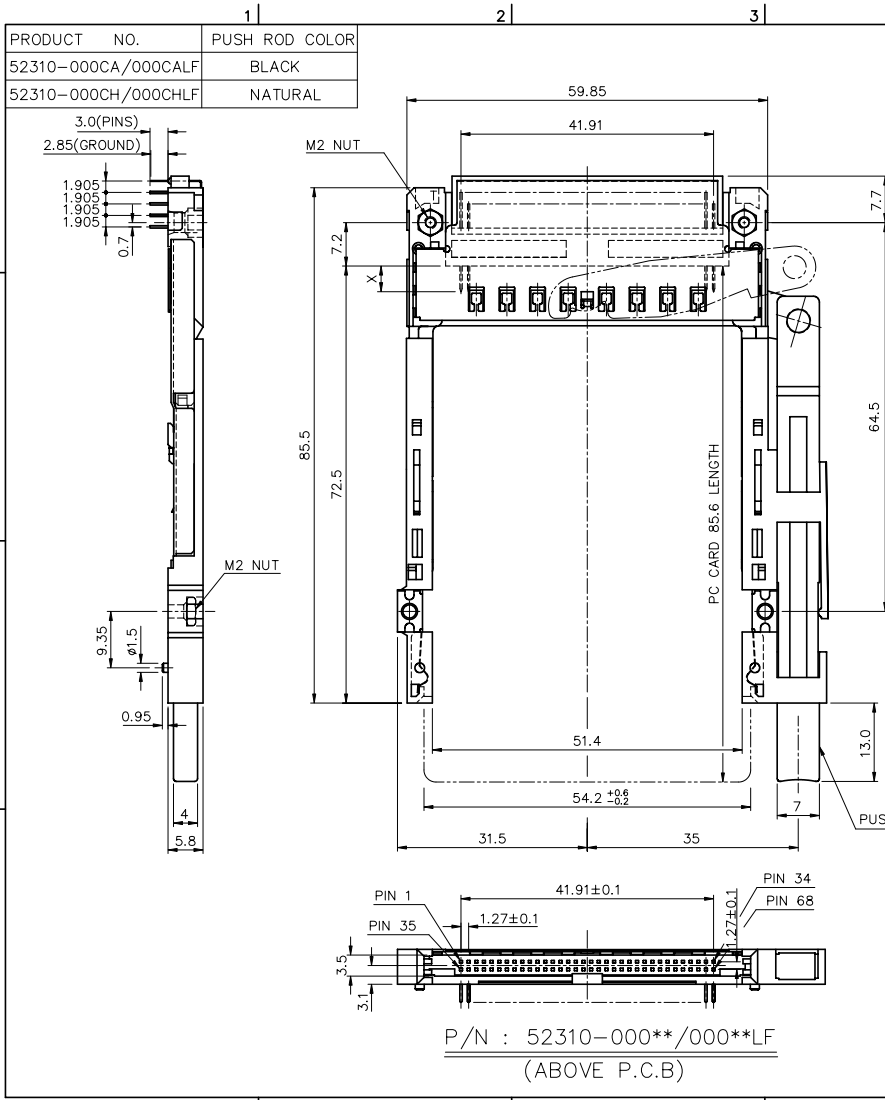


Tous droits strictement réservés. Toute réimpression ou communication sans la signature de BERG ELECTRONICS est formellement interdite.
 All rights strictly reserved. Reproduction or issues to third parties in any form without the written authority from the proprietor.
 Copyright BERG ELECTRONICS by



NOTES:

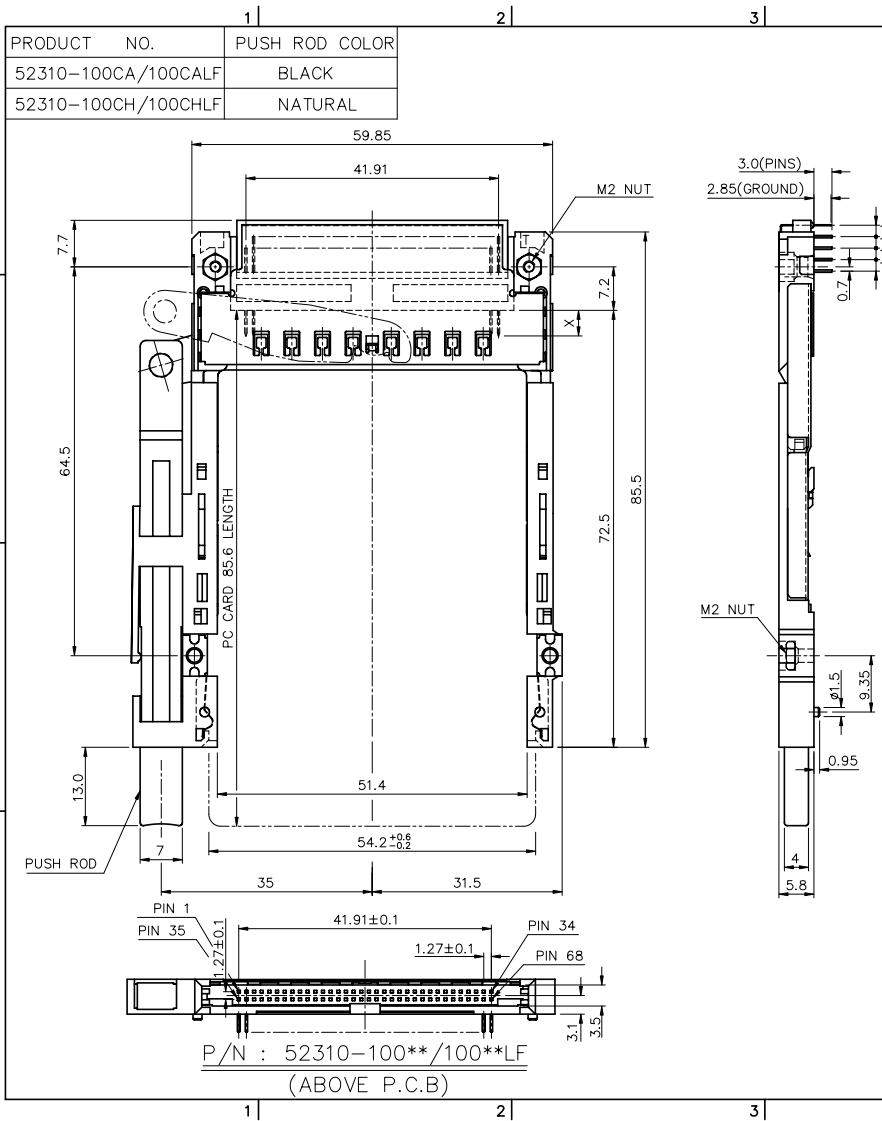
- 4.0mm MIN CARD EJECT.
- MATERIAL:
 - 2.1 EJECT HEADER ASS'Y
 - PLASTIC HOUSING: LCP UL94V-0 BLACK
 - PIN: COPPER ALLOY
 - GROUND SHIELD: PHOSPHOR BRONZE
 - PLASTIC GUIDE: POLYPHTHARAMID UL94V-0 BLACK
 - PLATE: STAINLESS
 - EMI CONTACT: PHOSPHOR BRONZE
- FINISH
 - PIN :
 - UNDER PLATING: 0.5um MIN. Ni
 - CONTACT AREA: 0.1um MIN. GOLD OVER 0.5um MIN. Pd-Ni
 - SOLDER TAIL(TIN LEAD OPTION): 2.5um MIN. Sn-Pb
 - SOLDER TAIL(LEAD FREE OPTION): 2.5um MIN. PURE TIN
 - GROUND SHIELD :
 - UNDER PLATING: 0.75um MIN. Ni
 - CONTACT SURFACE: 0.03um GOLD MIN. OVER PdNi 0.5um MIN.(GOLD FLASH DOUBLE SIDES) OR, 0.38um GOLD(ONE SIDE ONLY)
- PUSH ROD LOCATION AND P.C.B. ARE AS APPEARS INSTALLED
- DIM "X"

4.25±0.1	3.5±0.1	5.0±0.1
OTHERS	36,67	1,17,34,35,51,68
- DO NOT TOUCH AND KEEP CLEAN THE SURFACES OF PCB OF HEADER ASS'Y.
- IF LEAD FREE P/N. THE HOUSING WILL WITHSTAND EXPOSURE TO 260°C PEAK TEMPERATURE FOR 10 SECONDS IN A WAVE SOLDER APPLICATION WITH A 1.00MM MINIMUM THICK CIRCUIT BOARD.
- LEAD FREE PRODUCT MEETS EUROPEAN UNION DIRECTIVES AND OTHER COUNTRY REGULATIONS AS DISCRIBLED IN GS-22-008
- IF LEAD FREE P/N. PACKAGING MEETS GS-14-920 SPECIFICATION

mat'l code		tolerance unless otherwise specified		CUSTOMER COPY		FCI ELECTRONICS	
rev.	ecn no.	dr	date	linear	± 0.30	projection	title
A	T90236	WL	06/30/99	angles	± 2°		R/A CARDBUS HEADER SINGLE DECK ASS'Y
B	T90295	WL	08/09/99	dr	WENDY CHEN 05/05/99	unit	product family : PGMIA
C	N040105	WB	11/28/04	engr	JOSEPH HSIA 05/05/99	mm/inch	size
				chr	JOSEPH HSIA 05/05/99	scale	dwg no.
				appd	JENN TSAO 05/05/99	1.5:1	A3 52310
sheet	revision	C	C	C	C	A	
index	sheet	1	2	3	4	5	
							code
							TWN
							sheet
							1 of 5

Tous droits strictement réservés. Toute réimpression ou communication sans l'avis écrit du propriétaire. Property of BERG ELECTRONICS. All rights strictly reserved. Reproduction or communication without written authority from the proprietor. Copyright BERG ELECTRONICS by

All rights strictly reserved. Reproduction or communication without written authority from the proprietor. Property of BERG ELECTRONICS. All rights strictly reserved. Reproduction or communication without written authority from the proprietor. Copyright BERG ELECTRONICS by



- NOTES:
- 4.0mm MIN CARD EJECT.
 - MATERIAL:
 - EJECT HEADER ASS'Y
 - PLASTIC HOUSING: LCP UL94V-0 BLACK
 - PIN: COPPER ALLOY
 - GROUND SHIELD: PHOSPHOR BRONZE
 - PLASTIC GUIDE: POLYPHTHARAMID UL94V-0 BLACK
 - PLATE: STAINLESS
 - EMI CONTACT: PHOSPHOR BRONZE
 - FINISH
 - PIN :
 - UNDER PLATING: 0.5um MIN. Ni
 - CONTACT AREA: 0.1um MIN. GOLD OVER
 - 0.5um MIN. Pd-Ni
 - SOLDER TAIL(TIN LEAD OPTION): 2.5um MIN. Sn-Pb
 - SOLDER TAIL(LEAD FREE OPTION): 2.5um MIN. PURE TIN
 - GROUND SHIELD :
 - UNDER PLATING: 0.75um MIN. Ni
 - CONTACT SURFACE: 0.03um GOLD MIN. OVER PdNi 0.5um MIN.(GOLD FLASH DOUBLE SIDES) OR, 0.38um GOLD(ONE SIDE ONLY)
 - PUSH ROD LOCATION AND P.C.B. ARE AS APPEARS INSTALLED
 - DIM "X"

4.25±0.1	3.5±0.1	5.0±0.1
OTHERS	36,67	1,17,34,35,51,68
 - DO NOT TOUCH AND KEEP CLEAN THE SURFACES OF PCB OF HEADER ASS'Y.
 - IF LEAD FREE P/N. THE HOUSING WILL WITHSTAND EXPOSURE TO 260°C PEAK TEMPERATURE FOR 10 SECONDS IN A WAVE SOLDER APPLICATION WITH A 1.00MM MINIMUM THICK CIRCUIT BOARD.
 - LEAD FREE PRODUCT MEETS EUROPEAN UNION DIRECTIVES AND OTHER COUNTRY REGULATIONS AS DISCRIBLED IN GS-22-008
 - IF LEAD FREE P/N. PACKAGING MEETS GS-14-920 SPECIFICATION

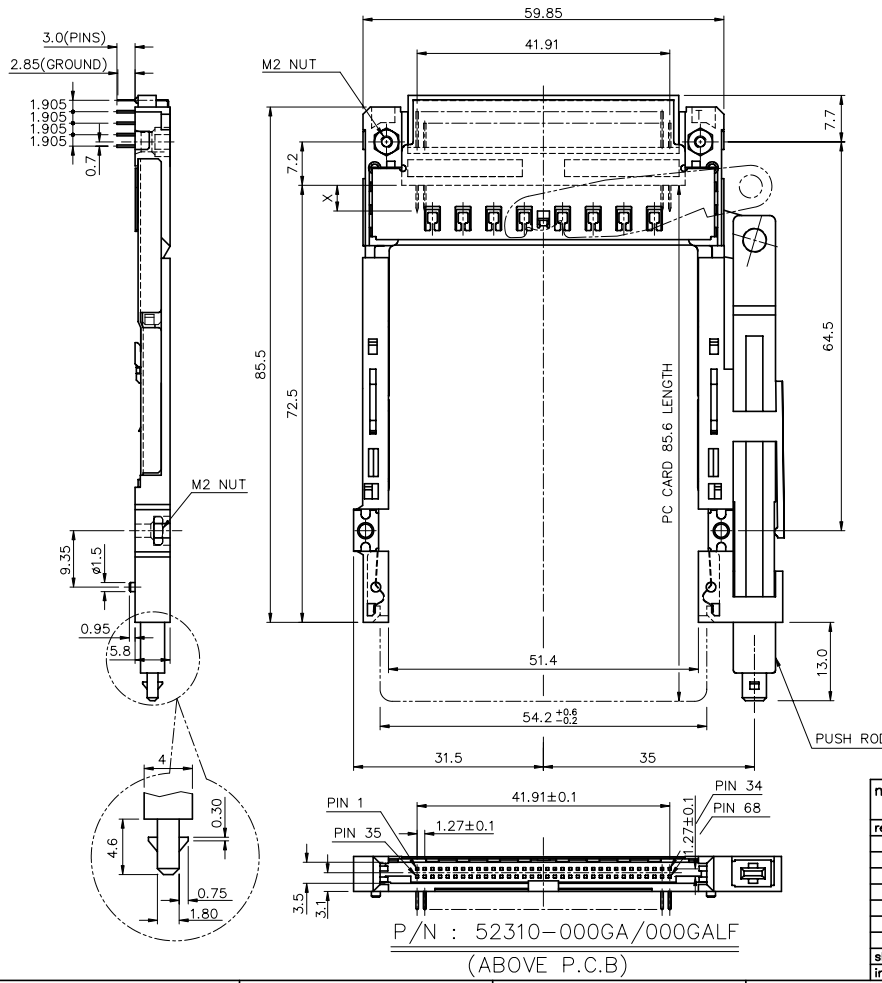
mat'l code		tolerance unless otherwise specified		CUSTOMER COPY		FCI ELECTRONICS	
rev.	ecn no.	dr	date	linear	± 0.30	projection	title
				angles	± 2°		R/A CARDBUS HEADER SINGLE DECK ASS'Y
				dr	WENDY CHEN 05/05/99	unit	product family : PCMCIA
				engr	JOSEPH HSIA 05/05/99	mm/inch	size
				chr	JOSEPH HSIA 05/05/99	scale	dwg no.
				appd	JENN TSAO 05/05/99	1.5:1	A3 52310
sheet	revision						code
index	sheet						TWN
							sheet
							2 of

PRODUCT NO.	PUSH ROD COLOR
52310-000GA/000GALF	BLACK

NOTES:

- 4.0mm MIN CARD EJECT.
- MATERIAL:
 - EJECT HEADER ASS'Y
 - PLASTIC HOUSING: LCP UL94V-0 BLACK
 - PIN: COPPER ALLOY
 - GROUND SHIELD: PHOSPHOR BRONZE
 - PLASTIC GUIDE: POLYPHTHARAMID UL94V-0 BLACK
 - PLATE: STAINLESS
 - EMI CONTACT: PHOSPHOR BRONZE
- FINISH
 - PIN :
 - UNDER PLATING: 0.5um MIN. Ni
 - CONTACT AREA: 0.1um MIN. GOLD OVER 0.5um MIN. Pd-Ni
 - SOLDER TAIL(TIN LEAD OPTION): 2.5um MIN. Sn-Pb
 - SOLDER TAIL(LEAD FREE OPTION): 2.5um MIN. PURE TIN
 - GROUND SHIELD :
 - UNDER PLATING: 0.75um MIN. Ni
 - CONTACT SURFACE: 0.03um GOLD MIN. OVER PdNi 0.5um MIN.(GOLD FLASH DOUBLE SIDES) OR, 0.38um GOLD(ONE SIDE ONLY)
- PUSH ROD LOCATION AND P.C.B. ARE AS APPEARS INSTALLED
- DIM "X"

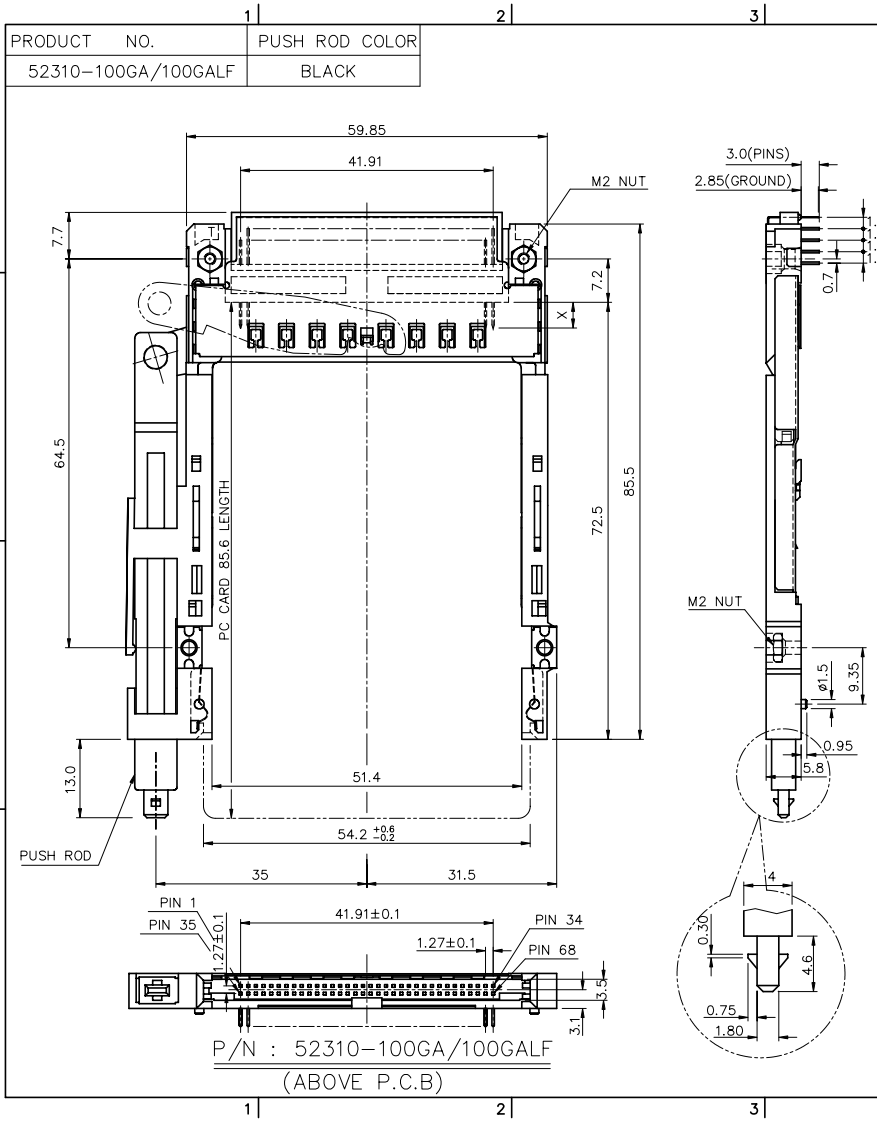
4.25±0.1	3.5±0.1	5.0±0.1
OTHERS	36,67	1,17,34,35,51,68
- DO NOT TOUCH AND KEEP CLEAN THE SURFACES OF PCB OF HEADER ASS'Y.
- IF LEAD FREE P/N. THE HOUSING WILL WITHSTAND EXPOSURE TO 260°C PEAK TEMPERATURE FOR 10 SECONDS IN A WAVE SOLDER APPLICATION WITH A 1.00MM MINIMUM THICK CIRCUIT BOARD.
- LEAD FREE PRODUCT MEETS EUROPEAN UNION DIRECTIVES AND OTHER COUNTRY REGULATIONS AS DISCRIBED IN GS-22-008
- IF LEAD FREE P/N. PACKAGING MEETS GS-14-920 SPECIFICATION



mat'l code		tolerance unless otherwise specified		CUSTOMER COPY		ELECTRONICS	
rev.	ecn no.	dr	date	linear	± 0.30	projection	title
C				angles	± 2°		R/A CARDBUS HEADER SINGLE DECK ASS'Y
				dr	WENDY CHEN 05/05/99	unit	product family : PCMCIA
				engr	JOSEPH HSIAO 05/05/99	mm/inch	size
				chr	JOSEPH HSIAO 05/05/99	scale	1.5:1
				appd	JENN TSAO 05/05/99	A3	52310
sheet	revision						code
index	sheet						TWN
							sheet
							3 of

Tous droits réservés. Toute réimpression ou communication à des tiers sans la permission écrite du propriétaire. Copyright BERG ELECTRONICS

All rights strictly reserved. Reproduction or issues to third parties in any form without the written authority from the proprietor. Copyright BERG ELECTRONICS



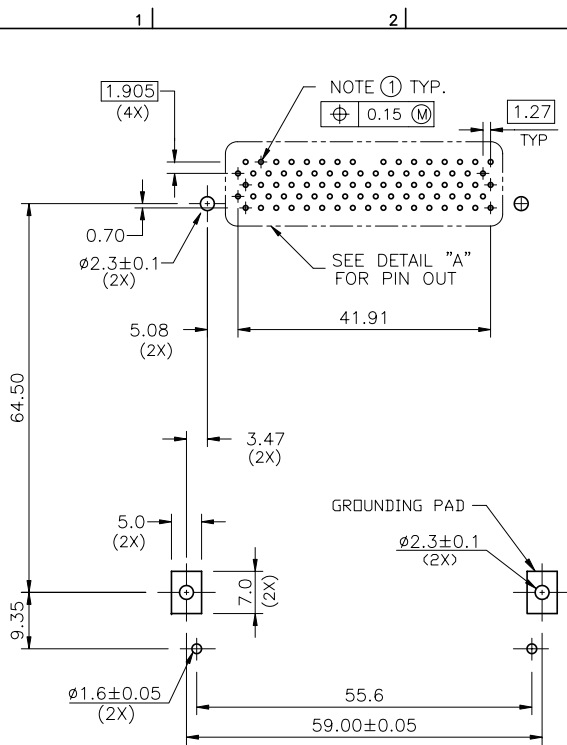
- PRODUCT NO. 52310-100GA/100GALF
 PUSH ROD COLOR BLACK
- NOTES:
- 4.0mm MIN CARD EJECT.
 - MATERIAL:
 - 2.1 EJECT HEADER ASS'Y
 - PLASTIC HOUSING: LCP UL94V-0 BLACK
 - PIN: COPPER ALLOY
 - GROUND SHIELD: PHOSPHOR BRONZE
 - PLASTIC GUIDE: POLYPHTHARAMID UL94V-0 BLACK
 - PLATE: STAINLESS
 - EMI CONTACT: PHOSPHOR BRONZE
 - FINISH
 - PIN :
 - UNDER PLATING: 0.5um MIN. Ni
 - CONTACT AREA: 0.1um MIN. GOLD OVER
 - 0.5um MIN. Pd-Ni
 - SOLDER TAIL(TIN LEAD OPTION): 2.5um MIN. Sn-Pb
 - SOLDER TAIL(LEAD FREE OPTION): 2.5um MIN. PURE TIN
 - GROUND SHIELD :
 - UNDER PLATING: 0.75um MIN. Ni
 - CONTACT SURFACE: 0.03um GOLD MIN. OVER PdNi
 - 0.5um MIN.(GOLD FLASH DOUBLE SIDES)
 - OR, 0.38um GOLD(ONE SIDE ONLY)
 - PUSH ROD LOCATION AND P.C.B. ARE AS APPEARS INSTALLED
 - DIM "X"

4.25±0.1	3.5±0.1	5.0±0.1
OTHERS	36,67	1,17,34,35,51,68
 - DO NOT TOUCH AND KEEP CLEAN THE SURFACES OF PCB OF HEADER ASS'Y.
 - IF LEAD FREE P/N. THE HOUSING WILL WITHSTAND EXPOSURE TO 260°C PEAK TEMPERATURE FOR 10 SECONDS IN A WAVE SOLDER APPLICATION WITH A 1.00MM MINIMUM THICK CIRCUIT BOARD.
 - LEAD FREE PRODUCT MEETS EUROPEAN UNION DIRECTIVES AND OTHER COUNTRY REGULATIONS AS DISCRIBED IN GS-22-008
 - IF LEAD FREE P/N. PACKAGING MEETS GS-14-920 SPECIFICATION

mat'l code		tolerance unless otherwise specified		CUSTOMER COPY		ELECTRONICS FCI	
rev.	ecn no.	dr	date	linear	± 0.30	projection	title
B				angles	± 2°		R/A CARDBUS HEADER SINGLE DECK ASS'Y
				dr	WENDY CHEN 05/05/99	unit	product family : PGMQIA
				engr	JOSEPH HSIAO 05/05/99	nm/inch	size
				chr	JOSEPH HSIAO 05/05/99	scale	dwg no.
				appd	JENN TSAO 05/05/99	1.5:1	A3 52310
sheet	revision						code
index	sheet						TWN
							sheet
							4 of

Tous droits strictement réservés. Toute réimpression, reproduction ou communication à des tiers sans autorisation écrite du propriétaire. Property of BERG ELECTRONICS. All rights reserved. Reproduction or communication to third parties without written authority from the proprietor. Copyright BERG ELECTRONICS by

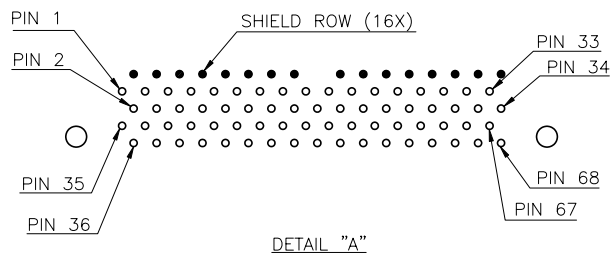
All rights strictly reserved. Reproduction or issue to third parties in any form without the written authority of BERG ELECTRONICS. Property of BERG ELECTRONICS. All rights reserved. Reproduction or communication to third parties without written authority from the proprietor. Copyright BERG ELECTRONICS by



P.C.B. LAYOUT

NOTES:

- ① RECOMMENDED DIAMETER IS $\varnothing 1.0$. FOR PROCESSES USING PASTE REFLOW, HOLE MAY BE AS SMALL AS $\varnothing 0.79$.
- 2 ALL TOLERANCES ± 0.15 UNLESS NOTED.



mat'l code		tolerance unless otherwise specified		CUSTOMER	ELECTRONICS	
rev.	ecn no.	dr	date	COPY	FCI	
A				linear	± 0.1	projection
				angles	$\pm 2'$	title
				dr	WENDY CHEN 05/05/99	unit
				enrg	JOSEPH HSIANG 05/05/99	mm/inch
				chr	JOSEPH HSIANG 05/05/99	scale
				appd	JENN TSAO 05/05/99	1.5:1
sheet	revision			product family : PCMCIA	code	TWN
index	sheet			size	dwg no.	sheet
				A3	52310	5 of

PDM: Rev:C STATUS: Released Printed: Oct 12, 2010 6