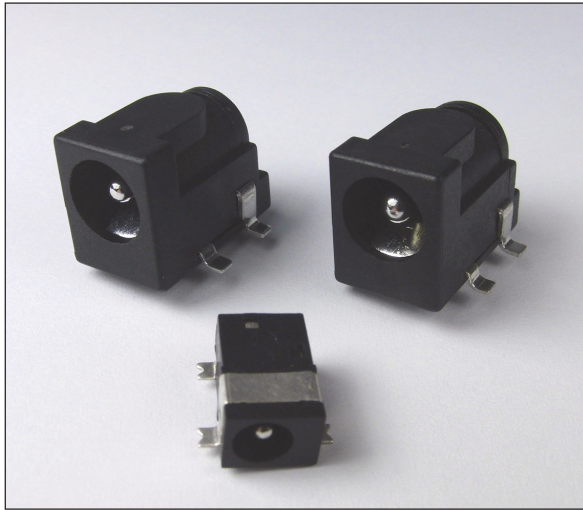




## SMD DC SOCKETS



Designed for surface mounting assembly. Available as discrete or taped / reeled parts. Characteristics are similar to our versions with through hole legs. Supplied loose (STD) or taped in 1000 / Reel (to order).

### Specification (All models)

Insertion / Withdrawal force: 0.3 - 2.0 kgf

Contact Resistance:

(4 terminal method 1KHz @ <100mA)

Initial - Plug / Contact <50mΩ

Contact / Shunt <30mΩ

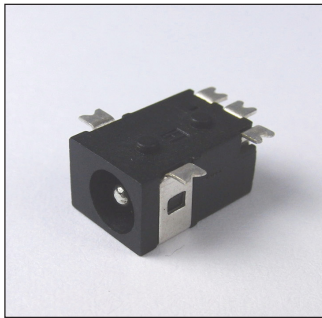
After life test - Plug / Contact <100mΩ

Contact / Shunt <60mΩ

Electrical Rating: DC10 - 2A / 12V

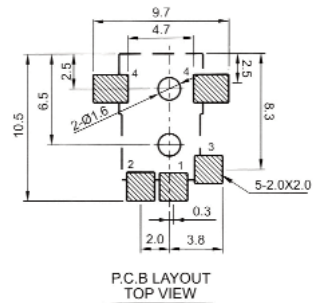
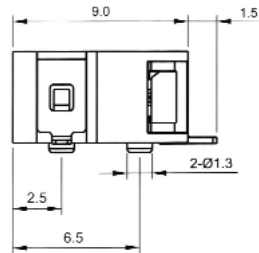
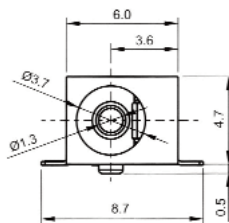
DC8 - 1A / 12V

### DC-8S 1.3mm Pin



### Part No. FC68145S

### Taped FC68145ST



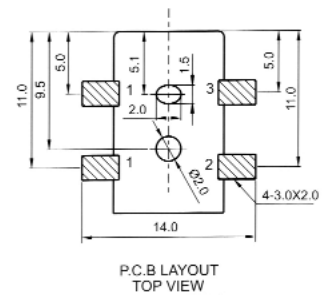
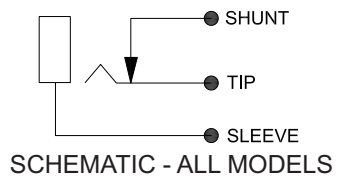
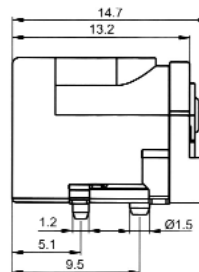
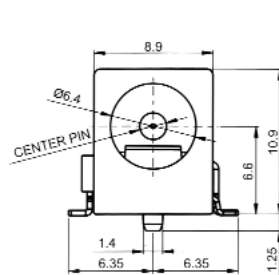
### DC-10AS 2.1mm Pin DC-10BS 2.5mm Pin



### Part No. FC68148S

### Part No. FC68149S

### Add Suffix 'T' for taped.



© CLIFF 03/11

For further information, contact: [sales@cliffuk.co.uk](mailto:sales@cliffuk.co.uk)

**Cliff Electronic Components Limited,**  
76 Holmethorpe Avenue, Holmethorpe Ind. Estate,  
Redhill, Surrey RH1 2PF U.K.  
Tel: +44 (0)1737 771375 Fax: +44 (0)1737 766012



Visit us online at:

[www.cliffuk.co.uk](http://www.cliffuk.co.uk)