

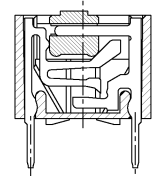
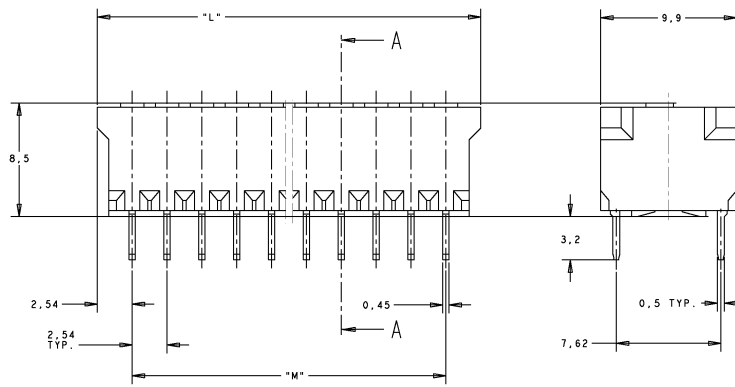
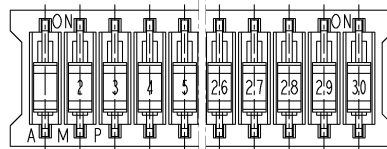
NUMBER OF POS.	PART NUMBER	PACK	"L" MAX.	"M"
1	0-5161390-1	2000	5,08	-
2	0-5161390-2	1000	7,62	2,54
3	0-5161390-3	1000	10,16	5,08
4	0-5161390-4	1000	12,70	7,62
5	0-5161390-5	500	15,24	10,16
6	0-5161390-6	500	17,78	12,70
7	0-5161390-7	500	20,32	15,24
8	0-5161390-8	500	22,86	17,78
9	0-5161390-9	250	25,40	20,32
10	1-5161390-0	250	27,94	22,86
11	1-5161390-1	250	30,48	25,40
12	1-5161390-2	250	33,02	27,94
13	1-5161390-3	150	35,56	30,48
14	1-5161390-4	150	38,10	33,02
15	1-5161390-5	150	40,64	35,56
16	1-5161390-6	100	43,18	38,10
17	1-5161390-7	100	45,72	40,64
18	1-5161390-8	100	48,26	43,18
19	1-5161390-9	100	50,80	45,72
20	2-5161390-0	100	53,34	48,26
21	2-5161390-1	100	55,88	50,80
22	2-5161390-2	100	58,42	53,34
23	2-5161390-3	100	60,96	55,88
24	2-5161390-4	100	63,50	58,42
25	2-5161390-5	100	66,04	60,96
26	2-5161390-6	50	68,58	63,50
27	2-5161390-7	50	71,12	66,04
28	2-5161390-8	50	73,66	68,58
29	2-5161390-9	50	76,20	71,12
30	3-5161390-0	50	78,84	73,66

DO NOT SCALE  
DIMENSIONS IN mm

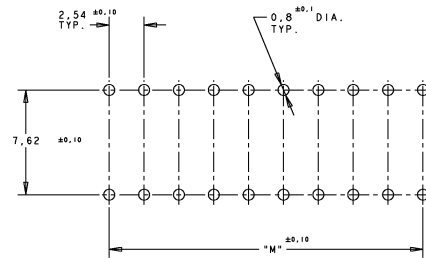
METRIC



AMP PRODUCT SPEC.: 108-19336.  
MATERIAL:  
HOUSING : 30% G.F. NYLON , COLOUR : NATURAL .  
ACTUATOR: 20% G.F. POLYESTER , COLOUR : RED .  
CONTACTS : PHOSPHOR-BRONZE .  
PLATING : MIN. 2,5 µm TIN .

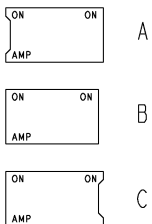


SECTION A-A



RECOMMENDED P.C. BOARD HOLE PATTERN.  
P.C. BOARD THICKNESS : 1,6mm.

SWITCH HOUSINGS MAY HAVE PROFILE A, B OR C.



FINISH				MATERIAL				PARTNUMBER			
CUSTOMER DRAWING FOR REFERENCE ONLY. WILL NOT BE UPDATED.											
COPYRIGHT 1978 BY AMP HOLLAND B.V. ALL INTERNATIONAL RIGHTS RESERVED. AMP PRODUCTS MAY BE COVERED BY U.S. AND FOREIGN AND/OR PATENTS PENDING.											
THIS DRAWING IS UNPUBLISHED. INCREASED FOR PROTECTION.											
TYCO ELECTRONICS BY WERTOENBOSCH, THE NETHERLANDS											
B ECR-07-004547				NAME				DIP SWITCH			
A INITIATE				DATE				SOLDER LEGS 3,2mm LONG			
LTR. REVISION RECORD				DR. CHK. DATE				DRG. No.			
DR.: RHEUVER		CHK.: JvERROOT		APP.: JvERROOT		DRG. No.		RESTRICTED TO		SHEET	
DATE: 29JAN77		DATE: 29JAN77		DATE: 29JAN77		C-5161390		1 OF 1		REV. LTR.	
										B	

86-129	11	10	9	8	7	6	5	4	3	2	1
REV. 04-813											