

DRAWING MADE IN THIRD ANGLE PROJECTION
 THIS DRAWING IS UNPUBLISHED. RELEASED FOR PUBLICATION .19
 © COPYRIGHT 1974,75,80,81,90 BY AMP INCORPORATED. ALL INTERNATIONAL RIGHTS RESERVED.

REVISIONS									
LOC	DIST	P	F	ZONE	LTR	DESCRIPTION	DATE	APPD	HN
AG	1				AM	REV PER 063C-0014-02			

- FOR ADDITIONAL SPECIFICATIONS SEE AMP PRODUCT SPEC 108-7532.
 - SWITCH SHOWN IN OPEN POSITION.
 - ALL CHARACTERS AND ROCKERS ARE WHITE, HOUSING IS BLUE.
 - STAMPING WILL VARY ON 2 AND 3 POSITION SIDES DUE TO SPACE RESTRICTIONS.
- △ .315 DIMENSION APPLIES AT TERMINAL TIPS. TERMINALS ARE .300^{+.010}_{-.000} AT MOUNTING SURFACE.
- △ STRIPPABLE TRANSPARENT SEAL, SEE FIG 1.

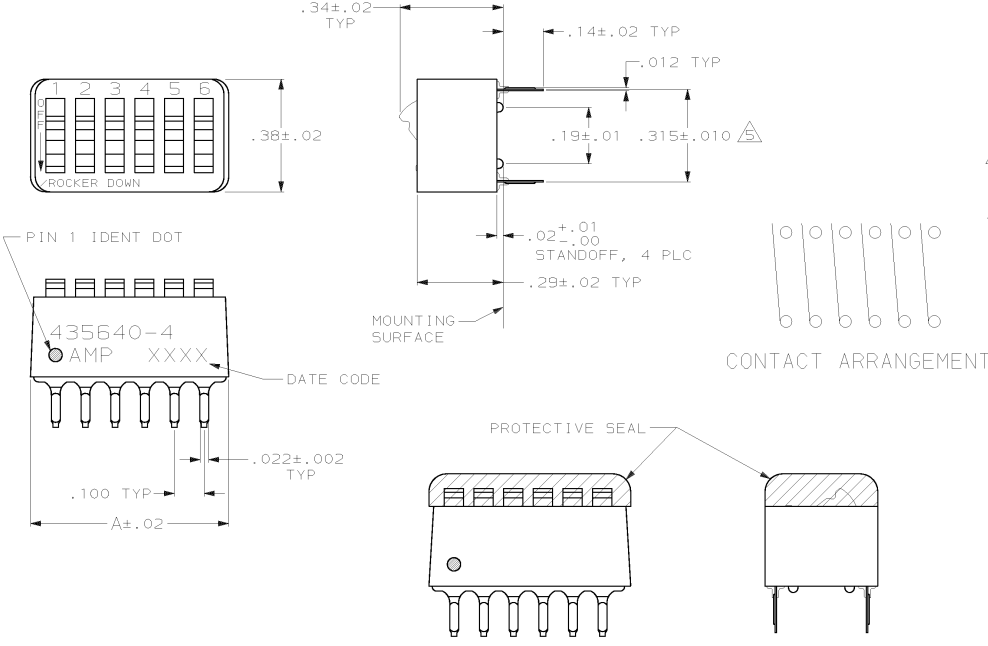


FIG 1

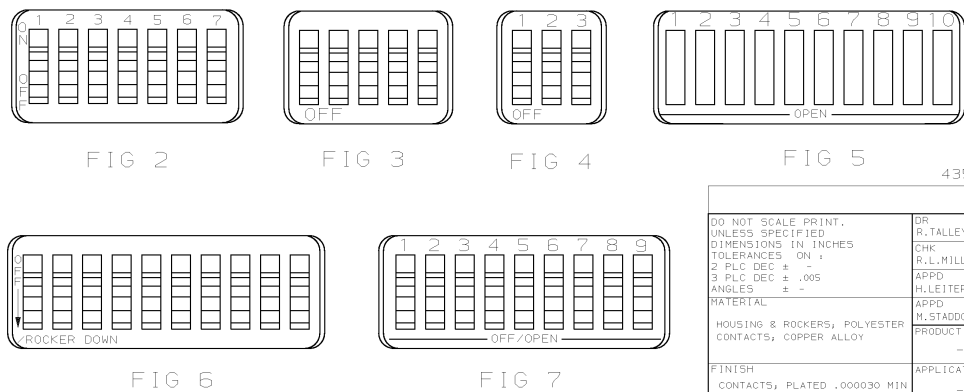


FIG	DESCRIPTION	TERMINAL	POSITION	PART NO
FIG 6		1,08	10	6-435640-1
		.58	5	6-435640-0
FIG 7		.48	4	5-435640-9
		.88	8	5-435640-8
		.98	9	5-435640-7
		.68	6	5-435640-6
FIG 5	△	.58	5	5-435640-5
		.48	4	5-435640-4
FIG 2	△	.88	8	5-435640-3
FIG 5	△	.88	8	5-435640-2
		1.08	10	5-435640-1
FIG 3	△	.88	8	4-435640-9
		.58	5	4-435640-0
NONE		1.08	10	4-435640-7
		1.28	12	4-435640-3
AS SHOWN	△	1.08	10	4-435640-1
		.98	9	4-435640-0
		.88	8	3-435640-9
		.78	7	3-435640-8
		.68	6	3-435640-7
		.58	5	3-435640-6
		.48	4	3-435640-5
OBSOLETE	FIG 4	.38	3	3-435640-4
OBSOLETE		.28	2	3-435640-3
AS SHOWN		1.28	12	3-435640-2
FIG 4		.38	3	3-435640-0
		.28	2	2-435640-9
OBSOLETE	FIG 2	.78	7	2-435640-2
		1.08	10	435640-7
		.98	9	435640-6
AS SHOWN		.88	8	435640-5
		.68	6	435640-4
		.58	5	435640-3
		.48	4	435640-2
		.78	7	435640-1

435640-4 SHOWN			
TOP MARKING	PROTECTIVE SEAL	NO OF POSN	PART NO
A			

DO NOT SCALE PRINT. UNLESS SPECIFIED DIMENSIONS IN INCHES. TOLERANCES ON: 2 PLC DEC # - 3 PLC DEC # .005 ANGLES # -	DR: R.TALLEY 11-15-89 CHK: R.L.MILLER 3-6-90 APPD: H.LEITER 3-6-90 MATERIAL: APPD: H.STADDON 3-6-90	AMP INCORPORATED Harrisburg, Pa. 17105
HOUSING & ROCKERS, POLYESTER CONTACTS, COPPER ALLOY	PRODUCT SPEC	NAME: SWITCH ASSY, DIP, TYPE C, 7100 SERIES, SPST, STANDARD
FINISH: CONTACTS, PLATED .000030 MIN GOLD IN CONTACT AREA OVER .000050 MIN NICKEL	APPLICATION SPEC	SIZE: C CAGE CODE: 00779 DRAWING NO: 435640
WEIGHT		SCALE: 4:1 SHEET: 1 OF 1

CUSTOMER DRAWING