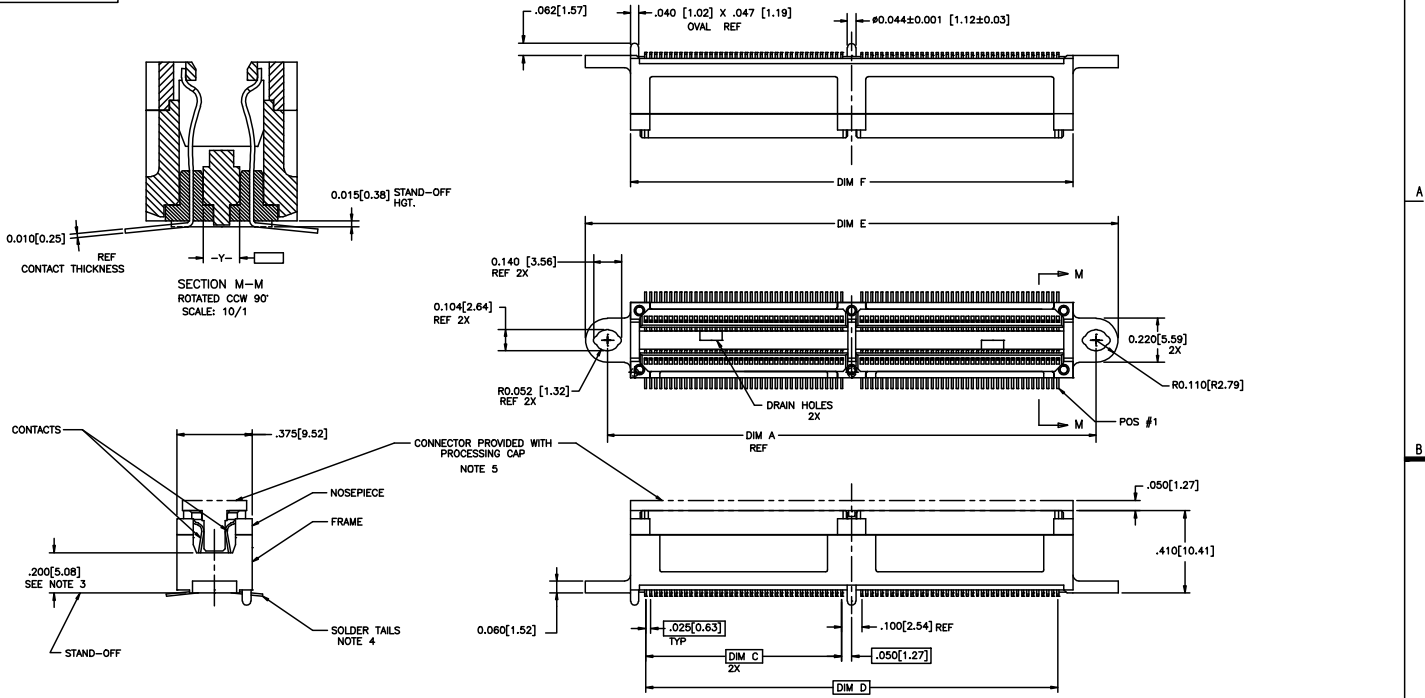
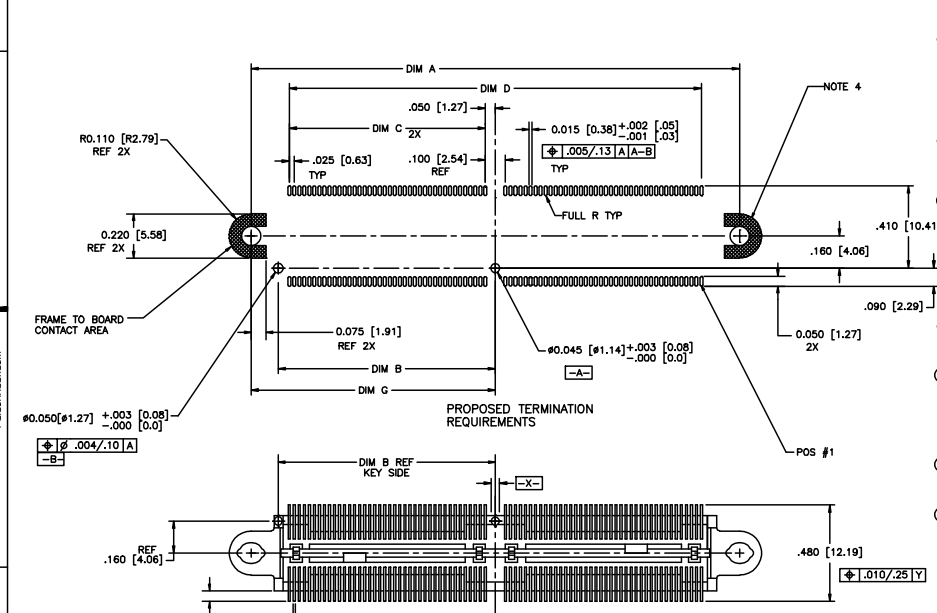


PRODUCT NUMBER  
SEE TABLE



mat'l code		NOTE 1 & 2		surface	tolerance	projection	product family
ISO 1902	ISO 406	ISO 1501		tolerance unless otherwise specified	INCH/MM	scale 1:1	MICROPAX
lir	ec'n no	dr	date	angles	linear		title
H	C70095	SAR	7/22/97				.025M SURFACE MOUNT
J	B81703	EPK	9/25/98				RECEPT., DOUBLE MODULE
K	V12473	MEM	10/10/01	0°±2'			dwg no
L	V12850	MEM	11/02/01				sheet 1 of 2 size
M	M04-0216	MHT	11/17/04	eng	F. SALAS	11/17/04	91403
N	M06-0279	AEA	7/22/06	chr	F. SALAS	11/17/04	A3
P	M08-0271	MHT	9/25/08	app	F. SALAS	11/17/04	type
sheet	revision	P	P				Product Customer Drawing
index	sheet	1	2				

PRODUCT NUMBER	NO. OF CONTACTS	DIM A	DIM B	DIM C	DIM D	DIM E	DIM F	DIM G	CONTACT PLATING NOTE 2
91403-001	120	1.930/49.02	.830/21.08	.725/18.42	1.550/39.37	2.150/54.61	1.700/43.18	.965/24.51	30 GXT
91403-001LF									
91403-002	160	2.430/61.72	1.080/27.43	.975/24.76	2.050/52.07	2.650/67.31	2.200/55.88	1.215/30.86	30 GXT
91403-002LF									
91403-003	200	2.930/74.42	1.330/33.78	1.225/31.12	2.550/64.77	3.150/80.01	2.700/68.58	1.465/37.21	30 GXT
91403-003LF									
91403-403	200	2.930/74.42	1.330/33.78	1.225/31.12	2.550/64.77	3.150/80.01	2.700/68.58	1.465/37.21	60 GXT
91403-403LF									



- NOTES:
- MATERIALS:  
DIELECTRIC: LCP  
CONTACTS: BeCu  
FRAME: ZINC ALLOY #3
  - PLATING:  
SOLDER TAILS:  
TIN LEAD: 150u"/3.81um Sn Pb  
LEAD FREE OPTION: 150u"/3.81um Sn  
FRAME: 100u"/2.54um Ni  
CONTACTS: 30u"/7.6um GXT OVER 50u"/1.27um Ni  
OR 60u"/1.52um GXT OVER 75u"/1.90um Ni.
  - WHEN THE CONNECTOR IS MATED WITH THE OPPOSITE HALF, THE PARALLEL BD. TO BD. HGT. IS .47 ±.01. (APPLYS TO VERT. THRU & SURFACE MT. STYLES)
  - THE SOLDER TAILS ON THIS PRODUCT ARE DESIGNED TO BE COMPLIANT IN ORDER TO ACCOMMODATE PRINTED CIRCUIT BOARD DIMENSIONAL VARIATIONS. THEREFORE, HOLDDOWN HARDWARE IS REQUIRED TO SECURE THE CONNECTOR TO THE PRINTED CIRCUIT BOARD FOR MOST TYPES OF SOLDER REFLOW OPERATIONS. FOR FURTHER APPLICATION DATA, INCLUDING HOLE SIZES FOR VARIOUS TYPES OF HARDWARE, SEE TA-932.
  - DO NOT REMOVE PROCESSING CAP UNTIL SOLDERING IS COMPLETED. CAP WILL PREVENT POTENTIAL NOSE PIECE BOW DURING HIGH TEMP. SOLDERING PROCESS.
  - PART NUMBERS WITH LF IN THE END ARE LEAD FREE OPTION.  
EXAMPLE: 91403-XXX LF  
 OPTIONAL LEAD FREE
  - THIS PRODUCT MEETS EUROPEAN UNION DIRECTIVES AND OTHER COUNTRY REGULATION AS DESCRIBED IN GS-22-008.
  - THE HOUSING WILL WITHSTAND EXPOSURE TO 260° PEAK TEMPERATURE FOR 20 SECONDS IN A CONVECTION, INFRA-RED OR VAPOR PHASE REFLOW OVEN.

mat'l code	surface	tolerance	projection	product family
NOTE 1 & 2	ISO 1902	ISO 406		MICROPAX
itr ecn no dr date	tolerance unless otherwise specified		INCH/MM	title
P	angles	XX±.01/XX±.03	1:1	.025M SURFACE MOUNT RECEPT., DOUBLE MODULE
	linear	XXX±.005/XXX±.01		dwg no
	0°±2'	XXXX±.000/XXXX±.005		91403
	dr	M. HERNANDEZ 11/17/04		sheet 2 of 2 size
	eng	F. SALAS 11/17/04		A3
	chr	F. SALAS 11/17/04		type
	appd	F. SALAS 11/17/04		Product Customer Drawing
sheet index	revision sheet			