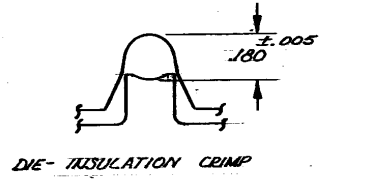
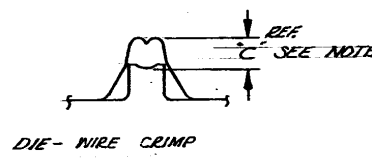
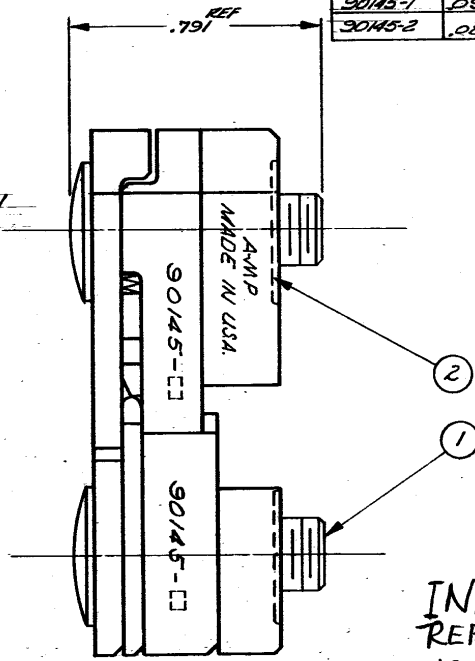
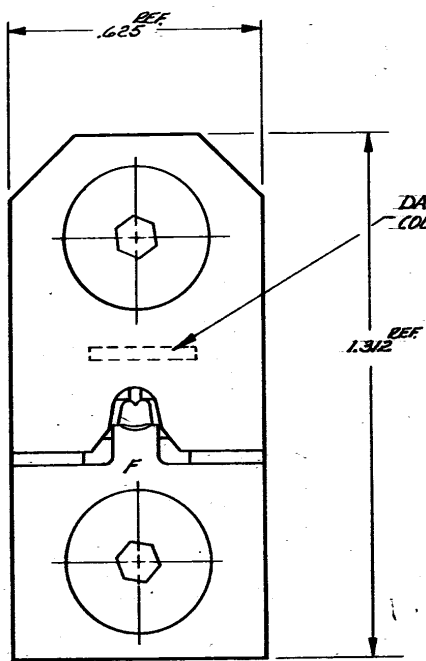


DIE NO	C	TERM. C.H.	A
90145-1	.082	.086 ± .003	14-12
90145-2	.084	.086 ± .003	16



DATA SHOWN IN COLUMN "A"

INACTIVE
11/8/77

INACTIVE, REFER TO IS. SHEET 7175

1. GAGE DIMENSIONS APPLY WHEN DIES ARE BOTTOMED BUT NOT UNDER PRESSURE
2. FOR REPLACEMENT OF PARTS OTHER THAN SCREENS & RETAINING RINGS, DIES SHOULD BE RETURNED TO AMP INC., HBG, PENNA.
3. FOR TOOL USAGE SEE INSTRUCTION SHEET I.S. 7175
4. DIE CAN BE CHECKED BY MEASURING TERM. CH. AS SHOWN IN CHART.

LINE	REVISION RECORD	REV	DATE	DESCRIPTION
A				

QTY	NO	DESCRIPTION	REMARKS
2	2	F21046-3	RING - RETAINING
2	2	A 306131-9	SCREEN - SPECIAL
2	2		

© 1965 BY AMP INCORPORATED. ALL RIGHTS RESERVED.
 AMP PRODUCTS COVERED BY PATENTS AND/OR PATENTS PENDING.
 DR. B. LUCI
 DATE: 6-30-65
 MATERIAL AND FINISH: STEEL: BLK OXIDE
 WEIGHT: APPROX. 3oz.
 WIRE - RANGE - INSULATION: # - #
 TOLERANCE EXCEPT AS NOTED: ± .015 ± 1° of
 SCALE: 1:1
 LOC: RIB
 NO: 9014
 NAME: DIE ASSEMBLY

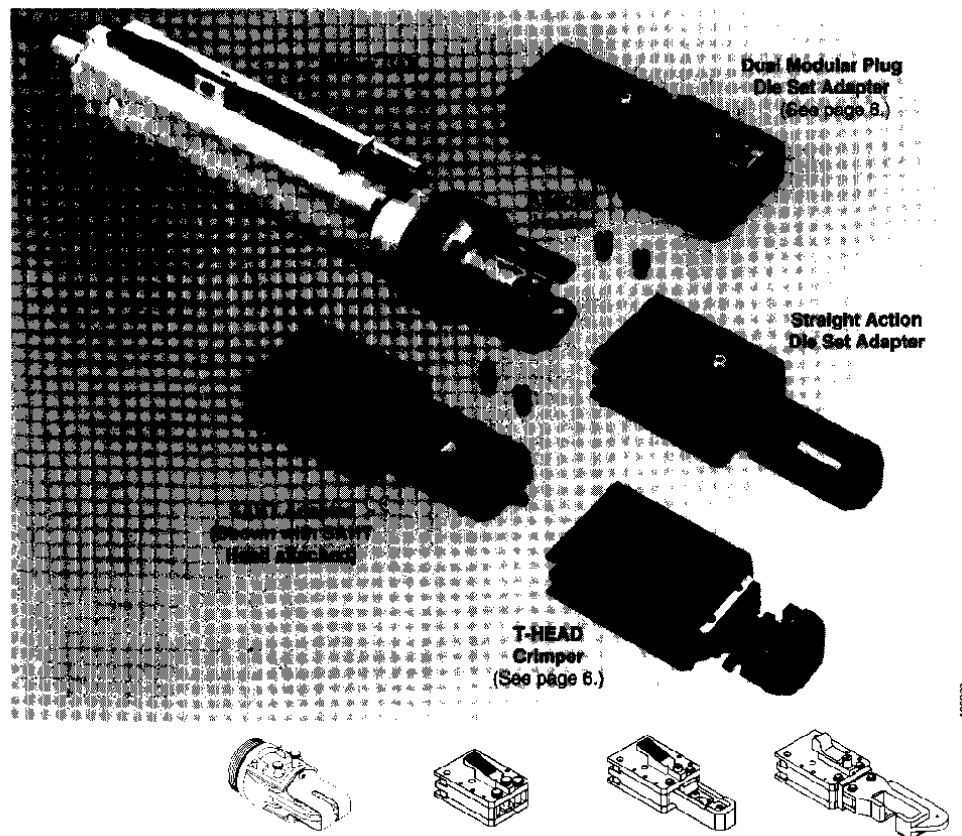
Adapters, Crimping Heads and Die Sets

For Adapter Holders Part Number 189928-1 and Part Number 356304-1

Note: Adapter Holder NOT required for DAHT Adapter.

These convenient adapters allow you to use the crimping heads and die sets from various CERTI-CRIMP straight action and double action hand tools (SAHTs and DAHTs) with the 626 Pneumatic Tool System. Now hand tools used for prototype and imitated production applications can be easily adapted for low- to medium-volume production.

Quick-release pins attach the crimping head to the adapter. A spring loaded, slide switch or lever permits quick opening and closing of the die sets for insertion and removal of the crimped product.



Products Applied		Wire Size Range		DAHT Adapter C E Part No. 1213563-1	SAHT Adapter C E Part No. 217201-1		Straight Action Adapter Part No. 217200-1	"C" Head Adapter Part No. 318161-1 2,3
Connector/ Terminal	Style	AWG	mm ²	for DAHT Assembly ¹	for SAHT Assembly ¹	for Head Only	for Die Sets ⁴	for Die Sets ⁴
AMPLIMITE Connector Contacts	Size 20 DF	23-24	0.08-0.2	—	90302-1	90302-2	—	—
		24-20	0.2-C.5	—	—	—	—	—
	Size 22 DF	23-22	0.08-0.3	—	90430-1	90430-2	—	—
		26-22	0.12-0.3	—	90418-1	90418-2	—	—
AMP [®] MODU Connector Contacts	Mod. IV	30-20	0.05-0.5	—	90202-2	90202-5	—	—
		26-22	0.12-0.3	—	90289-1	90289-2	—	—
	Locking Clip	32-28	0.03-C.08	—	58342-2	58342-4	—	—
		26-22	0.12-0.3	—	58342-1	58342-3	—	—
MTE & Tandem Spring	32-24	0.03-0.2	—	—	—	—	—	
	Type II	24-20	0.2-C.5	—	—	—	—	30230-1
Type III+		18-14	0.9-2	—	—	—	—	30231-2
	26-24	0.12-0.2	—	90066-7	90066-9	—	—	
	24-20	0.2-C.5	—	90067-5	90067-7	—	—	
	18 16	0.9 1.3	—	90067 4	90067 6	—	—	
CPC Connector, M Series Connector Contacts	Type XII	18-14	0.9-2	—	90310-3	90310-4	—	—
		16	1.3	—	—	—	—	90145-2
Subminiature COAXICON	Type XII	14 12	2 3	—	—	—	—	30145-1
		10-8	5-8	—	—	—	—	30140-1
FASTON Straight Receptacles ([®] Premier Line Only)	250 Series	174 RG/U	—	—	—	—	—	69690
		187 RG/U	—	—	—	—	—	69690-1
		22-18	0.3-0.9	90166-1	—	—	—	—
		18-14	0.9-2	90165-1	—	—	—	—
		14-10	2-6	90120	—	—	—	—

¹ Requires removal of crimping head from hand tool assembly.

² Uses same die sets as "C" Head Hand Tool Part No. 69710-1.

³ Requires Power Unit Part No. 189721-2 or 189722-2.

⁴ This is only a partial listing. For die sets to crimp other AMP[®] product lines, contact the Technical Support Center at 1-800-522-6752.