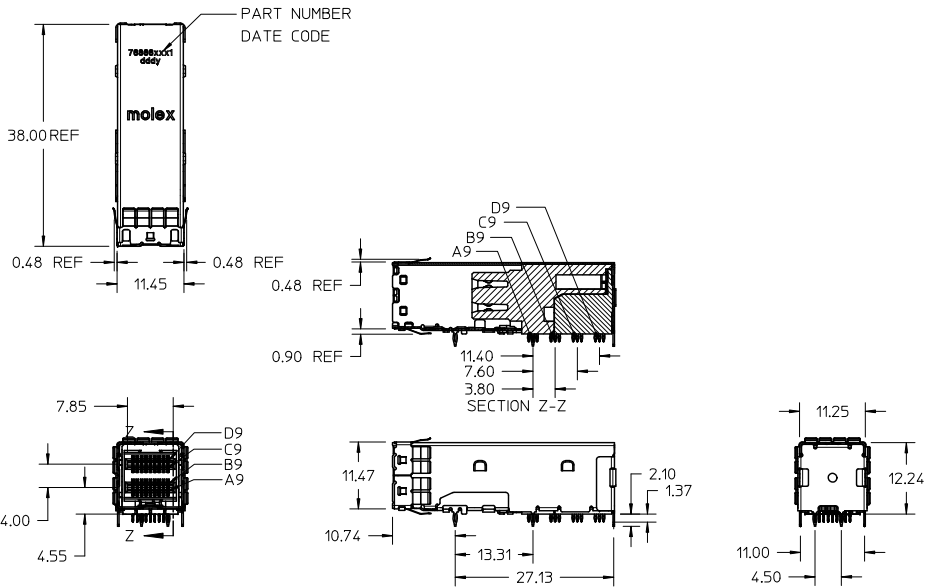
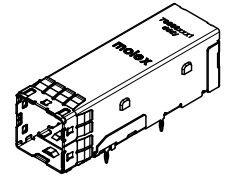


13 12 11 10 9 8 7 6 5 4 3 2 1



NOTES:

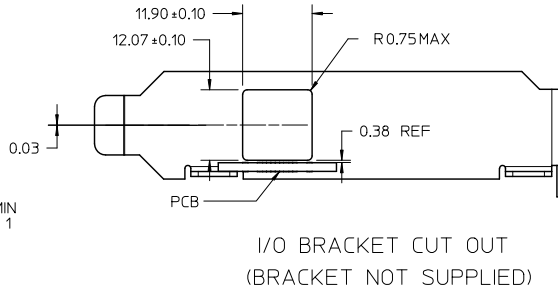
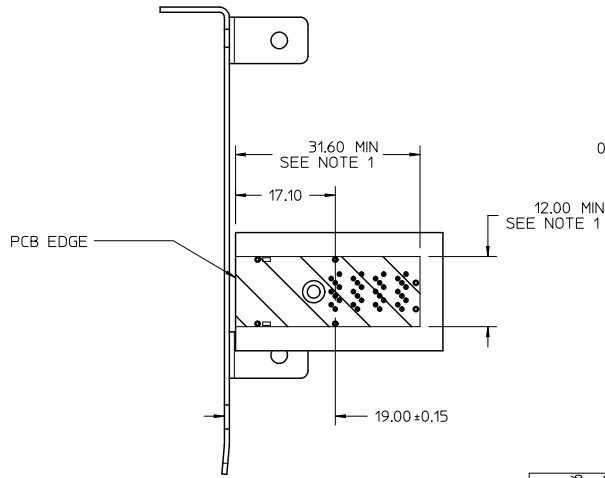
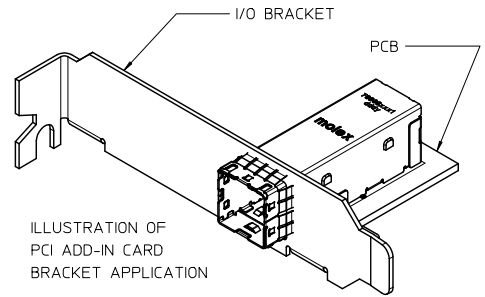
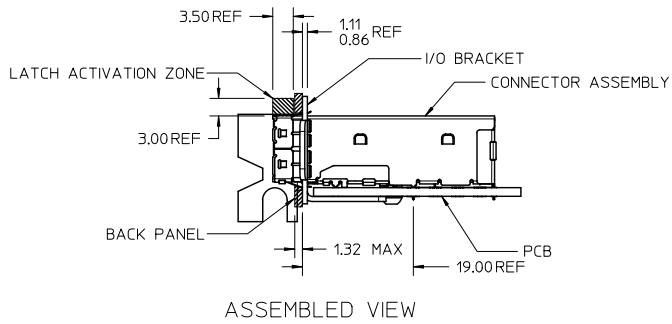
- MATERIALS:**
  - CONNECTOR HOUSING: HIGH TEMPERATURE THERMOPLASTIC
  - GLASS FILLED, UL 94V-0
  - EMI CAGE: NICKEL SILVER ALLOY
  - EMI FINGERS: COPPER ALLOY
  - TERMINALS: COPPER ALLOY
- FINISHES:**
  - EMI FINGERS: 0.50MM MIN NICKEL
  - CONTACT AREA: 0.76MM MIN GOLD OVER 2.54MM MIN NICKEL
  - TAIL AREA:
    - OPTION 1: 0.76MM-1.52MM TIN/LEAD (90/10) OVER 2.54MM MIN NICKEL
    - OPTION 2: 0.76MM-1.52MM TIN (LEAD FREE) OVER 2.54MM MIN NICKEL
- PRODUCT SPECIFICATION:** PS-76866-001
- PACKAGING SPECIFICATION:** PK-76866-001
- MATES WITH:** MOLEX CABLE SERIES 111068
- RECOMMENDED MOUNTING HARDWARE:** M2X0.4 BUTTON HEAD SCREW  
MOUNTING SCREW LENGTH: BOARD THICKNESS + 1.4MM MAX (0.9MM MIN)  
MOUNTING HARDWARE NOT SUPPLIED

PLATING OPT.	MATERIAL NO.
OPTION 1	76866-0001
OPTION 2	76866-0011

<b>EMI FINGERS REVISED</b> EC NO.: UCP2011-0739 DRAWN/KLANG 2010/10/26 CHKD: MBANAKIS APPR: MBANAKIS 2011/03/18 REV D	<b>QUALITY SYMBOLS</b> 	<b>GENERAL TOLERANCES (UNLESS SPECIFIED)</b>		<b>DIMENSION STYLE</b> MM ONLY		SCALE 2:1	DESIGN UNITS METRIC	THIRD ANGLE PROJECTION	
		4 PLACES ±--- ±---	3 PLACES ±--- ±---	DRAWN BY KLANG	DATE 2009/03/04	TITLE IPASS PLUS HD 1X1 ASSEMBLY			
		2 PLACES ±0.13 ±---	1 PLACE ±0.25 ±---	CHECKED BY DATE	DATE	APPROVED BY MBANAKIS 2010/01/14			
		ANGULAR ±1/2°		MATERIAL NO. SEE CHART		DOCUMENT NO. SD-76866-001		SHEET NO. 1 OF 7	
DRAFT WHERE APPLICABLE MUST REMAIN WITHIN DIMENSIONS				THIS DRAWING CONTAINS INFORMATION THAT IS PROPRIETARY TO MOLEX INCORPORATED AND SHOULD NOT BE USED WITHOUT WRITTEN PERMISSION					

12 11 10 9 8 7 6 5 4 3 2 1

# PCI ADD-IN CARD APPLICATION



NOTES:  
1. CONNECTOR KEEP OUT AREA

SEE SHEET 1 EC NO: UCP2011-0739 DRAWN BY: DRWINKLANG 2010/10/26 CHKD: MBANAK1S APPR: MBANAK1S 2011/03/18	QUALITY SYMBOLS	GENERAL TOLERANCES (UNLESS SPECIFIED)		DIMENSION STYLE		SCALE	DESIGN UNITS	THIRD ANGLE PROJECTION	
	▽=0 ▽=0	mm	INCH	MM ONLY		2:1	METRIC		
		4 PLACES ±---	±---	DRAWN BY	DATE	TITLE			
		3 PLACES ±---	±---	KLANG	2009/03/04	IPASS PLUS HD 1X1 ASSEMBLY			
	2 PLACES ±0.13	±---	CHECKED BY	DATE	MATERIAL NO.				
	1 PLACE ±0.25	±---	APPROVED BY	DATE	DOCUMENT NO.				
	ANGULAR ±1/2°			MBANAK1S	2010/01/14	SD-76866-001			
DRAFT WHERE APPLICABLE MUST REMAIN WITHIN DIMENSIONS		SEE CHART		THIS DRAWING CONTAINS INFORMATION THAT IS PROPRIETARY TO MOLEX INCORPORATED AND SHOULD NOT BE USED WITHOUT WRITTEN PERMISSION					
								SHEET NO. 2 OF 7	

# ALL OTHER M/B APPLICATIONS

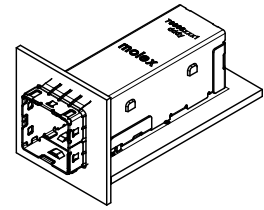
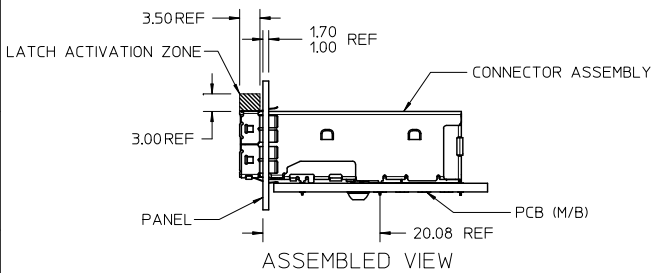
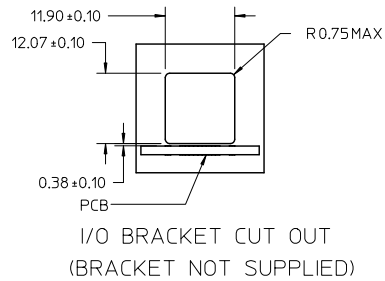
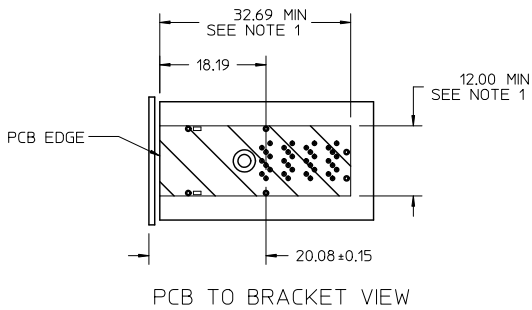


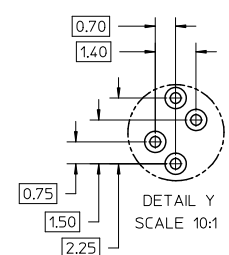
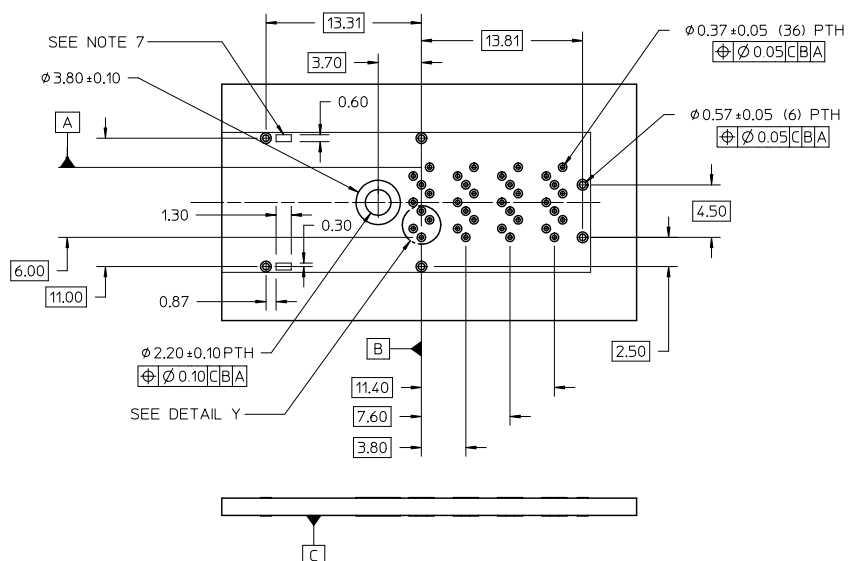
ILLUSTRATION OF ALL OTHER M/B BRACKET APPLICATION



NOTES:  
1. CONNECTOR KEEP OUT AREA

SEE SHEET 1 EC NO: UCP2011-0739 D: DRINKLANG 2010/10/26 CHKD: MBANAK1S APPR: MBANAK1S 2011/03/18	QUALITY SYMBOLS	GENERAL TOLERANCES (UNLESS SPECIFIED)		DIMENSION STYLE		SCALE	DESIGN UNITS	THIRD ANGLE PROJECTION	
	▽=0	mm	INCH	MM ONLY		2:1	METRIC		
	▽=0	4 PLACES ±---	±---	DRAWN BY	DATE	TITLE			
	▽=0	3 PLACES ±---	±---	KLANG	2009/03/04	IPASS PLUS HD 1X1 ASSEMBLY			
▽=0	2 PLACES ±0.13	±---	CHECKED BY	DATE	MATERIAL NO.				
▽=0	1 PLACE ±0.25	±---	APPROVED BY	DATE	MOLEX INCORPORATED				
	ANGULAR ±1/2°			MBANAK1S	2010/01/14	DOCUMENT NO.		SHEET NO.	
		DRAFT WHERE APPLICABLE MUST REMAIN WITHIN DIMENSIONS		SEE CHART		SD-76866-001		3 OF 7	
		THIS DRAWING CONTAINS INFORMATION THAT IS PROPRIETARY TO MOLEX INCORPORATED AND SHOULD NOT BE USED WITHOUT WRITTEN PERMISSION							

# RECOMMENDED FOOTPRINT



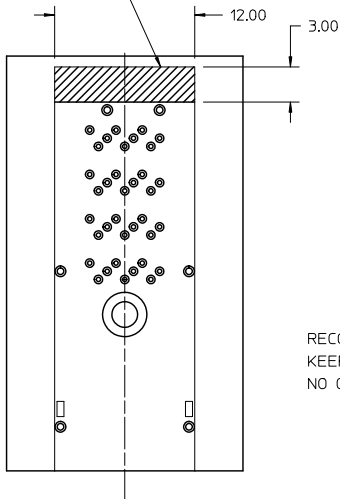
- NOTES:
1. RECOMMENDED DRILL SIZE FOR A 0.37 $\phi$  FINISHED PTH IS 0.48 $\phi$
  2. RECOMMENDED ANNULAR RING AROUND 0.37 $\phi$  FINISHED PTH IS 0.73 $\phi$
  3. MINIMUM RECOMMENDED SPACING: 14.00MM
  4. MINIMUM PCB THICKNESS: 1.57MM
  5. RECOMMENDED DRILL SIZE FOR A 0.57 $\phi$  FINISHED PTH IS 0.68 $\phi$
  6. RECOMMENDED ANNULAR RING AROUND A 0.57 $\phi$  FINISHED PTH IS 0.93 $\phi$
  7. CAGE STAND OFF AREA, NO TRACES ON SURFACE OF PCB IN THESE AREAS

SEE SHEET 1 EC NO: UCP2011-0739 D: DRINKLANG 2010/10/26 CHKD: MBANAK1S APPR: MBANAK1S 2011/03/18	QUALITY SYMBOLS	GENERAL TOLERANCES (UNLESS SPECIFIED)		DIMENSION STYLE		SCALE	DESIGN UNITS	THIRD ANGLE PROJECTION	
	$\nabla=0$ $\nabla=0$	mm	INCH	MM ONLY		4:1	METRIC		
		4 PLACES ±--- ±---		DRAWN BY	DATE	TITLE			
		3 PLACES ±--- ±---		KLANG	2009/03/04	IPASS PLUS HD 1X1 ASSEMBLY			
	2 PLACES ±0.13 ±---		CHECKED BY	DATE	MATERIAL NO.				
	1 PLACE ±0.25 ±---		APPROVED BY	DATE	MOLEX INCORPORATED				
	ANGULAR ±1/2°		MBANAK1S	2010/01/14	DOCUMENT NO.				
			DRAFT WHERE APPLICABLE MUST REMAIN WITHIN DIMENSIONS		SEE CHART		SD-76866-001		SHEET NO.
					C		THIS DRAWING CONTAINS INFORMATION THAT IS PROPRIETARY TO MOLEX INCORPORATED AND SHOULD NOT BE USED WITHOUT WRITTEN PERMISSION		4 OF 7

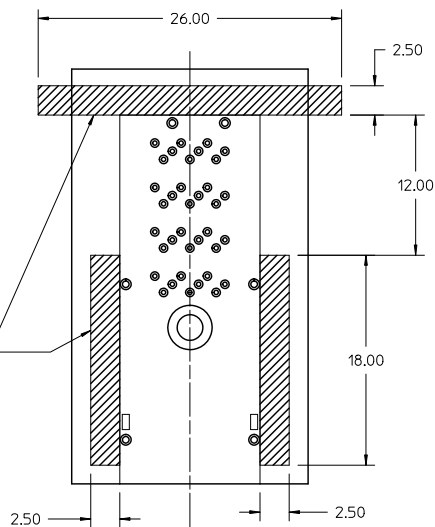
13 12 11 10 9 8 7 6 5 4 3 2 1

## RECOMMENDED TOOLING KEEP OUT AREAS

RECOMMENDED INSERTION TOOL  
KEEP OUT AREA  
NO COMPONENTS IN THIS AREA  
MORE THAN 7.50 mm TALL



RECOMMENDED EXTRACTION TOOL  
KEEP OUT AREA  
NO COMPONENTS IN THESE AREAS

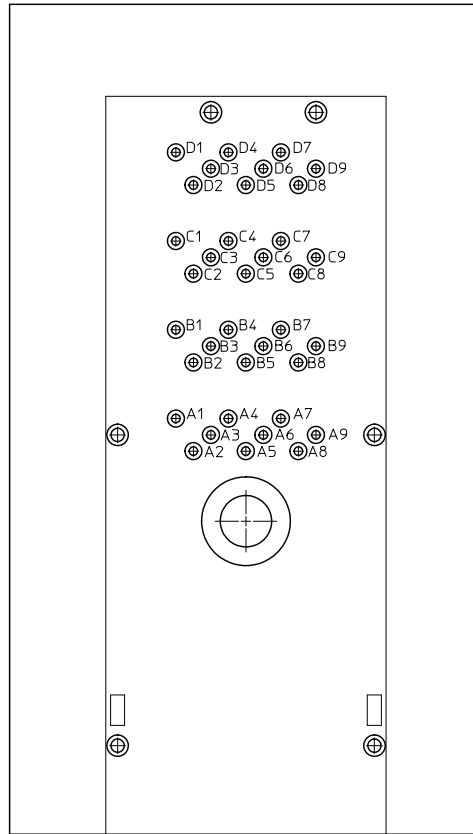


SEE SHEET 1 EC NO: UCP2011-0739 D DRAWN/KLANG 2010/10/26 CHKD: APPR: MBANK1S 2011/03/18	QUALITY SYMBOLS	GENERAL TOLERANCES (UNLESS SPECIFIED)		DIMENSION STYLE MM ONLY		SCALE 4:1	DESIGN UNITS METRIC	THIRD ANGLE PROJECTION
	▽=0	mm	INCH	DRAWN BY KLANG	DATE 2009/03/04	TITLE IPASS PLUS HD 1X1 ASSEMBLY		
	▽=0	4 PLACES ±---	±---	CHECKED BY	DATE	APPROVED BY MBANK1S		
	▽=0	3 PLACES ±---	±---	DATE	2010/01/14	DOCUMENT NO. SD-76866-001		
		2 PLACES ±0.13	±---	MATERIAL NO. MBANK1S		MOLEX INCORPORATED		SHEET NO. 5 OF 7
		1 PLACE ±0.25	±---	SIZE C		THIS DRAWING CONTAINS INFORMATION THAT IS PROPRIETARY TO MOLEX INCORPORATED AND SHOULD NOT BE USED WITHOUT WRITTEN PERMISSION		
		ANGULAR ±1/2°		DRAFT WHERE APPLICABLE MUST REMAIN WITHIN DIMENSIONS				

Id\_frame\_C.P. AM.T  
Rev. F 2009/06/18

12 11 10 9 8 7 6 5 4 3 2 1

13 12 11 10 9 8 7 6 5 4 3 2 1



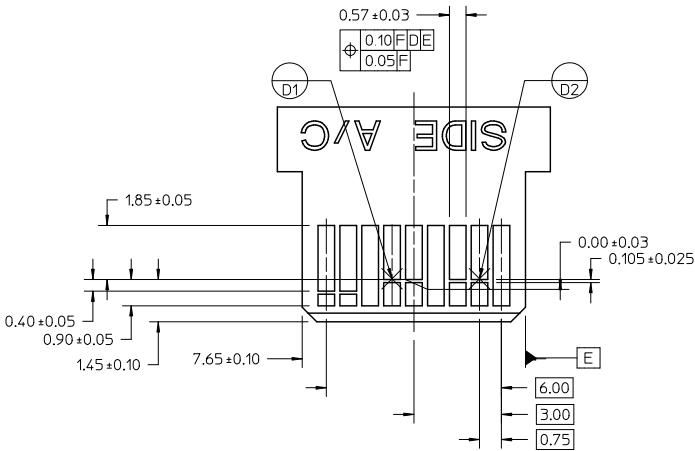
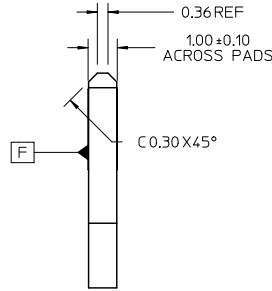
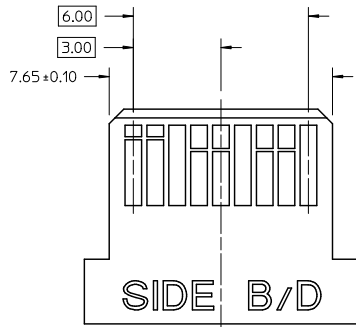
SEE SHEET 1 EC NO: UCP2011-0739 D: DRINK KLANG 2010/10/26 CHKD: MBANAK1S APPR: MBANAK1S 2011/03/18	QUALITY SYMBOLS	GENERAL TOLERANCES (UNLESS SPECIFIED)		DIMENSION STYLE		SCALE	DESIGN UNITS	THIRD ANGLE PROJECTION	
	$\nabla=0$ $\nabla=0$	mm	INCH	MM ONLY		8:1	METRIC		
		4 PLACES ±---	±---	DRAWN BY	DATE	TITLE			
		3 PLACES ±---	±---	KLANG	2009/03/04	IPASS PLUS HD 1X1 ASSEMBLY			
	2 PLACES ±0.13	±---	CHECKED BY	DATE	APPROVED BY				
	1 PLACE ±0.25	±---	MBANAK1S	2010/01/14	DATE				
	ANGULAR ±1/2°	MATERIAL NO. MBANAK1S							
DRAFT WHERE APPLICABLE MUST REMAIN WITHIN DIMENSIONS		SEE CHART		DOCUMENT NO.		SD-76866-001		SHEET NO. 6 OF 7	
THIS DRAWING CONTAINS INFORMATION THAT IS PROPRIETARY TO MOLEX INCORPORATED AND SHOULD NOT BE USED WITHOUT WRITTEN PERMISSION									

Id\_frame\_C\_P\_AM.T  
Rev. E 2006/04/15

12 11 10 9 8 7 6 5 4 3 2 1

13 12 11 10 9 8 7 6 5 4 3 2 1

J I H G F E D C B A



- NOTES:  
 1. 0.05 MINIMUM KEEP OUT FOR SOLDER MASK AROUND ALL PADS  
 2. DATUM D TARGETS ARE DEFINED BY THE RESPECTIVE PAD CENTER LINES AND THE LEADING EDGE OF THE TARGET PADS

SEE SHEET 1 EC NO: UCP2011-0739 DRAWN BY: DRINKLANG 2010/10/26 CHKD: MBANAKIS APPR: MBANAKIS 2011/03/18 REV DESCRIPTION	QUALITY SYMBOLS	GENERAL TOLERANCES (UNLESS SPECIFIED)	DIMENSION STYLE	SCALE	DESIGN UNITS	THIRD ANGLE PROJECTION
	▽=0 ▽=0	mm INCH 4 PLACES ± --- ± --- 3 PLACES ± --- ± --- 2 PLACES ± 0.13 ± --- 1 PLACE ± 0.25 ± --- ANGULAR ± 1/2°	MM ONLY	4:1	METRIC	
			DRAWN BY: KLANG DATE: 2009/03/04	TITLE: IPASS PLUS HD 1X1 ASSEMBLY		
			CHECKED BY: DATE:	APPROVED BY: MBANAKIS DATE: 2010/01/14		
		DRAFT WHERE APPLICABLE MUST REMAIN WITHIN DIMENSIONS	SIZE: SEE CHART	MATERIAL NO: MBANAKIS DOCUMENT NO: SD-76866-001		SHEET NO: 7 OF 7
			THIS DRAWING CONTAINS INFORMATION THAT IS PROPRIETARY TO MOLEX INCORPORATED AND SHOULD NOT BE USED WITHOUT WRITTEN PERMISSION			

Id\_frame\_C\_P\_AM\_T Rev. E 2006/04/15

12 11 10 9 8 7 6 5 4 3 2 1

J I H G F E D C B A