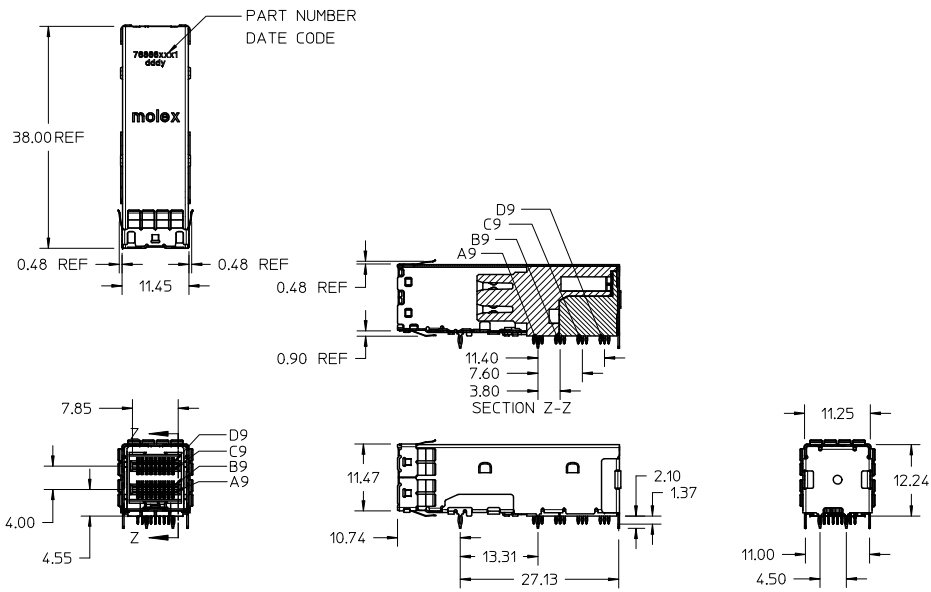
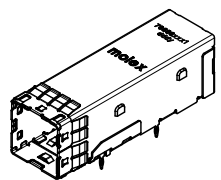


13 12 11 10 9 8 7 6 5 4 3 2 1



- NOTES:
- MATERIALS:  
CONNECTOR HOUSING: HIGH TEMPERATURE THERMOPLASTIC  
GLASS FILLED, UL 94V-0  
EMI CAGE: NICKEL SILVER ALLOY  
EMI FINGERS: COPPER ALLOY  
TERMINALS: COPPER ALLOY
  - FINISHES:  
EMI FINGERS: 0.50MM MIN NICKEL  
CONTACT AREA: 0.76MM MIN GOLD OVER 2.54MM MIN NICKEL  
TAIL AREA:  
OPTION 1: 0.76MM-1.52MM TIN/LEAD (90/10) OVER 2.54MM MIN NICKEL  
OPTION 2: 0.76MM-1.52MM TIN (LEAD FREE) OVER 2.54MM MIN NICKEL
  - PRODUCT SPECIFICATION: PS-76866-001
  - PACKAGING SPECIFICATION: PK-76866-001
  - MATES WITH: MOLEX CABLE SERIES 111068
  - RECOMMENDED MOUNTING HARDWARE: M2X0.4 BUTTON HEAD SCREW  
MOUNTING SCREW LENGTH: BOARD THICKNESS + 1.4MM MAX (0.9MM MIN)  
MOUNTING HARDWARE NOT SUPPLIED

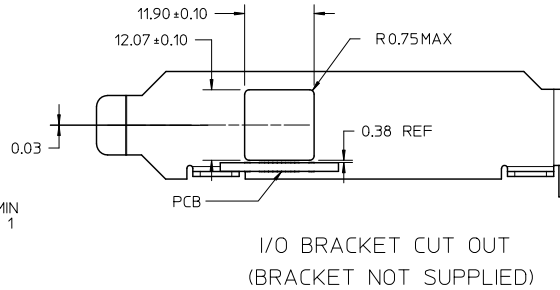
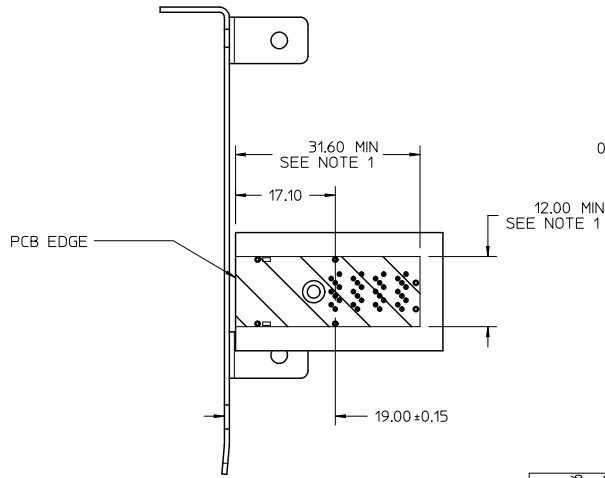
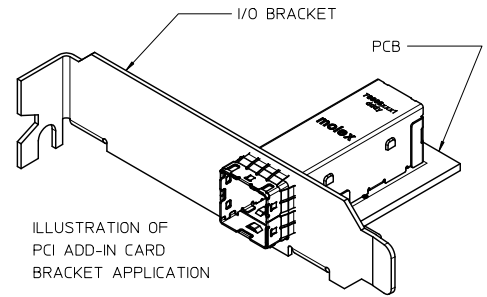
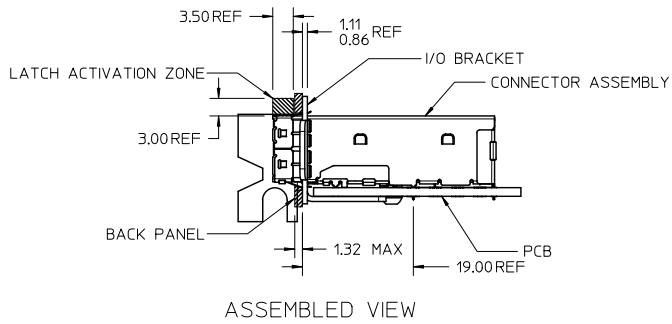
PLATING OPT.	MATERIAL NO.
OPTION 1	76866-0001
OPTION 2	76866-0011

<b>EMI FINGERS REVISED</b> EC NO.: UCP2011-0739 DRAWN BY: DRW:KLANG CHKD: APPR:MBANAKIS DATE: 2010/10/26 DATE: 2011/03/18	QUALITY SYMBOLS	GENERAL TOLERANCES (UNLESS SPECIFIED)	DIMENSION STYLE	SCALE	DESIGN UNITS	THIRD ANGLE PROJECTION															
	$\nabla=0$ $\nabla=0$	<table border="1"> <thead> <tr> <th></th> <th>mm</th> <th>INCH</th> </tr> </thead> <tbody> <tr> <td>4 PLACES</td> <td>±---</td> <td>±---</td> </tr> <tr> <td>3 PLACES</td> <td>±---</td> <td>±---</td> </tr> <tr> <td>2 PLACES</td> <td>± 0.13</td> <td>±---</td> </tr> <tr> <td>1 PLACE</td> <td>± 0.25</td> <td>±---</td> </tr> </tbody> </table>		mm	INCH	4 PLACES	±---	±---	3 PLACES	±---	±---	2 PLACES	± 0.13	±---	1 PLACE	± 0.25	±---	MM ONLY	2:1	METRIC	
		mm	INCH																		
	4 PLACES	±---	±---																		
3 PLACES	±---	±---																			
2 PLACES	± 0.13	±---																			
1 PLACE	± 0.25	±---																			
DESCRIPTION	DRAFT WHERE APPLICABLE MUST REMAIN WITHIN DIMENSIONS	DRAWN BY: KLANG DATE: 2009/03/04 CHECKED BY: DATE:	TITLE: IPASS PLUS HD 1X1 ASSEMBLY APPROVED BY: MBANAKIS DATE: 2010/01/14 MATERIAL NO.: SEE CHART DOCUMENT NO.: SD-76866-001	MOLEX INCORPORATED SHEET NO.: 1 OF 7																	
REV			SIZE	THIS DRAWING CONTAINS INFORMATION THAT IS PROPRIETARY TO MOLEX INCORPORATED AND SHOULD NOT BE USED WITHOUT WRITTEN PERMISSION																	

Id\_frame\_C\_P\_AM\_T  
Rev. E 2006/04/15

12 11 10 9 8 7 6 5 4 3 2 1

# PCI ADD-IN CARD APPLICATION



NOTES:  
1. CONNECTOR KEEP OUT AREA

SEE SHEET 1 EC NO: UCP2011-0739 DRAWN BY: DRW:KLANG 2010/10/26 CHKD: MBANAK1S APPR: MBANAK1S 2011/03/18	QUALITY SYMBOLS	GENERAL TOLERANCES (UNLESS SPECIFIED)		DIMENSION STYLE		SCALE	DESIGN UNITS	THIRD ANGLE PROJECTION
	▽=0 ▽=0	mm	INCH	MM ONLY		2:1	METRIC	
		4 PLACES ±---	±---	DRAWN BY	DATE	TITLE		
		3 PLACES ±---	±---	KLANG	2009/03/04	IPASS PLUS HD 1X1 ASSEMBLY		
	2 PLACES ±0.13	±---	CHECKED BY	DATE	MATERIAL NO.			
	1 PLACE ±0.25	±---	MBANAK1S	2010/01/14	MOLEX INCORPORATED			
	ANGULAR ±1/2°	DRAFT WHERE APPLICABLE MUST REMAIN WITHIN DIMENSIONS		APPROVED BY	DATE	DOCUMENT NO.		SHEET NO.
				MBANAK1S		SD-76866-001		2 OF 7
				SEE CHART		THIS DRAWING CONTAINS INFORMATION THAT IS PROPRIETARY TO MOLEX INCORPORATED AND SHOULD NOT BE USED WITHOUT WRITTEN PERMISSION		

# ALL OTHER M/B APPLICATIONS

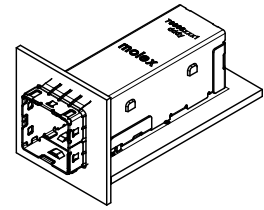
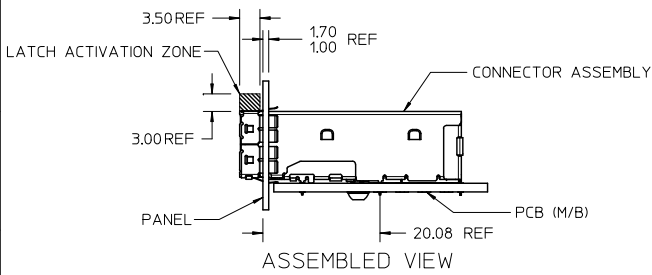
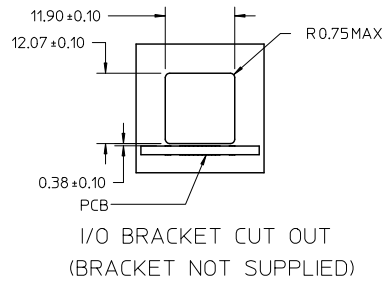
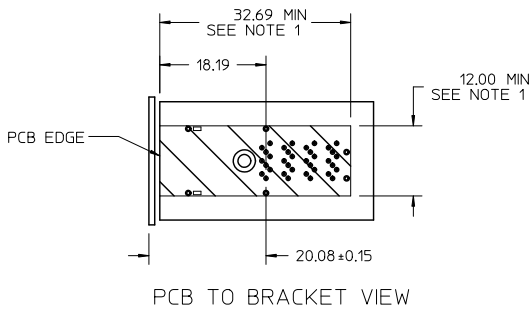


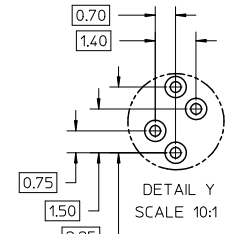
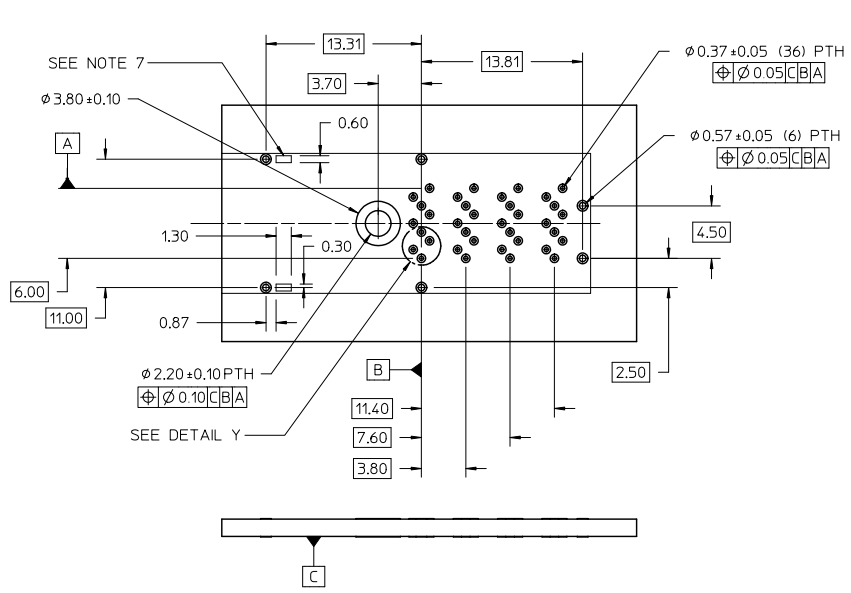
ILLUSTRATION OF ALL OTHER M/B BRACKET APPLICATION



NOTES:  
1. CONNECTOR KEEP OUT AREA

SEE SHEET 1 EC NO: UCP2011-0739 D: DRINKLANG 2010/10/26 CHKD: MBANAK1S APPR: MBANAK1S 2011/03/18	QUALITY SYMBOLS	GENERAL TOLERANCES (UNLESS SPECIFIED)		DIMENSION STYLE		SCALE	DESIGN UNITS	THIRD ANGLE PROJECTION	
	▽=0	mm	INCH	MM ONLY		2:1	METRIC	IPASS PLUS HD 1X1 ASSEMBLY	
	▽=0	4 PLACES ±---	±---	DRAWN BY	DATE	TITLE			
	▽=0	3 PLACES ±---	±---	KLANG	2009/03/04	MATERIAL NO. SD-76866-001			
▽=0	2 PLACES ±0.13	±---	CHECKED BY	DATE	DOCUMENT NO.				
▽=0	1 PLACE ±0.25	±---	APPROVED BY	DATE	SHEET NO. 3 OF 7				
	ANGULAR ±1/2°	DRAFT WHERE APPLICABLE MUST REMAIN WITHIN DIMENSIONS		SEE CHART		THIS DRAWING CONTAINS INFORMATION THAT IS PROPRIETARY TO MOLEX INCORPORATED AND SHOULD NOT BE USED WITHOUT WRITTEN PERMISSION			

# RECOMMENDED FOOTPRINT



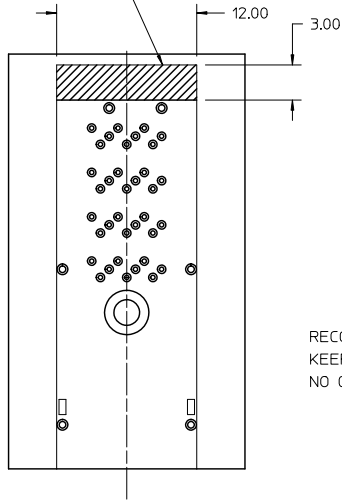
- NOTES:
1. RECOMMENDED DRILL SIZE FOR A 0.37 $\phi$  FINISHED PTH IS 0.48 $\phi$
  2. RECOMMENDED ANNULAR RING AROUND 0.37 $\phi$  FINISHED PTH IS 0.73 $\phi$
  3. MINIMUM RECOMMENDED SPACING: 14.00MM
  4. MINIMUM PCB THICKNESS: 1.57MM
  5. RECOMMENDED DRILL SIZE FOR A 0.57 $\phi$  FINISHED PTH IS 0.68 $\phi$
  6. RECOMMENDED ANNULAR RING AROUND A 0.57 $\phi$  FINISHED PTH IS 0.93 $\phi$
  7. CAGE STAND OFF AREA, NO TRACES ON SURFACE OF PCB IN THESE AREAS

SEE SHEET 1 EC NO: UCP2011-0739 D: DRINKLANG 2010/10/26 CHKD: MBANAK1S APPR: MBANAK1S 2011/03/18	QUALITY SYMBOLS	GENERAL TOLERANCES (UNLESS SPECIFIED)		DIMENSION STYLE		SCALE	DESIGN UNITS	THIRD ANGLE PROJECTION		
	$\nabla=0$ $\nabla=0$	mm	INCH	MM ONLY		4:1	METRIC			
		4 PLACES ±--- ±---		DRAWN BY	DATE	TITLE				
		3 PLACES ±--- ±---		KLANG	2009/03/04	IPASS PLUS HD 1X1 ASSEMBLY				
	2 PLACES ±0.13 ±---		CHECKED BY	DATE	MATERIAL NO.					
	1 PLACE ±0.25 ±---		APPROVED BY	DATE	DOCUMENT NO.					
	ANGULAR ±1/2°		MBANAK1S	2010/01/14	SD-76866-001					
			DRAFT WHERE APPLICABLE MUST REMAIN WITHIN DIMENSIONS		SEE CHART		MATERIAL NO.		SHEET NO.	
					C		SD-76866-001		4 OF 7	
			THIS DRAWING CONTAINS INFORMATION THAT IS PROPRIETARY TO MOLEX INCORPORATED AND SHOULD NOT BE USED WITHOUT WRITTEN PERMISSION							

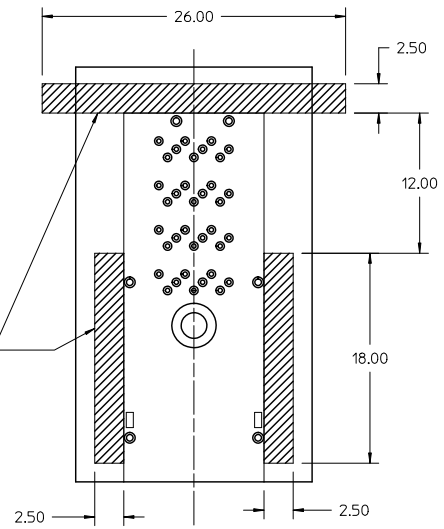
13 12 11 10 9 8 7 6 5 4 3 2 1

## RECOMMENDED TOOLING KEEP OUT AREAS

RECOMMENDED INSERTION TOOL  
KEEP OUT AREA  
NO COMPONENTS IN THIS AREA  
MORE THAN 7.50 mm TALL



RECOMMENDED EXTRACTION TOOL  
KEEP OUT AREA  
NO COMPONENTS IN THESE AREAS

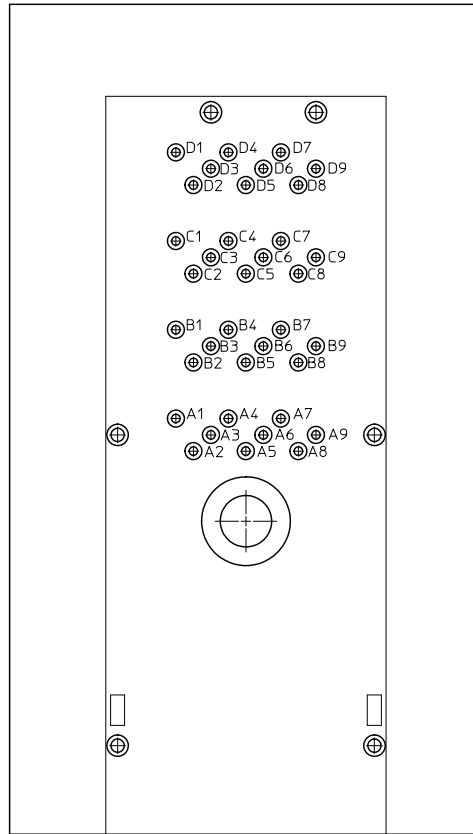


SEE SHEET 1 EC NO: UCP2011-0739 DRAWN BY: DRINKLANG 2010/10/26 CHKD: MBANAK1S APPR: MBANAK1S 2011/03/18	QUALITY SYMBOLS	GENERAL TOLERANCES (UNLESS SPECIFIED)		DIMENSION STYLE MM ONLY		SCALE 4:1	DESIGN UNITS METRIC	THIRD ANGLE PROJECTION
		mm	INCH	DRAWN BY KLANG	DATE 2009/03/04	TITLE IPASS PLUS HD 1X1 ASSEMBLY		
		4 PLACES ±---	±---	CHECKED BY	DATE	APPROVED BY MBANAK1S		
		3 PLACES ±---	±---	APPROVED BY DATE	2010/01/14	MOLEX INCORPORATED		
	2 PLACES ±0.13	±---	MATERIAL NO.	SD-76866-001	DOCUMENT NO.		SHEET NO. 5 OF 7	
	1 PLACE ±0.25	±---	DRAFT WHERE APPLICABLE MUST REMAIN WITHIN DIMENSIONS		SEE CHART		THIS DRAWING CONTAINS INFORMATION THAT IS PROPRIETARY TO MOLEX INCORPORATED AND SHOULD NOT BE USED WITHOUT WRITTEN PERMISSION	
	ANGULAR ±1/2°							

Id\_frame\_C.P. AM.T  
Rev. F 2009/06/18

12 11 10 9 8 7 6 5 4 3 2 1

13 12 11 10 9 8 7 6 5 4 3 2 1



SEE SHEET 1 EC NO: UCP2011-0739 D: DRINK KLANG 2010/10/26 CHKD: MBANAK1S APPR: MBANAK1S 2011/03/18	QUALITY SYMBOLS	GENERAL TOLERANCES (UNLESS SPECIFIED)		DIMENSION STYLE		SCALE	DESIGN UNITS	THIRD ANGLE PROJECTION	
	$\nabla=0$ $\nabla=0$	mm	INCH	MM ONLY		8:1	METRIC		
		4 PLACES ±---	±---	DRAWN BY	DATE	TITLE			
		3 PLACES ±---	±---	KLANG	2009/03/04	IPASS PLUS HD 1X1 ASSEMBLY			
	2 PLACES ±0.13	±---	CHECKED BY	DATE	APPROVED BY				
	1 PLACE ±0.25	±---	MBANAK1S	2010/01/14	DATE				
	ANGULAR ±1/2°			MATERIAL NO.		DOCUMENT NO.		SHEET NO.	
		DRAFT WHERE APPLICABLE MUST REMAIN WITHIN DIMENSIONS		SEE CHART		SD-76866-001		6 OF 7	
				SIZE		THIS DRAWING CONTAINS INFORMATION THAT IS PROPRIETARY TO MOLEX INCORPORATED AND SHOULD NOT BE USED WITHOUT WRITTEN PERMISSION			

Id\_frame\_C\_P\_AM.T  
Rev. E 2006/04/15

12 11 10 9 8 7 6 5 4 3 2 1

13 12 11 10 9 8 7 6 5 4 3 2 1

J

I

H

G

F

E

D

C

B

A

J

I

H

G

F

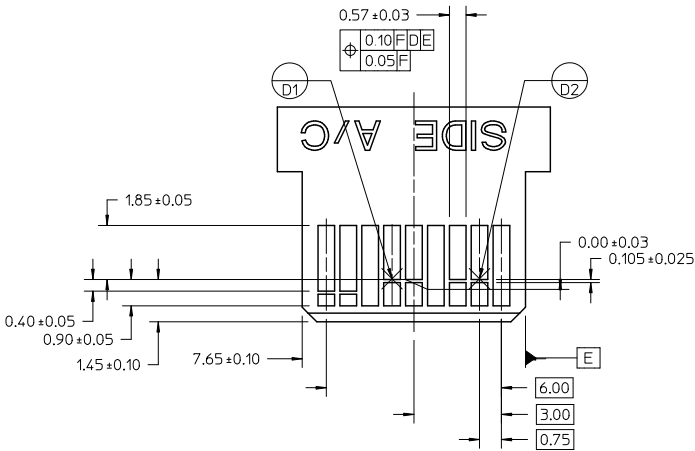
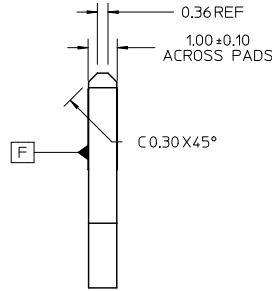
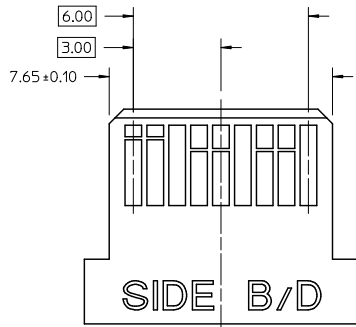
E

D

C

B

A



- NOTES:
- 0.05 MINIMUM KEEP OUT FOR SOLDER MASK AROUND ALL PADS
  - DATUM D TARGETS ARE DEFINED BY THE RESPECTIVE PAD CENTER LINES AND THE LEADING EDGE OF THE TARGET PADS

SEE SHEET 1 EC NO: UCP2011-0739 DRAWN BY: DRINKLANG 2010/10/26 CHKD: MBANAKIS APPR: MBANAKIS 2011/03/18 REV:	QUALITY SYMBOLS	GENERAL TOLERANCES (UNLESS SPECIFIED)	DIMENSION STYLE	SCALE	DESIGN UNITS	THIRD ANGLE PROJECTION
	▽=0 ▽=0	mm INCH 4 PLACES ± --- ± --- 3 PLACES ± --- ± --- 2 PLACES ± 0.13 ± --- 1 PLACE ± 0.25 ± --- ANGULAR ± 1/2°	MM ONLY	4:1	METRIC	
			DRAWN BY: KLANG DATE: 2009/03/04	TITLE: IPASS PLUS HD 1X1 ASSEMBLY		
			CHECKED BY: DATE:	APPROVED BY: MBANAKIS DATE: 2010/01/14		
		DRAFT WHERE APPLICABLE MUST REMAIN WITHIN DIMENSIONS	SIZE: SEE CHART	MATERIAL NO: MBANAKIS DOCUMENT NO: SD-76866-001		SHEET NO: 7 OF 7
THIS DRAWING CONTAINS INFORMATION THAT IS PROPRIETARY TO MOLEX INCORPORATED AND SHOULD NOT BE USED WITHOUT WRITTEN PERMISSION						

Id\_frame\_C\_P\_AM\_T Rev. E 2006/04/15

12 11 10 9 8 7 6 5 4 3 2 1