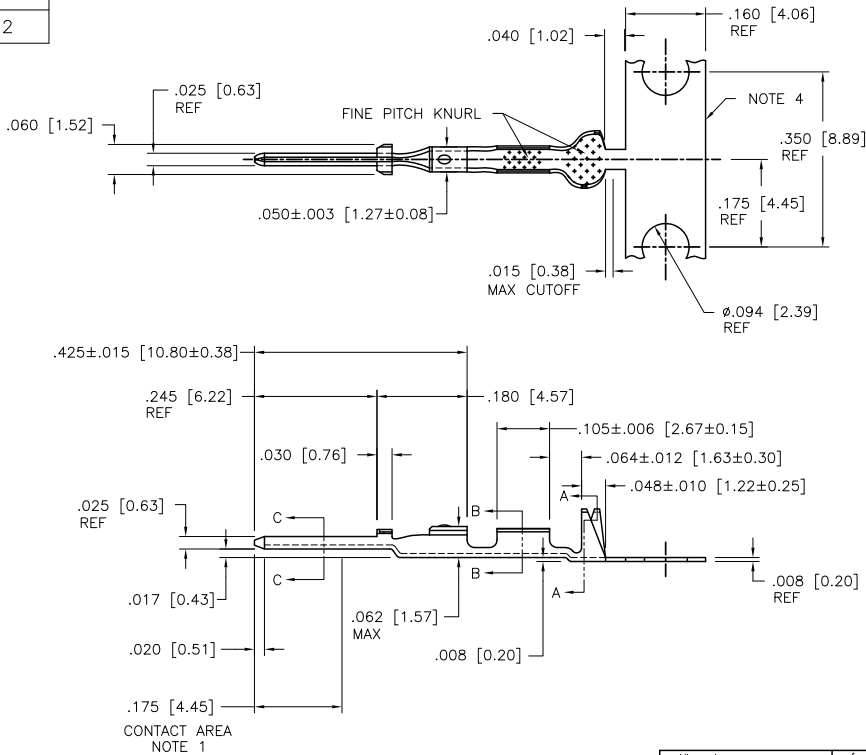


Copyright FCJ



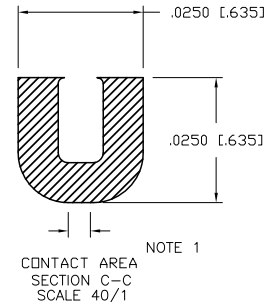
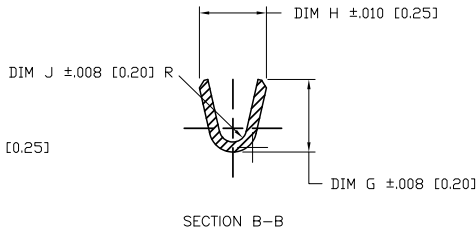
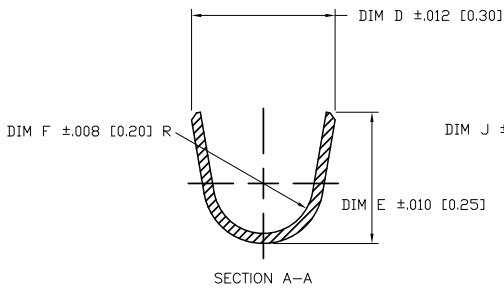
PRODUCT NUMBER  
SEE SHEET 2



mat'l. code	SEE TABLE		surface	tolerance	projection	product family
l/r	ec'n no	dr	date	tolerances unless otherwise specified		PV TERMINALS
H	v09-0453	HTB	2009-10-18	angles	INCH/MM	title
-	-	-	-	finishes	scale 4:1	DUPLEX CTW MALE PIN
C	v41706	SAR	1994-12-13	0° ± 2'		dwg no 76808
D	v04-1158	TAB	2004-12-06	dr	M. CLOUSER	1994-08-22
E	v05-0281	HTB	2005-04-14	engr	T. HANNA	1994-08-22
F	v06-0624	HTB	2006-06-30	chr	T. HANNA	1994-08-22
G	v08-0114	HTB	2008-04-01	appd	T. HANNA	1994-08-22
sheet	revision	H	H	H		
index	sheet	1	2	3		

PDM: Rev:H STATUS:Released Printed: Feb 20, 2010

PRODUCT NUMBER		LOOSE PIECE PRODUCT NUMBER	AWG	PLATING	DIM D	DIM E	DIM F	DIM G	DIM H	DIM J
REELED FOR APPLICATION MACHINES FEEDING										
RIGHT - LEFT	LEFT - RIGHT									
76808-001	76808-004	76808-007	O B S O L E T E							
76808-001LF	76808-004LF	76808-007LF	28-32	NOTE 7	.115 [2.92]	.105 [2.67]	.040 [1.02]	.058 [1.47]	.054 [1.37]	.011 [0.28]
76808-002	76808-005	76808-008	O B S O L E T E							
76808-002LF	76808-005LF	76808-008LF (OBS)	22-26	NOTE 7	.139 [3.53]	.120 [3.05]	.050 [1.27]	.065 [1.65]	.070 [1.78]	.017 [0.43]
76808-003	76808-006	76808-009	O B S O L E T E							
76808-003LF	76808-006LF	76808-009LF	18-20	NOTE 7	.139 [3.53]	.120 [3.05]	.050 [1.27]	.083 [2.11]	.104 [2.64]	.021 [0.53]



NOTES:

- ① PLATING: 50u"/1.27u MIN. Ni UNDERPLATE OVER ENTIRE TERMINAL. OVERPLATE 30u"/0.76 MIN. Au IN CONTACT AREA. 50u"/1.27u MIN. TIN-LEAD IN CRIMPING AREA.
2. TERMINAL MAY BE USED WITH MINI LATCH HOUSING.
3. APPLICABLE SPECIFICATION:  
A. BUS-12-098 PRODUCT SPECIFICATION.  
B. TA-211 CRIMP SPECIFICATION.
- ④ FOR MANUFACTURING PURPOSES ONLY.
- ⑤ PRODUCT MEETS EUROPEAN UNION DIRECTIVES AND OTHER COUNTRY REGULATIONS AS DESCRIBED IN GS-22-008.
6. THIS PRODUCT IS NOT INTENDED TO BE EXPOSED TO MANUFACTURING SOLDERING PROCESSES.
- ⑦ PLATING: 50u"/1.27u MIN. Ni UNDERPLATE OVER ENTIRE TERMINAL. OVERPLATE 30u"/0.76 MIN. Au IN CONTACT AREA. 50u"/1.27u MIN. TIN IN CRIMPING AREA.

mat'l. code	SEE TABLE	surface	tolerance	projection	product family
ltr	ecrn no	dr	date	INCH/MM	PV TERMINALS
tolerances unless otherwise specified				scale 10:1	title
angles				INCH/MM	DUPLEX CTW MALE PIN
dr				scale 10:1	dwg no
engr				FCJ	76808
chr				sheet 2 of 3	A4
appd				type	CUSTOMER Drawing
sheet index	revision sheet				

Copyright FCJ

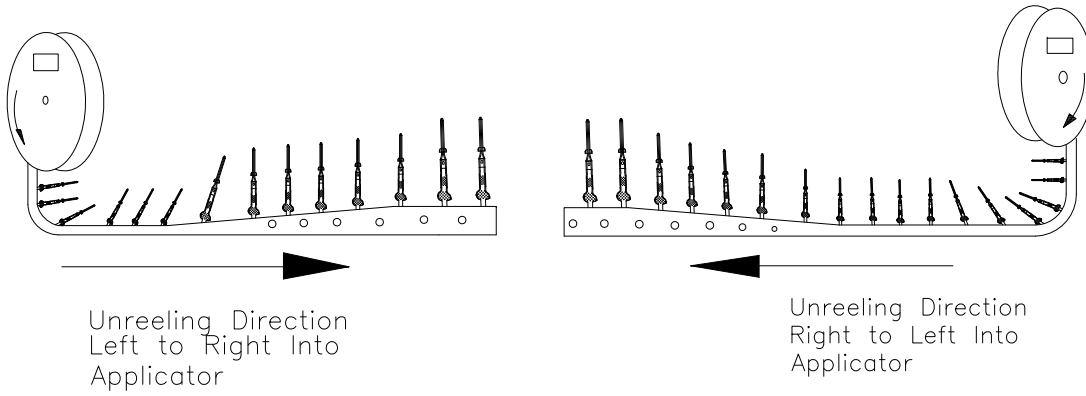


1 | 2

3

4

PRODUCT NUMBER  
SEE SHEET 2



mat'l. code		surface		tolerance		projection		product family	
SEE TABLE		✓						PV TERMINALS	
ltr	ec'n no	dr	date	tolerances unless otherwise specified		INCH/MM		title	
H				angles	XXX+01/XX+3			DUPLEX CTW MALE PIN	
				0°±2'	XXX+005/XXX+18	scale 1:1		dwg no	
					XXXX+0020/XXX+051			76808	
		dr	M. CLOUSER	1994-08-22				sheet 3 of 3	
		engr	T. HANNA	1994-08-22				size A4	
		chr	T. HANNA	1994-08-22				type	
		appd	T. HANNA	1994-08-22				CUSTOMER Drawing	
sheet index	revision sheet								

form A4mmXLC

1

2

3

4