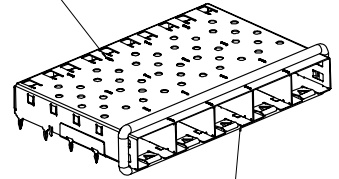
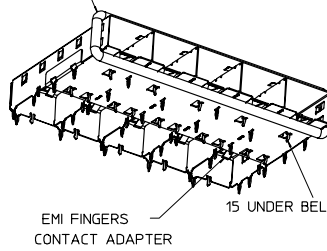
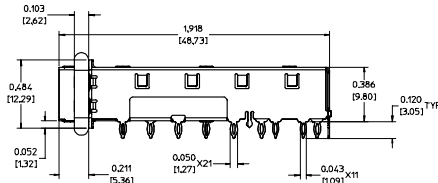


360° ELASTOMER EMI GASKET
COMPLIES WITH (SFP) MSA
BOARD AND BEZEL LOCATIONS

INNER WALL TABS ARE COINED
OVER BASE AND COVER FOR RIGIDITY



DIMENSIONS OF EACH INNER CAGE DESIGNED
TO FUNCTION WITH SMALL FORM-FACTOR
PLUGGABLE (SFP) TRANSCEIVER

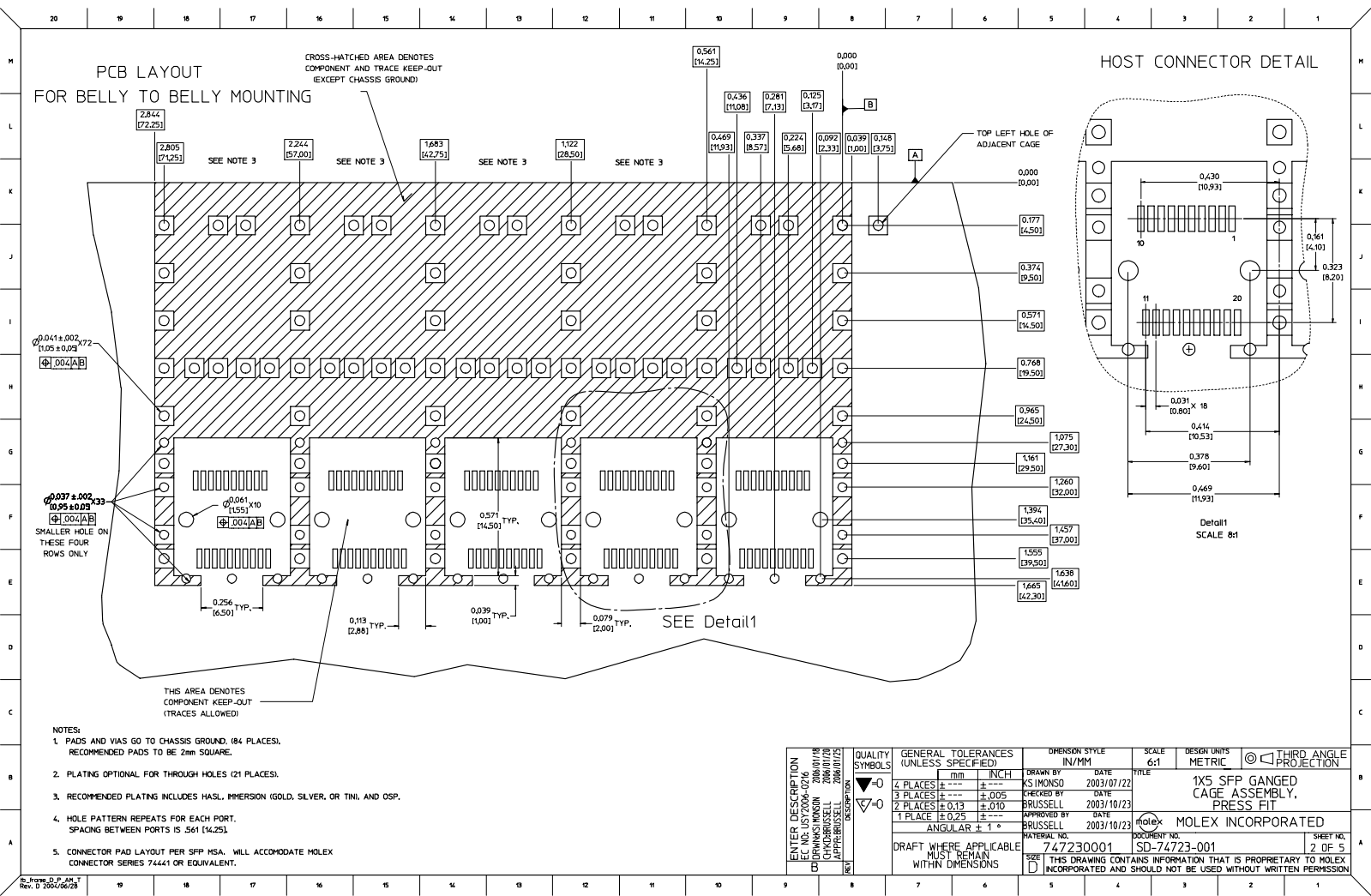


NOTES:

- PRESS FIT LEGS .120" LONG-
0.062 [1.57] MINIMUM PCB THICKNESS FOR SINGLE SIDED USE.
0.118 [3.00] MINIMUM PCB THICKNESS FOR BELLY TO BELLY USE.
- MATERIAL: COPPER ALLOY
PLATING: NONE

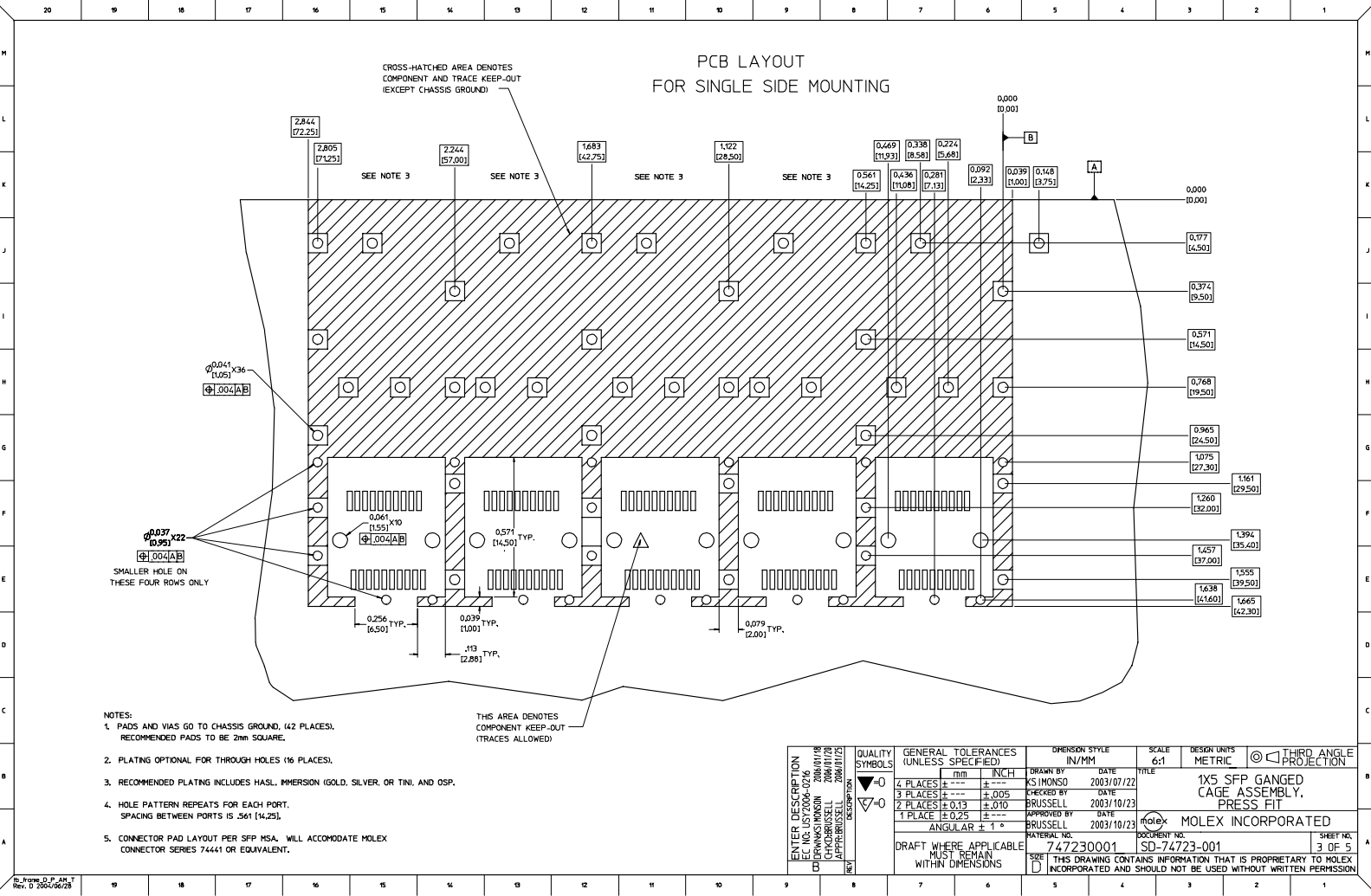
NOTE: A NICKEL PLATED VERSION OF THIS ASSEMBLY IS AVAILABLE.
REFER TO DOCUMENT SD-74723-004.
- REFERENCE DOCUMENTS:
PRODUCT SPECIFICATION: PS-74728-000
COSMETIC SPECIFICATIONS: WI-HP-7-2774 AND WI-HPA-7-0093
- MATES WITH SERIES 74729, LIGHT PIPE COVER ASSEMBLY.
- THIS PART MEETS THE RESTRICTION OF HAZARDOUS SUBSTANCES IN
ELECTRICAL AND ELECTRONIC EQUIPMENT (ROHS) DIRECTIVE (2002/95/EC).

ENTER DESCRIPTION IEC NO. LIST 7004-0716 DRINKS/MONSON 2006/01/18 CHROBRUSSELL 2006/01/28 APPROVED FOR RELEASE (DESCRIPTION)	QUALITY SYMBOLS	GENERAL TOLERANCES (UNLESS SPECIFIED)	DIMENSION STYLE	SCALE	DESIGN UNITS	THIRD ANGLE PROJECTION	
	4 PLACES ± .005 ± .005 3 PLACES ± .010 ± .010 2 PLACES ± 0.13 ± .010 1 PLACE ± 0.25 ± .010 ANGULAR ± 1°	mm INCH DRAWN BY: KS MONSO CHECKED BY: BRUSSELL APPROVED BY: BRUSSELL DATE: 2003/07/22 DATE: 2003/10/23 DATE: 2003/10/23	IN/MM 3:1	METRIC	TITLE: 1X5 SFP GANGED CAGE ASSEMBLY, PRESS FIT MATERIAL NO: 747230001 DOCUMENT NO: SD-74723-001	MOLEX INCORPORATED	SHEET NO: 1 OF 5
	DRAFT WHERE APPLICABLE MUST REMAIN WITHIN DIMENSIONS	THIS DRAWING CONTAINS INFORMATION THAT IS PROPRIETARY TO MOLEX INCORPORATED AND SHOULD NOT BE USED WITHOUT WRITTEN PERMISSION					



QUALITY SYMBOLS	GENERAL TOLERANCES (UNLESS SPECIFIED)		DIMENSION STYLE		SCALE	DESIGN UNITS	THIRD ANGLE
	mm	INCH	IN/MM	DATE	6:1	METRIC	PROJECTION
▽=0	4 PLACES ±---	±---	DRAWN BY	KS HONGSO	2003/07/22	TITLE	1X5 SFP GANGED CAGE ASSEMBLY, PRESS FIT
▽=0	3 PLACES ±---	±.005	CHECKED BY	BRUSSELL	2003/10/23	DRAWN BY	KS HONGSO
▽=0	2 PLACES ±0.13	±.010	APPROVED BY	BRUSSELL	2003/10/23	DATE	2003/10/23
▽=0	1 PLACE ±0.25	±---	APPROVED BY	BRUSSELL	2003/10/23	DATE	2003/10/23
	ANGULAR ± 1°	±---	PATERIAL NO.	747230001		DOCUMENT NO.	SD-74723-001
	DRAFT WHERE APPLICABLE MUST REMAIN WITHIN DIMENSIONS		SIZE	D		THIS DRAWING CONTAINS INFORMATION THAT IS PROPRIETARY TO MOLEX INCORPORATED AND SHOULD NOT BE USED WITHOUT WRITTEN PERMISSION	

PCB LAYOUT FOR SINGLE SIDE MOUNTING

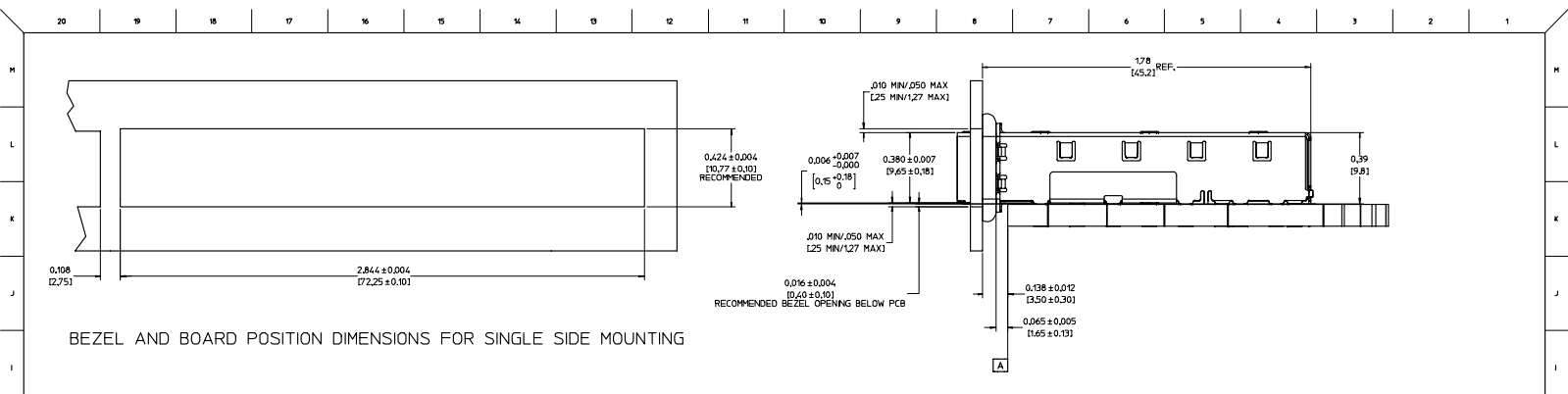


NOTES:

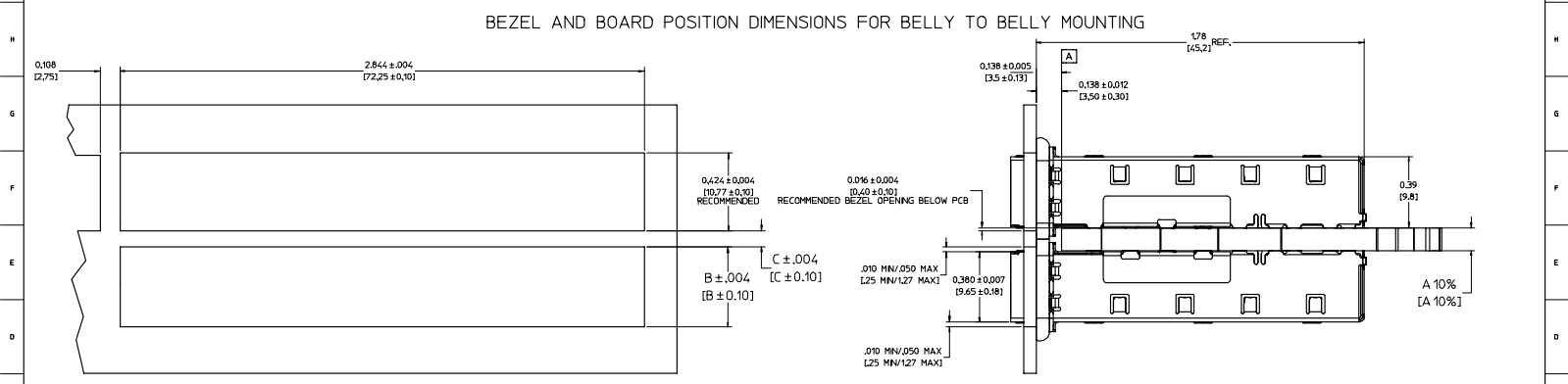
- PADS AND VIAS GO TO CHASSIS GROUND. (42 PLACES).
RECOMMENDED PADS TO BE 2mm SQUARE.
- PLATING OPTIONAL FOR THROUGH HOLES (16 PLACES).
- RECOMMENDED PLATING INCLUDES HASL, IMMERSION (GOLD, SILVER, OR TIN), AND OSP.
- HOLE PATTERN REPEATS FOR EACH PORT.
SPACING BETWEEN PORTS IS .561 [14.25].
- CONNECTOR PAD LAYOUT PER SFP HSA. WILL ACCOMMODATE MOLEX CONNECTOR SERIES 74441 OR EQUIVALENT.

THIS AREA DENOTES COMPONENT KEEP-OUT (TRACES ALLOWED)

ENTER DESCRIPTION EC NO. LST2004-0216 CHROBRUSSELL 2004/07/28 APPROVED DESCRIPTION	QUALITY SYMBOLS	GENERAL TOLERANCES (UNLESS SPECIFIED)	DIMENSION STYLE	SCALE	DESIGN UNITS	THIRD ANGLE PROJECTION
	▽=0 ▽=0	mm INCH 4 PLACES ± --- ± --- 3 PLACES ± --- ± .005 2 PLACES ± 0.13 ± .010 1 PLACE ± 0.25 ± --- ANGULAR ± 1 °	IN/MM DRAWN BY DATE KS HONSO 2003/07/22 CHECKED BY DATE BRUSSELL 2003/10/23 APPROVED BY DATE BRUSSELL 2003/10/23	6:1	METRIC	◎ THIRD ANGLE PROJECTION
	DRAFT WHERE APPLICABLE MUST REMAIN WITHIN DIMENSIONS	MATERIAL NO. 747230001	DOCUMENT NO. SD-74723-001	MOLEX INCORPORATED		
		SHEET NO. 3 OF 5	THIS DRAWING CONTAINS INFORMATION THAT IS PROPRIETARY TO MOLEX INCORPORATED AND SHOULD NOT BE USED WITHOUT WRITTEN PERMISSION			



BEZEL AND BOARD POSITION DIMENSIONS FOR SINGLE SIDE MOUNTING



BEZEL AND BOARD POSITION DIMENSIONS FOR BELLY TO BELLY MOUNTING

NOTE: FOR A GIVEN BOARD THICKNESS (A), DIMENSIONS (B) AND (C) ARE DIRECTLY AFFECTED.

USE RECOMMENDED DIMENSIONS AND TOLERANCES TO AID IN DEVELOPING BEZEL OPENING.

FOR EXAMPLE USING A BOARD THICKNESS OF .125" THE RECOMMENDED VALUES WOULD BE:

- A= .125/3.18 ± 10%
- B= .434/11.03 ± .004
- C= .088/2.23 ± .004

ENTER DESCRIPTION EC NO. LST2004-0216 CHROBRISEL 2006/07/28 APPROVED FOR RELEASE	QUALITY SYMBOLS	GENERAL TOLERANCES (UNLESS SPECIFIED)	DIMENSION STYLE	SCALE	DESIGN UNITS	THIRD ANGLE PROJECTION	
		m/m INCH	IN/MM	4:1	METRIC		
	4 PLACES ± --- ± ---	3 PLACES ± --- ± .005	2 PLACES ± 0.13 ± .010	1 PLACE ± 0.25 ± ---	DRAWN BY KS MONSO	DATE 2003/07/22	TITLE 1X5 SFP GANGED CAGE ASSEMBLY, PRESS FIT
	ANGULAR ± 1 °	DRAFT WHERE APPLICABLE MUST REMAIN WITHIN DIMENSIONS	APPROVED BY BRUSSELL	DATE 2003/10/23	WATERMARK NO. 747230001	DOCUMENT NO. SD-74723-001	SHEET NO. 4 OF 5

DATE	REV	CHANGES	COMMENTS
10/23/2003	A	INITIAL RELEASE	N/A
10/22/2005	B	ADDED PCB AND BEZEL LAYOUTS. UPDATED NOTES.	DOCUMENT CHANGE ONLY

ENTER DESCRIPTION EC NO. US72004-0216 DRWINSONSON 2006/01/18 CHROBRUSSELL 2006/01/28 APPROVED BY DESCRIPTION	QUALITY SYMBOLS	GENERAL TOLERANCES (UNLESS SPECIFIED)	DIMENSION STYLE	SCALE	DESIGN UNITS	THIRD ANGLE PROJECTION
	▽=0	m/m INCH	IN/MM	1:1	METRIC	☉
	▽=0	4 PLACES ± --- ± ---	DRAWN BY DATE	TITLE		
	▽=0	3 PLACES ± --- ± 0.05	KS MONSO 2003/07/22	1X5 SFP GANGED CAGE ASSEMBLY, PRESS FIT		
▽=0	2 PLACES ± 0.13 ± 0.10	CHECKED BY DATE	MOLEX INCORPORATED			
▽=0	1 PLACE ± 0.25 ± ---	BRUSSELL 2003/10/23	MATERIAL NO. 747230001			
▽=0	ANGULAR ± 1 °	APPROVED BY DATE	DOCUMENT NO. SD-74723-001			
▽=0	DRAFT WHERE APPLICABLE MUST REMAIN WITHIN DIMENSIONS	BRUSSELL 2003/10/23	SHEET NO. 5 OF 5			
▽=0			THIS DRAWING CONTAINS INFORMATION THAT IS PROPRIETARY TO MOLEX INCORPORATED AND SHOULD NOT BE USED WITHOUT WRITTEN PERMISSION			