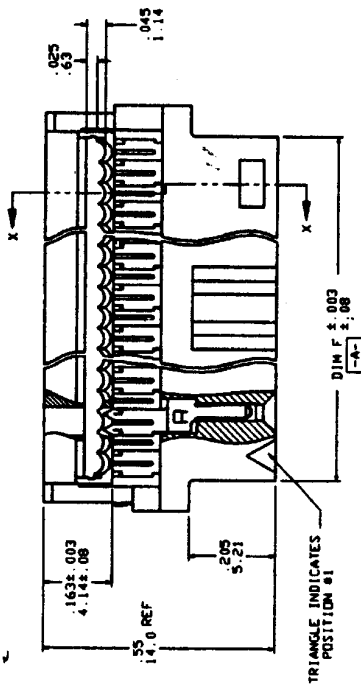
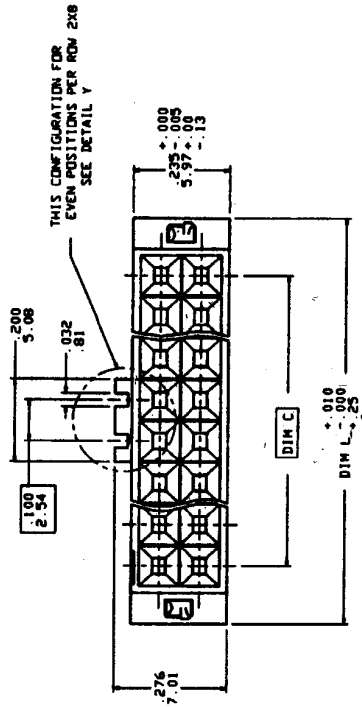
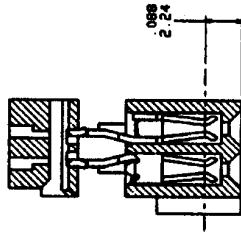


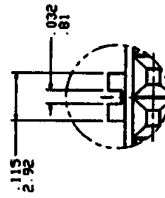
PRODUCT NUMBER
SEE TABLE



SECTION X-X



THIS CONFIGURATION FOR
EVEN POSITIONS PER ROW 2X8
SEE DETAIL Y



THIS CONFIGURATION FOR
ODD POSITIONS PER ROW 2X5
DETAIL Y

REVISIONS		SHEET INDEX		ISSUE		T H	
REV	ESN/DRWF	BY	DATE	SH NO.	SH NO.	1	2
1		RLS	7/28/07				
2		WLD	7/28/07				
3		WLD	7/28/07				
4		WLD	7/28/07				
5		WLD	7/28/07				
6		WLD	7/28/07				
7		WLD	7/28/07				
8		WLD	7/28/07				
9		WLD	7/28/07				
10		WLD	7/28/07				
11		WLD	7/28/07				
12		WLD	7/28/07				
13		WLD	7/28/07				
14		WLD	7/28/07				
15		WLD	7/28/07				
16		WLD	7/28/07				
17		WLD	7/28/07				
18		WLD	7/28/07				
19		WLD	7/28/07				
20		WLD	7/28/07				
21		WLD	7/28/07				
22		WLD	7/28/07				
23		WLD	7/28/07				
24		WLD	7/28/07				
25		WLD	7/28/07				
26		WLD	7/28/07				
27		WLD	7/28/07				
28		WLD	7/28/07				
29		WLD	7/28/07				
30		WLD	7/28/07				
31		WLD	7/28/07				
32		WLD	7/28/07				
33		WLD	7/28/07				
34		WLD	7/28/07				
35		WLD	7/28/07				
36		WLD	7/28/07				
37		WLD	7/28/07				
38		WLD	7/28/07				
39		WLD	7/28/07				
40		WLD	7/28/07				
41		WLD	7/28/07				
42		WLD	7/28/07				
43		WLD	7/28/07				
44		WLD	7/28/07				
45		WLD	7/28/07				
46		WLD	7/28/07				
47		WLD	7/28/07				
48		WLD	7/28/07				
49		WLD	7/28/07				
50		WLD	7/28/07				
51		WLD	7/28/07				
52		WLD	7/28/07				
53		WLD	7/28/07				
54		WLD	7/28/07				
55		WLD	7/28/07				
56		WLD	7/28/07				
57		WLD	7/28/07				
58		WLD	7/28/07				
59		WLD	7/28/07				
60		WLD	7/28/07				
61		WLD	7/28/07				
62		WLD	7/28/07				
63		WLD	7/28/07				
64		WLD	7/28/07				
65		WLD	7/28/07				
66		WLD	7/28/07				
67		WLD	7/28/07				
68		WLD	7/28/07				
69		WLD	7/28/07				
70		WLD	7/28/07				
71		WLD	7/28/07				
72		WLD	7/28/07				
73		WLD	7/28/07				
74		WLD	7/28/07				
75		WLD	7/28/07				
76		WLD	7/28/07				
77		WLD	7/28/07				
78		WLD	7/28/07				
79		WLD	7/28/07				
80		WLD	7/28/07				
81		WLD	7/28/07				
82		WLD	7/28/07				
83		WLD	7/28/07				
84		WLD	7/28/07				
85		WLD	7/28/07				
86		WLD	7/28/07				
87		WLD	7/28/07				
88		WLD	7/28/07				
89		WLD	7/28/07				
90		WLD	7/28/07				
91		WLD	7/28/07				
92		WLD	7/28/07				
93		WLD	7/28/07				
94		WLD	7/28/07				
95		WLD	7/28/07				
96		WLD	7/28/07				
97		WLD	7/28/07				
98		WLD	7/28/07				
99		WLD	7/28/07				
100		WLD	7/28/07				

www.fciconnect.com
FCI
 QUICKIE BACKPLANE
 ASSEMBLY
 810 66245 1 of 2

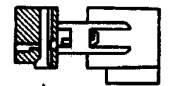
NOTE: THIS DOCUMENT IS THE PROPERTY OF FCI. IT IS TO BE KEPT IN CONFIDENTIALITY AND NOT TO BE REPRODUCED OR TRANSMITTED IN ANY FORM OR BY ANY MEANS, ELECTRONIC OR MECHANICAL, INCLUDING PHOTOCOPYING, RECORDING, OR BY ANY INFORMATION STORAGE AND RETRIEVAL SYSTEM. ANY UNAUTHORIZED REPRODUCTION OR TRANSMISSION OF THIS DOCUMENT IS STRICTLY PROHIBITED.

PRODUCT NUMBER	SIZE	DIM C	DIM F	DIM L	DASH NO	COVER ORIENTATION	BASE STYLE
66245-110	2X5	.400/10.16	.530/13.46	.680/17.27	-0XX	RIGHT	PLAIN
-X14	2X7	.600/15.24	.730/18.54	.880/22.35	-1XX	LEFT	PLAIN
-X16	2X8	.700/17.78	.830/21.08	.980/24.89	-2XX	RIGHT	POLARIZED
-X20	2X10	.900/22.86	1.030/26.16	1.180/29.97	-3XX	LEFT	POLARIZED
-X24	2X12	1.100/27.94	1.230/31.24	1.380/35.10			
-X26	2X13	1.200/30.48	1.330/33.78	1.480/37.59			
-X30	2X15	1.400/35.56	1.530/38.96	1.680/42.70			
-X34	2X17	1.600/40.64	1.730/43.94	1.880/47.75			
-X36	2X18	1.700/43.18	1.830/46.48	1.980/50.30			
-X40	2X20	1.900/48.26	2.030/51.56	2.180/55.37			
-X44	2X22	2.100/53.34	2.230/56.54	2.380/60.50			
-X50	2X25	2.400/60.96	2.530/64.26	2.680/68.07			
-X56	2X30	2.700/68.58	2.830/71.88	2.980/75.78			
-X60	2X30	2.900/73.66	3.030/76.96	3.180/80.77			
66245-164		UNASSIGNED					

- NOTES:
1. TERMINAL MATERIAL: FULL HARD PHOS. BRONZE ALLOY, UNS-CS1000.
 2. TERMINAL PLATING: 50u"/1.27u MIN NI UNDERPLATE OVER ENTIRE TERMINAL AND 30u"/.76u MIN Au IN CONTACT AREA WITH AG FLASH ON REMAINDER OF TERMINAL.
 3. MOLDING MATERIAL: BASE & COVER- GLASS FILLED POLYESTER, FLAME RETARDANT PER UL94V-0, COLOR- BLUE.
 4. CONNECTOR ASSYS PACKAGED INDIVIDUALLY, 10 PER CARD, THEN BOXED IN LOTS OF 100.
 5. ADD "LF" SUFFIX AT THE END OF PART NUMBER FOR LEAD FREE OPTION.
 6. IF "LF" P/N THE PRODUCT MEETS EUROPEAN UNION DIRECTIVES AND OTHER COUNTRY REGULATION AS DESCRIBED IN GS-22-006.
 7. THE HOUSING WILL WITHSTAND EXPOSURE TO 260° PEAK TEMPERATURE FOR 15 SECONDS IN A WAVE SOLDER PROCESS.



LEFT ASSY



RIGHT ASSY

COVER ORIENTATION

REV ECH/DOBT		BY	DATE	SHEET INDEX	ISSUE SH NO	1														
DESIGNED BY																				
CHECKED BY																				
APPROVED BY																				
DATE																				
DRAWN BY																				
DATE																				
MATERIALS																				
QUANTITY																				
UNIT PRICE																				
TOTAL PRICE																				
REVISIONS																				
DATE																				
BY																				
REASON																				

FCJ www.fcjconnect.com

QUICKIE BACKPLANE
PRE-LOAD ASSEMBLY

8.1 D 66245 2 of 2