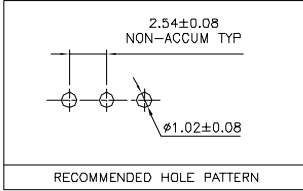
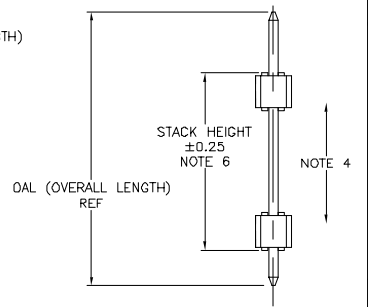
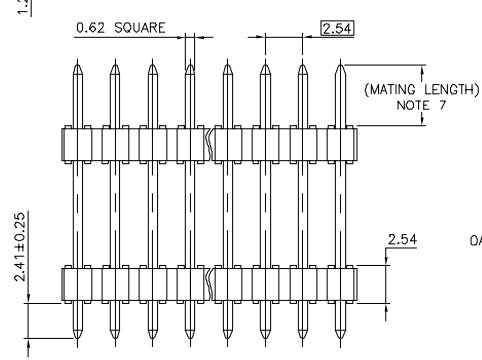
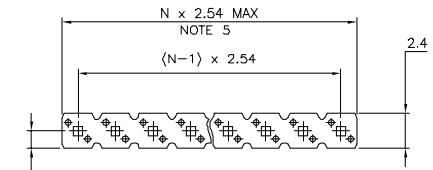


- NOTES:**
- HOUSING MAT'L : HIGH TEMPERATURE THERMOPLASTIC. UL94V-0 COLOR: BLACK
  - PIN MATERIAL : PHOSPHOR BRONZE
  - PRODUCT PACKAGED IN PLASTIC BOX
  - 9N MIN RETENTION IN EITHER DIRECTION
  - TO DETERMINE DIMENSIONS :  
N = NUMBER OF POSITIONS PER ROW  
EXAMPLE : 8 POS PER ROW, N x 2.54 = 20.32mm
  - XXXX = MILLIMETERS  
SPECIFY MILLIMETERS  
8mm MIN TO 25.0mm MAX AVAILABLE  
IN 0.5mm INCREMENT  
EXAMPLE FOR STACK HEIGHT:  $1 \underline{2} \underline{5} \underline{0}$  = 12.5mm
  - MATING LENGTH = (OAL)-(2.41)-(STACK HEIGHT)
  - RoHS COMPATIBLE PRODUCT SPECIFICATIONS**
    - PLATING:**
      - "LF" MEANS THE PRODUCT IS LEAD-FREE, 2µm MINIMUM MATTE TIN OVER 1.27µm MINIMUM NICKEL UNDERPLATE.
    - MANUFACTURING PROCESS COMPATIBILITY**
      - THE HOUSING WILL WITHSTAND EXPOSURE TO 260°C ±5°C SOLDER BATH TEMPERATURE FOR 5 SECONDS IN A WAVE SOLDER APPLICATION WITH A 1.6mm MIN THICK CIRCUIT BOARD.
    - LABELLING:**
      - MEETS PACKAGING SPECS AS PER GS-14-920
    - THIS PRODUCT MEETS EUROPEAN UNION DIRECTIVES AND OTHER COUNTRY REGULATIONS AS DESCRIBED IN GS-22-008

| PIN STYLE | OAL   |
|-----------|-------|
| 01        | 12.2  |
| 02        | 13.5  |
| 03        | 15.9  |
| 04        | 16.76 |
| 05        | 17.65 |
| 06        | 18.91 |
| 07        | 20.96 |
| 08        | 23.5  |
| 09        | 26.04 |
| 10        | 28.58 |
| 11        | 31.12 |
| 12        | 33.66 |
| 13        | 34    |
| 14        | 26.42 |
| 15        | 16.56 |
| 16        | 36.2  |
| 18        | 28    |



| mat'l. code |                | surface  | tolerance        | projection                            | product family             |          |
|-------------|----------------|----------|------------------|---------------------------------------|----------------------------|----------|
| SEE NOTES   |                | ISO 1302 | ISO 486 ISO 1101 | mm                                    | BERGSTIK                   |          |
| Ltr         | ecn no         | dr       | date             | tolerances unless otherwise specified | title                      |          |
| A           | F10119         | DLE      | 01.01.24         | xxx ±0.3                              | UNSHR.HEADER<br>STR SR TMT |          |
| B           | F10305         | JCO      | 01.05.03         | xxx ±0.13                             |                            |          |
| C           | F03-0227       | DLE      | 03.06.13         | xxx ±0.05                             |                            |          |
| D           | F04-0385       | LMU      | 04.12.16         | dr D.LE                               |                            | 01.01.24 |
| E           | F06-0196       | LMU      | 06.06.13         | enrg J.M.C                            |                            | 01.01.24 |
|             |                |          |                  | chr J.M.C                             | 01.01.24                   |          |
|             |                |          |                  | appd J.F.N                            | 01.01.24                   |          |
| sheet index | revision sheet |          |                  |                                       |                            |          |