

PRODUCT NUMBER
5 2 6 0 1 - X X X - X X X X X LF

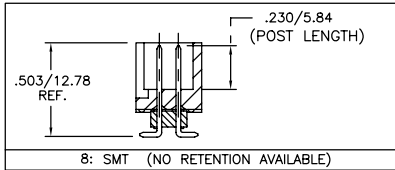
PLATING

S=15µm[0.38µm]GOLD ON CONTACT AREA (NOTE 13)
100µm[2.54µm]TIN ON TAIL
G=30µm[0.76µm]GOLD ON CONTACT AREA (NOTE 13)
100µm[2.54µm]TIN ON TAIL

LEAD FREE OPTION
NOTE 10,11,12
PACKAGE NOTE 5
RETENTION
R= RETENTIVE LEG (NOTE 6)
POLARIZATION
NOTE 9

TAIL		
+	.090/2.29	-OBS.
±	.142/2.84	-OBS.
4	.120/3.05	
6	.150/3.81	
-	.675/17.15	-OBS.
8	SMT	

TOTAL POSITIONS	HDR. STYLE
10	2 x 5 B
14	2 x 7 C
16	2 x 8 D
20	2 x 10 D
26	2 x 13 D
30	2 x 15 D
34	2 x 17 D
40	2 x 20 D
44	2 x 22 D
50	2 x 25 D
60	2 x 30 D



NOTES:

- HOUSING MAT'L: HIGH TEMPERATURE THERMOPLASTIC. UL94V-0 COLOR: BLACK OR MINERAL FILLED LCP FLAME RETARDANT PER UL-94V-0. COLOR: BLACK.
- PIN MATERIAL: PHOSPHOR-BRONZE
- TO DETERMINE DIMENSIONS:
N = NUMBER OF POSITIONS PER ROW
EXAMPLE: 10 POS.,(N-1) x .100[2.54]=.900[22.86]
- 3 LBS./1.36 KG MIN. RETENTION
- PACKAGED IN TRAYS,
PART NUMBER FOLLOWS BY "T" SUFFIX ARE PACKAGED TAPE ON REEL WITH PACK-UP INSTALLED. VACUUM CAP TO BE CENTRALLY LOCATED REGARDLESS OF NUMBER OF POSITIONS (SHEET 3)
- RETENTIVE LEG APPLICABLE TO TAIL LENGTHS .125/3.18 MAX. 5LB/2.3KG MAX INSERTION FORCE AND .25LB/1KG MIN RETENTION FORCE PER RETENTIVE PIN USING .062/1.57 THICK CIRCUIT BOARD AND RECOMMENDED HOLE PATTERN. RETENTIVE LOCATION AT THE DISCRETION OF THE MANUFACTURER. RETENTION PIN MAY BE SHIFTED TO NEXT POSITION.
- OMIT FROM PRODUCT NUMBER IF THIS FEATURE IS NOT APPLICABLE.
- UNDERPLATING: 50µm/1.27µm Ni.
- FOR POLARIZATION SPECIFY POSITION NUMBER (i.e. 03 = PIN 3) TO OMIT PIN. OMIT FROM PRODUCT NUMBER IF THIS FEATURE IS NOT APPLICABLE.
- ADD "LF" SUFFIX AT THE END OF PART NUMBER FOR LEAD FREE OPTION.
- THE HOUSING WILL WITHSTAND EXPOSURE TO 260°C PEAK TEMPERATURE FOR 15 SECONDS IN A WAVE SOLDER APPLICATION WITH A 1.5mm MINIMUM THICK CIRCUIT BOARD. SEE APPLICATION NOTES/PROCEDURES IF THEY ARE AVAILABLE.
- THE HOUSING WILL WITHSTAND EXPOSURE TO 260°C PEAK TEMPERATURE FOR 20 SECONDS IN A CONVECTION, INFRA-RED OR VAPOR PHASE REFLOW OVEN. SEE APPLICATION NOTES/PROCEDURES IF THEY ARE AVAILABLE.
- THIS PRODUCT MEETS EUROPEAN UNION DIRECTIVES AND OTHER COUNTRY REGULATION AS DESCRIBED IN GS-22-008.
- PLATING OPTIONS:
MAY BE EITHER GOLD OR GXT PLATED AT MANUFACTURER'S OPTION.

www.fciconnect.com		surface ISO 1302	tolerance ISO 406 ISO 1101	projection	MM
Tolerances unless otherwise specified		ANGULAR	LINEAR	size A4	Scale 1:1
Dr	D.INGRAM	07/07/99	0° ±2.0°	ECN	NID-0327
Eng	L.GREEN	07/12/99		Product family	QUICKIE
Chr	L.GREEN	07/12/99		Spec ref	
Appr	L.GREEN	07/21/99		Rev.	X
0.100/2.54MM LOW PROFILE SHROUDED VERTICAL HEADER				52601	sheet 1 of 3
catalog no		CUSTOMER			

rev	ecn no	dr	date
S	M08-0117	MHT	04/22/08
T	M08-0118	MHT	04/24/08
U	M08-0237	MHT	05/25/08
V	M08-0261	MHT	08/19/08
W	M08-0279	MHT	09/30/08
X	NID-0327	AZH	11/04/10

REV 7 - 2004-07

PDM: Rev:X

STATUS Released

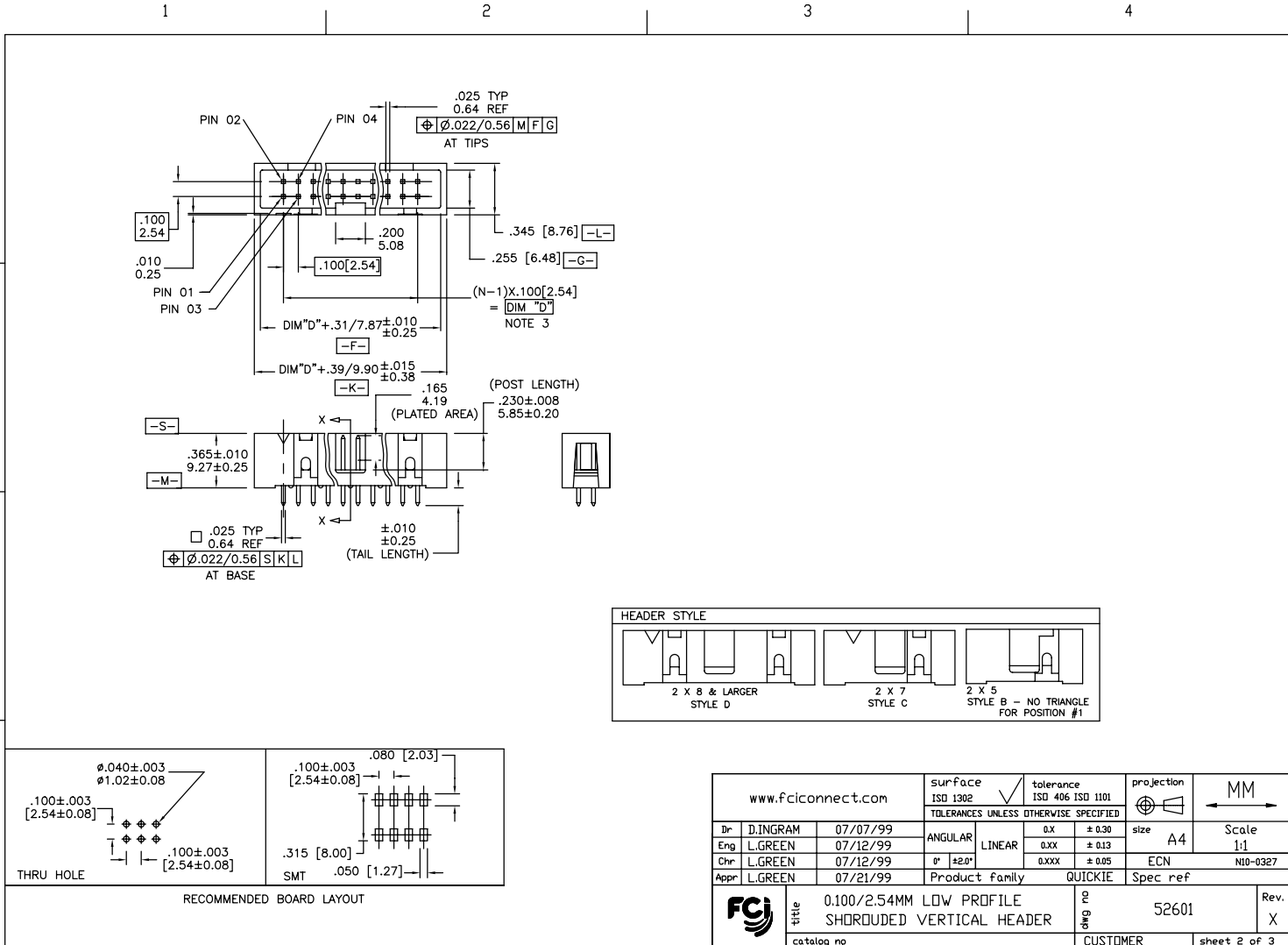
4 Printed: Apr 12, 2011

1

2



Copyright FCI.

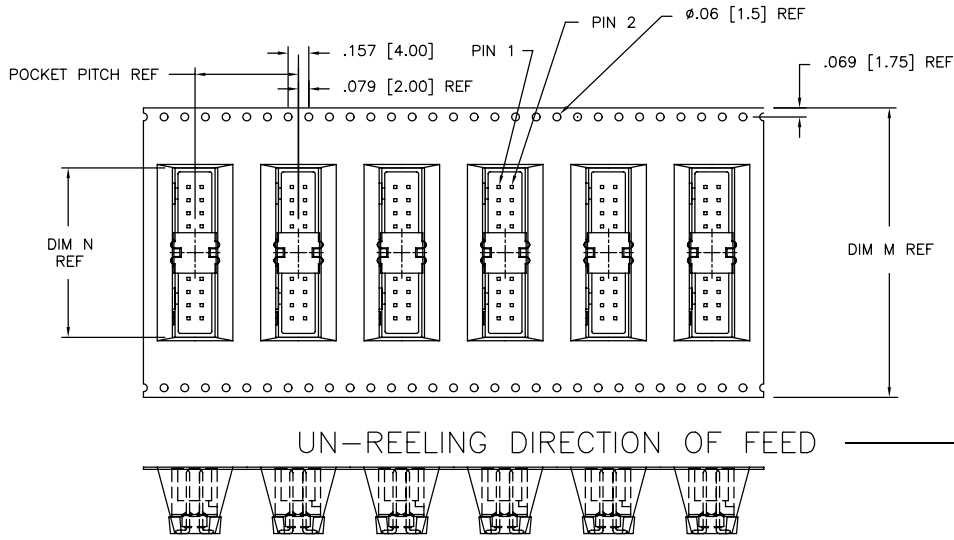


REV 1 - 2004-07

www.fciconnect.com		surface ISO 1302	tolerance ISO 406 ISO 1101	projection MM
		TOLERANCES UNLESS OTHERWISE SPECIFIED		
Dr	D.INGRAM	07/07/99	ANGULAR	LINEAR
Eng	L.GREEN	07/12/99	0° ±2.0°	0.XX ±0.30 0.XXX ±0.13 0.XXXX ±0.05
Chr	L.GREEN	07/12/99	Product family	QUICKIE
Appr	L.GREEN	07/21/99	Spec ref	ECN NID-0327
FCI title		0.100/2.54MM LOW PROFILE SHROUDED VERTICAL HEADER		Rev. X
catalog no		CUSTOMER		sheet 2 of 3

PRODUCT No. NOTE 10	NO. OF POSITIONS	HSG. STYLE	POLARIZED POSITION	PACKAGING	POCKET PITCH	DIM M	DIM N
52601-S10-801T	2 X 5	B	01	TAPE-ON-REEL	0.787/20.00	1.260/32.00	0.790/20.07
52601-S10-805T	2 X 5	B	05	TAPE-ON-REEL	0.787/20.00	1.260/32.00	0.790/20.07
52601-S10-807T	2 X 5	B	07	TAPE-ON-REEL	0.787/20.00	1.260/32.00	0.790/20.07
52601-S14-807T	2 X 7	C	07	TAPE-ON-REEL	0.787/20.00	1.732/44.00	1.090/27.69
52601-S14-80714T	2 X 7	C	07,14	TAPE-ON-REEL	0.787/20.00	1.732/44.00	1.090/27.69
52601-X16-8T	2 X 8	D	-	TAPE-ON-REEL	0.787/20.00	1.732/44.00	1.090/27.69
52601-X20-8T	2 X 10	D	-	TAPE-ON-REEL	0.787/20.00	2.204/56.00	1.290/32.77
52601-X30-8T	2 X 15	D	-	TAPE-ON-REEL	0.787/20.00	2.834/72.00	1.786/45.37
52601-X40-8T	2 X 20	D	-	TAPE-ON-REEL	0.787/20.00	3.465/88.00	2.293/58.25

* SPECIAL CUSTOMER



www.fcconnect.com		surface ISO 1302	tolerance ISO 406 ISO 1101	projection	MM
		TOLERANCES UNLESS OTHERWISE SPECIFIED			
Dr	D.INGRAM	07/07/99	ANGULAR	0.X	±0.30
Eng	L.GREEN	07/12/99	LINEAR	0.XX	±0.13
Chr	L.GREEN	07/12/99	0° ±2.0°	0.XXX	±0.05
Appr	L.GREEN	07/21/99	Product family	QUICKIE	Spec ref
	0.100/2.54MM LOW PROFILE SHROUDED VERTICAL HEADER			2	52601
catalog no				CUSTOMER	sheet 3 of 3

REV 1 - 2004-07

3 PDM: Rev:X

STATUS Released

4 Printed: Apr 12, 2011

Copyright FCJ