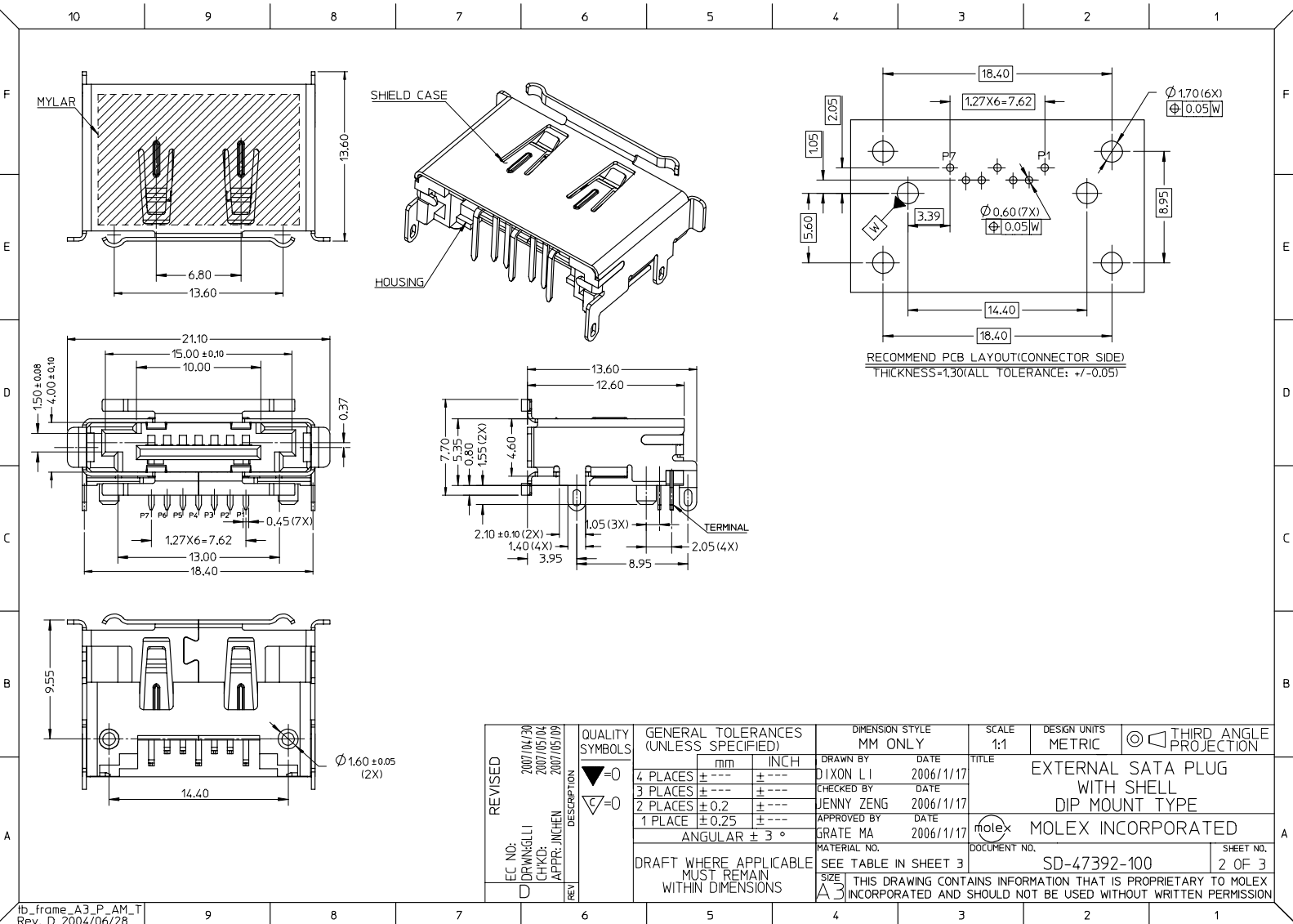


- NOTES:
- MATERIAL:
HOUSING: THERMAL PLASTIC, COLOR: BLACK, UL94V-0.
SHIELD CASE: COPPER ALLOY.
TERMIANL: COPPER ALLOY.
 - PLATING:
SHIELD CASE: 100-200µ SOLDERABLE NICKEL OVER ALL.
TERMINAL: CONTACT AREA GOLD PLATING(SEE CHART) AND SOLDER TAIL 50-100µ TIN ALLOY PLATING OVER 50µ MIN. NICKEL.
 - PRODUCT SPEC REFER TO PS-47082-001.
 - PACKAGE SPEC REFER TO PK-47379-001.
 - PRODUCT MEET STANDARD 1.0 REVISION OF THE SERIAL ATA II CABLE AND CONNECTOR VOL 2 SPECIFICATION.
 - PRODUCT COMPLIANT TO RoHS DIRECTIVE 2002/95/EC AND ELV 2000/53/EC.

REVISED	2007/04/30	QUALITY SYMBOLS	GENERAL TOLERANCES (UNLESS SPECIFIED)		DIMENSION STYLE		SCALE	DESIGN UNITS	THIRD ANGLE PROJECTION	
	2007/05/04		mm	INCH	MM ONLY		1:1	METRIC	EXTERNAL SATA PLUG WITH SHELL DIP MOUNT TYPE MOLEX INCORPORATED	
EC NO:	2007/05/04	DESCRIPTION	DRAFT WHERE APPLICABLE MUST REMAIN WITHIN DIMENSIONS		MATERIAL NO.		DOCUMENT NO.		SHEET NO.	
DRWING LI	2007/05/04		SEE TABLE IN SHEET 3	SD-47392-100		1 OF 3				
CHKD: CHIKO	2007/05/04	REV			SIZE		THIS DRAWING CONTAINS INFORMATION THAT IS PROPRIETARY TO MOLEX INCORPORATED AND SHOULD NOT BE USED WITHOUT WRITTEN PERMISSION			
APPR: JINCHEN	2007/05/04				A3					



REVISED	EC NO:	2007/04/30	QUALITY SYMBOLS	GENERAL TOLERANCES (UNLESS SPECIFIED)	DIMENSION STYLE		SCALE	DESIGN UNITS	THIRD ANGLE PROJECTION
	DRWING LI	2007/05/04			MM ONLY	1:1			
D	CHKD:	2007/05/04	▽=0	4 PLACES ± --- ± ---	DRAWN BY	DATE	TITLE	MOLEX INCORPORATED	SHEET NO.
	APPR: JINCHEN	2007/05/09	▽=0	3 PLACES ± --- ± ---	DIXON LI	2006/11/17			
				2 PLACES ± 0.2 ± ---	CHECKED BY	DATE			
				1 PLACE ± 0.25 ± ---	JENNY ZENG	2006/11/17			
				ANGULAR ± 3 °	APPROVED BY	DATE			
					GRATE MA	2006/11/17			
					MATERIAL NO.				
					SEE TABLE IN SHEET 3				
					SIZE				
					A3				
					THIS DRAWING CONTAINS INFORMATION THAT IS PROPRIETARY TO MOLEX INCORPORATED AND SHOULD NOT BE USED WITHOUT WRITTEN PERMISSION				

tb_frame_A3_P_AM.T
Rev. D 2004/06/28

	10	9	8	7	6	5	4	3	2	1						
F	473920205	ORANGE	0.76 MICRONS MIN	PA46(ONLY USE FOR WAVE SOLDER)	TWO POSTS ARE STAGGER AND DIAMETERS ARE DIFERRENT (DETAILS REFER TO SHEET 1)		473921205	ORANGE	0.76 MICRONS MIN	PA46(ONLY USE FOR WAVE SOLDER)	TWO POSTS ARE IN LINE AND DIAMETERS ARE SAME (DETAILS REFER TO SHEET 2)					
	473920204	RED					473921204	RED								
	473920203	BLUE					473921203	BLUE								
	473920202	NATURE					473921202	NATURE								
	473920201	BLACK					473921201	BLACK								
E	473920105	ORANGE	0.38 MICRONS MIN				PA6T(USE FOR IR AND WAVE SOLDER)					473921105	ORANGE	0.38 MICRONS MIN	PA6T(USE FOR IR AND WAVE SOLDER)	
	473920104	RED										473921104	RED			
	473920103	BLUE										473921103	BLUE			
	473920102	NATURE										473921102	NATURE			
	473920101	BLACK										473921101	BLACK			
D	473920005	ORANGE	GOLD FLASH	PA6T(USE FOR IR AND WAVE SOLDER)			473921005	ORANGE	GOLD FLASH	PA6T(USE FOR IR AND WAVE SOLDER)						
	473920004	RED					473921004	RED								
	473920003	BLUE					473921003	BLUE								
	473920002	NATURE					473921002	NATURE								
	473920001	BLACK					473921001	BLACK								
C	473920305	ORANGE	0.76 MICRONS MIN	PA6T(USE FOR IR AND WAVE SOLDER)			473921305	ORANGE	0.76 MICRONS MIN	PA6T(USE FOR IR AND WAVE SOLDER)						
	473920304	RED					473921304	RED								
	473920303	BLUE					473921303	BLUE								
	473920302	NATURE					473921302	NATURE								
	473920301	BLACK					473921301	BLACK								
B	473920405	ORANGE	0.38 MICRONS MIN	PA6T(USE FOR IR AND WAVE SOLDER)			473921405	ORANGE	0.38 MICRONS MIN	PA6T(USE FOR IR AND WAVE SOLDER)						
	473920404	RED					473921404	RED								
	473920403	BLUE					473921403	BLUE								
	473920402	NATURE					473921402	NATURE								
	473920401	BLACK					473921401	BLACK								
A	473920505	ORANGE	GOLD FLASH	PA6T(USE FOR IR AND WAVE SOLDER)			473921505	ORANGE	GOLD FLASH	PA6T(USE FOR IR AND WAVE SOLDER)						
	473920504	RED					473921504	RED								
	473920503	BLUE					473921503	BLUE								
	473920502	NATURE					473921502	NATURE								
	473920501	BLACK					473921501	BLACK								
MATERIAL MUBER	HOUSING COLOR	TERMINAL CONTACT PLATING	HOUSING MATERIAL	REMARK			MATERIAL NUMBER	HOUSING COLOR	TERMINAL CONTACT PLATING	HOUSING MATERIAL	REMARK					

REVISED EC NO: SH2007-0788 2007/04/30 DRAWING LI 2007/05/04 CHIKO-JITIAN 2007/05/04 APPR: JINCHEN 2007/05/04	QUALITY SYMBOLS	GENERAL TOLERANCES (UNLESS SPECIFIED)	DIMENSION STYLE	SCALE	DESIGN UNITS	THIRD ANGLE PROJECTION																																							
	$\nabla=0$ $\nabla=0$	<table border="1"> <tr> <th></th> <th>mm</th> <th>INCH</th> </tr> <tr> <td>4 PLACES</td> <td>± ---</td> <td>± ---</td> </tr> <tr> <td>3 PLACES</td> <td>± ---</td> <td>± ---</td> </tr> <tr> <td>2 PLACES</td> <td>± 0.2</td> <td>± ---</td> </tr> <tr> <td>1 PLACE</td> <td>± 0.25</td> <td>± ---</td> </tr> <tr> <td colspan="3">ANGULAR ± 3 °</td> </tr> </table>		mm	INCH	4 PLACES	± ---	± ---	3 PLACES	± ---	± ---	2 PLACES	± 0.2	± ---	1 PLACE	± 0.25	± ---	ANGULAR ± 3 °			<table border="1"> <tr> <th>mm ONLY</th> <th>DATE</th> </tr> <tr> <td>DRAWN BY</td> <td>DIXON LI</td> </tr> <tr> <td>DATE</td> <td>2006/11/17</td> </tr> <tr> <td>CHECKED BY</td> <td>JENNY ZENG</td> </tr> <tr> <td>DATE</td> <td>2006/11/17</td> </tr> <tr> <td>APPROVED BY</td> <td>GRATE MA</td> </tr> <tr> <td>DATE</td> <td>2006/11/17</td> </tr> </table>	mm ONLY	DATE	DRAWN BY	DIXON LI	DATE	2006/11/17	CHECKED BY	JENNY ZENG	DATE	2006/11/17	APPROVED BY	GRATE MA	DATE	2006/11/17	<table border="1"> <tr> <th>TITLE</th> <th>DOCUMENT NO.</th> <th>SHEET NO.</th> </tr> <tr> <td>EXTERNAL SATA PLUG WITH SHELL DIP MOUNT TYPE</td> <td>SD-47392-100</td> <td>3 OF 3</td> </tr> </table>	TITLE	DOCUMENT NO.	SHEET NO.	EXTERNAL SATA PLUG WITH SHELL DIP MOUNT TYPE	SD-47392-100	3 OF 3			
		mm	INCH																																										
	4 PLACES	± ---	± ---																																										
3 PLACES	± ---	± ---																																											
2 PLACES	± 0.2	± ---																																											
1 PLACE	± 0.25	± ---																																											
ANGULAR ± 3 °																																													
mm ONLY	DATE																																												
DRAWN BY	DIXON LI																																												
DATE	2006/11/17																																												
CHECKED BY	JENNY ZENG																																												
DATE	2006/11/17																																												
APPROVED BY	GRATE MA																																												
DATE	2006/11/17																																												
TITLE	DOCUMENT NO.	SHEET NO.																																											
EXTERNAL SATA PLUG WITH SHELL DIP MOUNT TYPE	SD-47392-100	3 OF 3																																											
	DRAFT WHERE APPLICABLE MUST REMAIN WITHIN DIMENSIONS	SEE TABLE																																											
		SIZE A3	THIS DRAWING CONTAINS INFORMATION THAT IS PROPRIETARY TO MOLEX INCORPORATED AND SHOULD NOT BE USED WITHOUT WRITTEN PERMISSION																																										