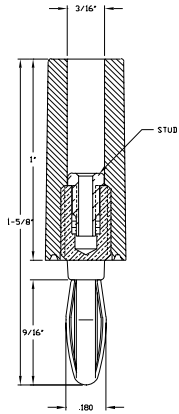
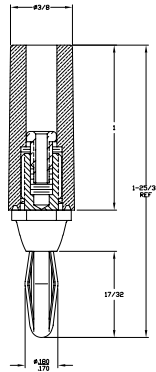


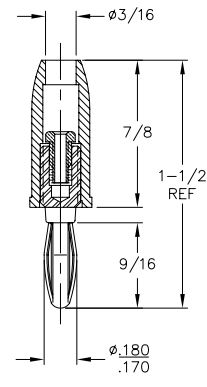
Standard Insulated Banana Plugs



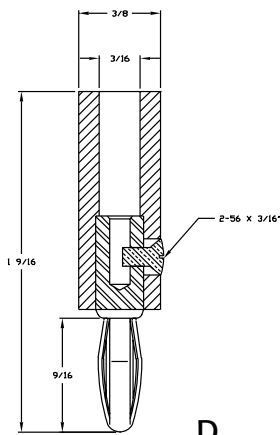
A



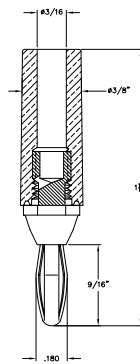
B



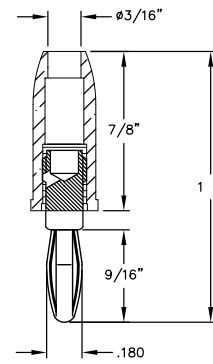
C



D



E



F

Banana Plugs

- Banana plug bodies are nickel plated brass with beryllium copper springs.
- Available in red (-102) and black (-103) as standard colors. Other colors are available upon request.
- Handles are molded plastic as indicated in table.

PART NO.	ILLUS.	TYPE	HANDLE	WIRING	RATING
211	A	Standard	Nylon	Stud or Well	15 Amps - 1KV
212	B				
476	C		Polycarbonate		
204	D		Nylon	Side Screw	
295	E		Polycarbonate	Solderless	
455	F				