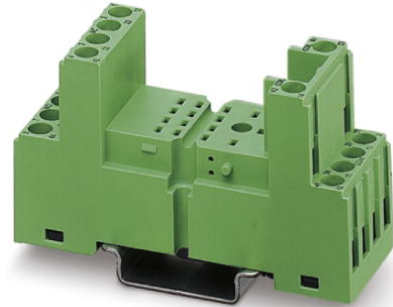


PR2-BSC2/4X21


Order No.: 2833563



<http://eshop.phoenixcontact.de/phoenix/treeViewClick.do?UID=2833563>


Relay socket PR2-B, for industrial relay REL-IR with 2 or 4 PDT, 2/2-level version, screw connections, connection facility for input/interference suppression modules, for mounting on NS 35/7.5



Commercial data	
GTIN (EAN)	
sales group	G301
Pack	10 pcs.
Customs tariff	85366990
Catalog page information	Page 64 (IF-2011)

Product notes

WEEE/RoHS-compliant since: 01/01/2005



<http://www.download.phoenixcontact.com>
 Please note that the data given here has been taken from the online catalog. For comprehensive information and data, please refer to the user documentation. The General Terms and Conditions of Use apply to Internet downloads.

Technical data	
Connection data	
Conductor cross section solid min.	0.2 mm ²
Conductor cross section solid max.	1.5 mm ²
Conductor cross section stranded min.	0.2 mm ²

Conductor cross section stranded max.	1.5 mm ²
Conductor cross section AWG/kcmil min.	26
Conductor cross section AWG/kcmil max	16
2 conductors with same cross section, solid max.	1.50 mm ²
2 conductors with same cross section, stranded max.	1.50 mm ²
2 conductors with same cross section, AWG max.	14
Connection method	Screw connection
Stripping length	7 mm
Screw thread	M3

General data

Width	27 mm
Height	75 mm
Color	green
Ambient temperature (operation)	-25 °C ... 85 °C
Ambient temperature (storage/transport)	-25 °C ... 85 °C

Certificates / Approvals



Certification UL

Accessories

Item	Designation	Description
General		
2833592	EL2-P35	Relay retaining bracket, with eject function and integrated equipment marking area (8 x 25 mm), to suit relay socket PR2, for 35 mm high industrial relay
2833644	MP 2	Equipment marker, labeling surface 9 x 25 mm

Address

PHOENIX CONTACT Inc., USA
586 Fulling Mill Road
Middletown, PA 17057, USA
Phone (800) 888-7388
Fax (717) 944-1625
<http://www.phoenixcon.com>



© 2011 Phoenix Contact
Technical modifications reserved;