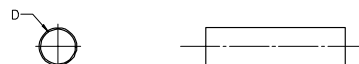


	12	11	10	9	8	7	6	5	4	3	2	19267					
J	BLACK		WHITE		RED		BLUE		CLEAR		YELLOW		MIN EXPANDED ID 'D'	MAX RECOVERED ID	RECOVERED WALL THK REF	LENGTH FEET/METERS	J
	MATERIAL NUMBER	ENGINEERING NUMBER	MATERIAL NUMBER	ENGINEERING NUMBER	MATERIAL NUMBER	ENGINEERING NUMBER	MATERIAL NUMBER	ENGINEERING NUMBER	MATERIAL NUMBER	ENGINEERING NUMBER	MATERIAL NUMBER	ENGINEERING NUMBER					
	192670015	PF-3/16-1BK	192670135	PF-3/16-1WT	192670137	PF-3/16-1RD	192670138	PF-3/16-1BL	192670139	PF-3/16-1CL	192670140	PF-3/16-1YL	.187/4.75	.093/2.36	.020/0.51		
I	192670165	PF-1/4-1BK	192670166	PF-1/4-1WT	192670167	PF-1/4-1RD	192670168	PF-1/4-1BL	192670169	PF-1/4-1CL	192670170	PF-1/4-1YL	.250/6.35	.125/3.18	.025/0.64	4.0/1.2	I
H	192670285	PF-1-1BK	192670286	PF-1-1WT	192670287	PF-1-1RD	192670288	PF-1-1BL	192670289	PF-1-1CL	192670290	PF-1-1YL	1.000/25.40	5.000/127.00	.035/0.89		H
G	192670123	PF-1/8-4BK	192670124	PF-1/8-4WT	192670125	PF-1/8-4RD	192670126	PF-1/8-4BL	192670127	PF-1/8-4CL	192670128	PF-1/8-4YL	.125/3.18	.062/1.57	.020/0.51	1000/304.8 SPOOL	G
F	192670303	PF-1-4BK	192670304	PF-1-4WT	192670305	PF-1-4RD	192670306	PF-1-4BL	192670307	PF-1-4CL	192670308	PF-1-4YL	1.000/25.40	5.000/127.00	.035/0.89		F
E	192670099	PF-3/32-4BK	192670099	PF-3/32-4WT	192670099	PF-3/32-4RD	192670099	PF-3/32-4BL	192670097	PF-3/32-4CL	192670098	PF-3/32-4YL	.093/2.36	.046/1.17	.020/0.51		E
D	192670219	PF-3/16-5BK	192670130	PF-1/8-5WT	192670131	PF-1/8-5RD	192670132	PF-1/8-5BL	192670133	PF-1/8-5CL	192670134	PF-1/8-5YL	.125/3.18	.062/1.57	.020/0.51	100/30.4 SPOOL	D
C	192670339	PF-3-5BK	192670400	PF-3-5WT	192670401	PF-3-5RD	192670402	PF-3-5BL	192670403	PF-3-5CL	192670404	PF-3-5YL	3.000/76.20	1.500/38.10	.050/1.27		C



SALES DRAWING

- NOTES:  
 1. MATERIAL: POLYOLEFIN  
 2. OTHER CUT LENGTHS ARE AVAILABLE.

NEW RELEASE EC NO: E12005-0024 DRAWN BY: BENDERLE 2004/08/04 CHK'D BY: DEROSS 2004/08/04 APPR: DEROSS 2004/08/04	QUALITY SYMBOLS	GENERAL TOLERANCES (UNLESS SPECIFIED)	SCALE 1:1	DESIGN UNITS INCH	THIRD ANGLE PROJECTION	REVISE ON CAD ONLY
	0 0	4 PLACES ± --- ± ---	mm	DIMENSION STYLE IN/MM	TITLE PERMA-FIT POLYOLEFIN HEAT SHRINK TUBING 19267 SERIES	DRAWN BY BENDERLE 2004/08/04 DATE 2004/08/04 CHECKED BY R DEROSS 2004/08/04 DATE 2004/08/04
		3 PLACES ± --- ± ---	INCH	MATERIAL NO. SEE CHART		
	2 PLACES ± --- ± ---	ANGULAR ± --- °	DRAFT WHERE APPLICABLE	APPROVED BY R DEROSS 2004/08/04	DATE 2004/08/04	DOCUMENT NO. SD-19267-001
1 PLACE ± --- ± ---	MUST REMAIN WITHIN DIMENSIONS	INCORPORATED AND SHOULD NOT BE USED WITHOUT WRITTEN PERMISSION	MOLEX INCORPORATED			