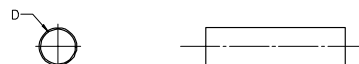


	12	11	10	9	8	7	6	5	4	3	2	19267					
J	BLACK		WHITE		RED		BLUE		CLEAR		YELLOW		MIN EXPANDED ID 'D'	MAX RECOVERED ID	RECOVERED WALL THK REF	LENGTH FEET/METERS	J
	MATERIAL NUMBER	ENGINEERING NUMBER	MATERIAL NUMBER	ENGINEERING NUMBER	MATERIAL NUMBER	ENGINEERING NUMBER	MATERIAL NUMBER	ENGINEERING NUMBER	MATERIAL NUMBER	ENGINEERING NUMBER	MATERIAL NUMBER	ENGINEERING NUMBER					
	192670015	PF-3/16-1BK	192670136	PF-3/16-1WT	192670137	PF-3/16-1RD	192670138	PF-3/16-1BL	192670139	PF-3/16-1CL	192670140	PF-3/16-1YL	.187/4.75	.093/2.36	.020/0.51		
	192670165	PF-1/4-1BK	192670166	PF-1/4-1WT	192670167	PF-1/4-1RD	192670168	PF-1/4-1BL	192670169	PF-1/4-1CL	192670170	PF-1/4-1YL	.250/6.35	.125/3.18	.025/0.64	4.0/1.2	
	192670225	PF-1/2-1BK	192670226	PF-1/2-1WT	192670227	PF-1/2-1RD	192670228	PF-1/2-1BL	192670229	PF-1/2-1CL	192670230	PF-1/2-1YL	.500/12.70	.250/6.35	.025/0.64		
	192670285	PF-1-1BK	192670286	PF-1-1WT	192670287	PF-1-1RD	192670288	PF-1-1BL	192670289	PF-1-1CL	192670290	PF-1-1YL	1.000/25.40	.500/12.70	.035/0.89		
	192670315	PF-1/2-1BK	192670316	PF-1/2-1WT	192670317	PF-1/2-1RD	192670318	PF-1/2-1BL	192670319	PF-1/2-1CL	192670320	PF-1/2-1YL	1.500/38.10	.750/19.05	.040/1.02		
	192670345	PF-2-1BK	192670346	PF-2-1WT	192670347	PF-2-1RD	192670348	PF-2-1BL	192670349	PF-2-1CL	192670350	PF-2-1YL	2.000/50.80	1.000/25.40	.045/1.14		
	192670375	PF-3-1BK	192670376	PF-3-1WT	192670377	PF-3-1RD	192670378	PF-3-1BL	192670379	PF-3-1CL	192670380	PF-3-1YL	3.000/76.20	1.500/38.10	.050/1.27		
	192670405	PF-4-1BK	192670406	PF-4-1WT	192670407	PF-4-1RD	192670408	PF-4-1BL	192670409	PF-4-1CL	192670410	PF-4-1YL	4.000/101.60	2.000/50.80	.055/1.40		
	192670033	PF-3/64-4BK	192670034	PF-3/64-4WT	192670035	PF-3/64-4RD	192670036	PF-3/64-4BL	192670037	PF-3/64-4CL	192670038	PF-3/64-4YL	.046/1.17	.023/0.58	.018/0.46		
	192670063	PF-1/16-4BK	192670064	PF-1/16-4WT	192670065	PF-1/16-4RD	192670066	PF-1/16-4BL	192670067	PF-1/16-4CL	192670068	PF-1/16-4YL	.063/1.60	.031/0.79	.018/0.46		
	192670093	PF-3/32-4BK	192670094	PF-3/32-4WT	192670095	PF-3/32-4RD	192670096	PF-3/32-4BL	192670097	PF-3/32-4CL	192670098	PF-3/32-4YL	.093/2.36	.046/1.17	.020/0.51		
	192670123	PF-1/8-4BK	192670124	PF-1/8-4WT	192670125	PF-1/8-4RD	192670126	PF-1/8-4BL	192670127	PF-1/8-4CL	192670128	PF-1/8-4YL	.125/3.18	.062/1.57	.020/0.51		
	192670153	PF-3/16-4BK	192670154	PF-3/16-4WT	192670155	PF-3/16-4RD	192670156	PF-3/16-4BL	192670157	PF-3/16-4CL	192670158	PF-3/16-4YL	.187/4.75	.093/2.36	.020/0.51		
	192670183	PF-1/4-4BK	192670184	PF-1/4-4WT	192670185	PF-1/4-4RD	192670186	PF-1/4-4BL	192670187	PF-1/4-4CL	192670188	PF-1/4-4YL	.250/6.35	.125/3.18	.025/0.64		
	192670213	PF-3/8-4BK	192670214	PF-3/8-4WT	192670215	PF-3/8-4RD	192670216	PF-3/8-4BL	192670217	PF-3/8-4CL	192670218	PF-3/8-4YL	.375/9.53	.187/4.75	.025/0.64	1000/304.8 SPOOL	
	192670243	PF-1/2-4BK	192670244	PF-1/2-4WT	192670245	PF-1/2-4RD	192670246	PF-1/2-4BL	192670247	PF-1/2-4CL	192670248	PF-1/2-4YL	5.000/12.70	2.500/6.35	.025/0.64		
	192670273	PF-3/4-4BK	192670274	PF-3/4-4WT	192670275	PF-3/4-4RD	192670276	PF-3/4-4BL	192670277	PF-3/4-4CL	192670278	PF-3/4-4YL	.750/19.05	.375/9.53	.030/0.76		
	192670303	PF-1-4BK	192670304	PF-1-4WT	192670305	PF-1-4RD	192670306	PF-1-4BL	192670307	PF-1-4CL	192670308	PF-1-4YL	1.000/25.40	.500/12.70	.035/0.89		
	192670333	PF-1/2-4BK	192670334	PF-1/2-4WT	192670335	PF-1/2-4RD	192670336	PF-1/2-4BL	192670337	PF-1/2-4CL	192670338	PF-1/2-4YL	1.500/38.10	.750/19.05	.040/1.02		
	192670363	PF-2-4BK	192670364	PF-2-4WT	192670365	PF-2-4RD	192670366	PF-2-4BL	192670367	PF-2-4CL	192670368	PF-2-4YL	2.000/50.80	1.000/25.40	.045/1.14		
	192670393	PF-3-4BK	192670394	PF-3-4WT	192670395	PF-3-4RD	192670396	PF-3-4BL	192670397	PF-3-4CL	192670398	PF-3-4YL	3.000/76.20	1.500/38.10	.050/1.27		
	192670423	PF-4-4BK	192670424	PF-4-4WT	192670425	PF-4-4RD	192670426	PF-4-4BL	192670427	PF-4-4CL	192670428	PF-4-4YL	4.000/101.60	2.000/50.80	.055/1.40		
	192670039	PF-3/64-5BK	192670040	PF-3/64-5WT	192670041	PF-3/64-5RD	192670042	PF-3/64-5BL	192670043	PF-3/64-5CL	192670044	PF-3/64-5YL	.046/1.17	.023/0.58	.018/0.46		
	192670069	PF-1/16-5BK	192670070	PF-1/16-5WT	192670071	PF-1/16-5RD	192670072	PF-1/16-5BL	192670073	PF-1/16-5CL	192670074	PF-1/16-5YL	.063/1.60	.031/0.79	.018/0.46		
	192670099	PF-3/32-5BK	192670100	PF-3/32-5WT	192670101	PF-3/32-5RD	192670102	PF-3/32-5BL	192670103	PF-3/32-5CL	192670104	PF-3/32-5YL	.093/2.36	.046/1.17	.020/0.51		
	192670129	PF-1/8-5BK	192670130	PF-1/8-5WT	192670131	PF-1/8-5RD	192670132	PF-1/8-5BL	192670133	PF-1/8-5CL	192670134	PF-1/8-5YL	.125/3.18	.062/1.57	.020/0.51		
	192670159	PF-3/16-5BK	192670160	PF-3/16-5WT	192670161	PF-3/16-5RD	192670162	PF-3/16-5BL	192670163	PF-3/16-5CL	192670164	PF-3/16-5YL	.187/4.75	.093/2.36	.020/0.51		
	192670189	PF-1/4-5BK	192670190	PF-1/4-5WT	192670191	PF-1/4-5RD	192670192	PF-1/4-5BL	192670193	PF-1/4-5CL	192670194	PF-1/4-5YL	.250/6.35	.125/3.18	.025/0.64		
	192670219	PF-3/8-5BK	192670220	PF-3/8-5WT	192670221	PF-3/8-5RD	192670222	PF-3/8-5BL	192670223	PF-3/8-5CL	192670224	PF-3/8-5YL	.375/9.53	.187/4.75	.025/0.64	100/30.4 SPOOL	
	192670249	PF-1/2-5BK	192670250	PF-1/2-5WT	192670251	PF-1/2-5RD	192670252	PF-1/2-5BL	192670253	PF-1/2-5CL	192670254	PF-1/2-5YL	.500/12.70	.250/6.35	.025/0.64		
	192670279	PF-3/4-5BK	192670280	PF-3/4-5WT	192670281	PF-3/4-5RD	192670282	PF-3/4-5BL	192670283	PF-3/4-5CL	192670284	PF-3/4-5YL	.750/19.05	.375/9.53	.030/0.76		
	192670309	PF-1-5BK	192670310	PF-1-5WT	192670311	PF-1-5RD	192670312	PF-1-5BL	192670313	PF-1-5CL	192670314	PF-1-5YL	1.000/25.40	.500/12.70	.035/0.89		
	192670339	PF-1/2-5BK	192670340	PF-1/2-5WT	192670341	PF-1/2-5RD	192670342	PF-1/2-5BL	192670343	PF-1/2-5CL	192670344	PF-1/2-5YL	1.500/38.10	.750/19.05	.040/1.02		
	192670369	PF-2-5BK	192670370	PF-2-5WT	192670371	PF-2-5RD	192670372	PF-2-5BL	192670373	PF-2-5CL	192670374	PF-2-5YL	2.000/50.80	1.000/25.40	.045/1.14		
	192670399	PF-3-5BK	192670400	PF-3-5WT	192670401	PF-3-5RD	192670402	PF-3-5BL	192670403	PF-3-5CL	192670404	PF-3-5YL	3.000/76.20	1.500/38.10	.050/1.27		
	192670429	PF-4-5BK	192670430	PF-4-5WT	192670431	PF-4-5RD	192670432	PF-4-5BL	192670433	PF-4-5CL	192670434	PF-4-5YL	4.000/101.60	2.000/50.80	.055/1.40		



SALES DRAWING

- NOTES:
 1. MATERIAL: POLYOLEFIN
 2. OTHER CUT LENGTHS ARE AVAILABLE.

NEW RELEASE EC NO: EIT2005-0024 DRAWN BY: BENDERLE 2004/08/10 CHK'D BY: DEROSS 2004/08/10 APPR: DEROSS 2004/08/10	QUALITY SYMBOLS 0 0	GENERAL TOLERANCES (UNLESS SPECIFIED)		SCALE 1:1	DESIGN UNITS INCH	THIRD ANGLE PROJECTION	REVISE ON CAD ONLY	
		4 PLACES ±	±	DIMENSION STYLE IN/MM		TITLE PERMA-FIT POLYOLEFIN HEAT SHRINK TUBING 19267 SERIES		
		3 PLACES ±	±	DRAWN BY BENDERLE	DATE 2004/08/04			
		2 PLACES ±	±	CHECKED BY R DEROSS	DATE 2004/08/04			
		ANGULAR ±		APPROVED BY R DEROSS		DATE 2004/08/04	MATERIAL NO. SEE CHART	
		DRAFT WHERE APPLICABLE		DOCUMENT NO. SD-19267-001		SHEET NO. 1 OF 1		
		MUST REMAIN WITHIN DIMENSIONS		THIS DRAWING CONTAINS INFORMATION THAT IS PROPRIETARY TO MOLEX INCORPORATED AND SHOULD NOT BE USED WITHOUT WRITTEN PERMISSION				