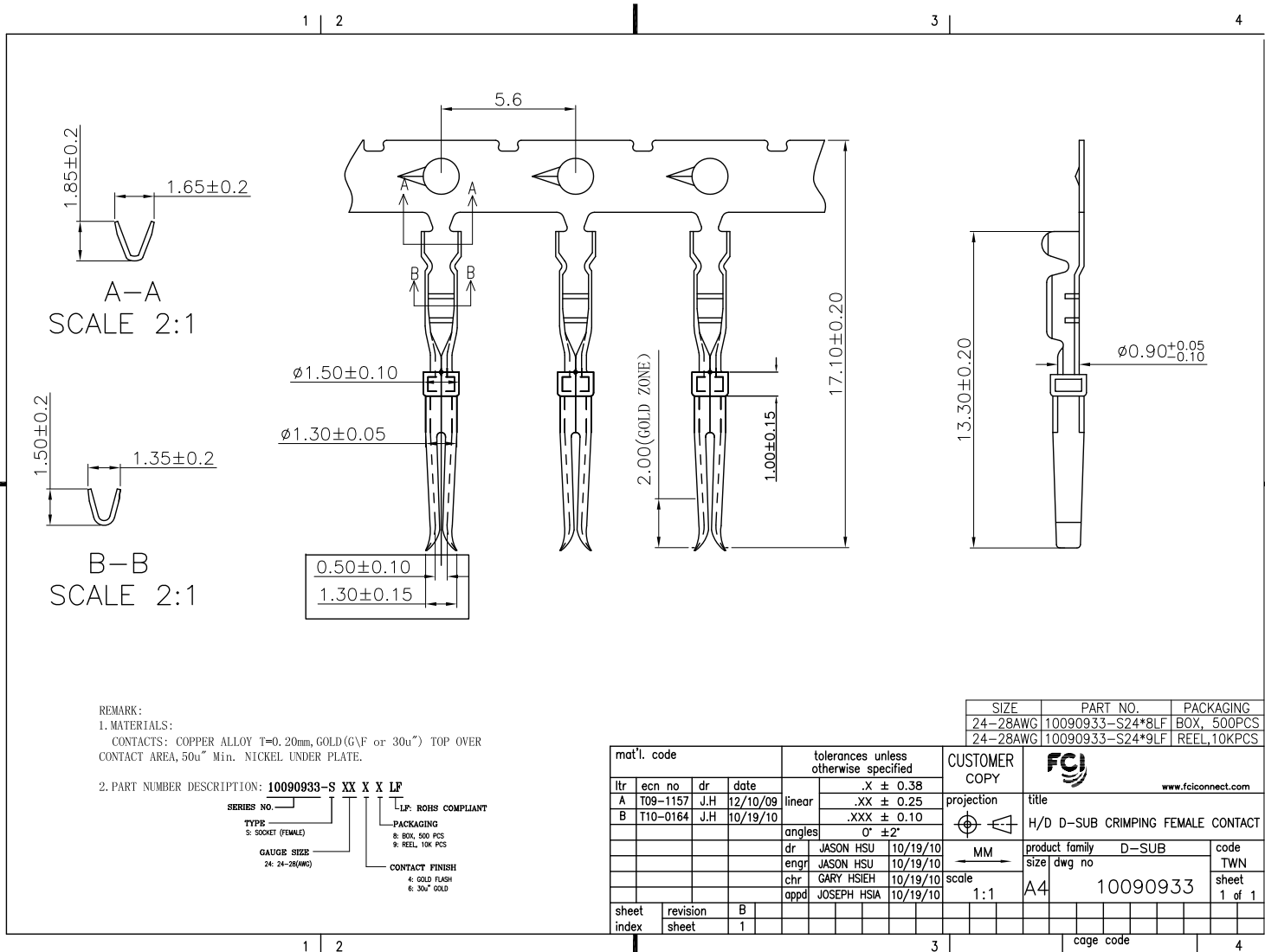


All rights strictly reserved. Reproduction or issue to third parties in any form whatever is not permitted without written authority from the proprietor. Property of FCI. Copyright FCI.



Tous droits strictement reserves. Reproduction ou communication a des tiers interdite sous quelque forme que ce soit sans autorisation écrite du propriétaire. Propriete de c FCI. Droits de reproduction FCI.



REMARK:
 1. MATERIALS:
 CONTACTS: COPPER ALLOY T=0.20mm, GOLD(GVF or 30u") TOP OVER CONTACT AREA, 50u" Min. NICKEL UNDER PLATE.

2. PART NUMBER DESCRIPTION: **10090933-S XX X X LF**
 SERIES NO. _____
 TYPE: _____
 S: SOCKET (FEMALE)
 GAUGE SIZE: 24-28(AWG)
 LF: ROHS COMPLIANT
 PACKAGING:
 8: BOX, 500 PCS
 9: REEL, 10K PCS
 CONTACT FINISH:
 4: GOLD FLASH
 6: 30u" GOLD

SIZE	PART NO.	PACKAGING
24-28AWG	10090933-S24*8LF	BOX, 500PCS
24-28AWG	10090933-S24*9LF	REEL, 10KPCS

mat'l. code				tolerances unless otherwise specified		CUSTOMER COPY		FCI		
ltr	ecn no	dr	date	linear	.X ± 0.38	projection	title	www.fciconnect.com		
A	T09-1157	J.H	12/10/09		.XX ± 0.25			H/D D-SUB CRIMPING FEMALE CONTACT		
B	T10-0164	J.H	10/19/10	angles	.XXX ± 0.10	MM	product family	D-SUB	code	
					0° ±2°					scale
				dr	JASON HSU 10/19/10	1:1	A4	10090933	sheet	
				enr	JASON HSU 10/19/10					1 of 1
				chr	GARY HSIEH 10/19/10					
				appd	JOSEPH HSIA 10/19/10					
sheet index	revision sheet	B	1							