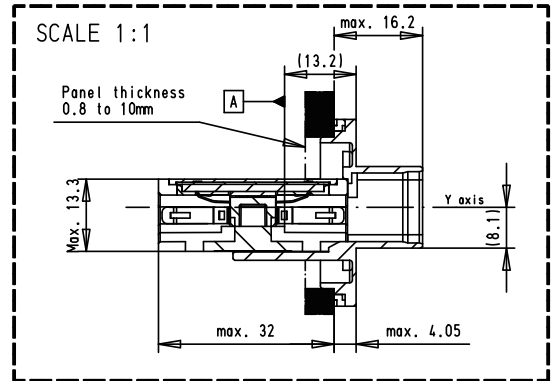
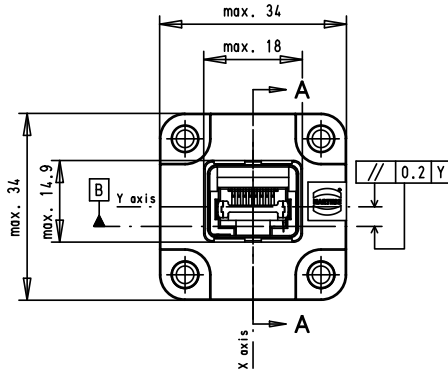
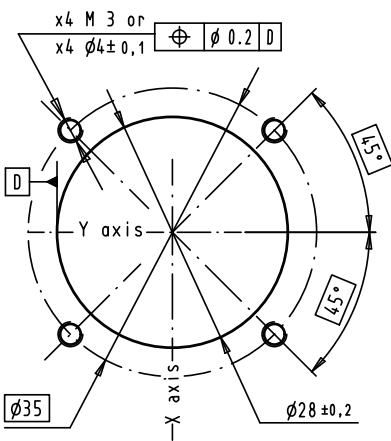


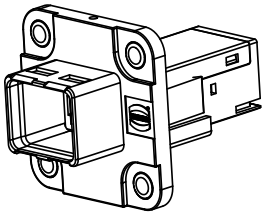
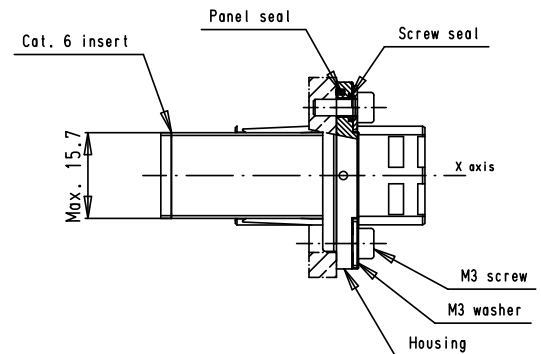
Panel cutting





Connector pitches on panel = 35 mm
 Receptacle mating face acc. to IEC 61076-3-106 - variant 04

jack references A and B according to IEC 60603-7 the jack is located in the housing in the X,Y,Z axis after locking clips.

Screwing by x4 M3 screws with torque 0.5 N.m with flat washer under the screw .



			Det.	Name	 All Dim. in mm Orig. Size DIN A 4	HARTING PUSH/PULL PLASTIC EASYINSTALL PANEL FEED THROUGH Cat.6	Maßstab/ Scale 1:1
			Detail.	AB			
			Insp.				
			Stand.				
36075	25/05/10	AB	HARTING EURL F-95972 Paris			TB 09 45 245 1590	Blatt/ Page 1 / 1
Mod.	Det.	Name				Sub.	