

# EM-DUO 120/15/SPD/AUX


Order No.: 5604063

<http://eshop.phoenixcontact.de/phoenix/treeViewClick.do?UID=5604063>

Rail-mountable double socket with integrated fault current circuit breaker, for mounting on 35 mm DIN rails in acc. with EN 60715, housing color: White, with screw connection, national version: USA



## Commercial data

GTIN (EAN)	
Note	Made-to-order
sales group	H070
Pack	1 pcs.
Customs tariff	85363030

<http://www.download.phoenixcontact.com>  
Please note that the data given here has been taken from the online catalog. For comprehensive information and data, please refer to the user documentation. The General Terms and Conditions of Use apply to Internet downloads.

## Product description

Rail-mountable utility outlet with integrated surge protection for 120 V AC power.

## Certificates / Approvals



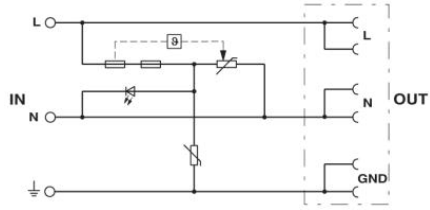
Certification

CUL Listed, UL Listed

## Diagrams/Drawings

### Circuit diagram

---



**Address**

PHOENIX CONTACT Inc., USA  
586 Fulling Mill Road  
Middletown, PA 17057, USA  
Phone (800) 888-7388  
Fax (717) 944-1625  
<http://www.phoenixcon.com>



© 2011 Phoenix Contact  
Technical modifications reserved;